



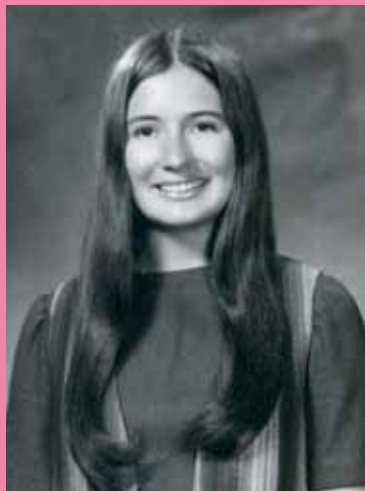
# CROSSROADS

FOR FRIENDS OF HOSPICE

SPRING 2013



*Celebrating Life*





# A NOTE FROM WITHIN

## A HELPING HAND

We live in a very generous community, one that gives unselfishly of its time, its treasure and its talents to improve the quality of living in Northern Indiana. To recognize that spirit of giving, Center for Hospice Care began the Helping Hands Award 29 years ago.

The list of honorees is as diverse as the community itself: business and religious leaders; founding families; and community volunteers. Each year the nominating committee is faced with the daunting task of choosing an honoree from a long list of distinguished and deserving nominees.

There are those people whose work shines outside the spotlight of public notice. They give selflessly and patiently of themselves, never seeking recognition for the time and talent they dedicate to their cause of choice.

One such person is Ann Manion. Since 1988 she has served as volunteer President of Women's Care Center, the nation's largest pregnancy resource center. The organization expects to serve 21,000 pregnant women in 2012. She was also a founding board member of Hannah's House, a maternity home for pregnant teenagers, which was jointly founded by St. Joseph Hospital of Mishawaka and Women's Care Center in 1993. Ann is this year's Helping Hands Award recipient and we are pleased to honor her many years of community service.

Our mission to improve the quality of living extends beyond the eight-county Northern Indiana region we serve. The world has become a highly networked, global village; our compassion, particularly for those facing end of life issues, should know no boundaries. In the course of our four-year partnership with the Palliative Care Association of Uganda (PCAU), we have provided financial and program resources to assist them in their mission to make palliative care accessible to all the country's 33 million people – even those in the most remote villages. The short documentary *Okuyamba* told the story of how Rose Kiwanuka, country director of PCAU, along with staff and volunteers make a difference in the lives of those dying in Uganda's rural areas. *Okuyamba* is the Lugandan word meaning "to help" – and those of us at the Hospice Foundation and Center for Hospice Care who have helped shepherd the partnership are humbled by the number of people who have stepped forward to do just that.

Through grants and our employee giving program, the Uganda Impact Fund, we have been able to provide scholarships for health care workers. Recipients complete a year long Clinical Palliative Care Course which educates them about all aspects of palliative care and allows them to prescribe morphine, the pain relief drug of choice. In the past three years, we have supported 11 students as they complete the program.

As you'll see in this issue, the Hospice Foundation has started a crowdfunding initiative in order to fund another scholarship and provide yet another set of helping hands for those in need of palliative care.

Please consider lending your support to our crowdfunding initiative and join us in recognizing Ann for her considerable accomplishments.



Michael J. Wargo  
Chief Operating Officer



# CONTENTS

## WINTER 2013

## p18-19 29th Annual Helping Hands Award Dinner Honoring Ann Manion

Celebrating Life

## p14-15 Intro to Hospice and Palliative Care Class

### Board of Directors

Terry Rodino, Chairman  
Corey Cressy  
Julie Englert  
Catherine Hiler  
Amy Kuhar Mauro  
Wendell Walsh

### Officers

Mark Murray, President/CEO  
Mike Wargo, COO  
Karl Holderman, CFO

### Contributors

Nora Crosen  
Caron Gleva  
Lisa Kelly  
Scott Leonard/Valentinos  
Cyndy Searfoss  
Mike Wargo  
Jim Wiskotoni



HOSPICE  
FOUNDATION

[www.FoundationForHospice.org](http://www.FoundationForHospice.org)

## A LOOK BACK

- p4-5 Mishawaka Campus Building Progress  
p6-7 The Art of Healing: "After Images" Bereavement Art Counseling

## ON THE HORIZON

- p8 20th Anniversary of Camp Evergreen  
p10 28th Annual Walk for Hospice  
p12 5th Annual Bike Michiana for Hospice  
p15 Calendar

## PARTNERSHIPS IN CARING

- p16-17 Crowdfunding for PCAU  
p17 PCAU 5th Biannual Conference

## HEART OF HOSPICE

- p20-21 Donor Profile  
Gates Automotive Group  
p22 Community Corner  
p23-25 Circle of Caring  
p26-39 In Memoriam  
p39 Honor Listing



# A LOOK BACK

STORIES AND ACTIVITIES FROM THE PAST QUARTER

## Mishawaka Campus Building Progress

The slanted roofs and green walls of the two new buildings of the Center for Hospice Care (CHC) Mishawaka Campus now rise above the northern banks of the St. Joseph River. The green walls are only temporary; they will



soon be covered in stone, metal and wood. Windows are in place throughout much of

the structure as workers begin to redirect construction activities to the interior of the buildings.

These structures are the first phase of a projected three-phase project. The first floor of the western building will house the Life Transition Center, the After Images art counseling program and bereavement counseling staff, as well as a large conference area. The Hospice Foundation will be located on the second floor.

CHC administrators, information technology, human resources, accounting, billing, and marketing/community relations departments will move to the eastern building once completed. A number of patios and outdoor

areas will allow staff and visitors to enjoy the scenic views of the river and surrounding scenery. These areas will allow CHC and the Hospice Foundation to hold events such as Walk for Hospice on campus. This year's walk, which will utilize Mishawaka's scenic Riverwalk, is scheduled for August 11th and will be the new campus' kick-off event.

In order to meet the increasing need for skilled, compassionate hospice and palliative care, the size of Center for Hospice Care's staff has doubled in the past 10 years. Additional office space was needed to keep up with the growth. Karl Holderman, chief financial officer recently commented that as a result, "We've been adding a few thousand additional square feet of office space every

few years to the point that we are leasing as much space in St. Joseph County as we own. If you do the math, it doesn't take one long to conclude that owning makes a lot more sense for us than continuing to add more leased facilities."



While building is underway on the five-acre campus, the City of Mishawaka is beginning the planning and design phases of its Central Park renovation. Central Park borders the CHC property to the north and west. Current plans call for new shelters, a walking oval, pavilion, new playground area, water element and other enhancements. CHC is working closely with officials at the City of Mishawaka to coordinate plans so the green spaces flow together for those using Central Park and the Riverwalk.

Phase II of the Mishawaka campus project will include buildings to house CHC's medical staff as well as a new Hospice House. Though preliminary planning for that phase is in process, actual construction will not take place until funding is secured.



Guest house remodel

Along with the new construction, remodeling work is also progressing on the campus' Guest House while the former Edgewater Florist building is being transformed into a new Palliative Care Center. Both facilities are expected to be completed this summer as well.

December 12, 2012



January 15, 2013



January 22, 2013



February 5, 2013



February 25, 2013



March 5, 2013





## The Art of Healing: “After Images” Bereavement Art Counseling

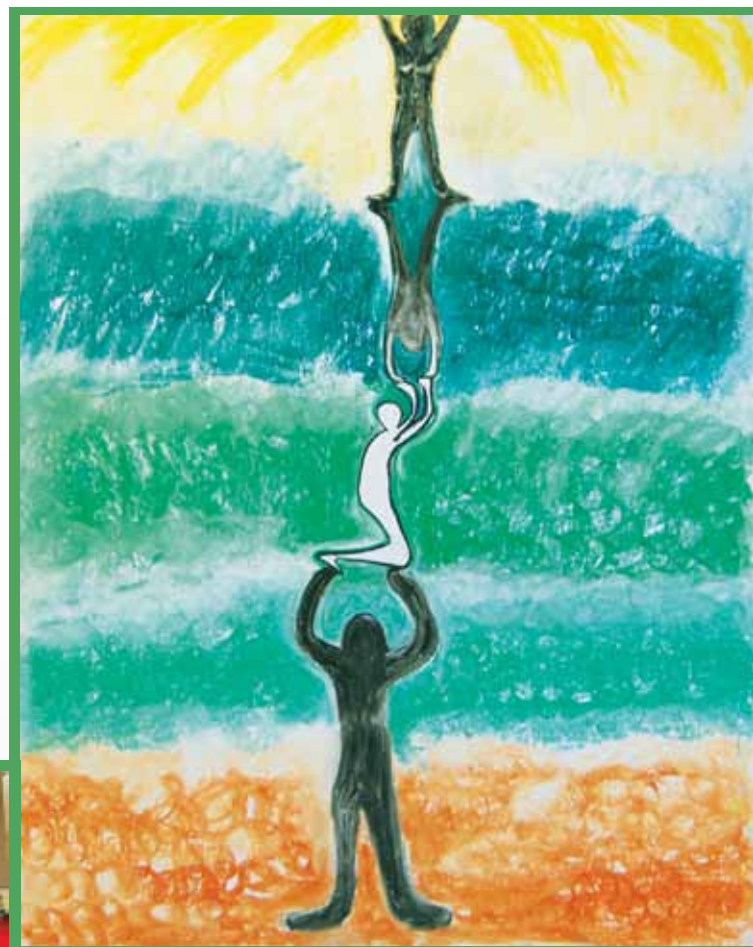
Providing education and support to those who are grieving due to the death of someone in their lives is the mission of Center for Hospice Care’s Life Transition Center. For some, expressing their grief through art provides a path to healing.

Dave Labrum, who has a Master of Fine Arts from the University of Michigan and a master’s in counseling from Indiana University, is uniquely qualified to lead “After Images” bereavement art counseling. He brought the program to CHC more than a decade ago. In 2006 he created a hardcover art book, “the hole in me since the day you died” along with Margaret Gloster, which was published by Center for Hospice Care. The book shares the artwork and stories of seven program

participants as they work through the process of grieving.

Those who take part in the program create their artwork alone in the program’s studio space with Labrum’s support and guidance. As he noted, the studio is a place where they come to feel safe and are able to express their grief openly and honestly.

Labrum states his participants often feel uncertain about their ability to create art. The majority have no art background or training, but quickly move beyond their concerns by immersing themselves in the art process, experimenting with materials such as oil paint sticks, pastels and acrylic paints to create pieces that enable them to experience their feelings – their anger, guilt, sadness and loneliness



*“When they create their artwork they are experiencing themselves and draw on their spontaneity and creativity and passion for living.”*

– in a new way. For several hours a week, it connects them to their grief in a manageable way and eventually helps them to transcend their experience of grief.

To help increase awareness of the program in CHC’s service area, the Hospice Foundation and Labrum have created a series of note cards that feature 11 pieces of art created by After Images participants, including the five pictured in this story. Sets of cards have been made available at Hospice Foundation events, though they are not for sale.

Labrum loves seeing the artwork created by his participants made available to the

general public in this way. “Beyond their therapeutic value, they are in their own right beautiful and compelling fine artwork, deserving of everyone’s attention.”

To learn more about the After Images program, contact CHC’s Life Transition Center at 574.255.1064 or 800.413.9083 or Dave Labrum at 574.243.2067. Individual copies of “the hole in me since the day you died” are available for purchase for \$30 at [www.centerforhospice.org/art-counseling-book](http://www.centerforhospice.org/art-counseling-book). Special discounted pricing for bulk purchases are also available when ordering online, or contact Cyndy Searfoss at [searfossc@centerforhospice.org](mailto:searfossc@centerforhospice.org) or 574.277.4203.

Far Left: Dave Labrum, the After Images art counselor, sits in his studio that displays many of the works of art program participants have created this year.

All other images on this spread are original pieces of art created by participants in the After Images program.





# ON THE HORIZON

FUTURE EVENTS AND HOSPICE HAPPENINGS

## 20th Anniversary of Camp Evergreen

### Celebrating 20 Years of Helping Grieving Children

This year marks the 20th anniversary of Camp Evergreen, which will be held June 7-9. A celebration for former campers, volunteers and buddies will be held later in the summer. Anyone who has been part of the camp can contact Lisa Kelly at [KellyL@centerforhospice.org](mailto:KellyL@centerforhospice.org) or 800.467.7423 to be a part of this event.

For 20 years now, Camp Evergreen has been a place where children and teens can work through their grief. Often times, they are the forgotten grievers, and are unaware that others their own age are experiencing the same issues.

Camp Evergreen is designed to provide a supportive, yet fun, environment for children and teens who have lost a loved one. Full of adventure and caring, it's a

weekend that helps campers with their grief. "It's a powerful weekend for the children and volunteers. Along with opportunities for healing and sharing, everyone gets to participate in fun-filled activities including swimming, canoeing, horseback riding, and camp fires," according to Holly Farmer, Director of Camp Evergreen.

Though Center for Hospice Care's bereavement team, along with other CHC and Hospice Foundation staff contribute to Camp Evergreen's success, this amazing experience is made possible through the dedication and assistance of the volunteers who donate their time.

For more information on Camp Evergreen, contact Holly Farmer at 574.255.1064 or [farmer@centerforhospice.org](mailto:farmer@centerforhospice.org).



Campers take part in many activities during the camp, including building a memory box to remember their loved ones and the ropes course. But what most campers talk about first is their relationship with their volunteer buddy.

## Tee it up for Hospice

**15th Annual NAIFA Golf Outing  
honoring Joseph E. Smith  
at Blackthorn Golf Club  
AUGUST 7TH, 2013**

### Proceeds from this event benefit



**\$75 per person or \$300 per foursome  
Includes golf, cart, and lunch following**

**For more information contact Cliff Perras  
at 574.232.3973 or [ceperrasjr@aol.com](mailto:ceperrasjr@aol.com)**



**Great Door Prizes Available**



## FUTURE EVENTS AND HOSPICE HAPPENINGS

## Same Great Cause – New Date and Location!

Add this event to your summer calendar of “must do” activities. The Riverwalk, officially named the “River St. Joseph of the Miamis Trail” is a beautifully landscaped, handicap-accessible pathway on both banks of the river with pedestrian footbridges connecting city parks. Registration, the walk start and finish will be held at the new Robert C. Beutter Riverfront Park. Walkers may tour Kamm

This year's event will continue to feature a fun, family-friendly atmosphere with music, children's entertainment and free snack stops, as well as the Celebration of Remembrance and Memory Wall for walkers to share personal tributes in honor of their loved ones. Registration is still completely FREE; however, pre-registered walkers who collect fundraising pledges of \$35 or more will receive the

The Walk for Hospice is one of the area's longest-running walk fundraisers. Join your good friends and neighbors in support of keeping Center for Hospice Care services available to everyone in our community, regardless of their ability to pay. If you walked for Center for Hospice in Plymouth, Elkhart, South Bend or Lakeville in the past, or if you haven't walked with us yet, plan to celebrate the same great walk for the same great cause, Center for Hospice, on our new date in our new location! Contact Lisa Kelly, [KellyL@CenterforHospice.org](mailto:KellyL@CenterforHospice.org) or 574.243.3119, for information or to volunteer at the event.

Through its support of Center for Hospice Care, Hospice Foundation helps patients and their loved ones experience the best possible quality of living regardless of healthcare insurance or an ability to pay.

- Hospice
- Home Health
- Grief Counseling
- Community Education

Caring for patients in Elkhart, Fulton, Kosciusko, LaGrange, LaPorte, Marshall, St. Joseph and Starke Counties in northern Indiana.



choices to make the most of life



To learn more or self-refer, call anytime. 1-800-HOSPICE or [CenterForHospice.org](http://CenterForHospice.org)





# ON THE HORIZON

FUTURE EVENTS AND HOSPICE HAPPENINGS

## 5th Annual Bike Michiana for Hospice

### Save Money by Registering Early and Get a Headstart on Earning Fundraising Incentives

The spring weather is just around the corner. No time like the present to start putting together your summer riding schedule. Be sure to keep September 15, 2013 open for the 5th Annual Bike Michiana for Hospice!

Last year's event was the biggest and most successful yet, with nearly 1,000 riders and fundraising exceeding expectations with over \$26,000 in donations! Organizers hope to exceed both of those numbers this year.

Registration opened in mid-January, with early registration running until May 1st. Registration is just \$35 before the deadline and then \$40 from May 1st until August 15th. From August 15th through September 13th cost is \$50, with a \$60 day-of fee.

Last year, fundraising incentives were added as a way to encourage riders to bring in donations. The program was such a success that we are bringing it back this year. Riders bringing in donations of \$50 will receive a pair of logoed SmartWool riding socks; donations of \$100 earn a rider a ride t-shirt; donations of \$250 earn a commemorative ride jersey. Any rider bringing in \$450 or more in donations receives all three items.

Riders are able to set up a Personal Fundraising page when they register online. Just follow the link in the confirmation email. For more information or to register for the event, visit [www.bikemichianaforhospice.org](http://www.bikemichianaforhospice.org). Keep up with what's happening by liking our Facebook page.



## Hospice Foundation Calendar of Events

We look forward to your participation in and support of these important events. Please check our web site, [www.foundationforhospice.org](http://www.foundationforhospice.org), for more information and event dates throughout the year.

### April 2013

- **April 25-28**  
NHPCO Management & Leadership Conference  
[www.nhpco.org](http://www.nhpco.org)

### May 2013

- **May 1**  
Nurses Day
- **May 1**  
Helping Hands Award Dinner

### June 2013

- **June 7-9**  
Camp Evergreen
- **June 10**  
National CNA Home Health Aides Day

### August 2013

- **August 11**  
Walk for Hospice  
[www.walkmichianaforhospice.org](http://www.walkmichianaforhospice.org)

### September 2013

- Leukemia and Lymphoma Awareness Month  
[www.lls.org](http://www.lls.org)
- **September 15**  
Bike Michiana for Hospice  
[www.bikemichianaforhospice.org](http://www.bikemichianaforhospice.org)

### October 2013

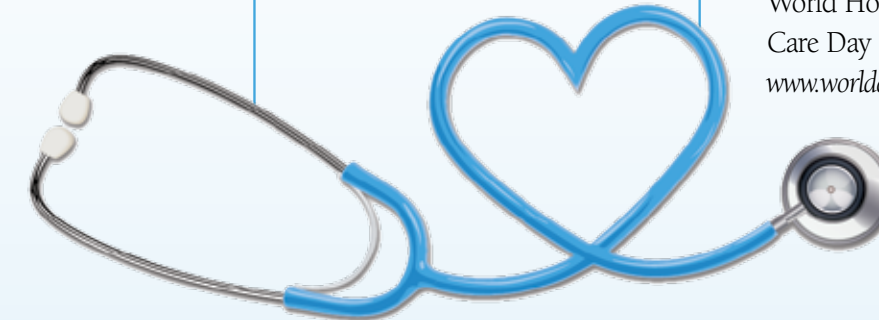
- **October 11**  
World Hospice and Palliative Care Day  
[www.worldday.org](http://www.worldday.org)

2013  
*calendar*

### November 2013

- National Hospice Month  
[www.nhpco.org](http://www.nhpco.org)
- National Family Caregivers Month

**Find us on:**





## Intro to Hospice and Palliative Care Class

### One Day in a Classroom Can Lead to a Lifetime of Caring

The University of Notre Dame is world-renowned for the education it provides. Center for Hospice Care is in the top 5% of US hospices in the number of patients served. These organizations recently teamed up to offer a unique, one-credit hour course for Notre Dame students called, "Introduction to Hospice and Palliative Care." The class was designed to provide undergraduate students with an introductory understanding of palliative and hospice care.

Class organizers were once again pleasantly surprised to see so many students (95 in all) enroll in the all day Saturday class. The course was first offered on campus in the

Fall Semester of 2011 and included more than 80 students.

The class included students from a number of pre-professional studies programs with the vast majority of them being those particularly interested in pursuing careers in medicine. "Educating future health care providers about the hospice concept and introducing them to the benefits hospice and palliative care provides those facing serious, life-limiting illnesses is at the core of the mission of The Hospice Foundation," said Mike Wargo, COO of the organization. "The collaborative nature of this class is a direct reflection of the hospice approach to care as well."

The day-long course covered a variety of topics focusing on how hospice and palliative care is given in the current healthcare system. Students were also given an introduction in the compassionate interpersonal communication skills required in caring for those in need of palliative care or who are dying.

According to one student, "While it was admittedly quite a long day, I gained invaluable insight into a field I initially knew almost nothing about, and I feel that whether or not my future directs me toward palliative care, the lessons I learned have great universal applicability among all health professions and I truly

feel that I will be better able to serve patients as a doctor due to the knowledge I gained here."

The class was taught by an interdisciplinary team that included physicians, nurses, social workers, and bereavement counselors as well as other hospice and palliative care staff.

Designed by Dominic Vachon, Director of Ruth M. Hillebrand Center for Compassionate Care in Medicine, and Mike Wargo, the course included films, panel discussions, lectures, and a mock interdisciplinary team meeting.

"This collaboration between the Center for Hospice Care and Notre Dame has led to what appears to be a transformative educational experience for these

students, many of whom will go into medicine. Despite the length of the day and the seriousness of the topic, students overwhelmingly are grateful for what they receive from the staff of Hospice who are the main faculty for the course. They spontaneously tell us in their papers and comments how much this was helpful for them and how helpful the material will be for their personal and professional lives," says Vachon.

Topics included among the day's 12 different presentations were: Understanding the Hospice Model of Care; The Physician's Role in Hospice and Palliative Medicine; The Hospice Nurse as Care Coordinator; Palliative Care: My Journey as an Oncologist and the Grieving Process.

Pictured Left to Right: CHC Chief Medical Director Dr. Gregory Gifford presents to the class

CHC President/CEO Mark Murray shares the history of CHC

A panel discussion with CHC Spiritual Care Counselor Marge Braden, Dr. Gifford, CHC Social Worker Chuck Kreps-Long, CHC Director of Nursing Donna Tieman, and CHC Bereavement Counselor Michele Guldborg

Director of the Ruth M. Hillebrand Center for Compassionate Care in Medicine Dominic O. Vachon, M.Div., PhD addresses the class

CHC Volunteer Recruitment Coordinator Valorie Eads, along with Gunner, a pet therapy volunteer dog, discusses the benefits of pet therapy

Dr. Daniel Bruetman, MD, MMM, Director of Medical Oncology at the IU Health Goshen Center for Cancer Care gives his take on hospice care from the eyes of an oncologist





## Crowdfunding for PCAU

### Hospice Foundation Aims to Crowdfund One Student in Clinical Palliative Care Course

When the Hospice Foundation chose the title of its short documentary film about palliative care in Uganda, “we wanted a phrase that signified both hope and action. The word we chose was okuyamba, the Lugandan word meaning ‘to help,’” said Mike Wargo, COO of the Hospice Foundation and the film’s producer.

The Hospice Foundation continues to assist the Palliative Care Association of Uganda (PCAU) in their mission to provide palliative care to those who need it most. The challenges are staggering. Of the country’s 112 districts, only 62 have health care workers trained in palliative care.

One of the most important ways in which the Hospice Foundation helps to support PCAU’s work is to fund the training of Ugandan health care workers as palliative care specialists. These health care workers, who are recruited from districts with little or no palliative care service, complete a year long Clinical Palliative Care Course (CPCC) in the country’s capital city of Kampala. Following training they return to their workplace as leaders in the district’s development of palliative care provision for those who have no other access to skilled care as they face the end of life.

This course provides students with advanced knowledge that enables them

to treat the physical, emotional, psychosocial, and spiritual pain of patients and their families. Program graduates are also recognized by the Ugandan government as “prescribers” and are then able to prescribe morphine, the drug of choice for pain control.

In the past three years, through a combination of employee giving and grants, the Hospice Foundation has funded 11 students to participate in the CPCC program. Plans are underway to expand the program to as many as 10 students in 2013.

The foundation is working with FHSSA (formerly Foundation for Hospices in

Sub-Saharan Africa) to raise money for this initiative through a crowdfunding platform. Crowdfunding is an online, community-oriented way to support important initiatives and has been used successfully for disaster relief and other worthwhile causes. You can view this initiative, called “You Can Okuyamba,” at <http://crowdfunding.fhssa.org/campaign/detail/535>.

The Hospice Foundation has set a goal of raising \$4,000 in 60 days, which will fund the training, travel, room and board for one health care worker to complete the educational requirements for this specialized field of medicine.



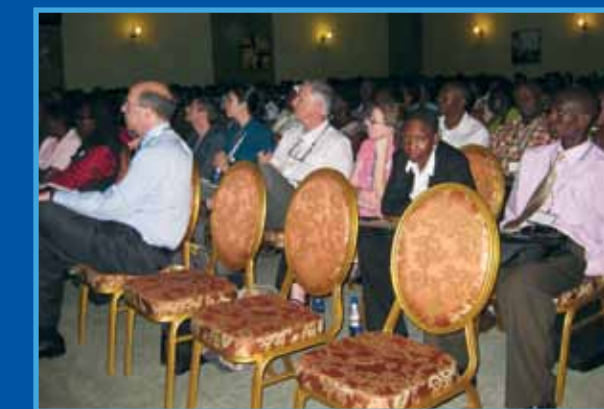
## PCAU 5th Biannual Conference

Every two years, the Palliative Care Association of Uganda brings together stakeholders in palliative care at its biannual conference. It is an opportunity to share knowledge and experiences about advancements in palliative care both locally and internationally. The 2013 PCAU Conference is scheduled for August 29-30 in Kampala Uganda. The theme of this year’s conference is “Caring and Sharing.”



Conference tracks include:

1. Palliative clinical care
2. Palliative care for special groups including: children, the elderly, soldiers, prisoners, pain control in sickle cell disease and long-term disability
3. Ethics and dignity
4. Spiritual and psychosocial issues
5. Models of palliative care delivery



The conference will bring together 500 local and international participants to celebrate successes, share practical experiences in PC service provision and lessons learned, which will contribute to further enhance palliative care in Uganda.

To learn more about the conference or to register, visit <http://pcauganda.org/5th-bi-annual-conference/>

*Photos from 2011 Biannual Conference*



# Helping Hands Award Dinner 2013

## Celebrating Life – Honoring Ann Manion

This year's Helping Hands Award Dinner will honor Ann Manion, volunteer president of Women's Care Center. The theme, "Celebrating Life," was selected in recognition of Ann's work at Women's Care Center as well as in recognition of Center for Hospice Care and its dedication to improving the quality of living.

Since it began in 1985, the Helping Hands Award Dinner has honored an individual, couple or family who demonstrates civic and charitable stewardship to improve the quality of living in the communities served by Center for Hospice Care. The award recognizes the recipients for exhibiting generosity, outstanding community achievements, direct financial support, or by motivating others to give.

We recognize that there are those people whose work shines outside the spotlight of public notice. They give selflessly and patiently of themselves, never seeking recognition for the time and talent they dedicate to their cause of choice.

One such person is Ann Manion. Since 1988, she has served as volunteer President of Women's Care Center, the nation's largest pregnancy resource center. She was also a founding board member of Hannah's House, a maternity home for pregnant teenagers, jointly founded by St. Joseph Hospital of Mishawaka and Women's Care Center in 1993.

During her tenure as president, Women's Care Center has grown from one small center on St. Louis Boulevard to 17 sites in Indiana, Michigan, Ohio, and Wisconsin. The organization has an additional four licensee centers in Indiana, Illinois, Wisconsin, and Minnesota. It is a testament to Ann's leadership that Women's Care Center is funded solely through donations.

Ann was a member of the second class of women to gain entrance to the University of Notre Dame, graduating magna cum laude in 1977 with a bachelor's degree in business administration. She was a

senior manager with Price Waterhouse from 1977-1988. Ann is married to Daniel Manion, a retired judge from the 7th Circuit Court of Appeals. They have four children – Mary, Katherine, Patrick, and Michael – ranging in age from 14 to 24.

Through her work at Women's Care Center, Ann has positively impacted the lives of thousands of people in Elkhart, LaPorte, Marshall, and St. Joseph Counties in Indiana and we are pleased to honor her accomplishments at this year's Helping Hands Award Dinner.

The 2013 event will be held on Wednesday, May 1st at the Hilton Garden Inn South Bend, beginning with a cocktail reception at 6 pm. Dinner will begin at 7 pm, in the Fleur de Lis Ballroom.

Online reservations are available at \$150/person and can be made at [www.foundationforhospice.org/hhad13](http://www.foundationforhospice.org/hhad13). For more information on the event please contact Lisa Kelly at 574.243.3119 or [KellyL@centerforhospice.org](mailto:KellyL@centerforhospice.org).





# HEART OF HOSPICE

HOSPICE INVESTMENT AND DONATION INFORMATION

## Donor Profile: Gates Automotive Group

“Everyone has a story,” said Matt Helmkamp, President of Gates Chevy World, in reference to the many reasons that Gates Automotive Group began an innovative employee-giving program a few years ago. The company had supported – and still does – the United Way, but after hearing of how employees’ lives were impacted by local non-profit organizations decided to take a more hands-on approach to giving.

They started by forming a community support team who was given the task of compiling a list of charities they wanted to support. From the initial list of twenty organizations, the group whittled it down to a handful that had made the most impact on Gates employees. Currently, those are Five-Star After School Program, Center for Hospice Care, United Way and Michiana Down Syndrome Family

Support and Advocacy Group. “Those groups could change, depending on the input the community support team gets from our employees... We’ve been in the community a long time and we all feel the responsibility to give back.”

He added, “Center for Hospice Care has struck an emotional cord with so many of our employees. Almost everyone here has had someone needing hospice care... we’ve heard, ‘my parent had hospice caring for them and I want to make sure others can have the same experience.’”

Gates Automotive Group is part of this region’s storied automotive history. It began in 1928 when L.O. Gates opened a dealership in Plymouth. In 1939, the first Gates store in South Bend opened downtown; Gates began its relationship with Toyota in 1983. The

group now has locations on the south side of South Bend, Mishawaka and will soon open a new store in Granger. Four generations later, and with more than 200 employees, the automotive group continues to be a vital part of the area’s business backbone.

The employee-giving program is augmented with matching gifts from Gates Automotive Group and Toyota, each of whom adds \$2,500 to the pot. The resulting amount is then split among the non-profit organizations. The sense of being good corporate citizens is echoed at the Gates Chevy location in the form of a quote from L.O. Gates that is painted on the wall of the customer lounge: “Fair dealings are a must when your neighbors are your clients.”



Matt Helmkamp, President of Gates Chevy World (l), and Joel Gates, President of Gates Toyota (r).



Community Corner

The Hospice Foundation is grateful for the generosity of the many groups that support its mission through their independent fundraising efforts, grantsmanship and donations. Although we cannot recognize every effort, we are pleased to take this opportunity to recognize the following and thank all of those in the community who support our agency.

**Kappa Kappa Kappa (Tri Kappa Culver Associate Chapter)** donated \$100 to CHC.

**Club 15AA** held a golf tournament and raised \$1,500 to benefit CHC.

**Radiology Inc.** held a blue jeans day for employees and raised \$215, donated to CHC for our annual Bike Michiana for Hospice event.

**Eck & Associates, Inc.** donated \$100 to CHC for the tremendous job we do in our community.

*Due to Internal Revenue Service tax regulations, we may only issue written acknowledgement for donations made payable to and/or processed directly by Center for Hospice Care or The Hospice Foundation. Donations made and/or processed via a third party may not be eligible for a charitable tax donation. If you have any questions regarding charitable contributions, contact Mike Wargo, Chief Operating Officer, at 574.243.2059 or wargom@centerforhospice.org. For specific tax advice, you should visit the IRS website at www.irs.gov or contact your tax advisor.*



PEI-Genesis

PEI-Genesis held a food drive, dividing their staff into three teams, each representing a different charity. The team bringing in the most food was awarded \$500 to give to their designated charity. The team representing Center for Hospice Care brought in the most food. All food was donated to the Northern Indiana Food Bank and CHC received a check for \$500.

Schmucker Middle School

The Schmucker Middle School Junior Honors Society held a bake sale where they sold baked goods, decorated pumpkins and Center for Hospice Care’s (CHC) cookbooks, raising \$286.35 for CHC.



Red Knights Motorcycle Club

The Red Knights Motorcycle Club (RKMC), Indiana Chapter 8, hosted their third annual The Trail of Dragoon on Saturday, June 9th. The Run For Compassion ride raised money for Center for Hospice Care (CHC). A check for \$2,500 was presented to CHC at RKMC’s fall meeting. In three years, the event has raised \$4,100 for CHC.

The RKMC is an international group made up of firefighters, active or retired, volunteer or industrial. The members of Indiana Chapter 8 choose CHC to benefit from their ride because of the impact the organization has had on many of their members.



Hospice Foundation COO Mike Wargo is presented a check by members of the Red Knights



Circle of Caring

To further our mission to improve the quality of living for those we serve regardless of one’s ability to pay, The Hospice Foundation implemented a donor giving program: Circle of Caring. Membership in the Circle of Caring entitles donors to benefits based on the level of the donor’s cumulative annual support. CHC and The Hospice Foundation express their appreciation and honor our members in the following societies:

*Recognition in this issue covers gifts received from July 1, 2011 to December 31, 2012.*

Chairman Circle  
\$10,000 and above

- 1st Source Foundation
- Anonymous
- Anonymous
- Chamber of Commerce of St. Joseph County
- Mr. Arthur J. Decio
- Elkhart General Hospital Foundation
- Mr. and Mrs. J. Edward French
- Mr. and Mrs. Steven L. Garatoni
- In Memory of Charles C. Hinds
- Dr. and Mrs. Samuel L. Milligan
- Mr. Mark M Murray
- NAIFA of North Central Indiana
- NIBCO Inc.
- Mrs. Ernestine Raclin
- St Joe Valley Street Rods
- The Streffling Foundation
- Mrs. Jane J. Warner

- Ladue Curran & Kuehn, LLC
- Lake City Bank
- Evelyn Major Fund
- McDonalds/KADA Partnership
- Memorial Hospital and Health Systems
- Mr. and Mrs. Christopher J. Murphy, III
- Ms. Katherine Z. Osmanski
- Mr. and Mrs. Terry J. Rodino
- South Bend Medical Foundation
- South Bend Orthopaedic Associates
- South Bend Sodbusters Inc.
- Dr. and Mrs. Kurt H. Stiver
- The Foundation of Saint Joseph Regional Medical Center
- University of Notre Dame – Public Affairs and Communication
- Mr. and Mrs. Peter Veldman
- Mr. and Mrs. Thomas F. Veldman
- Mr. and Mrs. Dennis Wedsworth

- Mrs. Janette Burkhart-Miller
- Mr. Russell L. Busse
- Mrs. Mary Ann Butts
- Cafe Max, Inc.
- Carleton, Inc.
- Mr. LaVerne R. Carlson
- Mrs. Carol J. Case
- Cassady, Neeser & Brasseur
- Mrs. Jeanne Cassler
- Mr. and Mrs. David B. Chapman
- Mr. and Mrs. J. Christopher Chocola
- Club 15
- Ms. Linda Costas and Mr. Richard Phelps
- Mr. and Mrs. Donald G. Cressy/The Cressy Foundation
- Crowe Horwath LLP
- Dr. and Mrs. Frederick K. Dean
- Mrs. Judith A. DeFries
- Bill Deputy Foundation
- Mrs. Josephine Dibley
- Mrs. Barbara A. Dillon
- DJ Construction Co
- Mr. Ralph W. Dobson
- Mr. Kyle L. Dooley
- Mr. and Mrs. Bipin Doshi
- Dr. and Mrs. James DuCanto
- Mr. and Mrs. Corey E. Dukai
- Mr. and Mrs. Dennis Dulcet
- Mr. and Mrs. Thomas L. Dusthimer
- Mr. and Mrs. Matthew E. Edmonds
- Judi and Jim Edmundson
- Dr. Carol Ann Mooney and Mr. George J. Efta
- Dr. and Mrs. Michael A. Englert
- Faegre, Baker & Daniels
- Mr. and Mrs. William C. Fenech
- Mr. Robert S. Ferency
- Ms. Elizabeth Ferlic and Mr. Nathan J. Lazenga
- Mr. Gavin Ferlic
- Susan and Tom Fischbach
- Joyce and Roger Foley
- The Fore Guys, L.L.C.
- Mr. Bruce J. Foster
- Dr. and Mrs. Rodney F. Ganey

- Mrs. Janet L. Garber
- Mrs. Jean Gasper
- Gates Automotive, Inc.
- Gates Toyota Inc.
- Mr. Dale L. George
- Gerig Surgical Associates, PC
- Mr. and Mrs. Walter D. Gildner
- W. Glenn Gordon Revocable Trust
- Mr. and Mrs. Cary Goss
- Grubb & Ellis/Cressy & Everett
- Mr. and Mrs. Michael J. Hammes
- Ralph M. and Lucille M. Hass Fund
- Mr. and Mrs. Richard Hassi
- Mr. W. G. Hegg
- Ms. Peggy J. Henderson
- Mr. and Mrs. C. E. Hilier, Jr
- Mr. and Mrs. Larry Hilier
- Mrs. Maren S. Hogberg
- Mr. and Mrs. Karl E. Holderman
- Mr. and Mrs. Kenneth E. Holderman
- Mr. Jeff C. Holtzclaw
- Holy Cross College
- Mr. Alan D. Hummel
- Mr. Charles P. Hurwich
- Indiana Trust & Investment Management Co.
- Indiana University Foundation
- InServ Environmental Services
- Interlogic Outsourcing Inc.
- Mr. and Mrs. Scott M. Johnson
- Mr. and Mrs. Michael A. Joines
- Mrs. Mary H. Jones
- Jordan Industries
- Mr. Edward M. Jordanich
- Mr. James A. Kazmierczak
- Ms. Laurie K. Keenan
- Dr. and Mrs. James P. Kelly
- Ms. Lisa R. Kelly and Mr. Robert G. Douglass
- Mr. J. Paul Kendle
- Ms. Jill C. Kennel
- Mr. and Mrs. Donald T. Kindt
- Mr. and Mrs. Don L. Krabill
- Andrew J. & Florence A Krizman Charitable Foundation
- Mr. and Mrs. David M. Krzyzaniak

- Dr. and Mrs. Jon B. Kubley
- Mr. and Mrs. Donald R. Kyle
- Mr. Brian M. Leitner
- Mrs. Jill A. Lester
- Lexus of Mishawaka
- Mrs. Barbara C. Lobdell
- Mrs. Lyla S. Lockhart
- Logan Community Resources
- Mrs. Mary Jo Ludwick
- Mrs. Claire L. Luther
- Jessica and Paul Maich
- Ms. Kathleen Malone Beeler and Mr. Brian C. Regan
- Mr. and Mrs. John K. Martin
- Mr. and Mrs. Tom Mathews
- Mrs. Betty J. Maurer
- Ms. Amy Kuhar Mauro
- Mr. James W. McCann
- Mrs. Helen McDonald
- McDonough Foundation
- Michiana Hematology-Oncology, PC
- Michiana Mustangs
- Edward V. and Margaret A. Minczeski Fund
- Mr. and Mrs. Scott F. Moller
- Ms. Melinda A. Moon and Mr. Thomas Clayton
- Mr. Roger F. Morris
- The Office of Tony Mudd
- Mr. Alan H. Nadon
- Mr. Stephen P. Nani
- Mr. and Mrs. J. Thad Naquin
- Mrs. Mary E. Naquin
- Mr. Lewis M. Naylor
- Mr. and Mrs. Philip A. Newbold
- Mr. Clarence E. O’Connell
- Office Interiors, Inc.
- Ms. Patty O’Hara
- Old National Bank
- Dr. and Mrs. Patrick F. O’Malley
- Ms. Mary G. Osmanski
- Mr. Robert C. Osmanski
- Ms. Ann M. Pados
- Mr. Bradley A. Parsons
- Patrick Industries, Inc.

- Peopelink Staffing Solutions
- Mr. John G. Pfeil
- Mr. and Mrs. Patrick Pinnick
- Mrs. Rose M. Plank
- PNC Bank
- Q’Straint
- Quality Dining, Inc.
- The Radiology Inc. Foundation
- Recycled/New Pallets
- Red Knights Indiana 8
- Ms. Barbara Resnik
- Mr. and Mrs. Barrie Ricketts
- Robinson Family Foundation
- Kelly L. and Karen Rose Foundation
- Rosenthal Partners Capital Advisors
- Mr. and Mrs. Peter K. Rumely
- Mr. and Mrs. John P. Russo
- Mr. and Mrs. Douglas J. Ryback
- Mrs. Florence M. Sargent
- Mr. and Mrs. Elmer Schrock
- Mr. and Mrs. Todd Schurz
- Mr. John S. Schymanski
- Cyndy and Steve Searfoss
- Shamrock Development Inc
- Mr. and Mrs. Randy Sheneman
- Dr. and Mrs. William D. Shephard
- Mrs. Kathryn L. Shields
- Mr. and Mrs. Ralph C. Shive
- Mr. Enrique Siguenza
- Simonton Lake Sportmans Club
- Mr. and Mrs. Gregory G. Singleton
- Mr. and Mrs. David V. Smith
- Sopko, Nussbaum, Inabnit and Kaczmarek
- Steel Warehouse Company, Inc.
- Ms. Pamela K. Stephenson
- Mrs. Isabel A. Stickley
- Mr. and Mrs. Shane A. Stopczynski
- Mr. and Mrs. Ronald Strezalecki
- Ms. Cynthia L. Harris and Mr. Craig D. Sullivan
- Dr. Gary M. Sunada
- Mrs. Barbara Szabo
- Mr. and Mrs. Fred Anthony Tansey
- Dr. Richard W. Tarara





Circle of Caring

Helping Hands Society  
\$1,000 to \$4,999 (cont)

Teachers Credit Union  
Dr. and Mrs. James W. Tieman  
Mrs. Amy E. Tribbett  
Mr. and Mrs. Malcolm J. Tuesley, Jr  
United Way of Central Maryland  
United Way of Elkhart County, Inc.  
United Way of Marshall Co., Inc.  
United Way of Tri-State  
Veldman's Auto Parts Inc.  
VFW Father's Auxiliary Post 49  
Mr. Martin E. Wagner  
Wal Mart Supercenter #3436  
Mr. and Mrs. Wendell W. Walsh  
Mr. William D. Walter  
Mr. and Mrs. Michael J. Wargo  
Mrs. Barbara K. Warner  
Mr. and Mrs. David A. Weed  
Mrs. Katie Whetstone  
Dr. and Mrs. Daniel E. White  
Mrs. Dorothy Wiekamp  
Mr. Joseph D. Winer  
Mr. and Mrs. Patrick L. Wolf  
Mr. Robert E. Wozny  
X-Ray Consultants, Inc.  
Mr. Robert D. Zimmerman  
The Zeglis Family Charitable  
Foundation Trust

Heart of Hospice Club  
\$500 to \$999

Mr. and Mrs. John S. Abernethy  
The Ancilla Domini Sisters  
Mr. Lowell D. Anglin  
Mr. and Mrs. Robert W. Annis, Jr.  
Anonymous  
Anonymous  
Anonymous  
Mr. Reginald F. Bain  
Mr. and Mrs. Francis Baldino  
Mr. and Mrs. Jeffrey A. Balsley

Mr. and Mrs. Peter Baranay  
Mrs. Deborah A. Barton  
Ms. Sharon L. Basham  
Mrs. Kimberly Bassett  
Mrs. Karyn Beach  
Ms. Cassie A. Bell  
Mr. and Mrs. Christopher M. Blad  
Mrs. Loretta Borowski  
Mr. and Mrs. Scott Brennan  
Mr. Charles F. Brodt  
Mr. Thomas J. Busch  
Mr. and Mrs. Paul J. Cafiero  
Ms. Catherine M. Cale  
Mr. and Mrs. Patrick A. Carrico  
Mr. and Mrs. Jerry W. Cavanah  
Mr. and Mrs. Eugene L. Cavanaugh  
Century Builders  
Dr. Joseph Cerbin  
Mr. and Mrs. Stephen W. Clinton  
Mr. Richard B. Collins, Jr  
Communication Company of South  
Bend  
Mr. John A. Craigo  
Mr. and Mrs. Scott A. Crist  
Mr. Eugene F. Crook  
Mr. and Mrs. Thomas N. Cukrowicz  
Ms. Anita K. Culp  
Culver Tool & Engineering, Inc.  
Mr. Edward F. Delker  
Mr. and Mrs. Tim E. Demarais  
DeWulf LLC  
The Diocese of Fort Wayne-South  
Bend, Inc.  
Mr. Norman J. Dolak  
Mr. Gary L. Dominy  
Dynamic Mechanical Services, Inc.  
Mrs. Rosemary Echard  
Mr. Jim R. Finneran  
Mr. Trevor Foley  
Mr. James R. Fowler  
Mr. and Mrs. Douglas R. Freeman  
Mr. and Mrs. Charles P. Fricano  
Mr. and Mrs. George B. Friend  
Mr. and Mrs. Morton S. Fuchs  
Mr. and Mrs. Stephen A. Gardner

Meenu Garg  
Geocel Corporation  
Gerig Surgical Associates, PC  
Lawrence E. Glick Family Foundation  
Ms. Vicki Gnoth  
Mr. and Mrs. Raymond F. Goepfrich  
Mr. and Mrs. William P. Grace  
Grunawalt Baer Financial  
GSSC, Inc.  
Mr. and Mrs. Ted Halbritter, III  
Mr. David P. Hancock  
Mr. Dwight D. Handschu  
Mrs. Darlene Hawkins  
Mr. and Mrs. Werner Haynes  
Mrs. Susan Heartwell  
Mr. and Mrs. Randall Hein  
Mr. and Mrs. Eric R. Heller  
Helman Sechrist Architecture  
Mrs. Cathaleen Hemminger  
Holy Cross Village at Notre Dame, Inc.  
Mrs. Kristina Hood  
Hoosier Racing Tire Corp.  
HRP Construction Inc.  
Mr. Ronald K. Hughes  
Mr. and Mrs. Robert A. Hurst  
Dr. Anthony K. Hyder  
Hydro Aluminum  
Mr. and Mrs. Greg A. Hyduk  
J & N Stone Inc  
Mr. and Mrs. Paul F. Janssen  
Mr. Daniel R. Johnson  
Mr. and Mrs. Gordon Johnson  
Mr. and Mrs. Larry A. Johnson  
Mr. Stephen C. Johnson  
Marijo and Kevin J. Kelly  
Governor and Mrs. Joseph E. Kernan  
Mr. and Mrs. Robert Kil  
Mr. and Mrs. Thomas R. Kinnucan, Jr  
Mr. Alexander N. Kish  
Mr. and Mrs. Lawrence A. Koepfle  
Mr. Henry Kolski  
Koontz Lake Association, Inc.  
Krieg Devault LLP  
Mr. and Mrs. Michael S. Krizman  
Mr. and Mrs. Arthur Krol

Mrs. Elizabeth F. Lattanner  
Laven Insurance Agency  
LaVille Youth Soccer  
Ms. Terri J. Lawton  
Leighton-Oare Foundation, Inc.  
Mr. and Mrs. Michael A. Lintner  
Mr. John H. Lloyd, III  
Mrs. Jill A. Logan  
Ms. Christine Madlem  
Mr. and Mrs. Stephen A. Maenhout  
Mr. Norman S. Makielski  
Mr. Jeremy Martin  
Lt. Col. Robert D. Martin, Sr  
Ms. Michalen Maternowski  
Mr. and Mrs. Brian Y. McCay  
Marilyn McGrane  
Mr. and Mrs. Laurence A. McHugh  
Dr. and Mrs. Stephen T. McTigue, Jr  
Mr. and Mrs. Marcus S. Miller  
Mrs. Orpha M. Miller  
Miller's Merry Manor - Warsaw  
Ms. Denise E. Morton  
Mr. and Mrs. Kelly Moyer  
Mr. and Mrs. John H. Nelson  
Mr. and Mrs. Ronald W. Nemeth  
Notre Dame Federal Credit Union  
Mr. Patrick D. Novitzki  
ObeCo, Inc  
Ms. Candace A. Oltman  
PEI-Genesis Inc.  
Mr. Kobi Pincus  
Mr. Lloyd H. Puntney  
Mr. Brian Randall  
Mr. Paul H. Randall  
Dr. and Mrs. Mark A. Richter  
River Bend Hose Specialty, Inc.  
Mr. and Mrs. Jason Russell  
Mr. Gregory J. Ryback  
Reverend Daryl M. Rybicki  
Mr. Walter E. Sanders  
Mrs. Betty L. Sandstrom  
Mr. and Mrs. Robert M. Schosker, Jr  
Mr. and Mrs. Kevin J. Sexton  
Ms. Bridget Smith  
Mr. Michael W. Smith

Mrs. Karen Smith-Taljaard and Mr.  
Robert Guthrie  
Mr. and Mrs. Andrew J. Sommese  
Mr. and Mrs. Thomas C. Sopko  
The South Bend Clinic, LLP  
Roberta and Thomas Spencer  
Ms. Mary E. Stanfield  
Mr. and Mrs. Donald L. Stanley  
Mr. and Mrs. William P. Stanley  
Ms. Joyce Staszewski  
Mr. Allen J. Steenbeke  
Mr. and Mrs. Richard A. Stefaniak  
Ms. Shirley Stevens  
Mr. and Mrs. Richard Q. Stifel  
Mr. and Mrs. Steven A. Strong  
Mr. and Mrs. Gregory L. Suderman  
Mr. Jake Taylor  
Mrs. Mary Townner  
Trinity Health  
United Way of Central Indiana, Inc.  
United Way of St. Joseph County Inc.  
Mr. Richard A. Vaerewyck  
Mr. and Mrs. Chad M. Vanderbeek  
Mr. and Mrs. Michael R. VanNevel  
Mrs. Sharon Waggoner  
Mr. Patrick Wargo  
Mr. Fred R. Warstler  
Mr. and Mrs. Thomas J. Wcisel  
Ms. Joyce M. Wegs  
Mr. and Mrs. R. Duane Welch  
Mr. and Mrs. Christopher M. Whitney  
Dr. Douglas J. Wilson  
Mr. and Mrs. Stephen E. Yeater

Caregiver's Alliance  
\$250 to \$499

ABRO Industries  
Mrs. Linda Alexander  
Ms. Kathryn Allen  
AM General  
American Legion Post 27  
Mr. Joseph S. Andrews  
Mr. and Mrs. Stephen A. Anella

Anonymous  
Anonymous  
Anonymous  
Anonymous  
Asphalt Restoration Services  
Mr. and Mrs. Edgar J. Baert  
Mr. Gregory K. Balogh  
Mr. Rick Baron  
Mr. and Mrs. Rob Bartels, Jr.  
Mr. and Mrs. Monte Beaudway  
Mr. Roy L. Beck  
Mrs. Virginia Beehler  
Mr. Lester D. Berger  
Ms. Mary R. Bernard  
Best-One Retreading of South Bend  
Mr. and Mrs. Brad C. Beutter  
Mr. and Mrs. Gerry E. Bidlack  
Mr. and Mrs. David R. Biek  
Dr. Paul Bleiweis  
Dr. and Mrs. Richard C. Boling, II  
Mrs. Lyndell Bonney  
Dr. and Mrs. Wilber C. Boren  
Mr. John A. Borgerding  
Mr. and Ms. Simon A. Borkholder  
Mr. Max Bottorff  
Mrs. Rachel Boyd  
BPOE – South Bend Lodge No. 235  
Reverend Marge Mason Braden  
Mr. and Mrs. Edward M. Bradford  
Bremen Castings, Inc.  
Bremen United Methodist Church  
Mr. Rex A. Brown, Jr  
Mrs. Lisa Brunkhorst  
Ms. Geraldine J. Bukowski  
Mr. and Mrs. John T. Bycraft  
Dr. and Mrs. Jeffrey L. Cain  
Carris Reels Inc  
Mr. Michael G. Cater  
Mr. and Mrs. Michael D. Caurro  
Centier Bank  
Mr. Stefan Cerbin  
Ms. Alice W. Chan  
Charles S. Hayes, Inc.  
Mr. and Mrs. Alfred H. Choitz

Mr. Peter Cholak  
Christ the King Church  
Christiana Creek Invitational Committee  
Mr. and Mrs. Kenneth A. Cinal  
Clay-Granger Lions Club  
Marian A. Clements  
Mr. and Mrs. Everett D. Colvin  
Mr. and Mrs. Fred Cooreman  
Mrs. Cheryl Corell  
Mr. and Mrs. David Cortright  
Cosentino & Chirstofeno Attorneys  
Mr. and Mrs. Charles L. Coughlin  
Patricia and Frank Criniti  
Mrs. Nora K. Crosen  
Mrs. Grace M. Curtis  
Mr. and Mrs. William W. Cushwa  
Mrs. Angela Dandino  
Mrs. Lucille O. Danielson  
Mr. and Mrs. David M. Davenport  
Mr. and Mrs. Douglas A. Davis  
Mr. and Mrs. Joel D. DeBruyne  
Mr. and Mrs. Nicholas J. DeCicco  
Mr. and Mrs. Kenneth L. Delinski  
Dr. Michael J. DeStefano  
Mr. Raymond C. DeVault  
Gerry Dickey  
Dicor Company  
Mr. and Mrs. Patrick E. Dittrich  
DLZ Corporation  
Mr. and Mrs. Bernard Doering  
Mr. and Mrs. Jeffrey A. DuBois  
Ms. Lori Duncan  
Mr. and Mrs. Scott S. Dunham  
Colonel and Mrs. Todd L. Eads  
Ms. Tara R. Eary  
Mr. Edwin S. Ehlers  
Mr. and Mrs. Phil Eicher  
Ms. Erica C. Ellenwood  
Ms. Christine H. Elliott  
Ms. Susan Elliott  
Energy Automation Systems Inc.  
Dr. and Mrs. Howard R. Engel  
Mr. and Mrs. Rudy Espinoza  
Mr. and Mrs. John G. Farrell  
Mr. Mark E. Feddern  
The Women of the First United Church  
of Christ  
Ivan W. Fisher Charitable Fund  
Mr. Nathan V. Fisher  
Five Star Sheets LLC  
Mr. Charles M. Fleming  
Mrs. Patricia M. Flowers  
Forum Architects, LLC  
Frank's Auto Body Inc

Mrs. Barbara Fredman  
Mr. and Mrs. George E. Freese  
Mr. and Mrs. David Frey  
Mr. Scott A. Fried  
Dr. and Mrs. Steven R. Gable  
Dr. and Mrs. Lawrence L. Garber  
Mr. and Mrs. John C. Gaylor  
Mr. and Mrs. John Geiger  
Dr. and Mrs. Steve Gerber  
Mr. and Mrs. Thomas J. Gerhold  
Helen A. Gillis  
Mr. and Mrs. Ronald Gion  
Mr. and Mrs. Gerald F. Goeller  
Ms. Tamara Golubski  
Mr. Ted Gorce  
Reverend Jonathan Gosser  
Ms. Judith F. Graham  
Mr. Joseph M. Green  
Mr. and Mrs. Christopher J. Gregory  
Mrs. Beryl Guzowski  
Sister Nora Hahn  
Ms. Lindsey A. Harbour  
Mrs. Annette S. Harris-Moreno  
Mr. and Mrs. Larry J. Hauguel, Sr  
Mr. and Mrs. Dan Heffelfinger  
Mr. and Mrs. Jeffrey P. Helman  
Mrs. Ursula Hess  
Mr. William G. Hicks  
Mrs. Christine M. Hill  
Mr. Dennis G. Hoffer  
Doris and Martin Hoffman Family  
Foundation  
Mrs. Artemis Hoke  
Ms. Jane Holler  
Mr. and Mrs. Garold D. Holloway  
Mr. Chris Horton  
Fern M. Hostetler  
Mr. and Mrs. James E. Houk  
Mr. Jim E. Houser  
Mr. and Mrs. James R. Howard  
Mr. Gregory A. Huber  
Mr. Robert C. Hueni  
Dr. and Mrs. Thomas A. Hughes  
Mrs. Betty L. Huneryager  
Mr. Roger D. Huneryager  
Mrs. Mary S. Hurley  
Indiana Community Bank  
Indiana State Council Knights of  
Columbus  
International Association of Asbestos  
Workers, Local #75  
JAMIL Packaging Corporation  
Mr. and Mrs. Thomas L. Jellison  
Ms. Sandra K. Jennings and Mrs. David  
A. Spychalski

Lt. Col. Bradley T. Johns  
Mr. Adam Jones  
Mrs. Brittney Jones  
Mr. and Mrs. Morris S. Jones  
Mr. and Mrs. Matthew Kahn  
Kappa Kappa Kappa (Beta Delta Chapter)  
Kappa Kappa Kappa (Beta Gamma  
Chapter)  
Mr. Charles E. Kelley  
Mr. and Mrs. Brad Kendall  
Mr. and Mrs. Phillip Kennedy  
Mrs. Mary R. Kerby  
Mr. and Mrs. Glenn E. Killoren  
Mr. Lewis D. Kimble  
Mrs. Michelle Kirkendall  
Miss Rebecca A. Kizer  
Mr. and Mrs. Walt Knake  
Mr. and Mrs. William J. Knight  
Mr. and Mrs. Ronald Koelndorfer  
Mr. and Mrs. John E. Krauser  
Mrs. Marjorie A. Kronk  
Mr. Michael J. Kruk  
Mr. and Mrs. James M. Krzyzewski  
Mr. and Mrs. Timothy J. Kujawski  
Mr. and Mrs. Joseph T. Kuzmitz  
Mrs. Laurie M. LaDow  
Lakeside Campground  
Mr. Brett E. LaMont  
Mr. and Mrs. Michael R. Lannoo  
LaPaz Lions Club  
Mr. and Mrs. Robert O. Laven  
Mrs. Kathleen L. Lawecki  
Mr. Gregory G. Lazarczyk  
Mr. and Mrs. Robert D. Lemanski  
Ms. Karen Lemmon  
Mr. David W. Leniski  
Mr. Gerald S. Leszczynski  
LL Geans Construction Co.  
Mr. Peter J. Lombardo, Jr.  
Mr. Dennis P. Long  
Mr. and Mrs. Stephen J. Luecke  
Mrs. Joan T. MacHatton  
Ms. Mary Ellen Maenhout  
Mr. and Mrs. Alan D. Mangus  
Mr. and Mrs. Earl Mansfield  
Mr. and Mrs. Abraham Marcus  
Mr. Terry T. Mark  
Marshall & Wells Company  
Martell Electric, LLC  
Dr. and Mrs. John C. Martens  
Mrs. Elaine M. McConnell  
Mr. and Mrs. Dan McElroy  
Ms. Tami McKenna  
Mr. and Mrs. Leo J. McKernan

Mr. Montel L. Menting  
Mr. and Mrs. Ward J. Merchant  
Mr. John A. Meuleman  
Ms. Jennifer Miller  
Mrs. Mary E. Miller  
Mr. and Mrs. Richard Miller, II  
Mrs. Wanda Miller  
Miller's Senior Living Community  
Ms. Marcia Minniti  
ML Brown & Associates  
Ms. Janet H. Monroe  
Mr. and Mrs. James H. Monserez  
Mrs. Reva Marie Moody  
Ms. Kathleen Moriarty  
Mr. Charles T. Morse, Sr  
Moser Motor Sales Inc.  
Mr. and Mrs. Darryl D. Much  
Mr. William T. Mula  
Ms. Mary Ellen Mulcahy  
Ms. Linda C. Mullenix  
Mrs. Judith L. Murphy  
Mr. Gary A. Rogaliner and Dr. Jane M.  
Nani  
National Association of Letter Carriers,  
Branch 330  
National Association of Letter Carriers,  
Branch 820 Merged  
Florrie and Ronald Nelson  
Network Solutions, Inc.  
Mr. and Mrs. Philip A. Newbold  
Nexus Group  
Mr. and Mrs. Arthur J. Niedbalski  
H. Theodore Noell Family Fund/Attorney  
and Mrs. H. Theodore Noell  
Ms. Doris A. Oakes  
Ms. Jeannine A. Oren  
Mr. and Mrs. Richard D. Otto  
Outpost Sports  
Mr. and Mrs. Meril Overmyer  
Ms. Maria Pangallo  
Ms. Mary Lee Parrish  
Ms. Janice L. Paszli  
Mr. Scott H. Peacock  
Ms. Betty Paddyord  
Professor Teresa G. Phelps  
Mr. and Mrs. Rick E. Pirtle  
Mr. and Mrs. Matthew J. Pletcher  
Ms. Bobbi Plew-Morrison  
Ms. Lynette Prezyna  
Mr. and Mrs. William F. Probst  
Dr. Vera B. Profit  
Mrs. Sherrie A. Putman  
Tom and Jacki Quigley  
Mrs. Marilyn E. Radican  
Mrs. Linda S. Rakow

Ms. Laura E. Ray  
Mr. Richard K. Reese, Jr  
Mr. Donald E. Renfro  
Mr. Larry Rice  
Ms. Bethanie Riley  
Mr. Robert W. Riordan  
Mr. Carl T. Rittberger  
Ms. Tracy Ritter  
River Park  
Mrs. Unalea Robb  
Loanna and Dick Rockstroh  
Mr. and Mrs. Charles W. Roemer  
Rollie Williams Paint Spot Inc  
Mr. Kevin J. Rollings  
Rosemary & Fred Crowe Philanthropic  
Fund  
Mr. and Mrs. James T. Ruthrauff  
Mr. Thomas M. Rutter  
Mrs. Sandra Saggars  
Ms. Nancy B. Sanders  
Mr. and Mrs. Michael J. Scherer  
Schmucker Middle School Junior Honor  
Society  
Mr. and Mrs. Oscar W. Schricker  
Mr. and Mrs. David W. Schroeder  
Mr. Chester C. Schultz  
Mr. and Mrs. Robert J. Schweikhardt  
Mr. and Mrs. Stephen A. Seall  
Mrs. Lila R. Shidler  
Mr. and Mrs. Alan L. Shoemaker  
Mr. Gary Shuder  
Shultz Insurance LLC  
Mrs. Jennelle Sloop  
Mr. and Mrs. Dennis R. Smeltzer  
Dr. and Mrs. Donald W. Smith  
Mr. and Mrs. Lyle Smith  
Mr. Daniel L. Sosnoski, Sr  
Mr. and Mrs. Stanley D. Sparazynski  
Ms. Mary A. Sproull  
Ms. Sharon Stack  
Mr. and Mrs. Robert Stahl  
Mr. Brian Stanley  
Joyce E. Staszewski  
State Employees' Community Campaign  
Sr. Joan Marie Steadman  
Mr. and Mrs. Jay E. Stebbins  
Mr. Fred Steif  
Ms. Susan C. Steinback  
Ms. Susan Stickley  
Ms. Lisa Stockberger  
Mr. Gregory L. Stockdale  
Mr. and Mrs. John D. Stouffer  
Mr. and Mrs. Richard W. Stout  
Mr. and Mrs. Thomas E. Sullivan  
Mr. Edward J. Sztanfuch

Mr. Anthony Tagliaferri  
Ms. Patricia L. Tassell  
Mr. and Mrs. Laurence R. Taylor  
Mrs. Susan S. Taylor  
Travelmore  
Ms. Mary T. Treanor  
Mr. and Mrs. Richard L. Troeger  
Mrs. Gladys J. VanDePutte  
Mr. and Mrs. Paul J. Vandewalle  
Mr. and Mrs. Robert L. Vernia  
Ms. Linda S. Wagoner  
Ms. Angela Walker  
Mr. and Mrs. Robert Wall  
Ms. Mary L. Waltz  
Patricia A. Watson  
Weas Engineering Inc  
Ms. Lisa J. Weaver  
Ms. Amy J. Weiss  
Mr. and Mrs. Edward P. Welter  
Mr. Ralph B. Westphal  
Mr. Ed Wilsberg  
Ms. Debbie Winey  
WNIT Public Television  
Mr. George W. Woolridge  
Mr. Clifton Wringer  
Mr. and Mrs. Al Yoder, Jr  
Yoder, Ainlay, Ulmer & Buckingham  
Young & Nurkowski  
Mr. and Mrs. William Zielinski

Planned Giving

Anonymous  
Estate of Gerald E Adams  
Estate of Fred Black  
Estate of Naomi B. Cordtz  
Estate of Homer Jackson Fassnacht  
Estate of Lenora M Harris  
Estate of Carolyn L. Jagodits  
Estate of Carl Steven Kasa  
Estate of Rosemary B. Kaufman  
Estate of Peggy J Millbern  
Estate of Ernan McMullin  
Estate of Rosemary D. Miholich  
Estate of Reginald and Marian Pope  
Estate of Ray M. Powell  
Estate of Shirley L. Rothe



# In Memory

The following gifts were made to the Hospice Foundation between 10/1/2012 and 1/31/2013. We are very grateful for these gifts as they enable us to fulfill our mission to improve the quality of living.

Every effort has been made to ensure the accuracy of this listing. If you wish to report an error or omission, please call our Development Office at 800.413.9083. Any corrections will be in the next issue of CROSSROADS.

**In Memory of Mary Gale Adams**  
Mr. and Mrs. Richard Fornango

**In Memory of Evelyn M. Albert**  
Julia and William Knight

**In Memory of Richard (Dick) S. Albert**  
Julia and William Knight

**In Memory of Phillip Aaron Aldrich**  
Mr. and Mrs. John Polonka

**In Memory of Betty Jean Allen**  
Mr. Charles E. Allen

**In Memory of Veronica Allen**  
Stacy L. Allen

**In Memory of Arthur Eugene Ameling**  
Elisabeth Davis and Family

**In Memory of Ruby M. Amor**  
Barb and Bill Bell  
Yvonne and Harold Lent

**In Memory of Lena C. Amsden**  
Mrs. Karalee Carlson

**In Memory of Ruth L. Andrews**  
Julie and Gregg Annis  
Mr. and Mrs. Larry Annis  
Sam L. Berger  
Diane and Marvin Houin  
Laura and Jon Langfeldt  
Mr. and Mrs. Larry Maxson  
The Arthur Miller Family  
Marilyn and Calvin Ralston  
Linda and David Rash  
Barbara and Charles Schramm  
Charlene and Stan Thomsen  
Mr. and Mrs. Mark E. Wagner  
Woodies Super Market, Inc.

**In Memory of Thomas R. Andrysiak**  
Mr. and Mrs. Kevin M. Siade

**In Memory of Betty E. Anglin**  
Mr. Lowell D. Anglin

**In Memory of Frank E. Appleton**  
Anonymous  
Lucette and Pat Higgins  
Mary Lovett  
Marsha and Bob Nafrady  
Mr. Ronald M. Wong

**In Memory of Charlene D. Arelt**  
Mr. Ed Arelt, Jr

**In Memory of Jane Ann Armentrout**  
Mr. and Mrs. Richard A. Mink

**In Memory of Thomas (Tom) F. Armstrong**  
Brooks, Stevens & Pope, P.A.

**In Memory of Rick G. Arnold**  
Carlene and John Cerngul

**In Memory of Flossie C. Badgero**  
Nancy and George Badgero

**In Memory of Robert P. Badgero**  
Nancy and George Badgero

**In Memory of Dorothy J. Bagarus**  
Kathleen Wodarczyk

**In Memory of Joel T. Bailey**  
Mr. and Mrs. Willis Hunnicutt

**In Memory of Charles (Bill) William Baker**  
Mrs. Martha A. Baker  
Connie and Daryl Ball  
Geneal and Dick Ecker  
Ricki and Joe Garrison  
Geneva Green  
Rose Ann and Steve Hall  
Bill Hartman  
Judy and Jerry Hartman  
Leah Hartman  
Jill and Tom Hartman  
Michele and Larry Holloway  
Beverly and Larry Hough  
HRP Construction, Inc.  
Mrs. Mary A. Luse  
Eric Luse and Family  
Joyce Menser  
Beth and Mark Pontius  
Brenda and Marvin Roahrig  
Joyce Roberts, Barb Roberts  
Barb and Steve Roberts  
Velma Roberts  
Wanda and Fred Shively  
Denise and Ryan Sieber  
Stackhouse Family—Kyle, Rachael, Jo, Brad  
Janet and Welcome Warren  
Bonnie and Dave Winrotte

**In Memory of Sharon M. Baker**  
Anonymous  
April Baker and Family  
Diane Baker  
Jason Baker  
Tiffany Baker  
Troy Baker

Carol and Pat  
Fran Feiser  
Andrew Gordon and Family  
Sean Gordon  
Traci Gordon  
Ms. Nancy S. Gump  
Tami and John Hoefffer  
Millie and Alan Kaser  
Mr. and Mrs. James H. Keeling  
The Merkel Family  
Amy Metz and Kiara  
Ben Poulson  
David Richer  
Toni and Matt Richer and Family  
Mr. Gary Lorin Smith

**In Memory of Lawrence Jerry Balestri**  
Mr. and Mrs. Michael E. Gray

**In Memory of Jeffery L. Ballard, Sr**  
Theresa (Terri) Ballard

**In Memory of Kathy Lee Ballge**  
Mrs. Jeanette Losee

**In Memory of Margaret Rose Balogh**  
Gregory Balogh

**In Memory of Marvin Balogh**  
Gregory Balogh

**In Memory of Joan Elizabeth Banks**  
Mrs. Mary E. Naquin

**In Memory of Juanita M. Banks**  
Rosemary and Richard Balczo  
Edwina and Ron Eberle  
Mr. Michael Engleton  
Celia Gross  
Rebecca Mason  
Barbara and Lynn Mattingly  
Helen Rymarczyk  
Ms. Mary K. Sobkowicz  
Clara Wasko

**In Memory of Marsha E. Banning**  
American Legion Post 27  
Chelsie and Tim Sharp

**In Memory of Lenda Lee Barcus**  
Anonymous  
Mr. Ed Barcus  
Evalene Barcus, Ruth Shorter  
Card Club—Quin Chaney, Lois Evans, Ann  
Houston, Peg Kring, Louise Leach, Mary  
Ann Miller, Sandy Ruff

Mr. and Mrs. Mike Davenport  
Wanda Gibson  
Raynae Hammon  
Mr. and Mrs. Louis Houston  
Mr. and Mrs. Dale Kamp  
Plymouth High School Class of 1964  
Russ  
Sadie and Bob Trump  
Mike Trump  
Sandy Wallace and John Thomas  
Mrs. Bonnie Yeazel  
Mr. and Mrs. Clifford T. Zeider

**In Memory of Edward (Joe) Joseph Barnes**  
Shirley and Charles Eaton

**In Memory of Pauline C. Barr**  
Jayne, Susan, Irma Wittenberg

**In Memory of Edward Barry**  
Laurie and John Offerle  
Linda and Dale Shurr  
Ginger Shurr

**In Memory of Bonnie Bates**  
Jane and Ed Baert

**In Memory of Mary Cecilia Battista**  
Anonymous  
Dagny Diamond  
Ms. Patricia M. Fisher  
Virginia Heller  
Katrina and Tom McGovern  
Robert Pruitt, Carol Levy  
Peggy and Bill Roach  
Alice Siminski  
Peggy and George Weber

**In Memory of Betty Bauch**  
Carol Hayes

**In Memory of Steven L. Baugher**  
The Kizer Family

**In Memory of Paul Eugene Baumgartner**  
Carole McCormick

**In Memory of Darrell H. Beach**  
Ms. Gretchen L. Anderson  
Mrs. Darlene B. Beach  
Ms. Brenda L. Beatty

Mr. and Mrs. Patrick R. Boettcher  
Mr. William G. Feighery  
Ms. Constance J. Fox

Mr. Clark G. Hartford

Indiana University South Bend, Dept of  
Chemistry and Biochemistry  
Mr. and Mrs. John F. Koellner  
Mr. and Mrs. Phillip K. Mallory  
Mr. and Mrs. Matthew G. Marmorino  
Ms. Grace W. Mutaaga

**In Memory of Norman F. Beach**  
Karyn Beach

**In Memory of Elizabeth (Betty) L. Beatty**  
Anonymous  
Linda Arch  
Karla and Terry Beatty  
Peg and Don Claeys  
Mary June and Gene Gurthet  
Sally and Larry McKee

**In Memory of John D. Beck**  
Betty Anderson  
Anonymous  
Margaret and Wes Arendt  
Shirley J. Austin  
Mrs. Grace L. Beck  
Crossroads Healing Arts  
Kate Madsen, Bill Beck

**In Memory of Dennis D. Beehler**  
Virginia Beehler

**In Memory of Viola Jayne Benjamin**  
Alice and Lenn Murdock

**In Memory of Arnold (Gene) E. Bennett**  
Edwina and Jon Kintner  
Marcia and Bob Klein  
Ginger and David Ready  
Judy and Don Ruszkowski  
Rosemary and David Spalding

**In Memory of Harold (Hal) Anthony Berger**  
Mr. and Mrs. Joseph DiGirolamo  
Ms. Karen Gustafson

Joyce Kevorkian  
Catherine Koscielski  
Joan and William Quade  
Ginger and David Ready  
Mary Schaaf  
Ruth and Walt Selle  
Timothy P. McLaughlin, PC

**In Memory of Margaret G. Berger**  
Kaye Brown

**In Memory of Mary Jane Berger**  
Lester Berger

**In Memory of Robert K. Berger**  
Mr. and Mrs. Kevin L. Berger

**In Memory of Alfred Leslie Bias**  
Kathleen and Bill Hojnacki

**In Memory of Kenneth (Ken) E. Bickel**  
Mr. and Mrs. Mark D. Borkowski

**In Memory of Mary Margaret Bickel**  
Pamela and Jeffery Bickel

**In Memory of Leona Bidlack**  
Connie and Gerry Bidlack

**In Memory of Loretta Jean Biek**  
Sharon and David Biek

**In Memory of Roy Biek**  
Sharon and David Biek

**In Memory of Larry Wayne Biggs**  
Mary J. Jackson  
Johnathan, Debbie, Reggie and David  
Ridgeway

**In Memory of Laraleen Bikowski**  
Deeanne M. Locsi

**In Memory of Clara (Clare) J. Bilinski**  
Ms. Karen M. Doughy

**In Memory of Bettie Jane Binkley**  
Laura, Suzanne and David Louthan

**In Memory of Arlene F. Birky**  
Anonymous  
Nancy and Dean Gorsuch  
Laura and Oliver Grimm  
Carol Lee, Ron Steek  
Mabel and Russell Shriner  
Wakarusa High School Class of 1951

**In Memory of Forrest Glenn Black**  
Janice K. Vernia

**In Memory of Joyce Blastick**  
Marion Zillmer

**In Memory of Carol A. Bleck**  
Jerry Bleck

**In Memory of Larry Dean Bleiler**  
Ms. Alice W. Chan

**In Memory of William C. Blue**  
Mr. and Mrs. W. S. Blue

**In Memory of Charles Boehme**  
Mrs. Mary Ellen Boehme

**In Memory of Janet (Jan) Kay Bogaert**  
Anonymous  
Patt and Rich Bennett  
Conni and Gary Berry  
Ms. Geraldine Bogaert  
Teresa and Tom Brainerd  
Sandra and Patrick Carrico  
Carolyn and Jim Chrzan  
Mr. and Mrs. John C. Cocquyt  
Charlene and Mike DeNeve  
Barbara A. Dillon

Kathy Dowling and Family  
Anne and Jason Driscoll  
Pam and Tom Driscoll  
Kathy and Denny Gadacz  
Mrs. Sara L. Harris  
Mr. and Mrs. Robert E. Hughes  
Debbie and Mark Kamm  
Mrs. Sharon Katona  
Mr. Martin J. Kerwin  
Mr. and Mrs. Leonard L. Martynowicz  
Bonnie and Don Mass  
Annette and Dick Matthews  
Helen and Tom Meyaard  
Carla Myers  
Gwen and Barney Oldfield  
Lize and Jimmy Patrick  
Gina and Bill Probst  
Kathryn and Gregory Smith  
Mrs. Rebecca Strickland  
Mr. and Mrs. Richard L. Troeger  
Mr. and Mrs. Leonard R. Vervael  
Krista Walsh  
Pamela and Dale Weaver  
Andrea and Corey Wilson

**In Memory of William (Bill) M. Bognar**  
Louis Koloszar

**In Memory of Michael S. Boits**  
Laurie and John Marson

**In Memory of Elmo E. Bolinger**  
Ms. Jennifer B. Briggs

**In Memory of Evert P. Bolinger**  
Ms. Jennifer B. Briggs

**In Memory of Lennie C. Bond**  
Lester Berger

**In Memory of Judith M. Borah**  
Dwight Handschu  
Ms. Carol J. Kendle

**In Memory of Mari Lynn Border**  
Connie and Daryl Ball  
Mrs. Joan Mabe  
Marje and Stan Walker

**In Memory of Garry Borkowski**  
Beatrice and Donald Ansbrough  
Washington Clay Class of 1950

**In Memory of Kathleen (Kathy) S. Borsare**  
Mr. Michael J. Borsare

**In Memory of Lucille Bothner**  
Mrs. Jennifer Toelle

**In Memory of Chester B. Botka**  
Pat and Tom Bolinger

**In Memory of JoAnne Bowers**  
Phyllis B. Rozanski

**In Memory of Donald (Don) J. Bowser**  
Ms. Juda Burke  
Stacy Burke  
Steve Burke  
Bill Coutts

Pam Crawford  
Geneva Green  
Jill (Reichert) and Chris Heet  
Kathy Long  
Marshall County Blueberry Festival, Inc.  
Sherrie and Phil Martin  
Mrs. Patty Nowlin  
Ms. Barbara Ogle  
Wanneta and David Reichert  
River Park  
Rita and Rance Smith

**In Memory of James (Jim) Albert Braden**  
Mrs. Carol E. Braden

**In Memory of Jessie G. Bradley**  
Mary Decker and Dan  
Ann and Loy Fishburn  
Denise and Dan Voreis

**In Memory of John G. Brettin, Sr**  
Camilla, John, Pat and Steve Brettin

**In Memory of Joyce Breveard-Butts**  
Kerri A. Breveard

**In Memory of Gertrude Manie Brittingham**  
Louise Null

**In Memory of David (Dave) R. Brookshire**  
Fern and David Gerber  
Linda Gerber Stellingwerf  
Michael Stellingwerf

**In Memory of Patricia (Pat) K. Brotherson**  
Mr. Richard W. Brotherson

**In Memory of Esther Mardell Brown**  
Dottie and Gene Hagan  
Michael Kruk

LuAnn and Mike Nate  
Mr. and Mrs. John C. Pullen  
Barb and Rich Wadzinski

**In Memory of George Harmon Brown, Jr**  
Dr. and Mrs. Alfred Cox  
Dee and Mike Dallich  
The Oliver Frye Family  
Dorothy and Max Haag  
Linda S. Kingsafer  
Georgia and Charles Mikolajczak  
Ms. Gloria L. Nyikos  
Edie and Phil Petrie  
Hattie Pitko  
Mr. David M. Rothenhoefer  
Helen Wolf

**In Memory of James W. Brown**  
Judith Brown

**In Memory of Phyllis F. Brown**  
Judith Brown

**In Memory of John C. Bruce**  
Judy Bruce

**In Memory of Patricia M. Bubelenyi**  
Dr. Gerald K. Glass

Dr. Paul B. Glass

**In Memory of Eldon D. Buell**  
Judy and Don Ruszkowski

**In Memory of Emma L. Buell**  
Judy and Don Ruszkowski

**In Memory of Antoinette Bukowski**  
Geraldine J. Bukowski

**In Memory of John Charles Bunch**  
Judy and Don Baudino  
Trevia Bope  
Bremen Elementary Middle School  
Mr. and Mrs. Mark S. Durkee  
Mrs. Georgina Fitzmaurice  
Norma and Mike Fitzmaurice  
Dwight Handschu  
Ruth P. Hess  
Diane and Marvin Houin  
Jo and Lyle LaVine  
Wilma LaVine  
Evan, Marty, Melissa and Troy Manges

**In Memory of Frances Burgess**  
Mr. and Mrs. Glenn D. Osmon

**In Memory of Wayne H. Burgoon**  
Mrs. Nadine E. Burgoon

**In Memory of Burzynski Family Members**  
Anonymous  
Ruth and Stanley Sparazynski

**In Memory of Suzanne (Suzie) Busch**  
Mr. Thomas J. Busch

**In Memory of Marjorie A. Bush**  
The Jerry Goeller Family

**In Memory of Raymond Eugene Bush, Sr**  
Mrs. Mona D. Bush

**In Memory of Grace M. Busse**  
Lorrie and Tom Bjornstad

Kika Brown  
Doris and Arnold Busse  
Renee and David Cole  
Ms. Denise Gilbert  
Brenda and Curt Konkle and Family  
Leitha and Earl O'Day  
Mr. and Mrs. Keith Rupel  
Mr. and Mrs. Michael J. Schmatz  
Rhea and Wes Spratt  
Rowena and Jim Troup  
Leigh, Alisa and Dave VanRyn

**In Memory of Ernest (Ernie) L. Butts**  
Mary Ann Butts

**In Memory of James Patrick Butler**  
Geyer Construction Co.

**In Memory of Jennifer Butchko**  
Amy S. Lotsbaich

**In Memory of Patricia A. Bykowski**  
Joseph Bykowski

**In Memory of Lyman Bybee**  
Anonymous

**In Memory of Mary Lois Byrd**  
Velma M. Chasey

Mr. and Mrs. Gary Coats  
Bonnie Robbins

**In Memory of Beverly Jean Calmus**  
Mr. and Mrs. Douglas L. Palmer

**In Memory of Steven Mitchell Calmus**  
Mr. and Mrs. Douglas L. Palmer

**In Memory of Joseph M. Campbell**  
Dee Anna and Donald Miller  
The Glenn Miller Family

**In Memory of Gaylord (Mr. G) Candler**  
Mr. and Mrs. Barry Candler

**In Memory of Betty L. Carles-Ebner**  
Mr. and Mrs. Dennis R. Correll, Sr  
Mr. and Mrs. Robert A. Frey

**In Memory of Delphine J. Carlson**  
Anonymous  
Arborwood  
Barnes & Thornburg, LLP

**In Memory of Joan L. Carlson**  
Mr. LaVerne R. Carlson

**In Memory of John H. Carlson**  
Betty Carlson

**In Memory of Shirley Carpenter**  
Ms. Lisa Mason

**In Memory of John Paul Carrico**  
Clark Edward Loneragan

**In Memory of Charles C. Carter**  
Mrs. Constance M. Carter

**In Memory of Grace Carter**  
Mrs. Nora K. Crosen  
Mrs. Patricia A. Feehly  
Connie Hogue  
Rebecca A. Kizer  
Jacqueline Love  
Donna Fonseca Roggeman  
Ken Ruppert  
Mark Ruppert  
Andrew L. Skwiercz  
Mrs. Mary Thomsen  
Amy Tribbett

**In Memory of William C. Case**  
Carol Case

**In Memory of Thomas (Tom) A. Cashen**  
Reverend and Mrs. Robert Beyer  
Peggy and Dave Herbst  
Maple Creek Middle School  
Linda and Paul Tyler  
Mr. Thomas W. Youldulis

**In Memory of Earl M. Cassells**  
Loanna and Dick Rockstroh

**In Memory of Moe Castro**  
Mrs. Cruz L. Martinez



In Memory (continued)

**In Memory of Margaret A. Cater**  
Arnold Cater

**In Memory of Robert (Bob) Chambers**  
Mrs. Nadine E. Burgoon

**In Memory of Carman M. Chaplin**  
Vicky Nix and David Klink

**In Memory of Dale Chapman**  
Mr. and Mrs. David Chapman

**In Memory of Helen Chapman**  
Mr. and Mrs. David Chapman

**In Memory of Susan T. Cholis**  
Mr. and Mrs. Tim Hertel  
Lori and Barry Vanslager  
Kerry and Mike Wallace  
Mary and Joe Woodka

**In Memory of Ted Chwalek**  
Claire and Richard Stefaniak

**In Memory of Jess D. Claudon**  
Dr. and Mrs. G. R. Green

**In Memory of Linda Sue Clauss**  
Wilma L. Hepler

**In Memory of James Maurice Claxton, Jr**  
Olga Szabo and Family

**In Memory of Marian A. Clements**  
Ms. Kay J. Nichols

**In Memory of Dieta M. Clifton**  
Elisabeth Davis and Family  
Ann Deranek  
Pat and Mike Rose  
Wahneeta Sausman Family—Linda, Dawn,  
Tom, Cindy  
Jean and Jack Taylor  
Linda S. Warner  
Marion Zillmer

**In Memory of Larry Charles Clough, Sr**  
Mrs. Mary Clough

**In Memory of Ruth Coates**  
Lorraine and John Langenhop

**In Memory of Joseph Maurice Cocquyt**  
Michele and John Hart and Family

**In Memory of Kenneth (Ken) L. Coddens**  
Mr. and Mrs. Richard William Johnson

**In Memory of Hal (Jim) Clarence Coleman, Jr**  
Tracey and Stephen Bolin  
Mr. and Mrs. David Buckley  
Jack Coleman  
Ms. Janet G. Coleman  
Sue and Jim Feece  
Mrs. Patricia A. Feehly  
The Glen James Family  
Marian McConahay

**In Memory of Elizabeth (Betty) Colt**  
Elizabeth J. and Larry D. Colt  
Linda (Colt) and Richard Kiekbusch

**In Memory of Terry M. Colt**  
Elizabeth J. and Larry D. Colt  
Linda (Colt) and Richard Kiekbusch

**In Memory of James Francis Colvin**  
Elkhart Co. Prosecuting Attorney's Office, Child  
Support Division  
Landmark Properties  
Judi Poelvoorde  
Angela and Heath Thornton

**In Memory of F. Michael Combes**  
Kelly and Rusty Haimbaugh  
Daniel, David, Kathy and Tim Jaworski  
Mike Molnar  
Tony Molnar and Cheryl  
Tammy and Chris Nyers

**In Memory of Jack Conley**  
Delores Conley

**In Memory of Leonard (Sam) Cook**  
Gerry and Eldon Reed

**In Memory of Rachel E. Cooreman**  
Marlene Lundberg

**In Memory of James Sam Copen**  
Mrs. Lena M. Copen

**In Memory of John L. Coquillard, Jr**  
Mr. and Mrs. Gary E. Moon

**In Memory of Shirley Louise Coquillard**  
Mr. and Mrs. Gary E. Moon

**In Memory of Roger R. Cornelis**  
Diane and Dennis Bailey  
Mrs. Ann M. Cornelis  
Laurie and Ken Johnson  
Phyllis and Harold Kabay  
Louis Koloszar  
L.L. Low Associates, Inc.  
Nancy and Tom Lentine  
Tommy Lentine  
Mrs. Lorraine Lips  
Judy and Kelly Low  
Mr. and Mrs. Wayne McFarland  
Gary and Kim Newman  
Phyllis B. Rozanski  
Scooter Warehouse, Inc.  
Alice Sorrels  
Ruth and Stanley Sparazynski  
Lorraine and Elmer VanDeWielle and Family  
Dommy and Earl Vosburgh

**In Memory of Ruth Barbara Cottrell**  
Somers Square East Homeowners Assoc.  
Lorraine Wisner

**In Memory of Elizabeth (Betty) J. Couch**  
Catherine Couch and Sons  
Patti Couch and Family  
Julie and Garry DeYoung  
Mary and Doug Henion  
Esther and Ed Ksiezopolski  
Bobbie and Tom LeLand  
Pat and Hugh Tomchak

**In Memory of Dorothy (Ruth) Cox**  
Mr. and Mrs. Cecil R. Ottow, Jr  
Family of Patricia and Robert D. Robertson

**In Memory of Marjorie L. Cox**  
Nancy Bannon and Children  
Mr. and Mrs. James A. Clindaniel  
Dale Davis  
Candyce Discavage  
Ruby Geyer  
Evadean Hansen and Family  
Ilah and Sam Hebner  
Janie and Fred Hipshear  
Diane and Marvin Houin  
Karen and Jere Humphrey  
Mr. and Mrs. Don Nunemaker  
Carol and Paul Nye  
Teresa Ott  
Thelma Rader  
Marilyn and Cal Ralston  
Judy and Denny Redman and Family  
Marie Redman  
Toni and Joe Ruhe  
Stacy and Michael Scheetz and Family  
Lylah and Rob Swathwood  
Christine S. Taylor

**In Memory of Katherine (Kathy) A. Coyer**  
The Carolyn Aukerman Family  
Carol and Phil Beatty  
Audra Thompson Brennan  
The Bugg Family  
Dave and Darlene Harrell and Family  
Haley, Ashley, Drew, Julie and Steve Harrell  
Cheryl and Geoff Scarberry  
Mr. and Mrs. Richard J. Seaman  
Mr. and Mrs. Robert J. Spychalski, Jr  
John and Linda Wakeland  
Diana and Hal Wilkins

**In Memory of Stella Jane Crain**  
Lorene Beaver  
Dana and Mitch Beaver  
The Erlacher Family  
Deb and John Krouse  
Bob Kyle  
Amy Max  
Mr. and Mrs. David K. Miller  
Donna Miller  
Jill and Jared Stork  
Lorrie Dee Stork  
Linda and Phil Stump

**In Memory of Robert D. Crawford**  
Ms. Lisa Mason

**In Memory of Joseph L. Cronin**  
Mr. and Mrs. Dennis M. Cronin

**In Memory of Carolyn Crook**  
Christine and Chad Miley

**In Memory of Joan Crook**  
Eugene Crook  
Janis Crook

**In Memory of Babette A. Crowe**  
Mr. Michael J. Crowe

**In Memory of Grace Marie Cunneen**  
Mr. and Mrs. Michael Cunneen  
Mrs. Susan C. Steinbach

**In Memory of Dora E. Cunningham**  
Mary Jane Preston

**In Memory of Dale Gene Curtis**  
Grace Curtis

**In Memory of Elizabeth (Betty) Curtis**  
Elfrieda Kuespert

**In Memory of Jennifer M. Dalkowski**  
Helen and Larry Bruce  
Diane and Bob Shedlock

**In Memory of Lucille O. Danielson**  
Mr. and Mrs. Robert C. Danielson

**In Memory of Walter (Walt) Murray Danielson**  
Mr. and Mrs. Robert C. Danielson

**In Memory of George F. Datena**  
Mr. and Mrs. Dave Reed

**In Memory of Patricia J. Davidson**  
Barbara Botka  
Mrs. Nora K. Crosen  
Madeline and James Gaughan  
Helen V. Johnson  
Rebecca A. Kizer  
Sylvia and Frank Parker  
Marjorie and John Schwind  
Somers Square East Homeowners Assoc.

**In Memory of Edgar Lewis Davis**  
Dorothy Allen  
Mr. and Mrs. William F. Burke  
Central High School Reunion Committee of  
1953  
Mrs. Ila M. Davis  
Elizabeth Dillman  
Billie and Dave Dunlap  
Mrs. Jeanne Everett  
Carole and Cliff Grimm  
Mr. Larry Lackner  
Ms. Carol Markel  
Millie and Lyle Osborne  
Loanna and Dick Rockstroh

**In Memory of Harvey N. Davis**  
Steve Rospopo

**In Memory of Marguerite Louise Deal**  
Bev and Ken Delinski

**In Memory of Robert (Bob) William Deal, Sr**  
Bev and Ken Delinski

**In Memory of Thomas (Tom) E. Deal**  
Bev and Ken Delinski

**In Memory of William Harvey Deal**  
Bev and Ken Delinski

**In Memory of Francis (Frank) DeBuysser**  
Nancy and Ted Niespodziany

**In Memory of Donald (Don) L. Decker**  
Colleen A. Hawkins

**In Memory of Gene Allen DeFauw**  
River Commons Homeowners Assoc.

**In Memory of Lynn R. DeFries**  
Judy A. DeFries

**In Memory of Morris DeLater**  
Judy and Ken Holderman

**In Memory of Thomas (Tom) Clifford Delker**  
Betty Dorsey  
Mary and Ron Partridge  
The Bob Watson Family

**In Memory of Veronica (Ronnie) Deluvia**  
Candy and Larry DeSimone and Family

**In Memory of Jeanne Collier Denham**  
The Denham Family

**In Memory of Jeanne Derda**  
Mr. and Mrs. William A. Welsheimer, Sr

**In Memory of Esther DeRyckere**  
Michele Fullermer

**In Memory of Joseph DeRyckere**  
Michele Fullermer

**In Memory of Judith (Judy) A. DeWinter**  
Kay and Terry Beyer  
Jane and John Callan  
Paulette and Gordon Dent  
Jim and Janie DeWinter  
Elizabeth and Ron DeWinter  
Mr. Brian Elpers  
Mr. Gerald W. Englert  
Dwight Handschu  
Chris and Bob Hillebrandt  
Sandy Jennings and David Spychalski  
Ms. Gail M. Lapkiewicz  
Sheila and Gary O'Dell  
Paula and Dan Rajski  
Brenda and Michael Sebok  
Barbara and Roger Spitaels and Family  
Becky and Pete Wajszczuk

**In Memory of Herbert (Herb) D. DeWulf**  
Mr. Ronald C. Grzeskiewicz  
Ms. Deborah Tisch  
Sheila and Denny Wood

**In Memory of Alice M. DiGirolamo**  
Jessica and Shane Stopczynski

**In Memory of Joseph F. Dillon, Sr**  
Barbara A. Dillon

**In Memory of Thomas (Tom) E. Deal**  
Bev and Ken Delinski

**In Memory of Betty J. Ditsch**  
Mr. and Mrs. William Fick

**In Memory of Clyde E. Dixon**  
Deb and Butch Breedlove  
Mr. Jerry Davis  
Dorothy and James Morris

**In Memory of Rita DuBois**  
Mary and Kevin Sexton

**In Memory of Joyce L. Dudeck**  
Mr. David Dudeck

**In Memory of Delwin (Del) Martin Dudek**  
Mr. and Mrs. Terry L. Dudek  
Wilma Dudek

**In Memory of Walter C. Dodd**  
Mr. and Mrs. Douglas M. Dodd

**In Memory of Rocco (Rocky) Dolce**  
Frances Coleman  
Patti and Mike Cowan  
Chris and Larry Foxx  
Cheryl and Robert Geisler  
Kathy and Michael Hickey  
Evelyn Hock  
Judy and Ron Longley  
Diana, Shirley, Carol, Loretta Megyesi  
Marianne Ciesielski and Steve Molenda  
Verl Murphy  
Mary Ellen and Don Peloquin  
Frances Sherwood  
Ms. Josephine A. Sherwood  
Ellen and Gene Wilkeson

**In Memory of Rolland H. Dominy**  
Gary L. Dominy

**In Memory of Willella (Willie) J. Dominy**  
Gary L. Dominy

**In Memory of Janet Donegan**  
Mr. and Mrs. Dale E. Swafford

**In Memory of William Doty**  
Ms. Elinor M. Sharp

**In Memory of Josephine Loretta Dregits**  
Colleen Kubacki

**In Memory of Jeanette Marie Dryden**  
Susan and Bill Bolton  
Bonnie Chadderdon  
Gail Colman  
Ms. Marilyn R. Fisher  
Cheri and Bob Gowin  
Rita and John Gustafson  
Patricia Hallendy  
Mr. and Mrs. Ivan Hancox  
Jenni and Tim Hughes  
Ms. Nancy Krantz  
The Krantz, Stuckey, and Koehler Families  
Arlene and Ric Ladonski  
Megan and Chad Luce  
Mr. and Mrs. Ronald E. McCauley  
Jan and Don Padgett  
Deanna and Gary Schmidt  
Jill and Glen Shoop

**In Memory of Carol N. Drzewiecki**  
Ms. Cheryl L. Warner

**In Memory of James E. DuBois**  
Dolores J. DuBois  
Mr. and Mrs. Jeffrey A. DuBois

**In Memory of Joan A. Ellinger**  
Michiana Contracting, Inc.

**In Memory of Dorothy D. Ellis**  
Judy and Don Ruszkowski

**In Memory of Terry Lee Ellsworth**  
Ms. Sandra Ellsworth  
Kathy and Phil Plaia  
Doris Thompson

**In Memory of Kathryn J. Emenaker**  
Ms. Betty Baker

**In Memory of Walter Dudka**  
Martha ( Betty ) Haines  
Janina Krengel  
Rich Overholser  
Mrs. Wanda Zmyslo

**In Memory of Alex M. Dukai**  
Mr. and Mrs. Corey E. Dukai

**In Memory of Lewis I. Duncan, Jr**  
Marguerite Duncan

**In Memory of Goldy Durben**  
Shelly Martin

**In Memory of Jack N. Durben**  
Mr. and Mrs. Gordon L. Hostettler  
Mr. and Mrs. Michael Kolo  
Renata Moyer  
Ontwa Township Office and Trustees  
Roger Robison  
Mary and Gary Snyder  
Bonnie and Fred Walker

**In Memory of Bruce L. Durham**  
Ms. Helen A. Durham

**In Memory of Michael (Mike) J. Dworecki**  
Wilma Aitchison  
Ms. Jane Carlson  
Terry and James Cinal  
Cathy and Doug Hall and Family  
Mr. and Mrs. Michael E. Heberling  
Mary Ann Hoffman  
Judy Hums  
Mr. and Mrs. Eugene R. Palkowski  
Riley High School  
Tara and Fred Snyder  
Mr. Jerry L. Starrett  
Mr. William D. Stopczynski  
Bob Stutzman

**In Memory of Alice H. Dygulski**  
American Legion Auxiliary Post 357  
Mr. and Mrs. Lawrence E. Dygulski  
Ann Marie Kruk  
Ms. Gail M. Pluta  
Mr. and Mrs. Edward W. Sera  
Mr. and Mrs. Gregory P. Vanderheyden

**In Memory of Dorothy V. Eby**  
Cook Family Reunion  
HRP Construction, Inc.  
Mr. and Mrs. Herman D. Miller

**In Memory of Bernice (Millie) M. Edwards**  
South Bend Medical Foundation

**In Memory of Joan A. Ellinger**  
Michiana Contracting, Inc.

**In Memory of Dorothy D. Ellis**  
Judy and Don Ruszkowski

**In Memory of Terry Lee Ellsworth**  
Ms. Sandra Ellsworth  
Kathy and Phil Plaia  
Doris Thompson

**In Memory of Kathryn J. Emenaker**  
Ms. Betty Baker

**In Memory of Dorothy (Dianne) D. Emerson**  
Sue and Gerry Phelps

**In Memory of Francis (Frank) M. Erdelyi**  
Mrs. Linda A. Erdelyi

**In Memory of Family and Friends**  
Mr. and Mrs. Charles Prue

**In Memory of Julius (Danny) N. Farkas**  
Kendall Ellingson  
Mr. Daniel P. Farkas

**In Memory of Max Robert Faulkner**  
Mr. and Mrs. David Becknell

**In Memory of Jeffery E. Feathers**  
Mr. Curt A. Feathers  
Mr. Gregory P. Feathers  
Mr. John Feathers  
Ms. Tammy Stepp  
Mr. Charles F. Vogel  
Ms. Emily J. Vogel

**In Memory of James (Jim) John Feehly**  
Andrew L. Skwiercz

**In Memory of Lisa Cecelia Fell**  
Dolores and Carl Bates

**In Memory of Marguerite Louise Felten**  
Lester Berger

**In Memory of Phyllis Jean Fielder**  
Susan Howard  
Susan and Manuel Silva

**In Memory of Richard (Dick) Charles Fields**  
Mrs. Helen L. Fields

**In Memory of Joan M. Finley**  
Dr. and Mrs. James E. Wack

**In Memory of John E. Finneran**  
Mr. Jim R. Finneran

**In Memory of Frank (Fritz) J. Firtl**  
Carol and Mike Barcza  
The George Bernath Children  
Santana, Amy and Andy Bozman  
Mary Jane Buzolich  
Jayne and John Dregits  
Mr. and Mrs. Raymond Ganser  
Lois and David Garipey  
HRP Construction, Inc.  
Fran and Ken Leedy  
Pat DeRue Nemeth and Don Nemeth  
Judith and Thomas Wells

**In Memory of Joseph Fischer**  
Carol and Steve Suth

**In Memory of Joseph R. Fitt**  
Mrs. Joan E. Fitt

**In Memory of Jody Fogarty**  
Mr. and Mrs. Kenith D. Hansen

**In Memory of Arthur John Folk**  
Julie Harris

**In Memory of Joyce Ann Fortson**  
Dorothy and Clem Degucz

**In Memory of Forest (Buster) Verne Fox, Jr**  
Roadway Express Retirees

**In Memory of Dale K. Foza**  
David A. Reinhold

**In Memory of Samuel L. Fraser**  
Mr. William C. Shaffer

**In Memory of Betty P. Freese**  
Anonymous  
Mary J. Clark  
Ms. Phyllis J. Hessler  
Ms. Margery A. Howard  
Barb Johnson  
Cathi Mills and Family  
Kiyoko Muffley  
Betty and Jim Nolin  
Northern Equipment Co., Inc.  
Roger and Tammy Osborn  
Billie and Marvin Schrock  
Diana and Hal Wilkins  
Jane and Mike Woolfington

**In Memory of Patricia Frontczak**  
Mr. and Mrs. David Chapman

**In Memory of Mary Alice Fry**  
The Arthur Fry Family  
The Oliver Frye Family  
The Emma Hazlett Family

**In Memory of Maxine Frye**  
The Arthur Fry Family  
The Oliver Frye Family  
The Emma Hazlett Family

**In Memory of Wanda C. Fujawa**  
Marcia and Ron DeLee  
Geraldine Jakubowicz  
Linda (Galezewski) and Alan Selner  
Mary Ann and Lonnie Whitlock  
Patty Wolf

**In Memory of Paul W. Futa, Sr**  
Kathy and Paul Futa

**In Memory of Chester L. Gadacz**  
Claire and Richard Stefaniak

**In Memory of Gerald (Jerry) William Gagnon**  
Yvonne Gagnon

**In Memory of Mary Ann Galvas**  
Mr. and Mrs. Dennis Artusi

**In Memory of Kate Gamble**  
Mr. and Mrs. Larry A. Shoemaker

**In Memory of Jimmie (Jim) Wayne Gangloff**  
Mrs. Ruby M. Gangloff

**In Memory of Wladyslawa (Gladys) Ganser**  
Albert J. Brasseur Harbor Springs Financial  
Mgmt  
Dennis G. Bassi  
Laura J. Bassi  
Nicholas G. Bassi  
Erin Davis

**In Memory of Joseph G. Ganus**  
Mr. and Mrs. Dennis Janowiak

**In Memory of John H. Garber**  
Mrs. Janet L. Garber

**In Memory of Raymond F. Garcia**  
Lori and Chuck Kelly

**In Memory of Clara A. Gardini**  
Gary Gardini

**In Memory of Jeanne Elizabeth Gardner**  
Dr. and Mrs. Stephen L. Anderson

**In Memory of Jeanne Elizabeth Gardner**  
Catherine and Thomas Borneman  
Mr. Gary A. Chadaranek  
Ms. Heidi A. Connors  
Madeline Deyerling  
Kay and Roy Eligass  
Mr. Gregory Gardner  
Laurel and Stephen Gardner  
Mr. and Mrs. Jim Greve  
Jeanne and Bill Klem and Family  
Cheryl and Jeff Kruk  
Sportsmans Lodge  
Father Robert VanKempen  
Mr. Christopher J. Wadas  
Dorothy Wilson  
Mr. and Mrs. Cliff Witkowski

**In Memory of John D. Gardner**  
Ms. Victoria J. Bunn  
Frances A. Myers  
Oak Grove Baptist Church  
Ms. Sherrie A. West

**In Memory of Susan (Sue) J. Gardner**  
Anonymous  
Marce Brand  
Kelly Carson  
Mr. and Mrs. Terry Garber  
Mr. and Mrs. LeRoy E. Harshberger  
Mr. and Mrs. John K. Hershberger  
Ms. Marguerite M. Kelly  
Ms. Carolyn Leichty  
Ann Lempke and Family  
Marilyn and John Nymeyer  
Donna and Jesse Rex and Family  
Mr. and Mrs. Jack Riley  
Virgil Sauder  
Alice and Ron Schmidt  
Ms. Elaine L. Sheets  
Ms. Mary Jo Short  
Mr. Joseph A. Springer  
Ms. Shariene Walerius  
Jennifer Williams

**In Memory of Joseph G. Ganus**  
Mr. and Mrs. Dennis Janowiak

**In Memory of John H. Garber**  
Mrs. Janet L. Garber

**In Memory of Raymond F. Garcia**  
Lori and Chuck Kelly

**In Memory of Clara A. Gardini**  
Gary Gardini

**In Memory of Jeanne Elizabeth Gardner**  
Dr. and Mrs. Stephen L. Anderson

**In Memory of Jeanne Elizabeth Gardner**  
Catherine and Thomas Borneman  
Mr. Gary A. Chadaranek  
Ms. Heidi A. Connors  
Madeline Deyerling  
Kay and Roy Eligass  
Mr. Gregory Gardner  
Laurel and Stephen Gardner  
Mr. and Mrs. Jim Greve  
Jeanne and Bill Klem and Family  
Cheryl and Jeff Kruk  
Sportsmans Lodge  
Father Robert VanKempen  
Mr. Christopher J. Wadas  
Dorothy Wilson  
Mr. and Mrs. Cliff Witkowski

**In Memory of John D. Gardner**  
Ms. Victoria J. Bunn  
Frances A. Myers  
Oak Grove Baptist Church  
Ms. Sherrie A. West

**In Memory of Susan (Sue) J. Gardner**  
Anonymous  
Marce Brand  
Kelly Carson  
Mr. and Mrs. Terry Garber  
Mr. and Mrs. LeRoy E. Harshberger  
Mr. and Mrs. John K. Hershberger  
Ms. Marguerite M. Kelly  
Ms. Carolyn Leichty  
Ann Lempke and Family  
Marilyn and John Nymeyer  
Donna and Jesse Rex and Family  
Mr. and Mrs. Jack Riley  
Virgil Sauder  
Alice and Ron Schmidt  
Ms. Elaine L. Sheets  
Ms. Mary Jo Short  
Mr. Joseph A. Springer  
Ms. Shariene Walerius  
Jennifer Williams



In Memory (continued)

**In Memory of Millie Garwood**  
Lori and Dale Garwood

**In Memory of Samuel J. Gasper**  
Mrs. Jean Gasper

**In Memory of James (Jay) Gearhart**  
Gloria and Fred Tansey

**In Memory of Maryanne Gearhart**  
Gloria and Fred Tansey

**In Memory of Dennis Randall Gentry**  
Jessica and Shane Stopczynski

**In Memory of Rejeana Gerbeth**  
Mr. and Mrs. William Gerbeth

**In Memory of Loren Roger Geyer**  
Geyer Construction Co.

**In Memory of Zilpha Helen Giltner**  
Mr. and Mrs. John Dack

Donna and David Freeman  
Mr. and Mrs. Don Fuller  
Mrs. Sophie Gaddey  
Mr. and Mrs. George G. Giltner  
Mr. and Mrs. George N. Giltner  
Pat Tassell  
Mr. and Mrs. Laverne Ward  
Mary Lou Wood

**In Memory of Evelyn (Evie) M. Giska**  
Mr. and Mrs. Philip P. Hadamik

**In Memory of Robert (Bobby) A. Gnoth**  
Jean and Richard Baer  
Pauline and Craig Beutel  
Mary Ann and Jerry Cavanah  
Mr. and Mrs. Tim Champion  
Sandy and Nick DeCicco  
Bonnie and Bob DeCola  
Pam and Vic DeCola  
Elizabeth and Ron DeWinter  
Mr. and Mrs. David Diroll  
Ms. Marie M. Ditrlich  
Marcia Eakins  
Barbara and Craig Ethier  
Pamela Fetherston  
Five Star Sheets, LLC  
Yvonne A. Foss  
Elizabeth, Greg and Pat Gilmore  
Nancy and Dick Grant  
Chris and Chris Gregory  
LeAnn and Dan Gregory  
Becky and Dave Hamann  
Michele and John Hart and Family  
Helen L. Hibbs  
Judy Hums  
Mr. David C. Johnson  
Mr. and Mrs. Thomas Keller and Family  
Nancy and John King  
Mr. and Mrs. Kevin G. Kruggel  
Kruggel, Lawton & Company  
The Lebermuth Company, Inc.  
Jill Lester  
David Montgomery  
Cindy and Dick Montgomery

Dr. and Mrs. Jeffrey L. Niespodziany  
Char and Jeff Polanskey  
Mr. and Mrs. Kenneth C. Ricci  
Georgie Schroeder  
Mrs. Teresa Simon  
Eileen Sniadecki  
Lisa Stockberger  
Mr. and Mrs. William G. Stockberger  
Betty Ann Toth  
Mr. and Mrs. Val P. Trinkley  
Ms. Joane Wachs  
Byra Warner, Gary, Jared and Aaron Horvath  
Young & Nurkowski  
Mr. Daniel L. Young

**In Memory of Lewis Gochenour**  
Mrs. Marilyn Gochenour

**In Memory of Loren L. Gochenour**  
Mrs. Marilyn Gochenour

**In Memory of Martha Gochenour**  
Mrs. Marilyn Gochenour

**In Memory of Angeline R. Goeller**  
The Jerry Goeller Family

**In Memory of Robert (Bob) P. Goetz**  
Mr. and Mrs. Brent E. Jagla  
Eileen Sniadecki

**In Memory of Charles H. Goss**  
Anne and Cary Goss

**In Memory of Michael (Mike) Paul Goss**  
Amy and Max Baim

**In Memory of Marilyn J. Gostola**  
Janice and David Akin  
Sue Angelos  
Bad Boy, Inc.  
Cindee and Geoff Bethay  
D & D Custom Concrete Contractors, Inc.  
Brenda and Marty Deardorff  
Marie and Carl Giefing  
Mr. and Mrs. Carl J. Gostola, Jr  
Helen Gostola  
Linda and Bud Lies  
Jordan and Gregg Lies  
Sue and John Lies  
Mr. and Mrs. Paul Lies  
Terri and Larry Lies  
Dorothy and Bud Matthys  
Rosemary Mochel  
Ruth and Paul Moor  
Annie M. Priestler  
Saint Joseph County Soil and Water  
Conservation District, Board Members  
and Staff  
Marilyn and David Spenner  
Laura and Randy Vogel  
Mr. and Mrs. Ronald G. Whitesel

**In Memory of Hilton (Hilly) LaForce Gramps**  
Adelaide Gramps

**In Memory of Richard A. Grant**  
Ms. Judy L. Gruener  
National Assoc. of Letter Carriers,  
Branch 330  
A. E. Quigley

**In Memory of Ona Grauaug**  
Mrs. Norma Beitler  
Robert E. Dunbar, Sr  
Pat and Dave Karpinski  
Homer S. Kovacs  
Mr. and Mrs. Eric Schildbach  
Lois and Richard Widmar

**In Memory of Robert (Bob) William Green**  
Debbie, Mitzie and Howard Schrage  
Dee and Sonny Tepe

**In Memory of Earl Greenwell**  
Mr. Kenneth Eckstein  
Mr. Steven W. Greenwell

**In Memory of John Grembowicz, Sr**  
Mrs. Mary Ann Grembowicz

**In Memory of Kimberly J. Griman**  
Anonymous  
Concord Electric, Inc.  
Sue Freitag  
Sondi and John Geminder  
Debbie, Tim, Carole and Sam Kovacevich  
Barbara Kubiak and Barry Schleiger  
Mr. and Mrs. David D. Shufelt  
Frank Thomas  
Gary Toland

**In Memory of William (Bill) L. Grisley**  
Susan and Jack Marsh

**In Memory of Henry S. Gromski**  
Mr. and Mrs. Joe Gorny  
Carol Gromski

**In Memory of Julia M. Grove**  
Lucy Bontrager  
Virginia and Keith Gingerich  
Sandy and Kenny Lingofelter  
Lauria Weber  
Mr. and Mrs. James D. Yoder

**In Memory of Charles (Charlie) Lewis Gruner**  
Mr. and Mrs. Mark W. Leblang

**In Memory of Reinhold O. Gunderman**  
Joyce and Jim Gaugler  
Trish and Jeff Gaugler  
Louise Null  
Ron Olson  
Jane Roth  
Tammy Waller  
Rosemary Williams Family

**In Memory of Ralph W. Gushwa**  
Mr. and Mrs. Ken Riffel

**In Memory of Arthur (Art) L. Guzowski**  
Beryl Guzowski

**In Memory of Kim S. Guzowski**  
Beryl Guzowski

**In Memory of Sarah E. Haas**  
Gabrielle Poikus

**In Memory of Lewis (Bud) S. Haber**  
Roger Baele  
Joan Busch  
Stephen C. Foster  
Norma Lu Meehan  
James Wensits

**In Memory of Dee Hakanen**  
Ms. Judith E. Kukla

**In Memory of Carolyn O. Halasz**  
Barb and Bill Carlson  
Young Adult Program, Friends  
and Co-Workers

**In Memory of Julius A. Halasz**  
Jacqueline Badics  
Mr. and Mrs. Phinehas P. Barnes, Jr  
Micki and Walter Benninghoff  
Barbara and John Black  
Barb and Bill Carlson  
Mrs. Suzanne M. Christensen  
Annette Deguch

Mr. and Mrs. John S. Egyhazi  
Mr. and Mrs. William H. Frame  
The Groth Family  
The Hasse Family  
Mr. and Mrs. William R. Lamie  
Neighbors on Gee Court and Sandybrook Dr  
Mr. and Mrs. Joseph G. Nucciarone  
Debra Shively  
Mrs. Justine M. Soboleski  
Mark and Suzanne Wiwi  
Young Adult Program, Friends  
and Co-Workers

**In Memory of Carolyn Hall**  
Angela C. Whitmer

**In Memory of Marilyn J. Hall**  
Kay Hall and Diane Hall

**In Memory of Larry Eugene Hamilton**  
Doris Brewer  
Sharon and Tom Daus  
Ms. Marie Foster  
Nyloncraft Employees—Rita Alshamary, Penny  
Baer, Linda Ballard, Cindy Bennett, Donna  
Buwa, Karen Clark, Debbie DeWitt, Vickie  
Draper, Kris Eger, Jerry Enders, Annette  
Fabiano, Robin Gates, Barbara Geiselman,  
Sommali Getmanee, LuAnn Jasinski, Helen  
Martin, Jim Maurer, Mary McEndarfer,  
Ron Mesaros, Linda Miller, Kay Mroz, Jon  
Norton, MariClare Osborn, Penny Penrod,  
Bob Piper, Helen Raymond, Doris Rich,  
Barbara Robards, Wendy Schmalkuche,  
Muhammad Shabazz, Karl Smiley, Linda  
Soper, Median Spahic, Judy Stewart, Gary  
Taylor, Lori White, Betty Woody

Ms. Lamar Owens  
Shirley and Vernon Owens

**In Memory of Ruby L. Hancock**  
Anonymous  
Constance Bartoszewicz

Sandra Brody and Family  
Susan Gorsett  
Mr. and Mrs. Donald E. Horvath  
Sue Kobek  
Beverly Lincoln and Phyllis Windsor  
University of Notre Dame  
Sharon and Glen Wiseman  
Joann Wiseman

**In Memory of Deloris (Dee) E. Handschu**  
Reverend and Mrs. Robert Beyerle  
Marcia Cramer  
Dwight Handschu  
Carolyn and John Hensler  
Margaret F. Huff  
Marcy and Alan Mangus  
Sheila and Gary Neice  
Ms. Evelyn Penrod  
Mr. Joseph Porowski  
Susan and John Ribley  
Virginia and Herbert Schwepler  
Judy and Jeff Springer  
Isabel Stickley  
Debbie and Dan Turner

**In Memory of Joseph Hans**  
Diana Hans

**In Memory of Thelma G. Hans**  
Diana Hans

**In Memory of Clara Elizabeth Hansen**  
Gale Craft  
Diane and Jim Day  
Martha and Dick Day  
Sharon and J.D. Dorman  
Ms. Elaine L. Hansen  
Maxinkuckee Rebekah Lodge #844  
Charlene and Michael Miller  
VFW Finney-Shilling Post 6919,  
Ladies Auxiliary

**In Memory of Mary Virginia Hanson**  
Ms. Mary T. Treanor

**In Memory of Stanley F. Harmacinski**  
Kim and Randy Kalman  
Elaine Laux

**In Memory of Letha Harman**  
Mr. Millard Harman, Jr

**In Memory of Susan Harper**  
Mr. Steven Harper  
Pat Jeffers  
Becky and Jerold Rackel

**In Memory of Richard (Dick) Maurice Harrell**  
Clark Edward Lonergan

**In Memory of Glenna Jessica Harter**  
Mr. and Mrs. Larry A. Gattlin

**In Memory of Clarence (Dan) Daniel Hartnell, II**  
Tom Frederick  
Cheri and Al Pesce  
Mr. John H. Shafer

**In Memory of Roger Allen Hartzler**  
Anita Fretz

**In Memory of Lloyd J. Havens**  
Ms. Sally McNulty  
Sue and Sam Perri  
Mr. and Mrs. James C. Vonachen

**In Memory of Patricia Havens**  
Mr. and Mrs. Bobby H. Jeffcoat

**In Memory of Arlene Hayden**  
Connie and Gerry Bidlack  
Robert Gardner  
Elaine M. Gulas

**In Memory of James E. Hedger, Sr**  
GSSC, Inc.

**In Memory of Robert Heede**  
Mr. and Mrs. Gregory S. Cress

**In Memory of Ardith (Art) G. Heller**  
Susan Keller

**In Memory of Courtney Theresa Henry**  
The Auditor's Office, Robin Townsend

**In Memory of Willard (Bill) Hepler**  
Helen E. Smogor

**In Memory of Nancy C. Herkenroder**  
Denny Weesner

**In Memory of Dora L. Herman**  
Kathy and Joe Cornelis  
Joann and Don Sporleder

**In Memory of Ruth I. Herring**  
Mr. David L. Herring

**In Memory of Henry (Hank) D. Hesch**  
Shirley and George Engelhardt  
Sara Felabom  
Pat and Art Harker  
Doris and Dale Hesch  
Mary and Harold Hesch  
Larry Hesch  
Mr. and Mrs. Joseph J. Kerbleski  
The Elnora Leininger Family  
Dottie and Tom Lesniak

**In Memory of Laverna Hortense Hesch**  
Shirley and George Engelhardt  
Pat and Art Harker  
The Elnora Leininger Family

**In Memory of Rebecca (Becky) L. Hill**  
Mrs. Diana Zornow  
Ms. Jan C. Sefton

**In Memory of Leatha Janis Hoffner**  
Ruth Ann and Donald Anthony  
Doris and Gus Brenner  
Jane and Steve Burton

**In Memory of Douglas James Hogberg**  
Maren Hogberg

**In Memory of Janice (Jan) D. Holdeman**  
Anonymous  
JoAnn and Phil Barnes  
Betty and Lawrence  
Mary and Elmer Blanton  
Karen L. Cowles

Connie and Bob Cramer  
Sally Davis  
Bonnie and Ron Dennison  
Susan Elliott  
Grace and Steve Flowers  
Verlin Hayes, Kenneth and Ringo  
Connie S. Howard  
Deb and Terry Kane  
Karen and Kim Scherer

**In Memory of Freida C. Holland**  
Cathy and Charles Staley

**In Memory of James (Tom) T. Holland**  
W. Celeste Holland

**In Memory of Marian L. Hollister**  
Carol and Craig Rothe  
Mr. L. Jack Rothe  
Fred Ulbricht

**In Memory of Ingrid Helen Holm**  
Mr. and Mrs. Earl R. Strang

**In Memory of Merlin R. Holycross**  
Roberta and Bob Arbuckle  
Judy Ashley and Rudy Gouridine  
Bonnie and Dev Ballenger

Keith Cook  
Patc Dunning  
Shelby Farmer  
Susan and Gregg Holycross  
Christina Isaacs  
Betty and Raymond McCuddy  
Edie and Mike Plummer  
Marcia and Dale Powers  
April and John Schultz  
Ms. Mary E. Simper  
Betty Swinehart  
Mary and Tom Williams

**In Memory of Marcia Louise Hopper**  
Mrs. Norma Bennett

**In Memory of Anna (Ann) L. Horning**  
Sharon and Don Carothers  
Kacey and Doug Carothers  
Mr. Richard Carothers  
Mr. William D. Carothers  
Ms. Delores DeGulier  
Mary Alice and John Hess  
Karren and Tim Kenna  
Candice and Craig Salyer  
Susan and Mel Wood

**In Memory of Irving B. Hoskins**  
Mr. and Mrs. John J. Lorber

**In Memory of Rossi Hoskins**  
Mr. and Mrs. John J. Lorber

**In Memory of Helen Houghtby**  
Mrs. Sandra K. Badur

**In Memory of Earl Lee Houin**  
Mrs. Susan Houin

**In Memory of Patrick J. Houk**  
Mr. and Mrs. James E. Houk

**In Memory of Bruce K. Hudson**  
Beverly and Ken Cinal  
Mr. and Mrs. Patrick R. Cripe  
DLZ Corporation  
Gail and Steve Flowers  
Mr. and Mrs. Gordon H. Norquist, Jr  
Mr. and Mrs. Raymond E. Schmitt  
Ms. Sherlannie Slepcevic  
Mr. and Mrs. Andrew C. Smith  
Carin and Harvey Weingarten

**In Memory of Louis Huff**  
Janice and DeWayne Creighton

**In Memory of Emma Hughes**  
Mr. and Mrs. Charles F. Keller

**In Memory of Lester A. Hughes**  
Mr. and Mrs. Charles F. Keller

**In Memory of Joan Huguenard**  
Mr. and Mrs. Henry W. Adams

**In Memory of Paula J. Huhnke**  
Lana and Adrian Mark

**In Memory of Chester (Chet) L. Hunter**  
Candy Jurgenson

**In Memory of Ronald H. Hurley**  
Mrs. Mary S. Hurley

**In Memory of Timothy P. Hurley**  
Wanda Garrett Hurley  
Mrs. Anita M. Prater

**In Memory of Carmy L. Hurtle**  
Nancy Hurtle

**In Memory of James Hushower**  
Mary Jane Preston

**In Memory of Virginia Hutti**  
Ms. Karen Kehr

**In Memory of Judith Lynn Hyder**  
Mary and Jim Swartz

**In Memory of Casimer Hyduk**  
Mrs. Frances A. Hyduk  
Mr. and Mrs. Greg A. Hyduk

**In Memory of Paul Hyduk**  
Mrs. Frances A. Hyduk  
Mr. and Mrs. Greg A. Hyduk

**In Memory of Danica Idukovich**  
Stephanie Pasman  
Mrs. Betty Wensits

**In Memory of Lucille Irene Ives**  
Mr. and Mrs. Edward Krill

**In Memory of Phyllis L. Jacks**  
Eloise C. Mishler

**In Memory of Woodrow (Woody) W. Jacobs**  
Mrs. Anna Mae Jacobs

**In Memory of Donald H. Jacobson**  
Byra Warner  
Gary, Jared and Aaron Horvath

**In Memory of Edward J. Jagla**  
Mr. and Mrs. Brent E. Jagla

**In Memory of George C. Janczycki**  
Jane and Ed Baert  
Vicki and Bill Bunn  
Geraldine Jakubowicz  
Mr. and Mrs. Joseph B. Jakubowicz, Jr  
Sophie Kinney  
Johanna Meersman and Family  
Janine and Kevin Meersman

**In Memory of Constance (Connie) G. Jankowski**  
1950 Classmates of Greene Township School  
Dory Goldberg  
Evelyn Hock  
Marsha and Dana Kaufman  
Mrs. Holly Keller  
Mr. and Mrs. Bernard M. Kuczka  
Ginny and Ed Lewiecki  
Tawni and David Maenhout  
The Noel Maenhout, Jr. Family  
Joyce and Pat Monhaut  
Jessie Napolitano  
National Center for Science and Engineering -  
Friends and Colleagues of John Jankowski

**In Memory of Constance (Connie) G. Jankowski**  
Ms. Nancy L. Neitch  
Mr. and Mrs. Walter Stefaniak  
Sheri and Raymond Wolfe  
Mr. and Mrs. William G. Woods

**In Memory of Louise E. Janowiak**  
Claire and Richard Stefaniak

**In Memory of Richard C. Janowiak**  
Claire and Richard Stefaniak

**In Memory of Lucille (Dorothy) Jelinski**  
Mr. and Mrs. David M. Jelinski

**In Memory of Richard V. Jelinski**  
Mr. and Mrs. David M. Jelinski

**In Memory of Thomas L. Jentz**  
Rosann and Fred McGuire

**In Memory of Donald E. Jernstrom**  
Mrs. Bonnie Jernstrom

**In Memory of Larry A. Jester**  
Susan Hall

**In Memory of Robert A. Joachim, Jr**  
Mr. and Mrs. Larry J. Hauguel, Sr

**In Memory of David Alan Johnson**  
Janet and John Messman

**In Memory of Ingwald W. Johnson**  
Ronald Nifong

**In Memory of Joan Johnson**  
Vicki and Tom Bria  
Charlotte and Donald DeVito  
Ms. Joan Pellegrino  
Barbara A. Kubiak and Barry L. Schleiger  
Carolyn and Steve Sherry  
Peter and Rebecca Siciliano

**In Memory of Kate Johnson**  
Mr. William D. Johnson

**In Memory of Kerry G. Johnson**  
Mr. and Mrs. Gregory L. Cripe  
Lois and Charles Hunter  
Robert Miller  
Charles A. Perry and Company  
Mr. and Mrs. Eugene C. Williamson

**In Memory of Loah Jean Johnson**  
Mr. James Brazeau

**In Memory of Geraldine (Jeri) Alice Jolliff**  
Mr. and Mrs. H. S. Henderson  
Ms. Mary Stanfield

**In Memory of Charles E. Jones**  
Mary H. Jones

**In Memory of Rebecca K. Jones**  
Mr. T. Steven Jones

**In Memory of Mark W. Judd**  
Mr. Robert W. Judd

**In Memory of Jack L. Julian**  
Dr. and Mrs. James Adamitis and Family  
Diana and Ron Budzielek  
Mr. and Mrs. David L. Jackson  
Mr. and Mrs. Douglas R. Marler  
Richard L. Mayer  
The John Robinson Family

**In Memory of William (Bill) John Julies**  
Marilyn Housemeyer  
Marie Mengel  
Betty Niedbalski  
Cathy Panis  
Phyllis Rozanski  
Margie Zmudzinski

**In Memory of R. Eleanor Justus**  
Kathryn L. Hiatt  
Donna Marsinko  
Maria and Dave Schmit

**In Memory of Ann M. Kagel**  
Mr. John R. Kagel, Jr

**In Memory of John Kagel**  
Mr. John R. Kagel, Jr

**In Memory of Almena Romaine Kaley**  
Mr. and Mrs. Roy E. Clark  
Mr. Donald E. Demers  
Hill Truck Sales, Inc.  
Mrs. Donna M. Jackson  
Mr. Dale Newland

**In Memory of Sondre J. Kamp**  
Mr. and Mrs. Donald G. Anders  
Argos Volunteer Fire Dept.  
Darlene and Bob Brown  
Mr. and Mrs. Paul L. Harrell  
Ms. Mary M. Jackson  
Ethan, Doreen and Doug Masterson  
Jeff Masterson  
Melinda and Mike Shook  
Deb and Mike Shoptaw

**In Memory of Clifford W. Kampe**  
Mr. and Mrs. Norman Kampe



*In Memory (continued)*

**In Memory of Alice Karczewski**

Jackie Czarnecki  
Mary and Marie Czarnecki  
Mr. and Mrs. Thomas A. Delater  
Mr. and Mrs. Dennis Janowiak  
Mr. and Mrs. Vernon L. Shepherd

**In Memory of Carl Steven Kasa**

Mr. and Mrs. Robert Carrico

**In Memory of L. (Betty) Elizabeth Kasa**

Mr. and Mrs. Robert Carrico

**In Memory of Morris (Morrie) J. Katz**

Corky and Erv Karlin

**In Memory of Carlyle Kavadas**

Dr. William and Nancy Kavadas Shephard

**In Memory of Bert J. Kazmierczak**

James A. Kazmierczak

**In Memory of Sophie L. Kazmierczak**

James A. Kazmierczak

**In Memory of Thomas (T.C.) Kazmierczak**

Barbara E. Matuszak and Terry Wozniak  
In Memory of Audrey Lillian Kebschull  
Karen and Kevin Bailey  
Ms. Marilyn Klann  
Mr. and Mrs. William O. Kruggel  
Veryl Pagels  
Pat Valenti

**In Memory of Katherine Keller**

Mr. and Mrs. Charles F. Keller

**In Memory of Barbara K. Kelly**

Mr. and Mrs. James E. Parmley

**In Memory of Dorothy Anne Kelly**

Lori and Chuck Kelly

**In Mmory of Joe Kelly, Jr**

Lori and Chuck Kelly

**In Memory of Carl H. Kerby**

Anonymous

**In Memory of Jenny Fern Kerchaert**

Saundra A. Ochs

**In Memory of Michael C. Kestner**

Mr. Joseph S. Panzica

**In Memory of Lillie Mae Kile**

Anonymous  
Karen and Bernard Bradley  
Mr. and Mrs. Larry D. Davis  
Marilyn Hamel  
Brenda and Steve Harper  
Marshall County Church of Christ

**In Memory of Daniel L. Kilgas**

Marilyn and Gary Derbin  
Patti Ganser

**In Memory of Elmer Kilmer**

Mr. and Mrs. Gary D. Kilmer

**In Memory of Leona K. Kilmer**

Mr. and Mrs. Gary D. Kilmer

**In Memory of John Kinas**

Peg Kesler, Sharon and Jeanne

**In Memory of Marjorie L. King**

Diana and Randy Fish  
Alice King  
Jeri-Lynn Langwith

**In Memory of Paul F. Kiszka**

Achievement Forum, Inc.  
Mrs. Kelly Crank  
Mrs. Terry O. Kiszka  
Dr. Gary M. Sunada

**In Memory of Daniel M. Kizer**

Rebecca A. Kizer

**In Memory of David (Dave) W. Kleitz**

Baird Foundation, Inc.  
Gloria Hatten-Jones and Chris  
Anne and Kevin Housemeyer  
Mr. and Mrs. Kenneth J. Jobin  
Therese Jobin  
Mr. and Mrs. Michael Kendzicky  
Mr. and Mrs. James L. Lothary  
Cathy and Bob Peterson  
Donald Seggerman  
The Shelley Family

**In Memory of Mae (Flossie) Florence Kleitz**

Baird Foundation, Inc.  
Mr. and Mrs. Kenneth J. Jobin

**In Memory of Dorothy J. Klemczewski**

Mr. and Mrs. Dale Loucks  
Mr. and Mrs. Stephen Ludwig  
Mr. and Mrs. Henry Springman  
David A. Spychalski

**In Memory of Herbert E. Kline**

Albert J. Brasseur Harbor Springs Financial  
Mgmt

Marsha and Jim Caldwell

Hepton Union Church  
Angela and Rex Klotz  
Elaine and Tom Monhaut and Family  
Cecelia and Gary Pugh  
Julie and Bob Roger and Family  
Barb and Charlie Sauter

**In Memory of Arthur Klingerman**

Judith Kleiner

**In Memory of Dale D. Klingerman**

Anonymous  
Sam L. Berger  
Circle Y Saddles, Inc.  
Laurie and Dave Klockow  
Shiloh Church, Class #12  
Nicholas Yoder

**In Memory of Laura LaVon Klinghammer**

Ms. Peggy Henderson

**In Memory of Angela (Angie) Kloski**

Mr. and Mrs. Kenith D. Hansen

**In Memory of Lillian Irene Koltowski**

Virgil Jordan

**In Memory of Ervin A. Kominkiewicz**

Loretta Ewald  
Ms. Deborah Gregson

**In Memory of Carole Koontz**

Ms. Carol A. Hahn  
Progressive Pork Concepts, Inc.

**In Memory of Raymond (Ray) R. Kowalewski**

Charlene and Frank Bralick  
Mr. and Mrs. Larry Cadieux and Steve  
Sylvia and Robert Downs  
Susan and John Machowiak  
Marcy and Alan Mangus  
Mr. and Mrs. John F. Sweeney  
Lorraine and Elmer VanDeWielie

**In Memory of Alex J. Kowalski, Sr**

Mr. and Mrs. Larry Beaver  
Mrs. Rose Chodzinski  
Jackie and Stephen Dunafin  
The Catherine Horban Family  
Rosemary Jacks  
Mr. and Mrs. Edmund R. Kaplon  
Marie and Mike Kastner  
Mr. and Mrs. Jeffrey G. Kin  
Janet and Gary Kosinski  
James Kowalski

Joan and Tom Kulwicki  
Mrs. Elaine M. Niegos  
Mr. and Mrs. James E. Niemasik  
Cindy and Ron Opaczewski

Sue and Larry Portolese and Family

Mr. and Mrs. Joseph A. Sosinski  
Barbara Wassenhove and Daughters  
Claude Zakrocki

Millie Zelasko

Debbie and Mike Zielinski  
Lottie and Harry Zmyslo

Mr. and Mrs. Joseph A. Sosinski

Barbara Wassenhove and Daughters  
Claude Zakrocki

Millie Zelasko

Debbie and Mike Zielinski  
Lottie and Harry Zmyslo

Mr. and Mrs. Joseph A. Sosinski

Barbara Wassenhove and Daughters  
Claude Zakrocki

Millie Zelasko

Debbie and Mike Zielinski  
Lottie and Harry Zmyslo

Mr. and Mrs. Joseph A. Sosinski

Barbara Wassenhove and Daughters  
Claude Zakrocki

Millie Zelasko

Debbie and Mike Zielinski  
Lottie and Harry Zmyslo

Mr. and Mrs. Joseph A. Sosinski

Barbara Wassenhove and Daughters  
Claude Zakrocki

Millie Zelasko

Debbie and Mike Zielinski  
Lottie and Harry Zmyslo

Mr. and Mrs. Joseph A. Sosinski

Barbara Wassenhove and Daughters  
Claude Zakrocki

Mrs. Glennadean Romeu  
Barbara and George Stump  
Mr. and Mrs. Gerald F. Vascil  
Cathy and Chris Wynne

**In Memory of Walter (Walt) J. Krol**

Veronica VanOverberghe

**In Memory of Louis (Lou) W. Krueper, Sr**

Mary Jo Campbell  
Robert E. Dunbar, Sr  
Mr. and Mrs. Dave Fields  
Harriet Flowers  
Gail and Steve Flowers  
Dr. and Mrs. John M. Jacobs  
Sue and Tom Kinnucan  
Janet Pfeil  
Carmelo Ritschard  
Bill Schlarb  
Mr. and Mrs. Jerry Stull  
Lori and Barry Vanslager  
The Wolf Family

**In Memory of Christopher James Krug**

Connie and Gerry Bidlack

**In Memory of Herman Kruis**

Mr. and Mrs. Steven H. Kruis

**In Memory of Raymond Krych**

Joanne M. Grzeskowiak

**In Memory of Milos Kubat**

Dawn Moffett

**In Memory of Clement A. Kubiak**

Lisa and Chad Cherrone  
Communication Company of South Bend  
Barbara A. Kubiak and Barry L. Schleiger  
Ms. Marguerite J. Micucci

**In Memory of Marguerite E. Kubiak**

Lisa and Chad Cherrone  
Communication Company of South Bend,  
Employees

Barbara A. Kubiak and Barry L. Schleiger

**In Memory of Mary Ellen Kubiak**

Carl Kubiak

**In Memory of Kenneth (Clem) Clement**

Kuespert  
Elfrieda Kuespert

**In Memory of John M. Kuharic**

Elsie L. DeMeulenaere  
Theweah and Art Hartig  
Elaine and Butch Katovsich  
Ralph Kifowit  
Ms. Frances A. Lemanski  
Jane Mittleman  
Rosalee Morris  
Mrs. Margaret A. Moss  
Irma and Richard Schultheis  
Lisa and David Smith  
Robert H. Whitmer

**In Memory of Raymond S. Kujawa**

Walt Gromski  
Florence and Robert Ryll

**In Memory of Lori Ann Kulczar**

Alan Hummel

**In Memory of Nipa Yai Kumwong**

Karen and Dan Oakley  
Mr. and Mrs. Paul Romanetz

**In Memory of Margaret A. Kurman**

Ms. Kathy J. Ulrich

**In Memory of Helen Kwasnieski**

Mr. and Mrs. Joseph Kwasnieski

**In Memory of Marvin (Marv) Martin**

Kwiecinski  
Vincent Carver  
Hazel Jones  
Jim Kaczmarek  
The Shepler Family—Sherrill, Jon (Jack),  
Jackie  
Theresa Sikorski and Stanley Grohowski

**In Memory of Dall (Rick) Kyle**

Aroma United Methodist Church  
Christy and Randy Brewers  
Jackie and Bill Clindaniel  
Mrs. Marianne Perry-Marshall  
Mr. and Mrs. L. E. Sliger  
Mr. and Mrs. Reg Stanley

**In Memory of Maxine M. Kyle**

Mrs. Marianne Perry-Marshall

**In Memory of Josephine Kytta**

James L. Frain  
Ron Rudolph  
South Bend Medical Foundation

**In Memory of Ralph C. Lacy**

Judith Lacy

**In Memory of Thomas Richard LaFree**

Bonnie and Randall Suttor

**In Memory of Mary Lahners**

LaPorte County Health Department

**In Memory of Ginny Lait**

Marie Wiseman and Jim Wiseman

**In Memory of Ernest U. Lang**

JoAnn Lang

**In Memory of Phyllis Rose Lindvall**

Mrs. Rochelle M. Drang  
Mt. Olive United Methodist Church  
**In Memory of Mary Elizabeth Lipari**  
Pat Jachimack  
Deanna Latson  
Josephine Mayfield  
National Auto Research/Black Book  
Joann Robinson

**In Memory of John E. Larkin, Jr**

Sharon E. Nyberg

**In Memory of Joseph S. Laweck**

Mrs. Kathleen L. Laweck

**In Memory of Leda Layden**

Violet Layden  
Tom Parsons

**In Memory of Michael A. Layden**

Anonymous  
Mr. Peter Blum  
Mr. and Mrs. Barry E. Flanigan  
Nancy and Ernie Galos  
Dolores and William Harris  
Linda Johnson

**In Memory of Samuel E. Leake**

Mr. and Mrs. John T. Brown, Jr

**In Memory of Lois Lehman**

Mr. and Mrs. Steven A. Strong

**In Memory of Frank J. Leitner**

Mr. Brian M. Leitner

**In Memory of Joe Lemler**

Mrs. Susan Houin

**In Memory of Eva (Bertie) Roberta Lenox**

Linda and Robert Davidson

**In Memory of Dorothy Leonard**

Kathleen Pelletier Moriarty

**In Memory of Belinda J. Leonard-Morris**

Pamela L. Haas-Watson

**In Memory of Frances Lerman-Berebitsky**

Mr. and Mrs. Michael Lerman

**In Memory of Berneice O. Lesley**

Ms. Virginia Guttman

**In Memory of Ronald L. Lester**

Jill Lester

**In Memory of James S. Leszczynski**

Rita and John Leszczynski  
Claire and Richard Stefaniak

**In Memory of Susan Marie LeVeque**

Tom Frederick  
Mrs. Laura A. Phillips

**In Memory of Leo (Frenchie) Paul Levesque**

Shelia and Phil Kennedy

**In Memory of William Thomas Levesque**

Shelia and Phil Kennedy

**In Memory of James Patrick Leyes**

Mary Pat and Dick Nussbaum

**In Memory of A. Irene Light**

Anonymous  
Mr. and Mrs. Eldean Hamilton

**In Memory of Evie Limberg**

David M. Limberg

**In Memory of Phyllis Rose Lindvall**

Mrs. Rochelle M. Drang  
Mt. Olive United Methodist Church

**In Memory of Mary Elizabeth Lipari**

Pat Jachimack  
Deanna Latson  
Josephine Mayfield  
National Auto Research/Black Book  
Joann Robinson

**In Memory of Nancy Livingston**

Mr. Larry N. Livingston

**In Memory of Robert Livingston**

Judith Friend

**In Memory of Sandra (Sandy) N. Lohman**

Anonymous  
Mr. Peter Blum  
Mr. and Mrs. Barry E. Flanigan  
Nancy and Ernie Galos  
Dolores and William Harris  
Linda Johnson

Sue Krizmanich  
Mr. and Mrs. David F. Miller  
Anila Mondabaugh  
Barb Nawrot  
Barbara and Vincent O'Connor  
Edna Parcell  
Kathy Pask  
Michelle and Dave Remley  
Mr. and Mrs. Michael K. Rhodes  
Al Stoddard, Kat and Scott, Katy and Chad

**In Memory of Susan (Suzy) Kay Long**

Courtney Whitney

**In Memory of Rita A. Lopinski**

Linda R. and Paul V. Austin  
Dorothy Jane Compton  
Mr. Henry Flis  
Mr. and Mrs. Dennis Janowiak  
Debbie Kruyer  
Mrs. Barbara Krynski  
Mr. and Mrs. Kevin L. Maggett  
Ms. Marianna Matelski  
Mrs. Peggy L. McGowan  
Ms. Charleen L. McIntosh  
Mrs. Angeline Michalak  
Mr. Robert Swithliski  
Ms. Karen M. Troeger  
Ms. Norma Wesoloski  
Mr. and Mrs. Kurt D. Youngs

**In Memory of Joan Lou**

Mr. and Mrs. Thomas E. Sullivan

**In Memory of Jack A. Lough**

Ms. Margaret Belford  
Christy and Randy Brewers  
Connie and Ray Burbrink  
Barb, Brad, Tony, Julie Cook and Family  
Pats Dunning  
Gail and Dave Duthie  
Richard Enfield  
Pat and Ron Ganger  
Mr. and Mrs. Brian M. Griman  
Jinny and Bill LaRue  
Sherry Losee  
Arlene and Leonard Lucchese  
Ozzie

**In Memory of Richard W. Marshall**

Mrs. Sharon A. Marshall

**In Memory of Lyle E. Massing**

Susan Beggs  
Mr. and Mrs. James J. Cira, Jr  
Dr. and Mrs. David A. Cory  
Mr. and Mrs. Richard A. Jankowski  
Vic and Lois Krol  
Ann Pukrop  
Mary Jane Stanley  
Carol and Steve Suth  
Barbara Szymanski  
Chris and Jim Wallace  
Mary Ann and Tom Wozniak

**In Memory of Kenneth L. Luse**

Mrs. Mary A. Luse

**In Memory of Henry Machalski**

Joan M. Beesley

**In Memory of Margaret R. Machalski**

Joan M. Beesley

**In Memory of Gerald (Jerry) P. Maher**

Mrs. Georgeanna Caldwell

**In Memory of Harold M. Mahler**

Mr. and Mrs. William Ruhling, Jr

**In Memory of William (Billy) Edward Maich**

Jessica and Paul Maich

**In Memory of Clement J. Makely**

Sharon Jones

**In Memory of Dorothy A. Makely**

Sharon Jones

**In Memory of Alice (Theresa) T. Makielski**

Mr. Norman S. Makielski

**In Memory of Brigitte Malling**

Mr. Lance D. Malling

**In Memory of Lawrence (Larry) L. Malstaff**

Dee Allen  
Charles Battaglia  
Shirley and Amos Malstaff  
Jan and Jerry Malstaff, Terry and Mark  
Sue Shields

**In Memory of Delores L. Manuszak**

Richard E. Manuszak

**In Memory of Mary Esther Marker**

Mr. and Mrs. John F. Blum  
Mr. Brett E. LaMont  
Mr. and Mrs. Allen Marker  
Mr. and Mrs. John Sekendy  
Betty Wiseman

**In Memory of Dorothy Ruth Marks**

Gary, Jared and Aaron Horvath  
Byra Warner

**In Memory of Wanda L. Marsh**

Sue Dooley  
Christine Fojtik  
Mr. Lee R. Haven  
Sandra Shults and Marion Shults  
Bev and Scott Tillman  
Mr. and Mrs. James O. Watson

**In Memory of James Marshall**

Midland Engineering Company

**In Memory of Robert W. Marshall**



*In Memory (continued)*

**In Memory of Leona E. Meyer**  
Deborah and Paul Cafiero

**In Memory of Ronald W. Michalski**  
Pat and Mike Mondovics

**In Memory of David J. Michaud**  
Airfield Maintenance  
Sons of American Legion Post #357  
Sandy and Al Carmon  
Jane Dobrucki  
Mrs. Helen D. Golubski  
Dorothy Lindorf  
Mr. and Mrs. Leonard Prentkowski  
St. Joseph County Airport Authority  
Mrs. Genevieve Ziolkowski

**In Memory of Zenobia E. Migas**  
John Migas

**In Memory of Mary Mikel**  
Mr. and Mrs. Warren DeFerbrache  
T Shorter Manufacturing, Inc.  
Jane A. Shorter  
Terry Shorter  
Marian R. Wendowski  
Madelyn and John Zimmer

**In Memory of Mary (M.A.) Alice Mikulak**  
Mr. Julius E. Mikulak

**In Memory of Neil E. Milford**  
Carol and Bob Beeker

**In Memory of Betty Marie Miller**  
Ms. Agnes J. Anderson  
Sandra and Richard Bothe  
Colleen Kubacki  
Mr. and Mrs. Charles Raes and Family  
Elsie M. Raes

**In Memory of D. Maxine Miller**  
Phyllis Schade

**In Memory of Erma G. Miller**  
Louis A. Annis, Jr  
Beverly and Maynard Feitz  
Linda and James Garver  
Jeanne and Russell Geyer  
Sharon and Don Hall

Janet and Garry Hall and Family  
Jan and Ritchie Hanefeld  
David K. Hathaway  
Diane and Gerald Kaufman  
Mr. and Mrs. Jerry Kline  
Robin Mevis  
Linda, Jeff, Rodney, Matt Miller  
Wanda Miller  
Ms. Evelyn Penrod  
Shirley and Richard Pugh  
Peggy and Ken Rinkenber  
Val June Schafer  
John Jr. , Diane and John Small  
Lu and Bill Town  
Vera and Don Whisman

**In Memory of Ernest D. Miller**  
Orpha Miller

**In Memory of Frederick (Fred) L. Miller**  
Somers Square East Homeowners Asso.

**In Memory of Homer Eugene Miller**  
Nelson W. Worden, MD

**In Memory of John A. Miller**  
Anonymous  
Peggy and Bryan Ciula  
Julia and John Dierickx and Family  
Masterbilt, Inc.  
Ms. Sheila J. McKinney  
Mr. Carl M. Michalski  
Ms. Patricia S. Recca  
Ross Engineering & Machine, Inc.

**In Memory of Julie A. Miller**  
Joan and Gerald Gerard

**In Memory of Kenneth (Kenny) Harley Miller**  
Pat Badur  
Mary Lou and Carl Bennett  
Friends of the Family  
Elaine and Lenny Gish

**In Memory of L. B. Miller**  
Joan Skinner

**In Memory of Margaret D. Miller**  
Ms. Sonia Fishburn  
Carole and Cliff Grimm  
Mary Ann Kalka

**In Memory of Robert E. Miller, Sr**  
LuAnn and Darwin Beron  
Nate Fisher  
Jean Gregorich  
Nancy and John Gruber  
Sylvia and Barry Halfhill  
Mrs. Vera Halfhill  
Donna and Brent Hemmerlein  
Mr. Leland M. Holston  
John Hancock Financial  
Kathleen and William Kane  
Rita and Larry Keeley  
Legacy Financial Partners  
Gary and Janyce Moore  
Nu-Wool  
In Memory of George J. Minarik  
Judy and Jon Cauffman

**In Memory of Brent Adam Mishler**  
Lorraine and Elmer VanDeWiele

**In Memory of Lucille Betty Mnichowski**  
Dr. Paul Bleiweis  
Energy Automation Systems, Inc.

**In Memory of Bessie J. Mochamer**  
Tara and Augie Agosti  
Sarah and Scott Amos  
Jackie and Bill Douwsma  
Matt Geiger  
Mrs. and Dr. Edward Grogg  
Mr. and Mrs. Terry L. Hartzler  
Nancy and Woody Nicholas  
Mr. Russell L. Nixon  
Marjorie and James Teed  
Sally Vaughn  
Elias and Susan Vaughn Ybarra

**In Memory of June M. Molenda**  
Mr. and Mrs. John M. Stephenson

**In Memory of Ann Marie Monhaut**  
Janet and Richard Freeman

**In Memory of Annie L. Moody**  
Reva Moody

**In Memory of Edward David Moore**  
June and LeRoy Toner

**In Memory of Leola J. Moore**  
Lana and Adrian Mark

**In Memory of Dorothy D. Moorman**  
Mr. John A. Moorman

**In Memory of Ron Morris**  
Sharon E. Gregor

**In Memory of Jane Lindley Mossey**  
Mrs. Mary E. Naquin

**In Memory of Brandon Mowery**  
Carmen Mowery

**In Memory of Ardis Moyer**  
Mr. and Mrs. Kelly Moyer

**In Memory of Dennis (Denny) Moyer**  
Mr. and Mrs. Kelly Moyer

**In Memory of Kyle Moyer**  
Mr. and Mrs. Kelly Moyer

**In Memory of Leo Moyer**  
Mr. and Mrs. Kelly Moyer

**In Memory of Peg Moyer**  
Mr. and Mrs. Kelly Moyer

**In Memory of Arnold A. Much**  
Mr. and Mrs. Darryl D. Much

**In Memory of Irene Mucha**  
Mr. and Mrs. Dennis Janowiak

**In Memory of Angela H. Murat**  
Mr. and Mrs. Roger E. Lumm

**In Memory of Ruth V. Murphy-Weigel**  
Mary Ann and Jerry Cavanah  
Terry and James Cinal  
Barb and Dave Cocanower  
Carolyn and Louis Frick  
Mary Ann Klebusits  
Mr. and Mrs. Donald S. Miller  
Ruth Ann Murphy  
Mr. and Mrs. Tom Nate  
Lorie Rauch  
Ms. Elinor M. Sharp  
Dr. and Mrs. James Shell  
C. J. Sommerfield  
Mr. and Mrs. Stanley Sunderwirth  
Mr. and Mrs. Jerry Thacker  
Linda and Dale Zbrzezny

**In Memory of Marshall Murray**  
Mr. Mark M Murray

**In Memory of Martha N. Murray**  
Mr. Mark M Murray

**In Memory of Judith Waneta Myers**  
Anonymous  
Phyllis Hollar

Mr. and Mrs. Steve L. Kammerdiener  
Carm and Lee Myers, Connie, Chris, Christy,  
Cliff, Kim, Peter and Families

Kathy and Denny Neff  
Jayne Neff  
Susan and Kenny Neff  
Sue and Steve Paynel

Dorothy Rock  
Mr. and Mrs. William L. Tarmen  
Suellen and Mike Wilhelm

**In Memory of Virginia (Jinny) M. Myers**  
Mr. and Mrs. Daniel S. Trippel

**In Memory of William (Bill) B. Myers**  
Mrs. Mary E. Naquin

**In Memory of Judith A. Nagy**  
Lisa and Chad Cherrone

**In Memory of Thomas F. Najacht**  
Jeremy, Lisa and Dave Burns

**In Memory of Jean Marie Napierkowski-White**  
Mrs. Darlene B. Beach

**In Memory of Ann Naylor**  
Mr. Lewis M. Naylor

**In Memory of Donna C. Neely**  
Mr. and Mrs. Michael D. Caurro  
Leona Donovan  
Mr. and Mrs. Jess N. Neely  
Roxanne and John Pallo  
Mr. and Mrs. Carl E. Romine

**In Memory of Bernhard (Bernie) Henry Neitzel, Jr**  
Mr. and Mrs. Robert Olcott

**In Memory of Naomi Ruth Nelson**  
Mr. and Mrs. John H. Nelson  
Mr. and Mrs. William J. Nelson

**In Memory of William (Bill) T. Nelson, Jr**  
Debbie and Mark Kamm

**In Memory of Jeffrey J. Neuffer, Sr**  
Mrs. Susan A. Hartup-Neuffer

**In Memory of Robert (Bob) Lee Newton, Sr**  
Mr. and Mrs. Rodney Anders  
Anonymous  
Beatrice and Donald Ansbaugh  
Dec-O-Art, Inc. and Employees  
Mr. and Mrs. Gregory S. Downes  
Mrs. Carol Dudeck  
Joyce L. Fragomeni  
The Hektor Families  
Peggy and Julius (Corky) Horvath  
Mr. and Mrs. James Kohler  
LaVille Youth Soccer  
Ms. Lila J. Merrick  
Midway Truck & Equipment Repair  
Mr. and Mrs. Donald B. Newton

The David Schrock Family  
Lisa Tyler  
Mr. and Mrs. Peter Veldman

**In Memory of Alice (Judy) M. Niblick**  
Sally Ballatore

**In Memory of Gertrude V. Niedbalski**  
Mary Niedbalski

**In Memory of Jon L. Nieter**  
Lucy Nieter

**In Memory of Stella A. Niezgodski**  
Kathryn and Martin Albright  
Mr. and Mrs. Raymond C. Cressy  
Ms. Christine M. Galwas  
Colleen Kelsick  
Sandra Machowiak  
Loretta and Mike Manley  
Mr. and Mrs. Robert F. Meyer  
Theresa and Daniel Niedbalski  
Ms. Dorothy Starzynski and Family  
Sarah and Nick Tepe

**In Memory of Helen Olson**  
Kathy, Lynn, Peter and Judith Nani

**In Memory of David M. Omans**  
Ms. Julia J. Bodman  
Mrs. Lauren Cora  
Mr. and Mrs. Gary A. Reynolds  
Sarah Sowles

**In Memory of Helen-Marie Lewis O'Neill**  
Greta and Jay Lewis

**In Memory of John Eugene O'Neill**  
Tom Frederick

**In Memory of Oma Overton**  
Mr. and Mrs. Larry Chojnacki  
Mary Kilbourn  
Mr. and Mrs. Steve Sirovica

**In Memory of Emilia Pados**  
Ms. Ann M. Pados

**In Memory of Rocco (Rocky) P. Papandria, Jr**  
Mr. and Mrs. Robert E. Canfield  
Pam and Vic DeCola  
Mr. Joseph M. DeSarla  
Ms. Kelly DeSarla  
Miss Tiffany A. DeSarla  
Gwen and Tom Ehlers and Family  
Erskine Family Dentistry  
Mr. and Mrs. Paul T. Farthing  
G & J Ranwood, Inc.  
Valerie and John Gaylor  
Joseph P. Lupresto  
Mr. and Mrs. David Molnar  
George Papandria  
Vicki and Larry Pauwels  
Gordon Randolph  
John Ranwood  
Mr. and Mrs. William R. Rasmussen, Jr  
Mr. John Szobocsan  
Mrs. Mary Ann Szobocsan  
Mr. Roger W. Thornton  
Gina and Zach Thundy  
Lynn and Mike Verhaeghe  
Jen Versyp  
Sandy and Kris Weger  
Mark and Suzanne Wiwi

**In Memory of Bernard (Joe) J. Oblinger, Sr**  
Toots and Alex Benko  
Jolene and Dave Hanna

**In Memory of Robert E. Ogorek**  
Marianne Dimos

**In Memory of William (Bill) Guy O'Hara, II**  
Dr. and Mrs. Richard C. Boling, II  
Mr. and Mrs. William F. Bradley  
Mr. and Mrs. Eric Casper  
Georgia Clawson  
Jet and Doug Fites  
Caroline and Frank Flowers  
Mrs. Carol Dudeck  
Joyce L. Fragomeni  
The Hektor Families  
Peggy and Julius (Corky) Horvath  
Mr. and Mrs. James Kohler  
LaVille Youth Soccer  
Ms. Lila J. Merrick  
Midway Truck & Equipment Repair  
Mr. and Mrs. Donald B. Newton

**In Memory of Margaret M. Nutter**  
Mrs. Pat Kopinski

**In Memory of David (Dave) A. Nyberg**  
Carl Kubiak  
Sharon E. Nyberg

**In Memory of Bernard (Joe) J. Oblinger, Sr**  
Toots and Alex Benko  
Jolene and Dave Hanna

**In Memory of Robert E. Ogorek**  
Marianne Dimos

**In Memory of William (Bill) Guy O'Hara, II**  
Dr. and Mrs. Richard C. Boling, II  
Mr. and Mrs. William F. Bradley  
Mr. and Mrs. Eric Casper  
Georgia Clawson  
Jet and Doug Fites  
Caroline and Frank Flowers  
Mrs. Carol Dudeck  
Joyce L. Fragomeni  
The Hektor Families  
Peggy and Julius (Corky) Horvath  
Mr. and Mrs. James Kohler  
LaVille Youth Soccer  
Ms. Lila J. Merrick  
Midway Truck & Equipment Repair  
Mr. and Mrs. Donald B. Newton

**In Memory of Margaret M. Nutter**  
Mrs. Pat Kopinski

**In Memory of David (Dave) A. Nyberg**  
Carl Kubiak  
Sharon E. Nyberg

**In Memory of Bernard (Joe) J. Oblinger, Sr**  
Toots and Alex Benko  
Jolene and Dave Hanna

**In Memory of Robert E. Ogorek**  
Marianne Dimos

**In Memory of William (Bill) Guy O'Hara, II**  
Dr. and Mrs. Richard C. Boling, II  
Mr. and Mrs. William F. Bradley  
Mr. and Mrs. Eric Casper  
Georgia Clawson  
Jet and Doug Fites  
Caroline and Frank Flowers  
Mrs. Carol Dudeck  
Joyce L. Fragomeni  
The Hektor Families  
Peggy and Julius (Corky) Horvath  
Mr. and Mrs. James Kohler  
LaVille Youth Soccer  
Ms. Lila J. Merrick  
Midway Truck & Equipment Repair  
Mr. and Mrs. Donald B. Newton

**In Memory of Margaret M. Nutter**  
Mrs. Pat Kopinski

**In Memory of David (Dave) A. Nyberg**  
Carl Kubiak  
Sharon E. Nyberg

**In Memory of Bernard (Joe) J. Oblinger, Sr**  
Toots and Alex Benko  
Jolene and Dave Hanna

**In Memory of Robert E. Ogorek**  
Marianne Dimos

**In Memory of William (Bill) Guy O'Hara, II**  
Dr. and Mrs. Richard C. Boling, II  
Mr. and Mrs. William F. Bradley  
Mr. and Mrs. Eric Casper  
Georgia Clawson  
Jet and Doug Fites  
Caroline and Frank Flowers  
Mrs. Carol Dudeck  
Joyce L. Fragomeni  
The Hektor Families  
Peggy and Julius (Corky) Horvath  
Mr. and Mrs. James Kohler  
LaVille Youth Soccer  
Ms. Lila J. Merrick  
Midway Truck & Equipment Repair  
Mr. and Mrs. Donald B. Newton

The Light Family  
Mr. and Mrs. Randy Light  
Mr. David A. Marvel  
Sue and Mike McCammon  
Mr. and Mrs. Gregory J. Miars  
Margie and Mike Petersen  
Judy and Don Ruszkowski  
Mr. and Mrs. Kenneth W. Squires  
Mr. and Mrs. Peter Waite

**In Memory of Frank J. Olis**  
Judy and Jeff Bertsch  
Sue and Bob Kistler  
OKI Date Americas, Inc.  
Ginger and David Ready  
Jennifer and Jay Rudynski  
Mrs. Patricia R. Stewart  
Barb and Gary West

**In Memory of Helen Olson**  
Kathy, Lynn, Peter and Judith Nani

**In Memory of David M. Omans**  
Ms. Julia J. Bodman  
Mrs. Lauren Cora  
Mr. and Mrs. Gary A. Reynolds  
Sarah Sowles

**In Memory of Helen-Marie Lewis O'Neill**  
Greta and Jay Lewis

**In Memory of John Eugene O'Neill**  
Tom Frederick

**In Memory of Oma Overton**  
Mr. and Mrs. Larry Chojnacki  
Mary Kilbourn  
Mr. and Mrs. Steve Sirovica

**In Memory of Emilia Pados**  
Ms. Ann M. Pados

**In Memory of Rocco (Rocky) P. Papandria, Jr**  
Mr. and Mrs. Robert E. Canfield  
Pam and Vic DeCola  
Mr. Joseph M. DeSarla  
Ms. Kelly DeSarla  
Miss Tiffany A. DeSarla  
Gwen and Tom Ehlers and Family  
Erskine Family Dentistry  
Mr. and Mrs. Paul T. Farthing  
G & J Ranwood, Inc.  
Valerie and John Gaylor  
Joseph P. Lupresto  
Mr. and Mrs. David Molnar  
George Papandria  
Vicki and Larry Pauwels  
Gordon Randolph  
John Ranwood  
Mr. and Mrs. William R. Rasmussen, Jr  
Mr. John Szobocsan  
Mrs. Mary Ann Szobocsan  
Mr. Roger W. Thornton  
Gina and Zach Thundy  
Lynn and Mike Verhaeghe  
Jen Versyp  
Sandy and Kris Weger  
Mark and Suzanne Wiwi

**In Memory of Margaret M. Nutter**  
Mrs. Pat Kopinski

**In Memory of David (Dave) A. Nyberg**  
Carl Kubiak  
Sharon E. Nyberg

**In Memory of Bernard (Joe) J. Oblinger, Sr**  
Toots and Alex Benko  
Jolene and Dave Hanna

**In Memory of Robert E. Ogorek**  
Marianne Dimos

**In Memory of William (Bill) Guy O'Hara, II**  
Dr. and Mrs. Richard C. Boling, II  
Mr. and Mrs. William F. Bradley  
Mr. and Mrs. Eric Casper  
Georgia Clawson  
Jet and Doug Fites  
Caroline and Frank Flowers  
Mrs. Carol Dudeck  
Joyce L. Fragomeni  
The Hektor Families  
Peggy and Julius (Corky) Horvath  
Mr. and Mrs. James Kohler  
LaVille Youth Soccer  
Ms. Lila J. Merrick  
Midway Truck & Equipment Repair  
Mr. and Mrs. Donald B. Newton

**In Memory of Margaret M. Nutter**  
Mrs. Pat Kopinski

**In Memory of David (Dave) A. Nyberg**  
Carl Kubiak  
Sharon E. Nyberg

**In Memory of Bernard (Joe) J. Oblinger, Sr**  
Toots and Alex Benko  
Jolene and Dave Hanna

**In Memory of Robert E. Ogorek**  
Marianne Dimos

**In Memory of William (Bill) Guy O'Hara, II**  
Dr. and Mrs. Richard C. Boling, II  
Mr. and Mrs. William F. Bradley  
Mr. and Mrs. Eric Casper  
Georgia Clawson  
Jet and Doug Fites  
Caroline and Frank Flowers  
Mrs. Carol Dudeck  
Joyce L. Fragomeni  
The Hektor Families  
Peggy and Julius (Corky) Horvath  
Mr. and Mrs. James Kohler  
LaVille Youth Soccer  
Ms. Lila J. Merrick  
Midway Truck & Equipment Repair  
Mr. and Mrs. Donald B. Newton

**In Memory of Margaret M. Nutter**  
Mrs. Pat Kopinski

**In Memory of David (Dave) A. Nyberg**  
Carl Kubiak  
Sharon E. Nyberg

**In Memory of Bernard (Joe) J. Oblinger, Sr**  
Toots and Alex Benko  
Jolene and Dave Hanna

**In Memory of Robert E. Ogorek**  
Marianne Dimos

**In Memory of William (Bill) Guy O'Hara, II**  
Dr. and Mrs. Richard C. Boling, II  
Mr. and Mrs. William F. Bradley  
Mr. and Mrs. Eric Casper  
Georgia Clawson  
Jet and Doug Fites  
Caroline and Frank Flowers  
Mrs. Carol Dudeck  
Joyce L. Fragomeni  
The Hektor Families  
Peggy and Julius (Corky) Horvath  
Mr. and Mrs. James Kohler  
LaVille Youth Soccer  
Ms. Lila J. Merrick  
Midway Truck & Equipment Repair  
Mr. and Mrs. Donald B. Newton

**In Memory of Margaret M. Nutter**  
Mrs. Pat Kopinski

**In Memory of David (Dave) A. Nyberg**  
Carl Kubiak  
Sharon E. Nyberg

**In Memory of Bernard (Joe) J. Oblinger, Sr**  
Toots and Alex Benko  
Jolene and Dave Hanna

**In Memory of Robert E. Ogorek**  
Marianne Dimos

**In Memory of My Parents**  
Ms. Carrie A. Nowak

**In Memory of Margaret G. Parlin**  
Gallagher Bassett Services  
Chris Pettit

**In Memory of Elmer P. Parmley**  
Bill Geyer

**In Memory of Gladys Paseltiner**  
Ms. Lynn Paseltiner

**In Memory of Dennis G. Paturalski**  
Irene Abbott  
Barbara and John Baker  
Lester Berger  
GreenStone Farm Credit Services  
Patty and Terry Richard  
Brenda Dhazez  
Mr. and Mrs. Gregory L. Hornung  
Harrison, Lana and Ken Huys  
Rosemary Jacks  
Martha and Dean Keeler  
Roy Kohler  
Mary Anne Miller  
Lyn and Jon Ridenour  
Richard Smith  
Mr. Richard M. Smith  
Sally Smith  
Wanda and Herb Story  
Jean Vavul  
Jane and Woody Wodrich  
Judie and Jim Woltman

**In Memory of Walter Pflugshaupt**  
Beverly Pflugshaupt

**In Memory of Robert Phillips**  
Sharon and David Biek

**In Memory of Judith Ann Pietrzak**  
Gina and Larry DeLaruelle

**In Memory of Gerald L. Pike**  
Altie Pike

**In Memory of Rita J. Pinkowski**  
Elizabeth and Scott Ehmen  
Elkhart Community Schools Education Services  
Center, Behavior Consultants  
Billie and Robert Lemanski  
Mary Niedbalski  
Karen Ream, Vince, Kristin and Jeff Shafer  
Mrs. Shirley M. Roemer  
Frances and John Schmanski

**In Memory of William (Bill) J. Piper Peczkowski**  
Mrs. Gloria M. Walkowiak

**In Memory of Clem J. Plencner**  
Mary Ann and Richard Ross

**In Memory of David E. Plonka**  
Dr. Gerald K. Glass  
Dr. Paul B. Glass

**In Memory of David R. Prentkowski**  
Mr. and Mrs. Leonard Prentkowski

**In Memory of Raymond (Ray) E. Preston**  
Mary Jane Preston

**In Memory of My Parents**  
Ms. Carrie A. Nowak

**In Memory of Margaret G. Parlin**  
Gallagher Bassett Services  
Chris Pettit

**In Memory of Elmer P. Parmley**  
Bill Geyer

**In Memory of Gladys Paseltiner**  
Ms. Lynn Paseltiner

**In Memory of Dennis G. Paturalski**  
Irene Abbott  
Barbara and John Baker  
Lester Berger  
GreenStone Farm Credit Services  
Patty and Terry Richard  
Brenda Dhazez  
Mr. and Mrs. Gregory L. Hornung  
Harrison, Lana and Ken Huys  
Rosemary Jacks  
Martha and Dean Keeler  
Roy Kohler  
Mary Anne Miller  
Lyn and Jon Ridenour  
Richard Smith  
Mr. Richard M. Smith  
Sally Smith  
Wanda and Herb Story  
Jean Vavul  
Jane and Woody Wodrich  
Judie and Jim Woltman

**In Memory of Walter Pflugshaupt**  
Beverly Pflugshaupt

**In Memory of Robert Phillips**  
Sharon and David Biek

**In Memory of Judith Ann Pietrzak**  
Gina and Larry DeLaruelle

**In Memory of Gerald L. Pike**  
Altie Pike

**In Memory of Rita J. Pinkowski**  
Elizabeth and Scott Ehmen  
Elkhart Community Schools Education Services  
Center, Behavior Consultants  
Billie and Robert Lemanski  
Mary Niedbalski  
Karen Ream, Vince, Kristin and Jeff Shafer  
Mrs. Shirley M. Roemer  
Frances and John Schmanski

**In Memory of William (Bill) J. Piper Peczkowski**  
Mrs. Gloria M. Walkowiak

**In Memory of Clem J. Plencner**  
Mary Ann and Richard Ross

**In Memory of David E. Plonka**  
Dr. Gerald K. Glass  
Dr. Paul B. Glass

**In Memory of David R. Prentkowski**  
Mr. and Mrs. Leonard Prentkowski

**In Memory of Raymond (Ray) E. Preston**  
Mary Jane Preston

**In Memory of Joseph Pesut**  
Mrs. Dolores Pesut

**In Memory of Nicholas (Nick) P. Petrella, III**  
Nancy Banks  
Horizon Elementary School Staff  
Mr. and Mrs. Douglas A. Willoughby

**In Memory of Carl L. Pfaller, Jr**  
Marti and Butch Bartels  
Connie and Denny Brock  
Beverly Brooks  
Frances Buysse and Family  
H. Terry Cates  
The Cramer Family  
Jan and Dale Dabrowiak  
Brenda Dhazez  
Mr. and Mrs. Gregory L. Hornung  
Harrison, Lana and Ken Huys  
Rosemary Jacks  
Martha and Dean Keeler  
Roy Kohler  
Mary Anne Miller  
Lyn and Jon Ridenour  
Richard Smith  
Mr. Richard M. Smith  
Sally Smith  
Wanda and Herb Story  
Jean Vavul  
Jane and Woody Wodrich  
Judie and Jim Woltman

**In Memory of Walter Pflugshaupt**  
Beverly Pflugshaupt

**In Memory of Robert Phillips**  
Sharon and David Biek

**In Memory of Judith Ann Pietrzak**  
Gina and Larry DeLaruelle

**In Memory of Gerald L. Pike**  
Altie Pike

**In Memory of Rita J. Pinkowski**  
Elizabeth and Scott Ehmen  
Elkhart Community Schools Education Services  
Center, Behavior Consultants  
Billie and Robert Lemanski  
Mary Niedbalski  
Karen Ream, Vince, Kristin and Jeff Shafer  
Mrs. Shirley M. Roemer  
Frances and John Schmanski

**In Memory of William (Bill) J. Piper Peczkowski**  
Mrs. Gloria M. Walkowiak

**In Memory of Clem J. Plencner**  
Mary Ann and Richard Ross

**In Memory of David E. Plonka**  
Dr. Gerald K. Glass  
Dr. Paul B. Glass

**In Memory of David R. Prentkowski**  
Mr. and Mrs. Leonard Prentkowski

**In Memory of Raymond (Ray) E. Preston**  
Mary Jane Preston

**In Memory of Joseph Pesut**  
Mrs. Dolores Pesut

**In Memory of Nicholas (Nick) P. Petrella, III**  
Nancy Banks  
Horizon Elementary School Staff  
Mr. and Mrs. Douglas A. Willoughby

**In Memory of Carl L. Pfaller, Jr**  
Marti and Butch Bartels  
Connie and Denny Brock  
Beverly Brooks  
Frances Buysse and Family  
H. Terry Cates  
The Cramer Family  
Jan and Dale Dabrowiak  
Brenda Dhazez  
Mr. and Mrs. Gregory L. Hornung  
Harrison, Lana and Ken Huys  
Rosemary Jacks  
Martha and Dean Keeler  
Roy Kohler  
Mary Anne Miller  
Lyn and Jon Ridenour  
Richard Smith  
Mr. Richard M. Smith  
Sally Smith  
Wanda and Herb Story  
Jean Vavul  
Jane and Woody Wodrich  
Judie and Jim Woltman

**In Memory of Walter Pflugsh**



**In Memory of Andrew Robb, Jr**  
 Ms. Mary R. Bernard  
 Carol and Bruce Chamberlin  
 Mrs. Kay Cree  
 Marilyn and Dale Dutoi  
 Mary and John Eicher, Linda, Jim, Greta, Scott  
 Mr. and Mrs. Phil Eicher  
 Dr. Gerald K. Glass  
 Dr. Paul B. Glass  
 Cynthia M. Haggerty  
 Kathy and Doug Houser  
 Sharon Kindt  
 Vic and Lois Krol  
 Moser Motor Sales, Inc.  
 Mrs. Unalea Robb  
 Mr. Paul W. Schafer  
 Irma and Richard Schultheis  
 Marjorie and John Schwind  
 Mary Anne and Gene Smith  
 Sherri and Tony Triplet, Zachary, Erin

**In Memory of Joan D. Roberts**  
 Janine and Kris Bergman, Charles, Matt, Ann,  
     Stephen and Family  
 Deni Law Group, LLC  
 Judi and Bill Deni  
 Casey Ickes  
 Kathy Jaworski  
 Charles Meersman, Jr.  
 Johanna Meersman  
 Kevin Meersman  
 Dorothy Melville  
 Melissa and Michael Miller  
 National Assoc. of Letter Carriers, Branch 820  
     Merged  
 Mrs. June H. Schalliol  
 University of Notre Dame  
 Margit J. Wiseman  
 Mrs. Katie J. Zapata

**In Memory of Willie (Bill) R. Roberts**  
 Kristin and O'Dell Ford

**In Memory of Jewell B. Robinson**  
 Ginger and Brian Bell

**In Memory of Marion I. Rodgers-Dare**  
 Shari Ruston  
 Joyce Stebbins

**In Memory of Rocco (Rocky) D. Rodino**  
 Mary and Carl Weinztel

**In Memory of Donna M. Rogers**  
 Ms. Traci L. Bickel  
 Jackie Clindaniel  
 Ann and Mike Crawford  
 Marilyn Ehret  
 Mr. and Mrs. Michael P. Hudnall  
 Eleanor and Ken Koppin  
 Carol Levis  
 Dave Levis  
 Darlene and Bob Levis  
 Mr. William Levis  
 Betty and Ferris Longest  
 Mary and Wayne Mackeben

Patty Niemann  
 Judy Ovel  
 Sally and Paul Reed  
 Sara, Sue and Steve Reiner  
 Scott Their  
**In Memory of Brian D. Rohde**  
 Mr. and Mrs. John Marroni  
**In Memory of Robert (Bob) Leo Roloff**  
 Mary Jo Acrey  
 B & B Molders, LLC  
 Mr. and Mrs. William A. Funari  
 Delores and Larry Roeme  
 Alice and Charles Roloff  
 Somers Square East Homeowners Assoc.  
**In Memory of Catherine (Katie) Joan Roncz**  
 Corky and Erv Karlin  
 Jeri-Lynn Langwith  
**In Memory of Richard R. Rospopo**  
 Michelle and Tom Rospopo  
**In Memory of Clara M. Rozmarynowski**  
 Rhonda and Dale Disterheft  
 Jan and Lloyd Johnson  
 Mr. and Mrs. Chet Kolber  
 Patricia and Eugene Pauszek  
 Mr. and Mrs. Scott Powers  
 Sue Shellenberger  
 Dolly and Frank Sikorski  
 Ms. Joan M. Tharp  
 Barb and Terry Tharp and Family  
 Ms. Sherrie Wallock and Family  
**In Memory of Richard J. Rucano**  
 Mr. and Mrs. Dennis Artusi  
**In Memory of John R. Ruff**  
 Mrs. Sandra E. Ruff  
**In Memory of Eldonna F. Runnels**  
 Louise and Mark Kilbey  
 Sarah and Richard Mesaros and Family  
 Delores Rodriguez  
 Lillian and Gene Zink and Family  
**In Memory of Rebecca (Becky) S. Rush**  
 Larry A. Rush  
**In Memory of Evelyn M. Ruszkowski**  
 Judy and Don Ruszkowski  
 Richard Ruszkowski  
**In Memory of Janice M. Ruszkowski**  
 Marlene and Gene Kaczynski  
 Florence Wrobel and Daughters  
**In Memory of Richard (Dick) Eugene Ry**  
 Peggy Bashore and Family  
 David Elliott  
 Lois R. Elliott  
**In Memory of Ronald (Ron) J. Ryback**  
 Mr. Gregory J. Ryback  
**In Memory of Eileen Rybicki**  
 Reverend Daryl M. Rybicki  
**In Memory of Quinlen Rybicki**  
 Reverend Daryl M. Rybicki

**In Memory of Cecelia Rzepnicki**  
Mr. Casimir B. Rzepnicki

**In Memory of Edmund (Ed) A. Rzepnicki**  
Barry and Tina Rzepnicki

**In Memory of Gaylord Miller Saltzgaber**  
David A. Reinhold

**In Memory of Mildred May Sanders**  
Sue Ann Feece  
Ronald K. Hughes

**In Memory of Maria Dolores Sandoval**  
Ramon Sandoval

**In Memory of Ellen Jayne Sandy**  
LaPorte County Health Department  
Ken Massengill  
Charles Smith

**In Memory of John H. Sass**  
Peggy Steveken and Family  
Mrs. Lorraine Winkel

**In Memory of Ronald (Ron) August Savioie**  
The Rose and Phil Savioie Family

**In Memory of Louis F. Schaefer, Jr**  
Judy A. DeFries

**In Memory of Harold Schafer**  
Rachel Schafer

**In Memory of Malinda (Linda) L. Schalliol**  
Ms. Mattie Prchlik

**In Memory of Aloy B. Scheibelhut**  
Mr. John B. Scheibelhut

**In Memory of Katherine (Katie) A. Scheibelhut**  
Mr. John B. Scheibelhut

**In Memory of Richard Schelling**  
Ms. Deborah M. Schelling

**In Memory of L. (Fred) Frederick Schleiger**  
Lisa and Chad Cherrone  
Communication Company of South Bend,  
Employees  
Barbara A. Kubiak and Barry L. Schleiger

**In Memory of Linda Sue Schlundt**  
Mrs. Sharon R. Guidera  
Mr. Daniel L. Olson  
The David Rachels Family  
Mrs. Gloria M. Walkowiak

**In Memory of Janet Schmanski**  
Sandra and Patrick Carrico  
Beth and Dan Case  
Marilyn and Rick O'Reilly  
Diane and Bill Trethewey

**In Memory of Louis Schmidt**  
Mrs. Sharon A. Marshall

**In Memory of Elsie Ann Schoenfelder**  
Vicky Nix and David Klink

**In Memory of Henry F. Schricker, Jr**  
Mr. and Mrs. Lawrence E. Wagner

**In Memory of Leonel L. Schrock**  
Gem City Plastic Machinery, Inc.

**In Memory of Mary W. Schrock**  
Mr. and Mrs. Elmer Schrock

**In Memory of Thomas (Tom) Hilton Schrock**  
Betty and Don Schrock

**In Memory of Dewayne C. Schuh**  
Lester Berger

**In Memory of Patricia A. Schultz**  
Shirley and Charles Eaton

**In Memory of Susann Schultz**  
Ms. Lisa M. Dew

**In Memory of Margaret (Peggy) Schwartz**  
Daniel Sosnoski

**In Memory of Honorata M. Sciba**  
Mary Rzeszewski

**In Memory of Jean F. Szczepankiewicz**  
American Legion Auxiliary Post 357  
Mr. and Mrs. Norbert I. Gapczynski  
Mrs. Dolores J. Liwosz  
Rose Marie Polonka  
Dorothy Remley  
Lillian and John Trytko

**In Memory of Stephen (Harry) H. Seall**  
Dr. and Mrs. Richard H. Seall  
Mr. and Mrs. Stephen A. Seall

**In Memory of John T. Seanor, Jr**  
Diane and Tim Ahart  
Mary and Carmelo Blanda  
Esther and Chester Borowski  
Jeanne Cassler  
Ms. Sandra Clark  
Diane and Michael Durkin  
Joyce and Steve Forbes  
Nancy Garcia  
Barb and Norb Graves  
Linda Hepler  
Susan and Glenn Mesaros  
Christine Moeller  
Karen Newland  
Lesa Piech  
Ms. Eileen M. Quinn  
Ms. Patricia Sapusek  
Jodie Spradlin  
Cathy and Tom Szajko  
Lillian and John Trytko  
Mr. and Mrs. Terry Wolownik

**In Memory of Betty Ann Sebok**  
American Legion Post 50  
Elaine I. Kleva and Family  
Anne Schmitz

**In Memory of Frederick (Fred) Charles Shafer**  
G. Anderson  
Mr. and Mrs. Michael Anderson  
Peter Anderson  
Mr. and Mrs. Paul J. Vandewalle

**In Memory of Tyler James Shafer**  
G. Anderson  
Mr. and Mrs. Michael Anderson  
Peter Anderson  
Mr. and Mrs. Paul J. Vandewalle

**In Memory of Veda C. Shafer**  
The Lugbill Family  
Alyssa (Lugbill) and Steve Mezsick  
Mr. Glen D. Shafer

**In Memory of William A. Shaffer**  
Norma L. Shaffer

**In Memory of Shirley A. Shaw**  
Mr. and Mrs. Daniel L. Brekke  
Judy and Don Findlay  
Mr. and Mrs. Richard T. Jones  
Anne and Dave Karr  
The Kusnierek Family  
Sue and John Netto  
Mr. and Mrs. Brett A. Sanders  
Mr. and Mrs. William B. Wargo

**In Memory of William J. Shellen**  
Somers Square East Homeowners Assoc.

**In Memory of Charles (Fred) Fredrick Sheneman**  
Niles Haunted House Scream Park  
Mr. and Mrs. Randy Sheneman

**In Memory of Barbara P. Shephard**  
Dr. William and Nancy Kavadas Shephard

**In Memory of Robert M. Sherman**  
Beverly Quick

**In Memory of Carolyn E. Shidaker**  
Ms. Evelyn Penrod

**In Memory of Shkeep (Skeeter) Siade**  
Ms. Kathy Kenna  
Mr. and Mrs. Dale Schultz  
Ron Thomas

**In Memory of Joseph Simeri**  
Rosemary and Marquis Anderson  
Anonymous  
Mr. and Mrs. Dennis Artusi  
Ms. Gloria S. Campanale  
CRS  
Donna and David Freeman  
Mr. and Mrs. Casey P. Heying  
Al Jablonski  
Teresa and Sam Jermano  
Georgia R. Nolen  
Irma and Richard Schultheis  
St Joseph Valley Assoc Plumbing Heating  
Cooling Contractors  
Teachers Credit Union  
The Source Company

**In Memory of Wilma A. Simons**  
Mr. and Mrs. Robert J. Krempec

**In Memory of Jacqueline (Jacquie) Ann Singleton**  
Veronica and Greg Singleton

**In Memory of Sharon K. Six**  
Jane and Glen Hefner

**In Memory of Vera R. Slack**  
Bruce R. Slack

**In Memory of Mary Jane Sloboda**  
Ms. Betty Baker

**In Memory of Karen A. Sloma**  
Lori and Mike Kerr

**In Memory of Michael D. Smiechowski**  
Wilma, Eugene, and Joe Smiechowski

**In Memory of William (Bill) J. Smiechowski**  
Wilma, Eugene, and Joe Smiechowski

**In Memory of Loretta Smigielski**  
Kathy Thornton

**In Memory of Richard Smigielski**  
Kathy Thornton

**In Memory of Anasue Smith**  
Pat and Bob Sloan

**In Memory of Dolores JoAnn Smith**  
Judy and Daniel Strzelecki  
Jane Strzelecki  
Lucille Strzelecki  
Debbie and Bob Strzelecki  
Marguerite Williams  
University of Notre Dame

**In Memory of James M. Smith**  
Mr. and Mrs. Jeffery C. Hatfield

**In Memory of Louise Mary Smith**  
Reverend and Mrs. Max L. Hatfield  
Marilyn and Jim Senour

**In Memory of Margaret E. Smith**  
Mr. Charles T. Smith

**In Memory of Marjorie Ann Smith**  
Mr. and Mrs. Jeffery C. Hatfield

**In Memory of Raylena J. Smith**  
RACO, Inc.  
Linda and Jerry Zach

**In Memory of Stanley H. Smith**  
Hoosier Racing Tire Corp.  
Mary and Don LaPlace

**In Memory of Thomas Bruce Smith**  
Donald G. Smith

**In Memory of Walter (Mike) Michael Smith**  
Iva Clark  
Ann and James Davis  
Betty and Jerry Hummel  
Eileen and Lewie Reed  
Sue Shields  
Ann and Lee Zumbaugh

**In Memory of Carol (Joan) Snider**  
Karen Geisler

**In Memory of Christian Jay Snyder**  
Eileen Wright

**In Memory of Eilene Ruth Snyder**  
Pat and Frank Criniti

**In Memory of Clement (Clem) R. Solmos**  
Mrs. Adeline J. Solmos  
Ms. Jody L. Solmos

**In Memory of Marilyn Solomon**  
Barbara and Robert Bauters  
Kathy Bucher  
Sue and Bruce Cybulski  
Sandy and Nick DeCicco  
John Geiger  
Jo Luther  
Mr. and Mrs. James H. Monserrez  
Jim "Sol" Solomon  
Nancy J. Townsend  
Don Wagenblast  
Mary Ann and Tom Wozniak

**In Memory of Wayne E. Sousley**  
Junelle Miller

**In Memory of Sparazynski Family Members**  
Ruth and Stanley Sparazynski

**In Memory of Blanche J. Spillman**  
Mr. and Mrs. John C. Myers

**In Memory of William (Bill) J. Spillman**  
Mr. and Mrs. John C. Myers

**In Memory of Virginia (Ginger) L. Springer**  
American Culinary Federation  
Helen Watts-Brown and Curtis Brown  
Joann Frederick  
Mr. and Mrs. Charles Hartman  
Mr. Douglas Hartman  
Kathy and Paul McFann  
Ms. Joy M. Miller  
Sue Root  
Mr. Paul D. Whitson  
Joan Wilson

**In Memory of Joanne C. Springer**  
Mr. and Mrs. Michael Kinney

**In Memory of Thomas (Tom) D. Stanton**  
Mr. and Mrs. Chris Griffin  
Jackie and Frank Hayes  
Ellie and Mel Olinger  
Mrs. Deborah S. Smith

**In Memory of Bert Stauffer**  
Lawrence L. Garber

**In Memory of Priscilla J. Steif**  
Mr. Fred Steif

**In Memory of Lois A. Steinke**  
Susan Ceglarek  
Sue and Bruce Cybulski  
Jackie Gearhart

**In Memory of Nancy A. Sterchi**  
Trish Bonnot  
Lori and Chuck Kelly  
Dorothy Rose  
Joan Straup  
Sandy Straup  
Janet and Steve Wendt

**In Memory of Doug Sterritt**  
Anonymous

**In Memory of Thomas (Thom) L. Stewart**  
Sharon Glassford  
Annette and Kevin Johnson  
Norma and Ora Lane  
Marcia (Skinner) Link  
The Needham Family  
Helen and Willard Peters  
Julia and Ted Pflugner  
Jeanne M. Riley  
Janice M. Roden  
Mr. and Mrs. Gary H. Stoll  
Kathy and Tom Vance

**In Memory of Ralph A. Stickley**  
Isabel Stickley

**In Memory of Luella Jane Stine-Christman**  
Mr. Donald Dutoi  
Mr. and Mrs. Gene Dutoi  
Ms. Janice Dutoi  
Chris Stine and Family  
David Stine and Family  
Pam and Lon Stine  
Mary Lou and Lowell Stine  
Susan Stine  
Mr. and Mrs. Gene Wagner

**In Memory of Valerie Lynn Stitt**  
Mrs. Debra D. Acrey  
Ms. Carmen Baldoni  
Joan Deal  
Ideal Consolidated, Inc.  
Mr. and Mrs. James C. Parker  
Washington Clay Class of 1950

**In Memory of Mary F. Stoeckinger**  
Mary and Bill Carleton  
Joyce Stebbins

**In Memory of Judith (Judy) Ann Stoll**  
Frank Grabner

**In Memory of Mary Jane Stopczynski**  
Jessica and Shane Stopczynski

**In Memory of Elaine E. Storey**  
Ms. Joan M. Storey

**In Memory of Carol A. Strang**  
Anonymous  
Kathy and Rod Beer  
Peggy and Don Bucher  
Mrs. Judith Butler  
Mr. and Mrs. Phil Campbell  
Doris and Robert Chokey  
Pat Clem  
Dewart Lake Lane 12, Friends and Neighbors  
Friday Night Friends—Lois Beer, The Elliotts,  
Kirkdorffers, Neffs, Rassiss, Sommers  
Sharon and Jim George  
Betty and Merle Griffin  
Phyllis and Jim Heckaman  
Peg and Erle Hunsberger  
Jeannine and Randy Klotz

Fay and Larry McDonald and Family  
 Donna and Dick Mishler  
 Mr. and Mrs. Lowell Rassi  
 Gloria Dawn Suter  
 Linda and Larry Thompson  
 Eleanor Watkins  
 Jane and Tom Watkins  
 Carol L. Wentz  
 Virginia and Mike Wyland  
  
**In Memory of Dennis (Shorty) R. Streetman**  
 Doug's Alignment and Complete Service  
  
**In Memory of Edward M. Streffling**  
 Gloria and Fred Tansey  
  
**In Memory of Esther S. Streffling**  
 Gloria and Fred Tansey  
  
**In Memory of Terry Keith Strickland**  
 Shari Ruston  
  
**In Memory of Deborah Ann Strotter**  
 Mr. Joseph H. Strotter  
  
**In Memory of Douglas L. Stump**  
 Eldonna Beck  
 Jessica Leatherman  
 Jane and Thomas Maran  
 Cindy Marte  
  
**In Memory of Marcus (Joe) J. Sult**  
 Mr. and Mrs. Robert A. Ralph  
  
**In Memory of Virginia Sult**  
 Mr. and Mrs. Robert A. Ralph  
  
**In Memory of Ralph (Art) Arthur Suter**  
 Mr. and Mrs. James D. Lipa  
  
**In Memory of Mary (Mary Lou) Louise Swantz**  
 John Swantz  
  
**In Memory of Sharon A. Swingendorf**  
 Mr. and Mrs. H. S. Henderson  
 Ms. Mary Stanfield  
  
**In Memory of Shirley Jean Symon**  
 Jean N. Bojtor  
 Maureen and Bill Bradley  
 Joan Chamberlin  
 Lorraine Crandall  
 Carol and Hans Ditsch  
 Paul B. Glass, DDS  
 Jeff Logan  
 Etta and John Logan  
 Mr. and Mrs. Scott A. Pullin  
 Dorothy Starzynski  
 Walnut Grove Mutual Housing Corp.,  
 President and Board of Directors  
  
**In Memory of Steve L. Szakacs**  
 Elizabeth Szakacs  
  
**In Memory of Andrew (Andy) Szalay**  
 Heidi Walker  
  
**In Memory of Christine Theresa Szalay**  
 Mrs. Margaret K. Beres

**In Memory of Julius J. Szalay, Jr**  
Heidi Walker

**In Memory of Constance (Connie) K. Szlanfucht**  
E. J. Szlanfucht

**In Memory of Lena R. Szoke**  
Kathleen and William Kane

**In Memory of Kazimiera Szumial**  
Joan Christopher Crovello  
Drs. Mary E. and A. Philip DePauw

**In Memory of Frank (Bill) J. Szynski**  
Mr. and Mrs. Phillip T. Kingery

**In Memory of Virginia (Ginny) Tait**  
Ruby Eileen Borem  
Mr. and Mrs. Wayne P. Stutsman  
Leola Wiseman Family—Pat, Janet, Betty,  
Debbie and Families  
Karen and Charles Youngman

**In Memory of Helen Joan Tarr**  
Patti and Matt Pletcher

**In Memory of Edna Louise Taylor**  
Barbara Szabo

**In Memory of Kenneth Lyle Taylor**  
Barbara Szabo

**In Memory of Lawrence F. Taylor**  
Susan Taylor

**In Memory of Irmgard Maria Tervooren**  
Mrs. and Dr. T. Gruszynski

**In Memory of George L. Thomas**  
Mrs. Mary E. Naquin

**In Memory of Janet I. Thomas**  
Mr. Fred R. Warstler

**In Memory of Mildred Thomas**  
Peg Sromberg

**In Memory of William Thomas**  
Shelia and Phil Kennedy

**In Memory of Marjorie Tincher**  
Ms. Paula J. Howell

**In Memory of Paul Tincher**  
Ms. Paula J. Howell

**In Memory of Edward J. Tock**  
Dianne Shevetz

**In Memory of LeRoy E. Toner**  
Ronda and Tom Pennell  
Helen Prikosovich  
Standing Chapter 13 Bankruptcy Office,  
Trustee Debra L. Miller  
Geraldine Toner and Family

**In Memory of Norma Jean Topping**  
Ms. Joan Hartman  
Marcy and Alan Mangus

**In Memory of Cynthia Torres**  
Brandon, Lisa and Michael Weissner



In Memory (continued)

**In Memory of Guadalupe Torres**  
The Ricardo Torres Family

**In Memory of Irene M. Toth**  
Ella J. Frederick

**In Memory of Stephen Traphagan**  
Mr. and Mrs. Robert Freedenberg  
Mr. Paul J. Gray

**In Memory of Elmus R. Tripp**  
Mr. and Mrs. Steven J. Evans

**In Memory of Constance (Connie) Joan Troeger**  
Mrs. Betty Dodge Beckman

**In Memory of Maxine Trowbridge**  
Mrs. Marilyn Gochenour

**In Memory of Edward (Ed) Troyer**  
Mr. and Mrs. Troy Snider

**In Memory of Jeff Uhitt**  
Christmas Commandos

**In Memory of Lamar Upshaw**  
Judy Borysiak

**In Memory of Audrey E. Vagner**  
Jan and Doug Bucha  
Catherine E. Coleman  
Ms. Christine H. Elliott  
Sondra and Howard Engel  
Mary P. Hartman  
Rita and Moses Johnson  
Margaret and Robert Lewis  
Mr. Frank Leyes  
Dr. and Mrs. James M. Moriarity  
Becky Moskewski  
Mr. and Mrs. Harold Notzinger  
Ken Titera  
Angie and Allan Vagner  
Marie Weiss  
Kathy and Tom Whitman

**In Memory of Eleanor K. VanDerHagen**  
Pam and Don Bouffard  
Miss Irene Carnazola  
Ms. Kathy Kenna  
Mrs. Mary M. McBride  
Sharon and Douglas Rider  
Mr. and Mrs. Dale Schultz  
St. Mary's Lunch Club

**In Memory of Joyce E. Vanderhegghen**  
Elaine M. Gulas  
Steve Rospopo

**In Memory of Clara Marie VanDeVeire**  
Charles VanDeVeire and Family  
Jan and Ron VanDeVeire

**In Memory of Reva L. VanHarlingen**  
Reva Moody

**In Memory of Irene Elizabeth VanLue**  
Selge Construction Co, Inc.

**In Memory of Richard (Dick) W. VanNevel**  
Mr. and Mrs. Michael R. VanNevel  
Connie Wong

**In Memory of Edna L. VanNote**  
Doris Truyaert

**In Memory of Rene VanOverberghe**  
Veronica VanOverberghe

**In Memory of Margaret VanParis**  
Dr. and Mrs. Richard C. Buck  
Nadine and Dave Collier  
Mr. and Mrs. Paul T. Gorski  
Kaye and George Mahalick  
Jean Nelson  
Sara and Art Niedbalski  
Ms. Connie L. Smidt  
Evelyn Tatay  
Marcia Vargo  
Norma A. Wilson

**In Memory of Theresa F. Vargo**  
Marcia Vargo

**In Memory of Albert F. Verduin**  
Dr. and Mrs. Wallace B. Eberhard

**In Memory of Martha I. Vervynckt**  
Jane and Ed Baert

**In Memory of Myong (Mona) Sue Vest**  
Mr. William P. Grace  
Mr. and Mrs. James Vest

**In Memory of Floyd Wachowiak**  
Mr. and Mrs. Raymond McQueen

**In Memory of Mary Stella Wachowiak**  
Mr. and Mrs. Raymond McQueen

**In Memory of Betty J. Wachs**  
Andrea and John Alexander  
The Mark Danielson Family  
Mr. and Mrs. Richard Ellis  
Rick Heck  
Carlton E. Kindig, Jr  
James S. Kindig  
Roxanne and John Pallo  
Dee and Frank VanDeVeire  
Dori and Bob Weber  
The Zimmerman Family

**In Memory of Monte L. Wade**  
Susan L. Penn

**In Memory of Wyn Craig Wade**  
Susan L. Penn

**In Memory of Barbara Ann Wagner**  
Zita E. Szilagyi

**In Memory of Thomas Walenga**  
Mr. and Mrs. James Walenga

**In Memory of George H. Wallace, III**  
Vicky Nix and David Klink

**In Memory of Sharie C. Wallick**  
Frank Booth  
Lena H. Lyvers  
Ms. Rita L. Weisweaver

**In Memory of Ethel M. Wallman**  
Mr. and Mrs. Scott B. Moore

**In Memory of Ray Wallman**  
Mr. and Mrs. Scott B. Moore

**In Memory of Dorothy Walters**  
Mr. and Mrs. Clem J. Walters

**In Memory of James (Jay) Hackett Walton**  
Mr. John C. Lenox

**In Memory of Virginia Wantuck**  
Mr. Robert Ambrose  
Family of Charlene and Frank Bralick  
Mr. and Mrs. Darrell Crane  
Mr. and Mrs. Robert Downs  
Judy Everett  
Mr. and Mrs. Richard Stewart  
Mrs. Cynthia C. Watson

**In Memory of Dwight J. Ward, Sr**  
Rosemary Gillen  
Yvonne and Cliff Haines  
The Lang Family  
Faith McGarvey  
Charles G. Nimon  
Jill and Rob Wilson

**In Memory of Frances J. Ward**  
Ms. Betty Baker

**In Memory of Betsy Watkins**  
University of Notre Dame

**In Memory of Debbie Weaver**  
Mr. and Mrs. Robert F. Gibson

**In Memory of Harley E. Weirich**  
Sharon Baer  
The Hasty Family

**In Memory of Joel M. Welch**  
Mr. Richard L. Armstrong  
Jane and Doc Atkins  
Barnes & Thornburg, LLP  
Mr. Roy L. Beck  
Ms. Julie A. Becknell  
Peggy and Dean Birzele  
Nancy and Wilber Boren  
Linda and Chuck Borneman  
Barbara Boss  
Bunny and Tom Chester and Family  
Mr. and Mrs. Ernie A. Cox, Jr  
Crowe Horwath, LLP  
Mary Pat and Bob Deputy  
Jackie and Keith Dougherty  
Elcona Country Club  
Sara and Tom Elkin  
Sandy and George Fortino  
Paige Jellison  
The Tom Jellison Family  
Karen Judd  
Diane and Tim Krill  
Mary Lee and Joseph LaPara  
John H. Lloyd, III  
Jane and Jim Mack  
Paula and Ian Mercer  
Ms. Doris I. Miller  
Judy and Britt Murphey  
Karen and Dan Oakley  
Barbara and Duane Peterson  
Sharon Poole  
Karry and Ken Quarandillo

Mr. and Mrs. Terry J. Rodino  
Marilyn and Bob Ronk  
Karen K. and Kelly L. Rose  
Judy and Jim Stringfellow  
Mr. and Mrs. Kenneth K. Stuff  
Sue and Francis Terrell  
Wendy and Greg Thorne  
Holly and Scott Troeger  
Waypoint Community Church  
Mr. and Mrs. R. Duane Welch  
Welch Cleveland Team

**In Memory of Charles (Chuck) J. Weldy**  
Anonymous  
Grace Heckaman

**In Memory of Robert (Bob) E. Wensits**  
Mr. and Mrs. Tim Berkshire  
Mr. David A. Giszewski  
Frank Grabner  
Mr. and Mrs. Robert G. VanArsdale

**In Memory of Helene Evelyn Werner**  
Marge and Al Hepler  
Phyllis and Harold Kabay  
Erika and Gunter Kison  
Wanda Miller

**In Memory of Richard J. Wesolowski**  
Glenda and Donald Stanley  
Peggy Wesolowski

**In Memory of Helen Wess**  
Kay and Ross Stanton

**In Memory of Mark R. Whybrew**  
Alice Scully  
Leighann Whybrew

**In Memory of Rosalie (Rose) Wickey**  
Mr. James Wickey

**In Memory of Thomas (Tom) R. Widmer**  
Mr. Len Buszkiewicz  
Family Pet Health Center, Doctors and Staff  
Debbie Kruyer  
The Merkle Family  
Kay and Jerry Schultz  
Marcile Sellers and Susan Hurst  
South Bend Community School Corporation,  
Intern Staff and Drivers  
Jeanette and Larry Taylor  
Mrs. Karen E. Wallis

**In Memory of John Wilhelm, Jr**  
Tonia and Bryan Albright  
Mrs. Janice M. Allsop  
Cynthia McLean Benedict  
Naomi Ford  
Carolyn and Louis Frick  
Phyllis and Phil Grove  
Tammy and Todd Proctor  
Mr. Macario Soto  
Karen and Rich Warner  
Ruth and Larry Wilhelm

**In Memory of Charles O. Williams**  
Jean Ann and Norm Beem  
The Tod Brems Family  
Gayle K. Clement

Ms. Dawn K. Cook  
Nancy and Brian Dixon  
The Mike Keller Family  
Mr. and Mrs. Edward Krill  
Betty Peddycord  
June Stull  
Karyn and Trent Upchurch  
Michael Wager

**In Memory of Stanley P. Wills**  
Bonnie and Edward Banas  
Carol and Norm Bone  
Paul Duda  
Christine and Joshua Fischer  
Janet Futa  
Kathy and Paul Futa  
Mr. and Mrs. Jason A. Gean  
Josephine Goralski  
Mr. and Mrs. Dennis Janowiak  
Jean and Lennie Kapalczynski  
Kay and Jim Kryder  
Delphine Lytell  
Kathy and John Seidl  
Pat and Rod Seifer  
Kim and Matt Selis  
Ruth and Stanley Sparazynski  
Mr. James Taylor  
Carla and Craig Vining

**In Memory of Howard W. Wilsberg**  
Mr. and Mrs. James M. Nothstine

**In Memory of Betty J. Wilson**  
Dr. and Mrs. Wallace B. Eberhard

**In Memory of Karen Lee Wilson**  
Ms. Kathleen M. Coryell  
Mr. and Mrs. Daniel R. Popielski  
Patti and Scott Solmos  
Suzanne and Jon West  
Laurelle and Steve Wilds

**In Memory of Lester L. Wilson**  
Sue and Jim McGee

**In Memory of Wiletta Wilson**  
David A. Reinhold

**In Memory of Lucinda (Cindy) Wingett**  
Julie and Gregg Annis and Family  
Larry Annis and Family  
Anonymous  
Pat Blount and Family  
Mr. and Mrs. Patrick N. Downey  
Mr. Melvin F. Jones  
Sandy and Dave Lawton  
Mr. and Mrs. Eric Lueffling  
June Smith

**In Memory of Gertrude Winkiewicz-Ritchie**  
Rita Bauwens  
Mr. and Mrs. Robert Vandygriff

**In Memory of Marilyn Wirick**  
Mrs. Nadine E. Burgoon

**In Memory of Edward J. Witucki**  
Mr. and Mrs. Brian D. Lutz

**In Memory of Bert Wojtasik**  
Patricia Dembinski  
Mr. and Mrs. Edward Radecki

**In Memory of Gladys Wojtasik**  
Patricia Dembinski  
Mr. and Mrs. Raymond A. Dembinski  
Theresa Lichnerowicz  
Mr. Rey Nied  
Linda Niedbalski  
University of Notre Dame  
Mr. and Mrs. Ralph T. Wituski

**In Memory of Dorman R. Wolff, Jr**  
Braun Engineering Employees

**In Memory of Toshiko Wolff**  
Micki and Walter Benninghoff  
Elizabeth and Ron DeWinter  
Sarah and Don Feldman  
Mr. and Mrs. Robert E. Geisler  
James Mitchell  
Joan and Blackie Motts  
Mr. and Mrs. Lloyd Racine  
Sherline Robinson  
Mr. and Mrs. Paul W. Schaefer, Jr  
Mr. and Mrs. William F. Wilson  
Friends of Gary Wolff and Family

**In Memory of Irvin L. Wood**  
Wanda J. Wood

**In Memory of Ellen Loraine Woodruff**  
Mr. and Mrs. Robert D. Fein  
Ms. Lonnie Peppler-Moyer

**In Memory of Louise Eileen Woods**  
Mr. Glenn L. Woods

**In Memory of Ernest Don Wotasik**  
Mr. and Mrs. Edward Radecki

**In Memory of Bonita L. Wozniak-Traczyk**  
Ms. Rose Adams

**In Memory of John A. Wroblewski**  
Dr. Gary M. Sunada

**In Memory of Joseph J. Wroblewski**  
Karen Wroblewski

**In Memory of Barbara Yoder**  
Mr. and Mrs. Troy Snider

**In Memory of Robert R. Yonkers**  
Mr. and Mrs. Dale E. Roher

**In Memory of Claude John Zakrocki**  
Helen J. Trippel

**In Memory of Hildegard Zakrzewski**  
Carol Hayes

**In Memory of Raymond L. Zehner**  
Carol and Paul Zehner

**In Memory of Alexander (Big Al) Zielinski, Jr**  
Carroll and John Bowman  
Mrs. Judith L. Zielinski

**In Memory of HoneyLou Ziemendorf**  
Mr. Brent Watson

**In Memory of Donna Belle Zook**  
Evelyn Kelley

Honor Listing

**In Honor of Joanne Aldridge**  
Phyllis Kaminski

**In Honor of Nancy and George Badgero**  
Mr. and Mrs. James A. Bock  
Jennifer Hershberger

**In Celebration of Patrick J. Baert's Birthday**  
Jane and Ed Baert

**In Celebration of Debbie and Rick Carter's Purchase of a New Home**  
Mrs. Laurie M. LaDow

**In Honor of Marjorie S. Deahl**  
Mr. Dick Deahl

**In Honor of Patricia A. Dembinski**  
Mr. Rey Nied

**In Honor of Margie L. Denning**  
Julianne L. Dunham

**In Honor of Valorie J. Eads**  
Ms. Stacy Eads  
Mr. Todd Eads

**In Honor of Ed Everett and Kitty Rose**  
Mr. and Mrs. David L. Everett

**In Honor of Thomas (Tom) J. Everett**  
Mr. and Mrs. David L. Everett

**In Honor of Betty Z. Farekas**  
Stephen E. Farekas

**In Honor of Nanette and Walter Gundt**  
Chris and Chris Gregory

**In Honor of the Long Life Together of Carolyn and Julius Halasz**  
Mary T. Treanor

**In Honor of Annissa Hambouz**  
The David Rachels Family

**In Honor of Michael Hambouz**  
The David Rachels Family

**In Honor of Mr. and Mrs. Clyde Hayes**  
Mr. and Mrs. John Pillow

**In Honor of Catherine S. Hiler**  
The Daniel Luck Family

**In Honor of Mr. and Mrs. Timothy J. Hollingsworth**  
Mr. and Mrs. David L. Everett

**In Honor of Wynona S. Jones**  
Dr. and Mrs. Lem Moye'

**In Honor of Michael Lekarczyk of Industrial Metal Fabrication, Inc.**  
LL Geans Construction Co.

**In Honor of Charles Leone of East North Shore Properties, LLC**  
LL Geans Construction Co.

**In Honor of Mike McLoughlin of K & M Machine**  
LL Geans Construction Co.

**In Celebration of the Marriage of Lisa and Jon Marshall**  
Pam and Chas Hartman  
Mr. and Mrs. Craig Kirkwood  
Mrs. Sharon A. Marshall

**In Honor of Richard (Moe) P. Morrison**  
Mrs. Betty J. Morrison

**In Honor of Joseph Peters**  
Ms. Shirley A. Wight

**In Honor of Sunday School Teacher, Beth E. Pinkerton**  
First United Methodist Church

**In Celebration of the 80th Birthday of Carmel Marie Sallows, CSC**  
Ms. Susan M. Kostielney

**In Celebration of Jean Savage's Birthday**  
Ms. Dianne L. Andrews  
Mrs. Elizabeth F. Lattanner  
Mrs. Mila F. Pierce  
Ruth Story

**In Honor of Barbara Kubiak and Barry Schleiger**  
Ms. Marguerite J. Micucci

**In Honor of Frances E. Shearer**  
Mary Kay and Larry Fegel  
Margaret "Peg" Maupin

**In Honor of Shayla L. Smith**  
Donald G. Smith

**In Honor of the Wedding Guests of Chelsie Mann and Timothy Sharp**  
Chelsie and Tim Sharp  
Mr. and Mrs. John M. Parisey

**In Honor of Carl Thomas of K & M Machine**  
LL Geans Construction Co.

**In Honor of Ken Little of Woodcox Building Contractor, Inc.**  
LL Geans Construction Co.



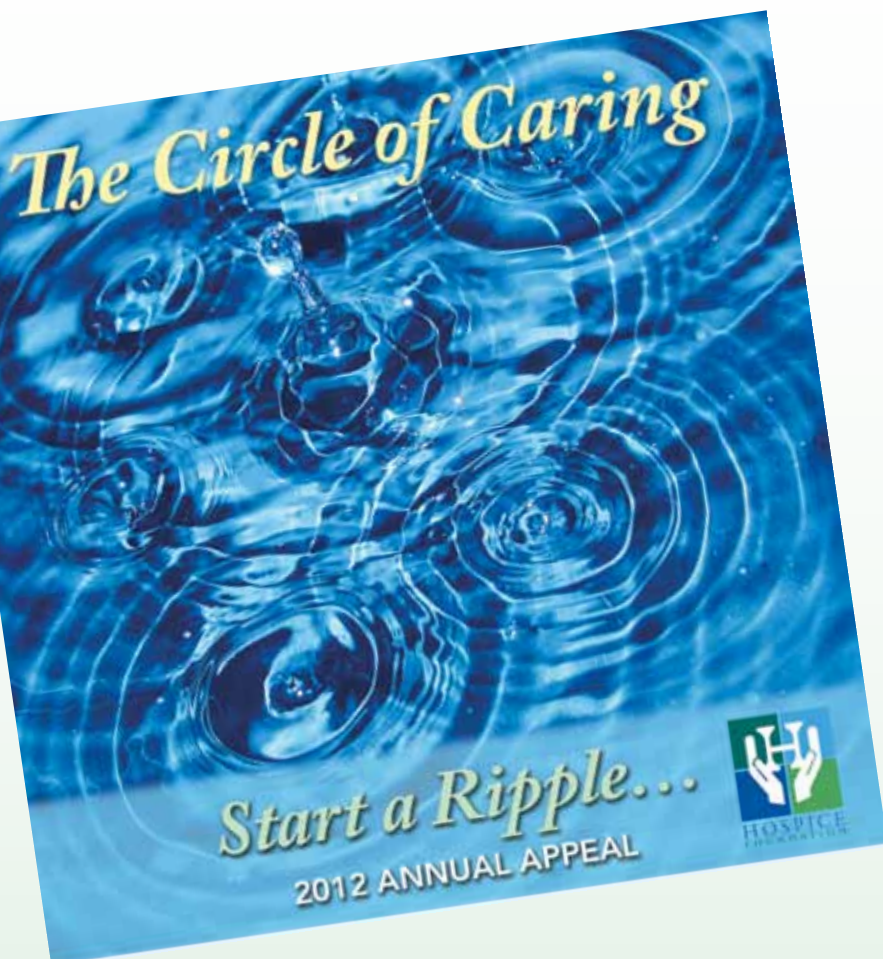


HOSPICE  
FOUNDATION

SUPPORTING CENTER FOR HOSPICE CARE  
SOUTH BEND • PLYMOUTH • ELKHART  
4220 EDISON LAKES PARKWAY, SUITE 200  
MISHAWAKA, IN 46545

Nonprofit  
Organization  
U.S. Postage Paid  
South Bend, IN  
Permit #376

## *Annual Appeal 2012 – Start a Ripple*



Thanks to many generous donors, Center for Hospice Care and Hospice Foundation's 2012 Annual Appeal, The Circle of Caring: Start A Ripple, has reached nearly 90% of its ambitious \$95,000 goal. Funds raised through the Annual Appeal go to ensure that no patient in need of hospice services will ever be turned away, regardless of their ability to pay.

Start a ripple of caring of your own. No gift is ever too large or too small to make a difference in the lives of those facing a serious, life-limiting illness. Help us reach our goal and be part of the Circle of Caring. You can make a donation at [www.centerforhospice.org/2012-annual-appeal](http://www.centerforhospice.org/2012-annual-appeal).

