



CROSSROADS

FOR FRIENDS OF HOSPICE

WINTER 2013

The Past, Present and Future of Compassionate Care



Center for
Hospice Care



First Bike Michiana for Hospice



New Mishawaka Campus



First Helping Hands Award Dinner



HOSPICE
FOUNDATION

A NOTE FROM WITHIN

PAST. PRESENT. FUTURE.

In ancient Roman mythology Janus, for whom January is named, is the two-faced god who looks to both the past and the future. It seemed appropriate for us to do so in this issue as well.

As we build the future Center for Hospice Care Mishawaka Campus we look forward to having a facility that will allow us to provide better service to our patients and their loved ones. Not only will the new facility allow us to be better stewards of our financial resources by eliminating the need for leased space, it will also give us the ability to host events such as our Walk for Hospice and Cycle at Sunset. It will have room for Circle of Caring events, as well as other recognitions and celebrations.

For those in our community who have lost a loved one, even those with no prior connection to Center for Hospice Care, our Bereavement Center will offer a variety of bereavement programs to educate and support people experiencing grief. Bereavement programs are available at no charge to anyone in the agency's service area. It will also house the Center's After Images Art Counseling Program, which provides a unique opportunity for individuals to explore grief issues through a creative, expressive counseling experience.

It is also appropriate to look back at the solid foundation provided by our 33-year history of providing compassionate care for those with serious, life-limiting illnesses. No matter what else has changed since we admitted our first patient in January of 1980, the ideal of providing a self-directed, pain-free, dignified end-of-life experience for our patients has not. Nor has our team-oriented approach to meeting the patient's needs and providing support for his or her loved ones.

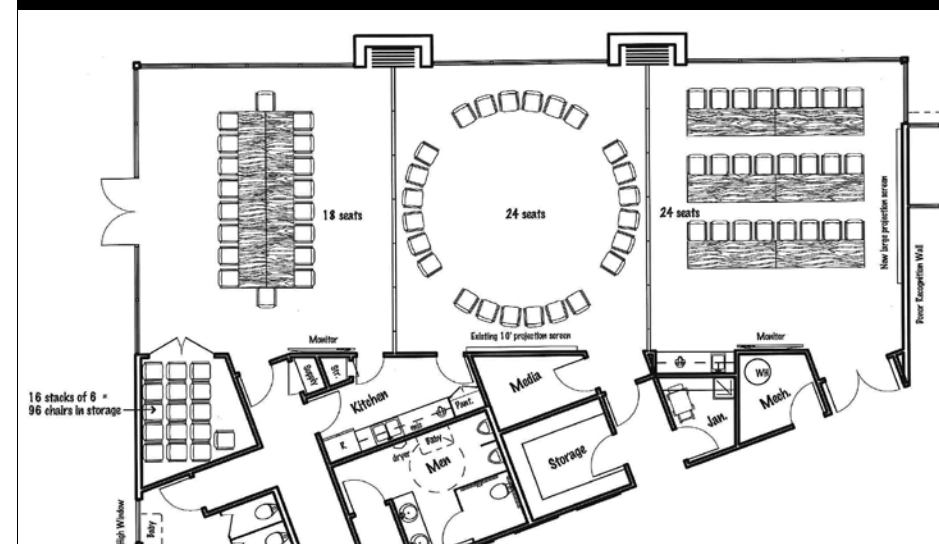
We look forward to the challenging – yet bright – future as we continue to build on our history of improving the quality of living for our patients and their families.



Michael J. Wargo
Chief Operating Officer



Above: Hospice office on Cedar St. in South Bend that opened in 1984.
Below: Floor plan for a building in the new Mishawaka Campus, set to open in 2013.



Board of Directors

Catherine Hiler, Chairman
Corey Cressy
Amy Kuhar Mauro
Terry Rodino
Rita Streffling

Officers

Mark Murray, President/CEO
Mike Wargo, COO
Karl Holderman, CFO

Contributors

Nora Crosen
Caron Gleva
Lisa Kelly
Denis Kidde
Scott Leonard/Valentinos
Cyndy Searfoss
Cheryl Thomas
Mike Wargo
Jim Wiskotoni



HOSPICE
FOUNDATION

www.FoundationForHospice.org

©2013 The Hospice Foundation

CONTENTS WINTER 2013

p16-19 The Past, Present and Future of Compassionate Care

Center for Hospice Care

p12 29th Annual Helping Hands Award Dinner Honoring Ann Manion – “Celebrating Life”

A LOOK BACK

- p4 4th Annual Bike Michiana for Hospice Exceeds Expectations
- p5 Why I Ride... “Hospice was There for Us”
- p6 Okuyamba Fest: A Movie. A Mission. A Way to Help.
- p7 Compassionate Partnerships Bring Palliative Care to Where it's Most Needed
- p8 27th Annual Walk for Hospice Offers Friends and Family an Opportunity to Remember Loved Ones
- p9 Ground Breaking Ceremony Marks Official Kick-Off of Mishawaka Campus
- p10 A Camp for Healing

ON THE HORIZON

- p13 Compassion Knows no Borders: Internships in Uganda
- p14 Choose to Care – Join the Circle of Caring
- p15 Calendar

HEART OF HOSPICE

- p20-21 Donor Profile
Dot Weikamp
- p22 Community Corner
- p23-25 Circle of Caring
- p26-39 In Memoriam
- p39 Honor Listing

A LOOK BACK

STORIES AND ACTIVITIES FROM THE PAST QUARTER

4th Annual Bike Michiana for Hospice Exceeds Expectations



The sun rose on a chilly day the morning of September 16th, only to give way to a sunny, warm, and overall beautiful day for the 4th annual Bike Michiana for Hospice. A record 974 riders enjoyed the great weather as they rode through the city of South Bend, the rolling hills of southwest Michigan, past vineyards, and even up to Lake Michigan on the longer routes.

Support and gear stops brought riders to Pinhook Park, Elbel Golf Course, Free Run Cellars Winery, Weko Beach and Spicer Lake Park. Each SAG featured food from some of the area's finest restaurants, including Indulgence Cafe, Yesterday's, Fiddler's Hearth, Grand Mere Inn and LaSalle Grill, as well as live entertainment. St. Patrick's County Park was once again the staging area for the event, as well as host to the after-ride party featuring food from Corndance Tavern and entertainment by Alligator Blackbird.

Riders were encouraged to fund raise for Center for Hospice Care as part of the ride. This year incentives such as riding jerseys, shirts and socks were offered for reaching certain fund raising levels. Fund raising for this event totaled over \$26,000, far exceeding the goal!

Plans for next year's event are well under way. The 5th annual Bike Michiana for Hospice will take place on Sunday September 15, 2013. Online registration will begin early in 2013. Visit our website at www.bikemichianaforhospice.org or like us on Facebook for up-to-date information.



Top Left: A group of cyclists ride past one of the many vineyards in southwest Michigan.

Middle Left: A small sample of the food available to the riders at the Free Run Cellars SAG stop.

Bottom Left: Riders pull into the SAG stop at Weko Beach, led by several members of the Spin Zone riding group.

Top Right: What better way to celebrate a successful ride than with a toast among friends?

Bottom Right: Alligator Blackbird provided the entertainment at the after-ride party.

Why I Ride... "Hospice was There for Us"

For many of the 974 cyclists who took part in this year's Bike Michiana for Hospice, it was a great day to get out on a bike and ride for a good cause. For others, it was a way to give back to an organization that had been there for a loved one at a time when care and support was most needed.

In 2011, Bruce Foster rode in his first Bike Michiana for Hospice. "I'd never really ridden before but I thought I could do the 40-mile ride," he said. That year, he rode in memory of his wife Sandy, a Center for Hospice Care patient who passed away on December 17th, 2010. "I wanted to take care of her myself," he said, "but towards



Photos of Bruce Foster's mother and wife, both CHC patients, adorned his jersey for this year's Bike Michiana for Hospice event.

the end, I needed help and they were there with the equipment, the supplies, everything. They told us what to expect through the process and made everything more comfortable for me and my daughters."

His mother helped his 2011 fundraising efforts by getting pledges and money. "She got about \$1,500," he said. In April that year, she became a CHC patient after a heart attack and a diagnosis of congestive heart failure. "The caregivers were awesome. They had such a good relationship with her." After she passed away at Thanksgiving 2011, Bruce decided to take his commitment to Bike Michiana for Hospice to the next level. He bought a new bike and began training over the winter in anticipation of riding the 100-mile route. "I didn't know if I could do it, but decided to go for it."

He also decided to give raising \$5,000 for the ride a shot as well. "I figured if my mom could raise \$1,500 for my ride then I should give it a shot." His shot hit the mark and then some. With the help of family and friends around the country, Bruce raised \$6,330.

Eric and Mark Streeter rode the longest route of the event – 125 miles – in memory of their father, Will Streeter, an avid cyclist who was a CHC patient. Will Streeter passed away in April of 2012 from ocular melanoma. Up until two weeks before his death he was working on the design of the cycling jersey his sons (and other supporters) would be wearing.

Will's philosophy was to have a plan for getting from Point A to Point B but the biggest part of the ride was the trip in between. He passed that



Eric and Mark Streeter, along with their cousin Seth, sport the jersey their father designed for their 125-mile ride.

along to Eric and Mark. "It's definitely about the experience," Mark said. "Being first isn't the important thing, it's about doing something."

And for all those who did something by riding in memory of a loved one, by raising funds to support Center for Hospice Care and Bike Michiana Coalition, by volunteering or by being part of the event, we offer our thanks. Special thanks also go to top fundraisers Rex Brown, Denise Flueckiger-Wisti, Mary Hedman, Donald Renfro and Jason Stratton for their support.

If you have a story to share about why you rode in this year's Bike Michiana for Hospice, we'd love to hear it. You can email it to [Cyndy Searfoss](mailto:Cyndy.Searfoss@centerforhospice.org) at searfoss@centerforhospice.org or post it on our Facebook page, Bike Michiana for Hospice.

Okuyamba Fest: A Movie. A Mission. A Way to Help.

Inaugural World Hospice and Palliative Care Day Event Raises Funds for PCAU



World Hospice and Palliative Care Day, which began in 2005, is now celebrated in more than 70 countries around the world. In South Bend, the Hospice Foundation held its inaugural celebration on October 11th at the Center for History/Studebaker Museum by hosting a screening of the short documentary *Okuyamba*. The event also featured a silent auction of local art and Ugandan craft items, and reception featuring a selection of international foods, wines and beers. More than 75 people were part of the festivities.

The event is the outgrowth of a partnership between Hospice Foundation/Center for Hospice Care and the Palliative Care Association of Uganda (PCAU). In 2009, Rose Kiwanuka, country director for PCAU, came to the US to share her mission to ease the pain and suffering of AIDS and cancer patients dying deep in the rural villages of her country. To share her story and support

her work, the Hospice Foundation produced *Okuyamba*, the Lugandan word meaning, “to help.”

Denis Kidde, International Programming Representative for Hospice Foundation, was part of the question and answer session following the screening. A Uganda native and former eight-year employee of the African Palliative Care Association (as well as Rose’s son), Denis was able to offer a unique perspective regarding the need for palliative care in Uganda.

“It was gratifying to see so many people interested in learning more about World Hospice Day and particularly PCAU,” said Mike Wargo, Hospice Foundation COO. “Once people see *Okuyamba* and understand the need in Uganda, the support they offer is amazing.”

Revenue from the evening totaled \$10,176.44 and benefits FHSSA (Foundation for Hospices in Sub-Saharan Africa) and PCAU’s building fund.



Compassionate Partnerships Bring Palliative Care to Where it’s Most Needed

It’s a country the size of Oregon, with a population that’s ten times greater. The median age is 15; life expectancy is 52. In many of the remote villages, the ratio of doctors to the general population is one to 50,000. Uganda has one radiotherapy machine, located in Kampala, in the southern part of the country. Patients who are able to afford therapy must be able to purchase food and find a place to stay for the 8-10 weeks of treatment and have at least one family member with them to care for them.

This is the backdrop to the work of the Palliative Care Association of Uganda (PCAU). PCAU’s mission is “to promote and support affordable and culturally appropriate palliative care throughout Uganda.” One of the greatest challenges is having enough

health care workers licensed to prescribe morphine in each of the country’s 137 districts. Currently there are 160 trained palliative care providers for the entire country, located in 50 of the districts.

In 2008, Center for Hospice Care/Hospice Foundation was linked to PCAU through an innovative partnership initiative developed by FHSSA (formerly Foundation for Hospices in Sub-Saharan Africa). This partnership led to the development of the employee-funded Uganda Impact Fund to support PCAU. Through this fund, Center for Hospice Care (CHC) and Hospice Foundation employees have helped to support a number of important programs. One such program has involved supporting 11

students the past three years as they go through the nine-month Clinical Palliative Care Course offered by Hospice Africa Uganda. Plans are underway to expand the program to as many as 10 students in 2013.

Sadly, one of the program’s first graduates died during a recent Ebola virus outbreak. Clare Muhumuza and her four-month-old daughter were victims of the deadly disease, which Clare contracted while nursing a family infected with an undiagnosed case of Ebola. CHC and Hospice Foundation staff members join those at PCAU in offering the Muhumuza family their condolences on the loss of Clare and her daughter.

To learn more about the PCAU and CHC/Hospice Foundation partnership, visit www.foundationforhospice.org/partners.



Front row from left to right: Carol Nabuwufu, Administrative Assistant, IHPCA; Martha Kyoshaba, Academic Registrar, IHPCA; Dianah Basirika, student from Hospice Jinja, Jinja district; Antoinette Baganayabo, student from Kisoro district; Rose Kiwanuka, Country Director, PCAU. Back row from left to right: Dr. Dorothy Adongo, Academic Programs coordinator, IHPCA; Mike Wargo, COO Hospice Foundation, Indiana USA; John Alex Muyita, Deputy Principal, IHPCA; Tumwesigye Ambrose, student from Ibanda district; Kikansa Racheal, student from Buyende district; Amoris Jane Okoth, student from Tororo district; Joni Virginia, student from Moyo district. The students are those currently funded by Hospice Foundation.

27th Annual Walk for Hospice Offers Friends and Family an Opportunity to Remember Loved Ones

It was a chilly fall morning on the last day of September, 2012, when over 50 stalwart Walk for Hospice volunteers arrived at Newton Park in Lakeville. The commitment the executive committee members had shown by meeting for months prior to the walk to make sure everything would go smoothly was evident. It was also apparent that each volunteer, and especially the participants of the event, were all there to thank Center for Hospice Care for the support and care their loved ones received during their final days.

By early afternoon the venue was ready, the walkers had signed in, the band, "J.T. and the Bare Essentials," was playing lively music; the crowd of more than 400 was welcomed by the CEO of Center for Hospice Care, Mark Murray, as well as MC Paul Emmick, Chief Meteorologist for WSBT. Sparky the Clown, the entertainer children look forward to each year, twisted his one-of-a-kind balloon sculptures and University of Michigan student volunteer Cassandra Kelly discovered a unique talent for face painting. Virginia Olson, professional massage therapist and yoga instructor, led the crowd in warm up exercises before bag piper Leonard Sailor, who has generously donated his time year upon year, piped over 330 walkers onto the first steps around the one-mile path. We are grateful to Leonard for making such an effort to fit Walk for Hospice into his schedule again this year.

While participants walked, volunteers had the opportunity to look at the memory wall where sentiments and photos of loved ones had been posted by those in attendance. They also shared

their own stories of how the care provided by CHC had helped their families. Those moments of personal connection caused one new volunteer from Marian High School, Garrick Meyers, to remark, "Helping at the walk was great. I had the opportunity to not only meet new people, but also support families that may have lost a loved one or need hospice services now. If you're a student and your school promotes community service hours, this is a great event to do. It's busy, fun, you move from task to task, interact with walkers and other volunteers and raise money for a great cause as well."

Groups of volunteers such as Ivy Tech respiratory care students Christina Boettcher, Michael Beyler, and Michelle Dewey along with groups of walkers such as the large contingent from Urey Middle School were also key elements to making the 27th Annual Walk for Hospice a success. With almost 400 walkers and volunteers in attendance, over \$31,000 was raised to help CHC provide hospice services to anyone who needs them, regardless of their ability to pay.

The walk will be in a new location along the Mishawaka Riverwalk and will have a new date in the summer of 2013 to coincide with the completion of CHC's new riverfront home. The 2013 Walk for Hospice committee, led by Chair Nick Korody of Service Printers, is excited about planning next year's walk and invites you to volunteer to be part of the fun! Watch for news in the Spring 2013 *Crossroads* or contact Lisa Kelly at KellyL@CenterforHospice.org for more information.



Ground Breaking Ceremony Marks the Official Kickoff of New Mishawaka Campus

The foundation of the buildings that will house Center for Hospice Care's administrative staff, Life Transition Center and Hospice Foundation personnel served as the background for a ceremonial ground breaking on October 16. The new campus will be located along the northern bank of the St. Joseph River in Mishawaka, just west of Cedar Street.

Mike Wargo, COO of Hospice Foundation, and Jeff Rea, President and CEO of the Chamber of Commerce of St. Joseph County explained how Rea, then mayor of Mishawaka, first approached CHC about the possibility of locating the campus along the river. Dignitaries picked up the golden shovels and symbolically broke ground on the campus.

Following the ceremony a reception was held across the river at Mishawaka River View 500. As attendees enjoyed hors d'oeuvres and refreshments, Mark Murray, President/CEO of CHC, Catherine Hiler, Chairman of the

Hospice Foundation Board of Directors, Dave Wood, Mayor of Mishawaka and Sheral Anderson, representing Congressman Joe Donnelly's office, spoke of the importance of CHC from their own vantage points. They shared stories ranging from the growth of the organization and how the new campus is important to that growth, to the indelible mark the services provided leave on the patients they serve and their loved ones.

Once completed, the new campus will bring together three separate offices under one roof, aiding in work flow and also saving the organization thousands of dollars each month.



Top: The ceremonial golden shovels are ready for the ground breaking.

Bottom: Dignitaries for the ceremonial ground breaking included (from left to right) Brad Sechrist, Vice President Helman Sechrist Architecture; Corey Cressy of Grubb & Ellis | Cressy & Everett and CHC Chairman-elect; Jeff Rea, President/CEO of the Chamber of Commerce of St. Joseph County; Dave Wood, Mayor of Mishawaka; Mike Wargo, COO of Hospice Foundation; Catherine Hiler, Chairman of the Hospice Foundation Board of Directors; Mark Murray, President/CEO of Center for Hospice Care; Terry Rodino, Chairman of the Center for Hospice Care Board of Directors; Jeff Helman, President of Helman Sechrist Architecture;

A Camp for Healing

At first glance, Camp Evergreen seemed like a traditional Midwestern summer camp, complete with the requisite lake, rustic cabins and 60 or so shrieking campers. On the basketball court, a boy skied a shot and his teammates cheered. Nearby, some campers leaned against the wall chatting. A girl executed a series of cartwheels. Before the weekend was over, there were campfires, s'mores, horses, kayaking trips, fishing, games, crafts and memory-making ceremonies.

Only when you see the colorful rubber bracelets around campers' wrists, imprinted with the words "Camp Evergreen," and learn that a blue band indicates a camper who has lost his or her parent, a green band a grandparent, a yellow band a sibling, do you realize something is different. Camp Evergreen is the only camp of its kind in Northern Indiana, a camp for grieving children and teens who have suffered the loss of a significant person in their life, where idle chatter about cell phones, sports, music and crushes blends with conversations about the death of their loved one, the isolation they often feel and how the activities and group meetings help the campers find a sense of community among other campers struggling with similar grief concerns.

A volunteer, or “buddy” as they are usually called, quickly surmises that the most important details lay in getting a consensus from the group regarding which activity should be chosen for the first period of the day. Basketball? Fishing? Swimming? Craft boxes? Kayaking? Horses? Campers, who are enthusiastic about taking part in every activity, create the need for a great deal of negotiating, planning and problem solving on the part of the campers and their buddies.

Problem solving within peer groups is just one of many coping skills tackled head on with fun challenges. One example is on the ropes course. The activity consists of a board resting over a large log, much like a teeter-totter, and the teens need to plan an efficient, safe way to get all

team members on board. As many campers discovered, the task seems easy until gravity gets involved! Campers then may move on to the high adventure (guided) ropes course. For many campers, working up the courage to complete a route through the course provides a tremendous boost of confidence that is helpful as they explore their grief and learn to manage their feelings alongside other kids facing the same issues.

The buddies have the opportunity to explore the same high-ropes course prior to the arrival of the campers for the weekend. Finding courage and stamina to complete the course in the face of great anxiety was a lesson for the buddies about how the campers feel facing each day after the death of their loved one. Sharing grief and growth experiences with the campers makes the time spent fishing, canoeing, and creating art as a buddy even more meaningful. Most Camp Evergreen volunteers return year after year and wouldn't miss the opportunity to "buddy up" with the campers that need a weekend of fun camp activities to feel, as one stated, "less alone."

The importance of volunteers was underscored when Director of Camp Evergreen Holly Farmer remarked “I am so grateful for our volunteers and Camp Evergreen would not be possible without them. Volunteers generously give their time, their attention and they are someone who will listen when the campers choose to talk. Campers can receive tremendous benefit from the relationship with their volunteer, but I often hear from the volunteers that they receive from the campers more than they feel they have given. The parents and guardians of the campers are also very appreciative of our volunteers and the first memory often shared with them after camp is about their volunteer.”

This year's Camp Evergreen will be June 7-9. For registration or volunteer information contact Holly Farmer at 574.255.1064 or FarmerH@centerforhospice.org.

2 Organizations
1 Mission
Improving the
Quality of Living

Through its support of Center for Hospice Care, The Hospice Foundation helps patients and their loved ones experience the best possible quality of living regardless of healthcare insurance or an ability to pay.

- Hospice
- Home Health
- Grief Counseling
- Community Education

Caring for patients in Elkhart, Fulton, Kosciusko, LaGrange, LaPorte, Marshall, St. Joseph and Starke Counties in northern Indiana.



 Center for
Hospice Care

choices to make the most of life



HOSPICE
FOUNDATION

To learn more or self-refer, call anytime. 800.HOSPICE (467.7423) or CenterForHospice.org



Top: Volunteer Alice with her youth camper as he works on his memory box.

Middle Left: Each year at the end of Camp Evergreen an evergreen tree is planted as part of the remembrance service.

Middle Right: Volunteer Jean with a volunteer from Triple C Horseback Riding and her youth camper as he rides a horse.

ON THE HORIZON

FUTURE EVENTS AND HOSPICE HAPPENINGS

29th Annual Helping Hands Award Dinner

Honoring Ann Manion – “Celebrating Life”

This year’s Helping Hands Award Dinner will honor Ann Manion, volunteer president of Women’s Care Center. The theme, “Celebrating Life” was selected in recognition of Ann’s work at Women’s Care Center as well as in recognition of Center for Hospice Care and its dedication to improving the quality of living.

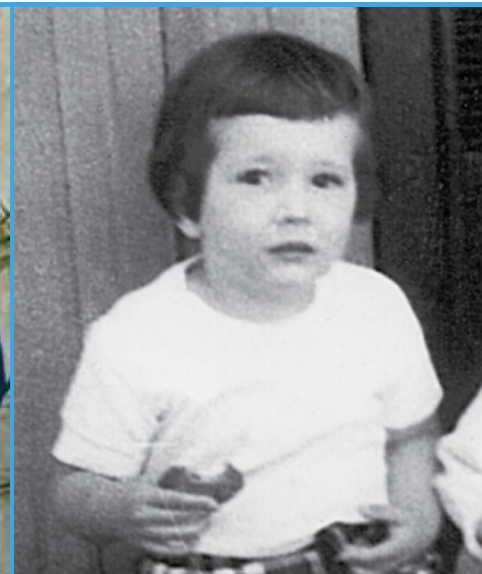
Since it began in 1985, the Helping Hands Award Dinner has honored an individual, couple or family who demonstrates civic and charitable stewardship to improve the quality of living in the communities served by Center for Hospice Care. The award recognizes the recipients for exhibiting generosity, outstanding community

achievements, direct financial support or by motivating others to give. Through her work at Women’s Care Center, Ann has positively impacted the lives of thousands of people in Elkhart, LaPorte, Marshall and St. Joseph Counties in Indiana.

The 2013 dinner will be held on Wednesday, May 1st at the Hilton Garden Inn South Bend, beginning with a cocktail reception at 6 pm. Dinner will begin at 7 pm, in the Fleur de Lis Ballroom.

Reservations for the dinner are now being accepted and can be made online at www.centerforhospice.org/hhad13. For more

information on the event please contact Lisa Kelly at KellyL@centerforhospice.org or 574.243.3119.



Compassion Knows No Borders

Internships in Uganda

As part of FHSSA’s (formerly Foundation for Hospices in Sub-Saharan Africa) Partnership Initiative, Center for Hospice Care (CHC) was linked with Palliative Care Association of Uganda (PCAU) in 2008. The goal of the partnership is to strengthen the health care system in Uganda by providing education, training, mentorship and support to ensure consistent standards for Palliative Care (PC). It also supports advocacy at all levels to strengthen collaborations and networking among PC providers, as well as promoting the formation of PCAU district branches to ensure that support is readily accessible to all PC professionals in locations close to their workplaces.

One of the key elements of the partnership is to organize internships in Uganda for Notre Dame students in both palliative and spiritual care. This ongoing program has been made possible thanks to support from the Kellogg Institute for International Studies.

Hanna O’Brien, a College of Science Pre-Professional Studies and Anthropology double major at Notre Dame, was the first palliative care student intern to Uganda during the summer of 2010. She returned in 2011. The Institute also funded spiritual care internships

for Notre Dame Master of Divinity students Ben and Mary Ann Wilson in 2011.

Other internship opportunities with PCAU for pre-medical, social work, nursing, spiritual care, psychology, education and other students from recognized academic institutions are in the development phase. Students will be placed in member organizations with established PC services in Uganda which are located across the country. These sites will provide an opportunity to obtain practical experience as well as reinforce or “test” their personal values. Available sites include: Hospice Africa Uganda, Mobile Hospice Mbarara, Little Hospice Hoima, The Mildmay Center, Hospice Jinja, Hospice Tororo, Hospice Ngora, Hospice at Home Amura, Kagando Hospital Palliative Care program, Arua Regional Referral Hospital, Kitovu Mobile Palliative Care program and Kawempe Home Care program. Interns will be placed according to objectives of their field of study, the needs of the intern, as well as the need of the hosting organization.

To learn more about internship opportunities in Uganda, contact Denis Kidde, International Programs Representative for the Hospice Foundation at 574.277.4860 or kidded@centerforhospice.org.



ON THE HORIZON

FUTURE EVENTS AND HOSPICE HAPPENINGS

Choose to Care – Join the Circle of Caring

After five years, our Circle of Caring continues to reflect the warm, generous spirit that is a hallmark of our community. Thanks to our donors' benevolence, Hospice Foundation can fulfill the promise of providing medical, spiritual

and emotional support to all those in need – regardless of their ability to pay. Each Circle of Caring member receives benefits based on annual cumulative giving levels.

Chairman Circle

\$10,000

- Private breakfast, lunch or dinner with President/CEO and COO
- Two tickets to the 29th Annual Helping Hands Award Dinner on May 1, 2013*
- A VIP event invitation
- Year in Review publication
- Recognition in *Crossroads* quarterly magazine

President's Society

\$5,000

- Exclusive annual lunch for President Society members
- Two tickets to the 29th Annual Helping Hands Award Dinner on May 1, 2013*
- A VIP event invitation
- Year in Review publication
- Recognition in *Crossroads* quarterly magazine

Helping Hands Society

\$1,000

- Two tickets to the 29th Annual Helping Hands Award Dinner on May 1, 2013*
- A VIP event invitation
- Year in Review publication
- Recognition in *Crossroads* quarterly magazine

Heart of Hospice Club

\$500

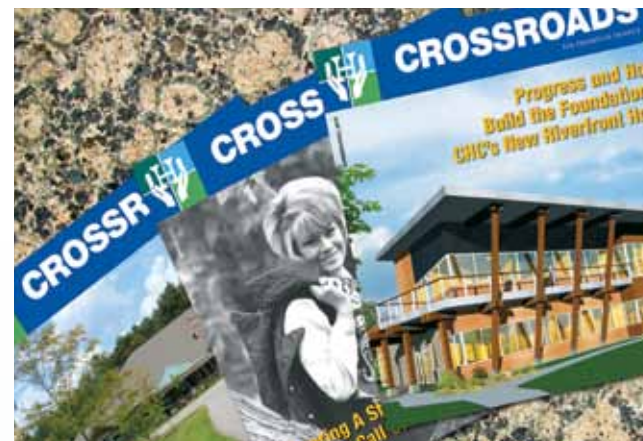
- A VIP event invitation
- Recognition in *Crossroads* quarterly magazine

Caregiver's Alliance

\$250

- Recognition in *Crossroads* quarterly magazine

*Complimentary tickets will be provided to those who join or renew their membership by January 31, 2013



Hospice Foundation Calendar of Events

We look forward to your participation in and support of these important events. Please check our web site, www.foundationforhospice.org, for more information and event dates throughout the year.

February 2013

- National Community Relations Month

March 2013

- National Social Worker's Month
www.naswdc.org
- **March 3-9**
Patient Safety Awareness Week
www.npsf.org
- **March 30**
National Doctor's Day
www.doctorsday.org

April 2013

- **April 14-20**
Volunteers Week
- **April 16**
CHC Volunteer Recognition Luncheon
- **April 25-28**
NHPCO Management & Leadership Conference
www.nhpc.org

May 2013

- **May 1**
Nurses Day
- **May 1**
Helping Hands Award Dinner

June 2013

- **June 7-9**
Camp Evergreen
- **June 10**
National CNA Home Health Aides Day

2013
calendar

August 2013

- **August 11**
Walk for Hospice
www.walkmichianaforhospice.com

September 2013

- **September 15**
Bike Michiana for Hospice
www.bikemichianaforhospice.com

Find us on:



YouTube



The Past, Present and Future of Compassionate Care

Center for Hospice Care

Approximately 150 people can share the claim that they were instrumental in forming the organization that has since become Center for Hospice Care (CHC). The time was the late 1970s and there was growing interest in a new concept called hospice care. The idea had come to New Haven, Connecticut via Great Britain in 1974. Four years later, six organizations in St. Joseph County were working together or on parallel tracks to found an organization locally to provide specialized care for those in need of hospice care. The articles of incorporation for Hospice of St. Joseph County, Inc. were filed in June 1978. The dues were \$2 per member. In January 1980, the first patient was served.

“If you look back at the minutes of those early board meetings, it was

a shaky start,” said Mark Murray, current President / CEO of CHC. “Like many non-profits, it’s somewhat amazing we survived.” By the end of the first year, using some staff loaned from other healthcare organizations, the organization had served 29 patients.

From those 29 patients in a single county, the number of people and the area served by CHC has grown significantly. Last year, the organization served 1,866 patients in Elkhart, Fulton, Kosciusko, LaGrange, LaPorte, Marshall, St. Joseph and Starke Counties from facilities in South Bend, Mishawaka, Elkhart and Plymouth.

By number of patients served, Center for Hospice Care ranks in the top 5% of the more than 5,500 hospice programs in the US. On an annualized basis from 1980 through 2012, CHC

served 24,545 patients. Nearly 30% of those were served in the past four years alone.



Tom Burzynski hosts an open house at the new CHC office on Cedar Street in 1984.

Murray traces the organization’s growth to three significant events. “We opened our Plymouth location in 1995 and it was the first time we went outside St. Joseph County – the first time we ‘went across the street,’ as it were. It was the result of being invited there by people in the community.”

Ownership of a South Bend facility, and the first Hospice House in the area in 2006, is the second such event. The third was having the Elkhart General Hospital hospice program given to CHC in 2005, which increased census to a size that warranted building a new Elkhart-based facility in 2008, which includes a second Hospice House.

He also points to the fact that CHC is not a newcomer in the hospice world. “We are a legacy provider. We were the first in our area and the second hospice provider in the state of Indiana,” he noted. “We have not been afraid to grow through expansion into other counties.”

He added that other key factors in the organization’s progress are “the terrific relationships and support

“Hospice care is almost universally loved. Our approval rating locally is between 98-99% – name any other industry with that kind of rating. The only negative we hear is that people wish they knew earlier about the care and support CHC can offer or that they had called sooner.”

- Mark Murray

we have received from the local medical community. From the start, local hospitals referred their patients to us rather than begin their own hospice programs. We have had the financial support of the community as



John Krueger, MD, Hospice Medical Director (l), and Tom Shaw, Volunteer Chairman of the Board (r), present Michael DeCicco with the 1995 John E. Krueger, MD, Hospice Caring Award.

well, which has allowed us to grow and meet the needs of our patients whether they had insurance or not.”

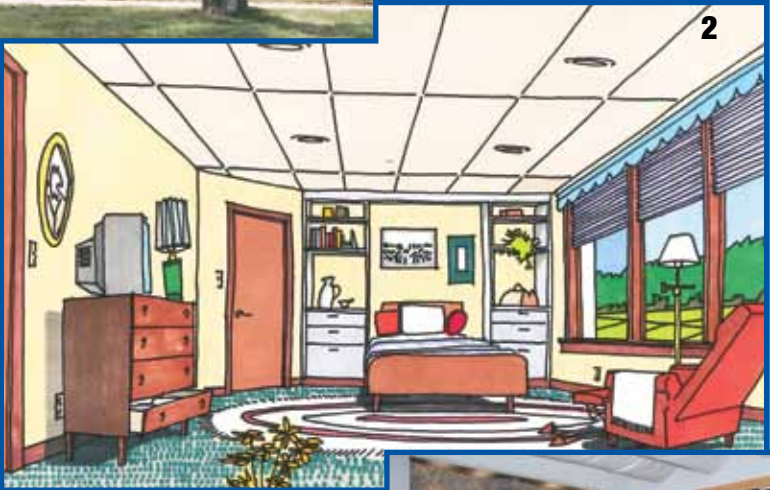
From the beginning, CHC made the promise that no one eligible for hospice services would be turned away – regardless of their ability to pay. Diligent financial management of agency resources, fundraising events and donor support has allowed that promise to be kept, even in challenging financial times.

Challenging – or at least unpredictable – financial times are something Murray sees continuing as healthcare/human services organizations such as CHC ready themselves for the changes wrought by healthcare reform, including anticipated Medicare cuts. “The question is going to be how much the cuts will entail, when and how often,” Murray noted. “We know for sure that we will be reimbursed less for what

continued on page 18



1. Exterior of the Cedar Street office.



2. Rendering of a patient room in the Roseland Hospice House.

3. Spiritual room of the Roseland Hospice House.

4. Rendering of the exterior of the Elkhart County Hospice House.

5. Exterior of the Elkhart County Hospice House.



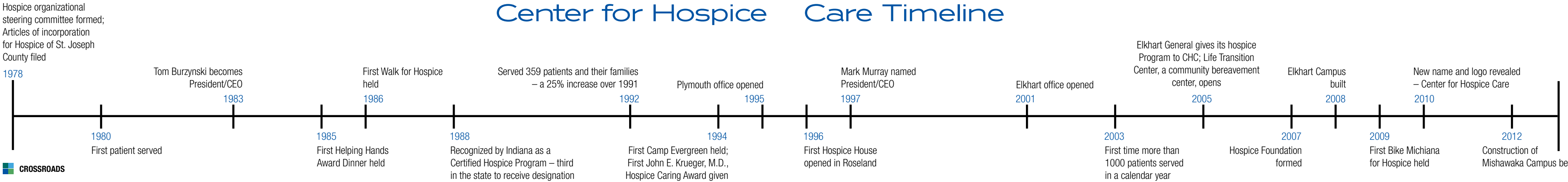
4



3



5



we already do very efficiently,” he said. “Numerous studies show that hospice care actually saves taxpayer money under Medicare.”

These cuts come as hospice care usage is seeing tremendous growth. In 2011, 1.65 million people were hospice patients and 44.6% of all deaths occurred while the patient was in hospice care.

“Hospice care is almost universally loved,” Murray noted. “Our approval rating locally is between 98-99%. The only negative we hear is that people wish they knew earlier about the care and support CHC can offer or that they had called sooner.”



Pat and Don Cressy are awarded the 2001 Helping Hands Award for their service to our community.

In hospice care, as in so many things, timing is everything. Generally speaking, hospice care is available to patients whose life expectancy – given the normal course of their disease – is six months. The objective is to make the most of that time. In many cases, managing the patient’s pain and other symptoms gives them the ability to enjoy activities with family and friends. But in a culture that encourages its members to “fight the good fight,” “don’t give up,” “keep battling to the end,” and encourages life-prolonging treatment, “the acceptance of hospice care is sometimes seen as admitting defeat,” Murray stated. “Even though we get there within hours of a referral, one of the saddest things we see are the patients who die before they can even be admitted to hospice care. These are people who could have benefitted from our care but weren’t able to.”

Sound financial management, strategic planning and implementing new approaches to care that benefit patients help assure that CHC will be able to provide skilled, compassionate care for those facing serious, life-limiting illness in the future.

Mark Murray, President/CEO Center for Hospice Care



In 2012 Mark Murray became the longest-tenured President / CEO in the history of Center for Hospice Care, his 15 years just surpassing that of his predecessor, Tom Burzynski who held the position for 14. “It doesn’t seem like it’s been that long,” Murray said, although he notes that he’s now been CEO for 47% of the organization’s history and an employee for 74% of its existence.

If those statistics give you the idea that Murray is something of a numbers guy, you’d be correct. He can quote copious amounts of data relating to CHC and national hospice trends. He served a two-year term as the Chairman of the Board of Directors for the National Hospice and Palliative Care Organization (NHPCO) from January 2011 thru December 2012 and has been integral to the organization’s work during that time.

NHPCO is the oldest and largest membership organization representing hospice and palliative care programs in the US. Its members care for more than 90% of the nation’s 1.65 million hospice patients (figures as of 2011). In addition to his role as NHPCO chair, Murray has been involved in an 11 member group of hospice CEOs from across the U.S. called the National Hospice Executive Roundtable sharing best practices, which has benefited CHC. “I have ‘stolen’ ideas

with impunity,” he said with a smile. “I have taken, without guilt, ideas and service lines other organizations have found successful. They have also gladly copied ideas from us.” He went on to explain that this is a key purpose of the Roundtable and “we have been able to bypass the pilot stage on some important initiatives already knowing that they work. In the end, our patients benefit greatly from all this.”

He likens his role at CHC to an orchestra conductor. “I don’t play any of the instruments. I’m not out there doing what they do,” he said referring to the agency care staff. “Working as a team, it all comes together to give our patients and their loved ones remarkable service.” It’s not exactly on target with his original high school career goal of going to USC and studying cinematography.

Instead, he obtained a degree in public and corporate communications from Butler University, leading him to a career in marketing, advertising and broadcasting.

Murray found the idea of “selling a product that no one wants” irresistible and joined what was then Hospice of St. Joseph County, Inc. as Director of Community Relations and Fundraising and became vice president within six months. Despite the changes and challenges offered by the hospice and palliative care industry, one thing that has remained consistent is the satisfaction he receives from reviewing surveys completed by patient family members. “I save those for Fridays. No matter what kind of week it has been, reading these make it all worthwhile. The feedback is profoundly positive. Overall, we have a satisfaction rating of 98% - it’s incredible.”

He attributes those ratings to staff and the level of care they give every patient, every family member. It’s something he can now relate to on a personal level. “I have worked in the hospice industry since 1990, but it was 23 years before I was actually with someone when they died,” he said. “Until my mother passed away peacefully last June, I hadn’t gone through that. She was our patient I can say, without a doubt our staff’s dedication is second to none.”

Mishawaka Campus Update



Thanks in part to a dry, warm fall construction on the first phase of the new Mishawaka campus is progressing well. Footings and foundation for the new 24,000 square foot facility were completed in December, with steel set in January.

Phase I consists of two buildings, connected by a main entry area. The western building will house the Life Transition Center, its art counseling program and bereavement counseling staff on the first floor. The Hospice Foundation will be located on the second floor.

The eastern building will provide offices for administrative, information technology, human resources, accounting, billing,

and marketing/community relations departments.

“We are on schedule to complete construction and begin moving in at the end of June,” reports Hospice Foundation Vice-President and COO, Mike Wargo.

Remodeling work is also progressing on the campus’ Guest House. Build-out of the former Edgewater Florist building, which is being transformed into a new Palliative Care Center, begins later this month and is expected to open this summer.

Top: A rendering of the completed buildings as they will look from the river walk area.

Middle: The foundation for the western building can be seen overlooking the St. Joseph River. Also the elevator shaft rises above the foundation.

Bottom: Excavators continue to work to clear the area of dirt to prepare for further construction.



HEART OF HOSPICE

HOSPICE INVESTMENT AND DONATION INFORMATION

Donor Profile: Dot Wiekamp

“We were always interested in investing in the community and worthwhile organizations,” recalls Dorothy (Dot) Wiekamp of herself and her late husband Darwin (Dar), who passed away in 2008 at the age of 94. “And hospice means a great deal to so many people.” Remembering her own sister Mary’s experience as a Center for Hospice Care patient during her final days, Dot noted that those who cared for Mary were so very helpful throughout that time and she and her late husband have supported CHC ever since.

Dar and Dot, as they affectionately became known to the community, have meant a great deal to so many non-profit organizations in Northern Indiana. They have been particularly devoted to the First United Methodist Church of Mishawaka (where Dot has been a member since birth). They provided funding for construction of the Center for Homeless, an auditorium at the Northern Indiana Center for History, Wiekamp

Hall at IU South Bend, the Bethel College Athletic Center, the Dorothy Wiekamp Demonstration Kitchen at Ivy Tech Community College and the Schwartz Wiekamp Medical Center in Mishawaka. But just as important as their philanthropy, they served on numerous boards throughout the area, giving of their time and talents to improve the quality of living in the community they loved.

The Wiekamps were an all-American love story and an all-American success story. Growing up during the Great Depression and from modest means, they built what was to become Valley American Bank, one of the region’s largest independent banks. “We had a lot of good things happen. And Dar did a lot of things right. He loved people and did right by them.”

She describes their background as solidly middle-class. “We were working people. As a teenager, I got a job and a paycheck – my first one was \$15 – so I came home and the first thing my grandmother told me was ‘now, Dot,

get a little purse and take \$1.50 out of it for giving back,’” Dot said. “I grew up and was given a wonderful life by my grandmother, grandfather and mother and was taught the need to share. Dar came from the same background, so it came naturally.”

And as they shared what they had received, both the Wiekamps experienced what Dot describes as the “joy of giving.” “When you give, you end up getting it all back,” she said. “Dar was very conscious of that. He didn’t give to get recognition or honors. That just wasn’t his nature.”

“I guess we are better givers than takers,” Mrs. Wiekamp noted, adding that she and her husband were very blessed to have “a tiny bit of the American Dream... and when we got, we shared it with everyone. No one does it by themselves... we had a lot of help,” she noted, pointing upward. “You do so many things,” she added, in reference to the couple’s philanthropic support, “but it’s not more than we are expected to do.”



Community Corner

The Hospice Foundation is grateful for the generosity of the many groups that support its mission through their independent fundraising efforts, grantsmanship and donations. Although we cannot recognize every effort, we are pleased to take this opportunity to recognize the following and thank all of those in the community who support our agency.

The Niles Haunted House Scream Park donated a portion of its 2012 proceeds totaling \$500 to CHC. In four years, the park has donated a total of \$2,450.

Christ the King Catholic Church donated \$400 to CHC to help with the care of our patients.

Due to Internal Revenue Service tax regulations, we may only issue written acknowledgement for donations made payable to and/or processed directly by Center for Hospice Care or The Hospice Foundation. Donations made and/or processed via a third party may not be eligible for a charitable tax donation. If you have any questions regarding charitable contributions, contact Mike Wargo, Chief Operating Officer, at 574.243.2059 or wargom@centerforhospice.org. For specific tax advice, you should visit the IRS website at www.irs.gov or contact your tax advisor.



St. Joseph Valley Street Rods

The St. Joseph Valley Street Rods club recently donated \$10,000 to CHC. The club members sold Barnaby’s Pizza coupons and passed on the proceeds to CHC. During the past two years, the club has donated a total of \$19,050 to support CHC’s work to improve the quality of living.

Miller’s Senior Living Community, an assisted living facility, donated \$415 - the proceeds raised from a hotdog fundraiser held to benefit CHC.

Kappa Kappa Kappa (Tri Kappa Culver Associate Chapter) donated \$20 to help our patients.

Delta Beta Phi – Epsilon Chapter donated \$100 to CHC.

1st Source Bank donated \$500 to CHC as a result of new employee accounts.

North Central Indiana Chapter of the National Association of Insurance and Financial Advisors

The 14th annual Joseph E. Smith Memorial Golf Outing, sponsored by the North Central Indiana Chapter of the National Association of Insurance and Financial Advisors (NAIFA), raised \$4,000 for CHC. Through 2012 the golf outing has raised \$72,100 to help care for CHC patients.



Sharon Smith, widow of Joseph E. Smith, Cliff Perras, past-President of North Central Indiana Association of Insurance and Financial Advisors (NCI-AIFA) and Kevin Grunawalt, president of NCI-AIFA, present the check to CHC.



Circle of Caring

To further our mission to improve the quality of living for those we serve regardless of one’s ability to pay, The Hospice Foundation implemented a donor giving program: Circle of Caring. Membership in the Circle of Caring entitles donors to benefits based on the level of the donor’s cumulative annual support. CHC and The Hospice Foundation express their appreciation and honor our members in the following societies:

Recognition in this issue covers gifts received from April 1, 2011 to October 31, 2012.

Chairman Circle
\$10,000 and above

- 1st Source Foundation
- Anonymous
- Anonymous
- Mr. Arthur J. Decio
- Elkhart General Hospital Foundation
- Mr. and Mrs. J. Edward French
- Mr. and Mrs. Steven L. Garatoni
- In Memory of Charles C. Hinds
- Memorial Hospital and Health Systems
- Mr. Mark M Murray
- NAIFA of North Central Indiana
- NIBCO Inc.
- Mrs. Ernestine Raclin
- South Bend Sodbusters Inc.
- St Joe Valley Street Rods
- Mr. and Mrs. Richard W. Streffing
- The Tire Rack
- University of Notre Dame - Public Affairs and Communication

- Ms. Anne M. Jordanich
- Mrs. Ernestine Kelsey
- Ladue Curran & Kuehn, LLC
- Lake City Bank
- Evelyn Major Fund
- McDonalds/KADA Partnership
- Michiana Hematology-Oncology, PC
- Dr. and Mrs. Samuel L. Milligan
- Mr. and Mrs. Christopher J. Murphy, III
- Mr. and Mrs. Philip A. Newbold
- Quality Dining, Inc.
- Robert J. Hilier Family Foundation
- Mr. and Mrs. Terry J. Rodino
- South Bend Medical Foundation
- South Bend Orthopaedics
- Dr. and Mrs. Kurt H. Stiver
- The Foundation of Saint Joseph Regional Medical Center
- Mr. and Mrs. Thomas F. Veldman
- Mrs. Jane J. Warner

- Mr. and Mrs. Joseph L. Blazek
- Mr. Jerry K. Border
- Ms. Charmaine Bradford
- Mr. and Mrs. Brian R. Brady
- “Bucky and the Liprippers”/Midway Tavern
- Mrs. Janette Burkhart-Miller
- Mr. Russell L. Busse
- Cafe Max, Inc.
- Cardiothoracic Surgery PC
- Carleton, Inc.
- Mr. LaVerne R. Carlson
- Mrs. Carol J. Case
- Cassady, Neeser & Brasseur
- Mrs. Jeanne Cassler
- Center for the Homeless, Inc.
- Mr. and Mrs. J. Christopher Chocola
- Club 15
- Ms. Linda Costas and Mr. Richard Phelps

- Mr. John A. Craigo
- Cressy & Everett Realtors, Inc.

Helping Hands Society
\$1,000 to \$4,999

- Aldridge Insurance
- Alick’s Home Medical
- Alliance for Catholic Education (ACE)
- America’s Farmers Grow Communities
- Osborn & Barr
- Andrew J. & Florence A Krizman Charitable Foundation
- Angels in Red 42266
- Anonymous
- Anonymous
- Anonymous
- Ansari Family Charitable Trust
- Dr. and Mrs. David L. Bankoff
- Barnes & Thornburg LLP
- Mr. Ronald L. Baumgartner
- Mr. Charles E. Bayman
- Mr. and Mrs. Brian E. Bell
- Mr. and Mrs. Dennis W. Beville
- Bill Deputy Foundation
- Dr. and Mrs. Frederick K. Dean
- Mrs. Josephine Dibley
- Diversified Realestate, LLC
- DJ Construction Co
- Mr. Ralph W. Dobson
- Mr. Kyle L. Dooley
- Mr. and Mrs. Bipin Doshi
- Dr. and Mrs. James DuCanto
- Mr. and Mrs. Corey E. Dukai
- Mr. and Mrs. Matthew E. Edmonds
- Judi and Jim Edmundson
- Ms. Carol Ann Mooney and Mr. George J. Efta
- Dr. and Mrs. Michael A. Englert
- Mr. Philip J. Faccenda, Sr
- Faegre, Baker & Daniels
- Mr. and Mrs. William C. Fenech
- Mr. Robert S. Ferency

- Ms. Elizabeth Ferlic and Mr. Nathan J. Lazenga
- Mr. Gavin Ferlic
- Susan and Tom Fischbach
- Joyce and Roger Foley
- Mr. Bruce J. Foster
- Dr. and Mrs. Rodney F. Ganey
- Mrs. Janet L. Garber
- Gates Automotive, Inc.
- Mr. Dale L. George
- Gerig Surgical Associates, PC
- Mr. and Mrs. Walter D. Gildner
- Grubb & Ellis/Cressy & Everett
- Gurley-Leep Automotive Group
- Mr. W. G. Hegg
- Mr. and Mrs. C. E. Hilier, Jr
- Mr. and Mrs. Larry Hilier
- Mr. and Mrs. Karl E. Holderman
- Mr. Jeff C. Holtzclaw
- Holy Cross College
- Indiana Trust & Investment Management Co.
- Indiana University Foundation
- Interlogic Outsourcing Inc.
- Intraco Corporation
- Mr. and Mrs. Scott M. Johnson
- Mr. and Mrs. Michael A. Joines
- Jordan Industries
- Mr. John W. Jordan, II
- Mr. Edward M. Jordanich
- Kash Family Fund
- Mr. James A. Kazmierczak
- Ms. Laurie K. Keenan
- Dr. and Mrs. James P. Kelly
- Ms. Lisa R. Kelly and Mr. Robert G. Douglass
- Mr. J. Paul Kendle
- Ms. Jill C. Kennel
- Mr. and Mrs. Donald T. Kindt
- Mr. and Mrs. David M. Krzyzaniak
- Dr. and Mrs. Jon B. Kubley
- Mr. and Mrs. Donald R. Kyle
- Lexus of Mishawaka

- Mr. John H. Lloyd, III
- Mrs. Barbara C. Lobdell
- Mrs. Lyla S. Lockhart
- Logan Community Resources
- Ms. Susan Mahler
- Ms. Kathleen Malone Beeler and Mr. Brian C. Regan
- Mr. and Mrs. David C. Martin
- Mr. and Mrs. John K. Martin
- Mr. and Mrs. Tom Mathews
- Mrs. Betty J. Maurer
- Ms. Amy Kuhar Mauro
- Mr. James W. McCann
- Mrs. Helen McDonald
- McDonough Foundation
- Ms. Sharon K. McEndarfer
- Edward V. and Margaret A. Minczeski Fund
- Mr. and Mrs. Scott F. Moller
- Ms. Melinda A. Moon and Mr. Thomas Clayton
- Mr. Roger F. Morris
- The Office of Tony Mudd
- Mr. Alan H. Nadon
- Mr. Stephen P. Nani
- Mr. and Mrs. J. Thad Naquin
- Mrs. Mary E. Naquin
- Mr. Clarence E. O’Connell
- Office Interiors, Inc.
- Ms. Patty O’Hara
- Old National Bank
- Oliver Ford Lincoln Mercury
- Mr. and Mrs. Jack Oliver
- Dr. and Mrs. Patrick F. O’Malley
- Mrs. Lorraine J. Orlowski
- Ms. Katherine Z. Osmanski
- Ms. Mary G. Osmanski
- Mr. Robert C. Osmanski
- Mrs. Lynn Overmyer
- Ms. Ann M. Pados
- Mr. Bradley A. Parsons
- Pathfinders Advertising & Marketing Group

- Patrick Industries, Inc.
- Peopelink Staffing Solutions
- Mr. John G. Pfeil
- Mrs. Rose M. Plank
- PNC Bank
- O’Straint
- Ralph M. and Lucille M. Hass Fund
- Recycled/New Pallets
- Ms. Barbara Resnik
- Mr. and Mrs. Barrie Ricketts
- Robinson Family Foundation
- Kelly L. and Karen Rose Foundation
- Mr. and Mrs. Peter K. Rumely
- Mr. and Mrs. John P. Russo
- Mr. and Mrs. Douglas J. Ryback
- Mr. and Mrs. Todd Schurz
- Mr. John S. Schymanski
- Cyndy and Steve Searfoss
- Shamrock Development Inc
- Mr. and Mrs. Randy Sheneman
- Dr. and Mrs. William D. Shephard
- Mrs. Kathryn L. Shields
- Mr. and Mrs. Ralph C. Shive
- Mr. Enrique Siguenza
- Simonton Lake Sportmans Club
- Mr. and Mrs. Gregory G. Singleton
- Mr. and Mrs. David V. Smith
- Sopko, Nussbaum, Inabnit and Kaczmarek
- Roberta and Thomas Spencer
- Steel Warehouse Company, Inc.
- Mr. Allen J. Steenbeke
- Ms. Pamela K. Stephenson
- Mrs. Marsha L. Stoner
- Mr. and Mrs. John D. Szabo
- Dr. Richard W. Tarara
- Teachers Credit Union
- The Fore Guys, L.L.C.
- The Radiology Inc. Foundation
- The Zeglis Family Charitable Foundation Trust
- Dr. and Mrs. James W. Tieman
- Mrs. Amy E. Tribbett



Helping Hands Society
\$1,000 to \$4,999 (cont)

Mr. and Mrs. Malcolm J. Tuesley, Jr
United Way of Central Maryland
United Way of Elkhart County, Inc.
United Way of Marshall Co., Inc.
United Way of Tri-State
University of Notre Dame - Campus Ministry
Mr. and Mrs. Peter Veldman
Veldman's Auto Parts Inc.
VFW Father's Auxiliary Post 49
Mr. Martin E. Wagner
Mrs. Janice K. Wagoner
Ms. Linda S. Wagoner
Wal Mart Supercenter #3436
Mr. and Mrs. Michael J. Wargo
Mrs. Barbara K. Warner
Mrs. Katie Whetstone
Dr. and Mrs. Daniel E. White
Mrs. Dorothy Wiekamp
Mr. Joseph D. Winer
Mr. Robert E. Wozny
X-Ray Consultants, Inc.
Mr. James Zeinis
Mr. Robert D. Zimmerman
Mr. and Mrs. Benjamin Ziolkowski

Heart of Hospice Club
\$500 to \$999

Mr. and Mrs. John S. Abernethy
Mr. and Mrs. Timothy J. Abeska
Anonymous
Anonymous
Anonymous
Mr. Reginald F. Bain
Mr. and Mrs. Francis Baldino
Mr. and Mrs. Peter Baranay
Ms. Sharon L. Basham
Mrs. Kimberly Bassett

Mrs. Karyn Beach
Ms. Cassie A. Bell
Mr. and Mrs. Christopher M. Blad
Mrs. Loretta Borowski
BPOE - South Bend Lodge No. 235
Ms. Charmaine Bradford
Mr. and Mrs. Scott Brennan
Mr. Charles F. Brodt
Mr. and Mrs. Donald L. Buczynski, Sr
Mr. Victor C. Burk
Mr. and Mrs. John T. Bycraft
Ms. Catherine M. Cale
Mr. and Mrs. Patrick A. Carrico
Mr. and Mrs. Eugene L. Cavanaugh
Century Builders
Mr. and Mrs. David B. Chapman
Mr. and Mrs. Stephen W. Clinton
Mr. Richard B. Collins, Jr
Mr. and Mrs. Scott A. Crist
Mr. Eugene F. Crook
Mr. and Mrs. Thomas N. Cukrowicz
Ms. Anita K. Culp
Culver Tool & Engineering, Inc.
Mrs. Judith A. DeFries
Mr. Edward F. Delker
Mr. and Mrs. Tim E. Demarais
DeWulf LLC
Gerry Dickey
Mr. Norman J. Dolak
Dynamic Mechanical Services, Inc.
Mrs. Rosemary Echard
Mr. Trevor Foley
Mr. James R. Fowler
Mr. and Mrs. Charles P. Fricano
Mr. and Mrs. George B. Friend
Mr. and Mrs. Morton S. Fuchs
Dr. and Mrs. Steven Robert Gable
Mr. and Mrs. Robert E. Gaff
Meenu Garg
Mr. and Mrs. James W. Gerber
Gerig Surgical Associates, PC
Ms. Vicki Gnoth
Mr. and Mrs. Raymond F. Goepfrich

Dr. James L. Grainger
Grunawalt Baer Financial
Mrs. Carrie A. Guantonio
Mr. and Mrs. Ted Halbritter, III
Mr. and Mrs. Michael J. Hammes
Mr. David P. Hancock
Mrs. Darlene Hawkins
Mr. and Mrs. Werner Haynes
Mrs. Susan Heartwell
Mr. and Mrs. Randall Hein
Mr. and Mrs. Eric R. Heller
Mr. and Mrs. Jeffrey P. Helman
Helman Sechrist Architecture
Mrs. Cathaleen Hemminger
Ms. Peggy J. Henderson
Mr. and Mrs. Kenneth E. Holderman
Mr. Jeff C. Holtzclaw
Holy Cross Village at Notre Dame, Inc.
Mr. Ronald K. Hughes
Mr. and Mrs. Robert A. Hurst
Hydro Aluminum
Indiana State 500 Club
J & N Stone Inc
Mr. and Mrs. Paul F. Janssen
Jeannie's Tavern Inc.
Mr. Daniel R. Johnson
Mr. and Mrs. Gordon Johnson
Mr. and Mrs. Larry A. Johnson
Mr. Stephen C. Johnson
Mrs. Mary H. Jones
Mr. Michael R. Kaniewski
Marijo and Kevin J. Kelly
Mr. and Mrs. Carl A. Kerby
Governor and Mrs. Joseph E. Kernan
Mr. and Mrs. Robert Kill
Mr. and Mrs. Thomas R. Kinnucan, Jr
Mr. Alexander N. Kish
Mr. and Mrs. Lawrence A. Koepfle
Mr. Henry Kolski
Mr. and Mrs. Don L. Krabill
Krieg Devault LLP
Mrs. Marjorie A. Kronk
LaPaz Lions Club

Mrs. Elizabeth F. Lattanner
Laven Insurance Agency
LaVille Youth Soccer
Lawrence E Glick Family Foundation
Ms. Terri J. Lawton
Leighton-Oare Foundation, Inc.
Mrs. Jill A. Lester
Mr. and Mrs. Michael A. Lintner
Mrs. Jill A. Logan
Mrs. Claire L. Luther
Ms. Christine Madlem
Mr. and Mrs. Stephen A. Maenhout
Jessica and Paul Maich
Mr. Norman S. Makielski
Paul D. Marceau
Mr. Jeremy Martin
Lt. Col. Robert D. Martin, Sr
Ms. Michalen Maternowski
Ms. Nancy L. McEndarfer
Marilyn McGrane
Dr. and Mrs. Stephen T. McTigue, Jr
Michiana Mustangs
Mrs. Orpha M. Miller
Miller's Merry Manor - Warsaw
Mr. William R. Morgan
Ms. Denise E. Morton
Mr. Lewis Naylor
Mr. and Mrs. Ronald W. Nemeth
Mrs. Rose Mary Nietz
Notre Dame Federal Credit Union
ObeCo, Inc
Ms. Candace A. Oltnan
Pathfinders Advertising & Marketing Group
Mr. Kobi Pincus
Mr. and Mrs. Patrick Pinnick
Mr. Lloyd H. Puntney
Mr. Brian Randall
Mr. Paul H. Randall
Red Knights Indiana 8
River Bend Hose Specialty, Inc.
Mr. and Mrs. Jason Russell
Mr. Gregory J. Ryback

Mr. Walter E. Sanders
Mrs. Betty L. Sandstrom
Mr. and Mrs. Robert M. Schosker, Jr
Ms. Bridget Smith
Ms. Grace Smith
Mr. Michael W. Smith
Mrs. Karen Smith-Taljaard and Mr. Robert Guthrie
Mr. and Mrs. Thomas C. Sopko
Ms. Mary A. Sproull
Mr. and Mrs. William P. Stanley
Ms. Joyce Staszewski
Mr. and Mrs. Richard A. Stefaniak
Pat Sterzik
Ms. Shirley Stevens
Mrs. Isabel A. Stickley
Mr. and Mrs. Richard Q. Stifel
Mr. and Mrs. Shane A. Stopczynski
Mr. and Mrs. Gregory L. Suderman
Ms. Cynthia L. Harris and Mr. Craig D. Sullivan
Dr. Gary M. Sunada
Mr. and Mrs. John D. Szabo
Mr. and Mrs. Fred Anthony Tansey
Mr. Jake Taylor
The Ancilla Domini Sisters
The Diocese of Fort Wayne-South Bend, Inc.
The South Bend Clinic, LLP
Mrs. Mary Townner
Mrs. Amy E. Tribbett
Trinity Health
Mrs. Betty Tschida
United Way of Central Indiana, Inc.
Mr. and Mrs. Chad M. Vanderbeek
Mrs. Sharon Waggoner
Mr. and Mrs. Wendell W. Walsh
Mr. William D. Walter
Mr. and Mrs. Thomas J. Wcisel
Mr. and Mrs. David A. Weed
Mr. and Mrs. Michael Weiss
Mr. Ed Wilsberg
Mr. and Mrs. Patrick L. Wolf

Mr. and Mrs. Stephen E. Yeater

Caregiver's Alliance
\$250 to \$499

ABRO Industries
Mrs. Linda Alexander
Ms. Kathryn Allen
Ms. Nora M. Allen
AM General
American Legion Post 27
Dr. and Mrs. Stephen L. Anderson
Mr. and Mrs. Stephen A. Anella
Mr. Lowell D. Anglin
Mr. and Mrs. Robert W. Annis, Jr
Anonymous
Anonymous
Anonymous
Ms. Margaret M. Auth
Nancy and George Badgero
Mr. and Mrs. Edgar J. Baert
Mr. Reginald F. Bain
Mr. and Mrs. Jeffrey A. Balsley
Mr. Rick Baron
Mrs. Deborah A. Barton
Basney Imports
Mr. and Mrs. Monte Beadway
Mrs. Virginia Beehler
Mr. Louis J. Behre
Ms. Rosemary J. Bell
Mr. Lester D. Berger
Mr. Bart Bernacchi
Best-One Retreading of South Bend
Mr. and Mrs. Brad C. Beutter
Mr. and Mrs. Gerry E. Bidlack
Dr. and Mrs. Wilber C. Boren
Mr. John A. Borgerding
Mr. and Ms. Simon A. Borkholder
Mr. and Mrs. Monroe A. Borkholder
Mr. Max Bottorff
Mrs. Rachel Boyd

Reverend Marge Mason Braden
Mr. and Mrs. Edward M. Bradford
Bremen Castings, Inc.
Bremen United Methodist Church
Mr. Rex A. Brown, Jr
Mrs. Lisa Brunnchorst
Ms. Geraldine J. Bukowski
Mr. Thomas J. Busch
Dr. and Mrs. Jeffrey L. Cain
Carris Reels Inc
Mr. Michael G. Cater
Mr. and Mrs. Jerry W. Cavanah
Centier Bank
Mr. Stefan Cerbin
Charles S. Hayes, Inc.
Mr. and Mrs. Alfred H. Choitz
Mr. Peter Cholak
Christiana Creek Invitational Committee
Mr. and Mrs. Kenneth A. Cinal
Clay-Granger Lions Club
Mrs. Marian A. Clements
Communication Company of South Bend
Mr. and Mrs. Fred Cooreman
Mrs. Cheryl Corell
Mr. and Mrs. David Cortright
Cosentino & Chirstofeno Attorneys
Mr. and Mrs. Charles L. Coughlin
Rosemary & Fred Crowe Philanthropic Fund
Mrs. Grace M. Curtis
Mr. and Mrs. William W. Cushwa
Mrs. Angela Dandino
Mrs. Lucille O. Danielson
Mr. and Mrs. David M. Davenport
Mr. and Mrs. Richard L. Davidson
Mr. and Mrs. Douglas A. Davis
Mr. and Mrs. Joel D. DeBruyne
Mr. and Mrs. Nicholas J. DeCicco
Derby Industries
Dr. Michael J. DeStefano
Mr. Raymond C. DeVault
Dicor Company
Mr. and Mrs. Patrick E. Dittrich
Mr. and Mrs. Bernard Doering
Mr. Gary L. Dominy
Doris and Martin Hoffman Family Foundation
Ms. B. Joan Dugger
Ms. Lori Duncan
Ms. Tara R. Eary
Dr. and Mrs. M. Gilbert Eberhart
Mr. Edwin S. Ehlers

Ms. Erica C. Ellenwood
Ms. Susan Elliott
Mr. and Mrs. Rudy Espinoza
Mr. Mark E. Feddern
Ivan W. Fisher Charitable Fund
Mr. Nathan V. Fisher
Five Star Sheets LLC
Mr. Charles M. Fleming
Mrs. Patricia M. Flowers
Forum Architects, LLC
Frank's Auto Body Inc
Mrs. Barbara Fredman
Mr. and Mrs. Douglas R. Freeman
Mr. and Mrs. George E. Freese
Mr. and Mrs. David Frey
Mr. Scott A. Fried
Dr. and Mrs. Steven R. Gable
Dr. and Mrs. Lawrence L. Garber
Gatlin CPA Group
Mr. and Mrs. John Geiger
Mr. and Mrs. Thomas J. Gerhold
Helen A. Gillis
Mr. and Mrs. Ronald Glon
Mr. and Mrs. Gerald F. Goeller
Mrs. Tamara Golubski
Mr. Ted Gorce
W. Glenn Gordon Revocable Trust
Reverend Jonathan Gosser
Ms. Judith F. Graham
Mr. Joseph M. Green
Sister Nora Hahn
Mr. and Mrs. Dwight D. Handschu
Mr. and Mrs. Patrick M. Hanley
Mrs. Annette S. Harris-Moreno
Ms. Yoshiko Hattori
Mr. and Mrs. Larry J. Hauguel, Sr
Mr. and Mrs. Dan Heffelfinger
Mrs. Ursula Hess
Mr. William G. Hicks
Mr. Clayton High, Jr
Mrs. Christine M. Hill
Mrs. Anne Hillman
Mrs. Artemis Hoke
Ms. Jane Holler
Mr. and Mrs. Garold D. Holloway
Mrs. Kristina Hood
Mr. Chris Horton
Fern M. Hostetler
Mr. and Mrs. James E. Houk
Mr. Jim E. Houser
Mr. and Mrs. James R. Howard
Mr. Gregory A. Huber

Mr. Robert C. Hueni
Dr. and Mrs. Thomas A. Hughes
Mrs. Betty L. Huneryager
Mr. Roger D. Huneryager
Mrs. Mary S. Hurley
Dr. Anthony K. Hyder
Mr. and Mrs. Greg A. Hyduk
Indiana Community Bank
Mr. and Mrs. Thomas L. Jellison
Lt. Col. Bradley T. Johns
Johnstone Supply, Inc.
Mr. Adam Jones
Mrs. Britney Jones
Mr. and Mrs. Matthew Kahn
Kappa Kappa Kappa (Beta Delta Chapter)
Mr. and Mrs. James F. Keenan
Mr. Charles E. Kelley
Mr. and Mrs. Brad Kendall
Mr. Larry Q. Kendle
Mrs. Mary R. Kerby
Mr. and Mrs. Glenn E. Killoren
Mr. Lewis D. Kimble
Mrs. Michelle Kirkendall
Miss Rebecca A. Kizer
Mr. and Mrs. Walt Knake
Mr. and Mrs. William J. Knight
Mr. and Mrs. Ronald Koelndorfer
Koontz Lake Association, Inc.
Mr. and Mrs. John E. Krauser
Ms. Roberta A. Krawczyk
Mr. Michael J. Kruk
Mr. and Mrs. James M. Krzyzewski
Kuert Concrete, Inc.
Mr. and Mrs. Timothy J. Kujawski
Mr. and Mrs. Joseph T. Kuzmitz
Mrs. Laurie M. LaDow
Lakeside Campground
Mr. and Mrs. Michael R. Lannoo
Mr. and Mrs. Robert O. Laven
Mr. Gregory G. Lazarczyk
Mr. and Mrs. Robert D. Lemanski
Ms. Karen Lemmon
Mr. David W. Leniski
Mr. Gerald S. Leszczynski
LL Geans Construction Co.
Mr. Dennis P. Long
Mr. and Mrs. Stephen J. Luecke
Mrs. Joan T. MacHatton
Ms. Mary Ellen Maenhout
Mr. and Mrs. Earl Mansfield
Mr. and Mrs. Abraham Marcus
Mr. Terry T. Mark

Marshall & Wells Company
Martell Electric, LLC
Dr. and Mrs. John C. Martens
Mr. and Mrs. Brian Y. McCay
Mrs. Elaine M. McConnell
Mr. and Mrs. Dan McElroy
Mr. and Mrs. David M. McKelvey
Mr. and Mrs. Leo J. McKernan
Mr. and Mrs. Collin Meissner
Mr. Montel L. Menting
Mr. and Mrs. Ward J. Merchant
Mr. and Mrs. Scott T. Mereness
Merrillville High School
Ms. Jennifer Miller
Mr. and Mrs. Marcus S. Miller
Mrs. Mary E. Miller
Mrs. Wanda Miller
Miller's Senior Living Community
Ms. Marcia Minniti
ML Brown & Associates
Ms. Janet H. Monroe
Mr. Charles T. Morse, Sr
Mr. and Mrs. Kelly Moyer
Mr. William T. Mula
Ms. Mary Ellen Mulcahy
Ms. Linda C. Mullenix
Mrs. Judith L. Murphy
Mr. Gary A. Rogaliner and Dr. Jane M. Nani
Mr. and Mrs. Lynn Nelson
Florrie and Ronald Nelson
Network Solutions, Inc.
Nexus Group
Mr. and Mrs. Arthur J. Niedbalski
H. Theodore Noell Family Fund/Attorney and Mrs. H. Theodore Noell
Mr. Patrick D. Novitzki
Ms. Doris A. Oakes
Ms. Jeannine A. Oren
Mr. and Mrs. Richard D. Otto
Outpost Sports
Mr. and Mrs. Meril Overmyer
Ms. Janet E. Pagels
Ms. Maria Pangallo
Ms. Mary Lee Parrish
Ms. Betty Peddycord
Professor Teresa G. Phelps
Ms. Lynette Prezyna
Priests of Holy Cross
Dr. Vera B. Profit
Mrs. Sherrie A. Putman
Tom and Jacki Quigley

Mrs. Marilyn E. Radican
Mrs. Linda S. Rakow
Ms. Laura E. Ray
Mr. and Mrs. James W. Read
Mr. Richard K. Reese, Jr
Mr. and Mrs. John T. Reilly
Mr. Donald E. Renfro
Dr. and Mrs. Mark A. Richter
Mr. Robert W. Riordan
Mr. Carl T. Rittberger
River Park
Mr. and Mrs. Charles W. Roemer
Rollie Williams Paint Spot Inc
Mr. Kevin J. Rollings
Mr. and Mrs. Michael C. Rosenfeld
Mr. and Mrs. James T. Ruthrauff
Mr. Thomas M. Rutter
Reverend Daryl M. Rybicki
Saint Mary's College
Ms. Nancy B. Sanders
Mr. and Mrs. Michael J. Scherer
Mr. and Mrs. David W. Schroeder
Mr. Chester C. Schultz
Mr. and Mrs. Robert J. Schweikhardt
Mr. and Mrs. Kevin J. Sexton
Mrs. Lila R. Shidler
Mr. and Mrs. Alan L. Shoemaker
Mr. Gary Shuder
Shultz Insurance LLC
Sisters of the Holy Cross - Office of President
Dr. and Mrs. Scott D. Skillern
Mr. and Mrs. Dennis R. Smeltzer
Mr. and Mrs. Lyle Smith
Mr. Daniel L. Sosnoski, Sr
Mrs. Victoria E. Sowders
Mr. and Mrs. Stanley D. Sparazynski
Mrs. Jodie L. Spradlin
Ms. Sharon Stack
Mr. and Mrs. Robert Stahl
Mr. Brian Stanley
Mr. and Mrs. Donald L. Stanley
State Employees' Community Campaign
Sr. Joan Marie Steadman
Mr. and Mrs. Jay E. Stebbins
Mr. Matthew T. Stevens
Mr. Dave Stichter
Ms. Susan Stickley
Ms. Lisa Stockberger
Mr. Gregory L. Stockdale
Mr. and Mrs. John D. Stouffer
Mr. and Mrs. Richard W. Stout

Mr. Paul Straughn
Mr. Anthony Tagliaferri
Mr. and Mrs. Laurence R. Taylor
Mrs. Susan S. Taylor
The Women of the First United Church of Christ
Dr. and Mrs. Larry G. Thompson
Ms. Mary T. Treanor
Ms. Connie J. Troyer
Ms. Rosalind D. Tucker
United Way of St. Joseph County Inc
Mrs. Gladys J. VanDePutte
Ms. Angela Walker
Ms. Mary L. Waltz
Mr. Patrick Wargo
Patricia A. Watson
Weas Engineering Inc
Ms. Lisa J. Weaver
Ms. Joyce M. Wegs
Welsheimer Funeral Home
Mr. and Mrs. Edward P. Welter
Mr. Ralph B. Westphal
Dr. Douglas J. Wilson
Ms. Debbie Winey
WNIT Public Television
Mr. George W. Woolridge
Mr. Clifton Wringer
Mr. and Mrs. Al Yoder, Jr
Yoder, Ainlay, Ulmer & Buckingham
Mr. and Mrs. William Zielinski

Planned Giving

Estate of Gerald E Adams
Estate of Fred Black
Estate of Naomi B. Cordtz
Estate of Homer Jackson Fassnacht
Estate of Lenora M Harris
Estate of Carolyn L. Jagodits
Estate of Carl Steven Kasa
Estate of Rosemary B. Kaufman
Estate of Peggy J Millbern
Estate of Ernan McMullin
Estate of Rosemary D. Miholich
Estate of Reginald and Marian Pope
Estate of Ray M. Powell
Estate of Shirley L. Rothe

In Memory

The following gifts were made to the Hospice Foundation between 6/1/2012 and 9/30/2012. We are very grateful for these gifts as they enable us to fulfill our mission to improve the quality of living.

Every effort has been made to ensure the accuracy of this listing. If you wish to report an error or omission, please call our Development Office at 800.413.9083. Any corrections will be in the next issue of CROSSROADS.

In Memory of Ray Albright
Marlene and Duwaine Baughman

In Memory of Ethelmae Alexander
Mr. Laymon Alexander

In Memory of George (Steve) Steven Alkire
Mary Ann Kalka

In Memory of Bessie R. Allen
Nancy and Arnold Dietz
Ms. Peggy Y. Malott

In Memory of Lucile Allen
Alice and Lenn Murdock

In Memory of Veronica Allen
Stacy L. Allen

In Memory of Richard (Rich) A. Allsop
Janice Allsop

In Memory of Eunice Ampersee
Mr. and Mrs. John M. Kruzich

In Memory of Lena C. Amsden
Olive Daniels and Kent Daniels

In Memory of Ruth JoAnn Andrea
Sandy and Nick DeCicco

In Memory of Dale F. Anthony
Subaru of America Foundation, Inc.

In Memory of Frank E. Appleton
Barbara Botka
Linda Laffin
Rose Lord
Jan and Armand Paluzzi
Mr. and Mrs. Thomas G. Tomasula, Jr
University of Notre Dame

In Memory of Dolores Artusi
Allied Specialty Precision
Sheila and Bob Beitler
Lori and Bob Carpenter
Mr. and Mrs. Robert J. Cochran
Joan Dunbar
Jane Anne Hanes
Billie Jean and Kenneth Hurt
Mrs. Annette Linson
Gertie and LG Myers
Barb and Bill Sorocco

In Memory of Deborah A. Ashcroft
Ms. Dixie L. Rose

In Memory of Charles H. Auger
Mr. and Mrs. Robert T. Andrews
Kay and Roy Ellgass
Sharon and William Schlarb
Jim Wasowski

In Memory of Dorothy J. Bagarus
Joan and Martin Conroy
Mary Ann and Lucio DelPrete
Mr. and Mrs. Fred Fekrat
Foster Wheeler Services Department
Ron Jeziorski
Barb Krizman
Bill Krizman

Mr. and Mrs. Neil R. Raskin
Robyn and Jeff Raskin
Sheryl and Joe Schleicher
Alta Zobrosky

In Memory of Georgia Ann Bain
Mr. Reginald F. Bain

In Memory of Catherine L. Baker
Mr. and Mrs. Dale M. Baker

In Memory of Evelyn L. Baker
Jenny Lackman-Chuppe and Family

In Memory of Jeffery L. Ballard, Sr
Theresa Ballard

In Memory of Margaret Rose Balogh
Gregory Balogh

In Memory of Marvin Balogh
Gregory Balogh

In Memory of Lillian F. Banchak
Helen Franta

In Memory of Marsha E. Banning
American Legion Post 27
The Dart League

In Memory of Joseph (Joe) Ronald Barhydt
F & F Machine Specialties
Judy Powell

In Memory of Joseph J. Barilich
Kathy and Paul Futa
Marilyn Katovsich

In Memory of Rudolph (Barky) Barkovich
Ms. Tilly Kuzmits

In Memory of Billy (Bill) Joe Barnett
Emily, Martha Jo and Roger Moynahan
Mrs. Harriet A. Probst
In Memory of Dorothy J. Baron
Rick Baron and Family

In Memory of Sandra J. Barr
Mr. Erik D. Boembeke

In Memory of Mary Ann Bartell
Marilyn and Don Dennig

In Memory of Marcus Edward Bartz
Linda Alexander
Janet Pagels

In Memory of Virginia Elkin Batchelor
Shultz Insurance, LLC

In Memory of Mary Cecilia Battista
Elsie and Harry Brown
The Dobson Family
Ms. Suzanne M. Morgan

In Memory of Joan Baughman
Marlene and Duwaine Baughman

In Memory of Ralph Duwaine Baughman
Marlene and Duwaine Baughman

In Memory of Robert Earle Baumgardner
Sarita and Robert Foegley
Phyllis and Bill Hamel
Patricia R. Rogers
Sandi and John Stouffer

In Memory of Paul Eugene Baumgartner
Christine Kerby
Carole McCormick
Karen and Mike Straka
The Terri VanOverberghe Family
Patricia Zabik

In Memory of Darrell H. Beach
Carolyn and Larry Garber

In Memory of Richard (Dick) Rex Bean
Mr. and Mrs. Eugene Gillian
Mr. and Mrs. Dustin L. Harmon
Tom, Jane and Jim Kasson

In Memory of Norval Byron Beane
The Lee Anglemyer Family
Goldie Buckner
Jane McFarland

Dave and Melonee Schutz
Joan and Lawrence Schutz
Mariah, Kim and Tim Schutz

In Memory of Wilhelmina L. Beber
American Legion Auxilliary Post 74
American Way Marketing, LLC
Nylene Culveyhouse
Gloria and Charles Gordon
The Jerry Hay Family
Lois and Richard Leib
Mr. and Mrs. Charles L. McCuen
My Dental Care
Margie and Mike Petersen

In Memory of Victoria Bechtold
Mr. John W. Witter

In Memory of Dennis D. Beehler
Nancy Coleman
Andrea Crepe
Bob Fryer
Sheryl Heberling
Rhonda Heffelfinger
Kelsey Jackson
Tina Joossens
Mrs. Kristi Keller
Lisa Langwell
Larry Moody
Marian Moody
Gail Stricker
Roger Sult
Stacy Sult
Kathy and Vic Toth
Jane and Tom VanDeWalle
Dr. Yount
Mr. and Mrs. Joseph A. Zarazee

In Memory of John C. Boenne
Mr. and Mrs. Robert A. Hurst
Mr. and Mrs. Thomas J. Lentine, Jr
Louise Sibley
Lorraine and Elmer VanDeWille
Ms. Mary R. VanOoteghem

In Memory of Dorothy (Dottie) M. Bennett
Linda and Chris Scherzinger

In Memory of John Leroy Bennett
Darlene and Jim Bennett
Elizabeth and Jimmy Patrick

In Memory of Lisa Rae Bennett
Linda and Chris Scherzinger

In Memory of Donna Jean Bernacchi
Mr. Harold C. Bernacchi

In Memory of John J. Berzai, Jr
Linda and Mike Berzai

In Memory of Lorraine L. Berzai
Linda and Mike Berzai

In Memory of Gary E. Betzer
Diana and Ron Betzer
Becky and Vic Desimone
Deena and Leroy Dipert
Michelle and Tom Gaby
Linda and John Kerr
Mr. and Mrs. David Knapik
Mary Ann Peterson
Jennifer Anders Ray

In Memory of Gertrude (Trudy) C. Beyers
Barbara and Elmer Gaedtk
Karol and Gene Harsanyi
Mary Ann and Tom Wozniak

In Memory of Leona Bidlack
Mr. and Mrs. Gerry E. Bidlack

In Memory of Laraleen Bikowski
DeeAnne M. Locsi

In Memory of Jeanette E. Bishop
Sue and Fred Barnett

In Memory of Claralu Blake
Mr. and Mrs. Bob Slaughter

In Memory of Joseph R. Blakley
Lester Berger

In Memory of Larry Dean Bleiler
Alice Chan

In Memory of John C. Boenne
Mr. and Mrs. Robert A. Hurst
Mr. and Mrs. Thomas J. Lentine, Jr
Louise Sibley
Lorraine and Elmer VanDeWille
Ms. Mary R. VanOoteghem

In Memory of Rose Mary Bognar
Mr. and Mrs. Timothy M. Bognar

In Memory of Bridget C. Bogumill
Mr. and Mrs. Michael P. Bogumill

In Memory of Marie Juanita Bollenbacher
Suzie and Mike Dodds
Ce and Gary Pugh
Dixie and Mike Sheetz
Mr. and Mrs. George White

In Memory of Frank C. Bonfiglio
Brenda Losee

In Memory of Mari Lynn Border
Mr. and Mrs. Charlie Albertson
Luke Becknell
Mr. Jerry K. Border
Zada and Bob Border
Lori and Brent Cooper
Julie and Lee Diefebaugh
Amy and Barry Donley
Sue and John Emery
Shirley and Ellsworth Everest and Family
Everest Excavating, LLC
Lori and Keith Everest
Sarah and Don Feldman
Kathy and Lewis Feldman
Jerri and Lyle Gephart
Rose Ann and Steve Hall
Lee and Larry Klingerman
Randy Klotz
Nancy and Dick Martin
Kay and Larry McDonald and Family
Terry and Dennis Miller
Norm's Farm & Garden Supply
Lynette and Mark Otto
Linda Carmean Lewis Rupert
Linda and Steve Shirey
Wende and Scott Tucker
Jane and Tom Watkins

In Memory of Albert (Brad) Bradshaw, Jr
Marie Weiss

In Memory of Lillian June Brandenburg
Janice and Joe Jarboe

In Memory of Oscar Earl Brandenburg
Janice and Joe Jarboe

In Memory of Robert W. Brandon
Karen Nicholson

In Memory of Kenneth (Kenny) L. Breen
Carolyn and John Nimitz

In Memory of Joseph X. Brennan
Dr. Sheila O' Flynn Brennan

In Memory of Joyce Breveard-Butts
Kerri A. Breveard

In Memory of Dorothy May Bright
Mr. and Mrs. Carl Fisher

In Memory of Marlee M. Britton
Becky Kizer
Mrs. Pat Kizer
Mrs. Dian Wordinger

In Memory of Edith M. Broomall
Karen Krassner

In Memory of Carolyn Angie Brothers-Yahle
Judi Appel
Mrs. Karen M. Cunningham
Mr. and Mrs. Edmund R. Kaplon
St. Joseph Regional Medical Center, Arthritis
Acquatic Class
Helen M. Zagrzewski

In Memory of Ernest (Ernie) Leland Brovold
Julie and Bob Aloï
Jayne Colvin
John Froyck
Dr. and Mrs. G. R. Hershberger
Mr. and Mrs. Steve Giese
Florita and Darrell Graf
Sue and Ed Hiller
Ms. Sandy K. Hoover
Ideal Consolidated, Inc.
Julie and David Sanders
SMACNA of Michiana, Inc.

In Memory of Duane Frank Brown
Martha A. Schaefer

In Memory of Gerald S. Brown
Whispering Hills South Home Owners Assoc.

In Memory of Virginia (Genny) P. Boyer
Elkhart Comm. Schools Education Services
Center, Transportation Dept
Judy Miltroka
Judy Sassaman

In Memory of Esther Browning
Rita and Jerry Blinn and Family
Bill Browning's Children and Grandchildren
Deb and Duane Crisp
Kay and Gary Delio
Linda Johnston Fenwick
Marcia Jebelian
Sheila and Rodney Johnson
Mr. Thomas R. Starkweather

In Memory of Blanche Bryson
Ida

In Memory of James (Jim) Dewey Buchanan
Jessica and Greg Buss
Sue and Dick Peterson

In Memory of Francis (Ken) Kenneth Bueche
Judy Hums

In Memory of Eldon D. Buell
Judy and Don Ruszkowski
Michala, Andrea and Joe Zappia

In Memory of Emma L. Buell
Judy and Don Ruszkowski
Michala, Andrea and Joe Zappia

In Memory of Joseph Bukowski
Geraldine J. Bukowski

In Memory of Frederick L. Bullinger, Sr
Mary O. Bullinger

In Memory of Wayne H. Burgoon
Mrs. Nadine Burgoon

In Memory of Mary I. Burkett
Elaine Dick

In Memory of The Burzynski Family
Mr. and Mrs. Stanley D. Sparzynski

In Memory of Grace M. Busse
Mr. and Mrs. Richard A. Acksel
Anonymous
Mr. and Mrs. John S. Brumbaugh
Ms. Karen L. Busse
Jackie and Keith Dougherty
Fran and David Douglas
Carol and Bill Kuhns
Ann and Gary Mann
Connie and Randy Miller
Ms. Renata Moyer
Mrs. Ada M. Nickel
Peggy and Joe Scher
Ms. Treva P. Vaksvik
Marcy and Bud Wanke
Mr. and Mrs. Jack E. Welter
Marietta Wilkerson
Pat Willey
Rae and Ron Wright
Mr. and Mrs. Richard Zinsmeister

In Memory of Joyce Claire Bowman
Mr. and Mrs. Michael K. Bowman

In Memory of Lillian June Brandenburg
Janice and Joe Jarboe

In Memory of Robert W. Brandon
Karen Nicholson

In Memory of Kenneth (Kenny) L. Breen
Carolyn and John Nimitz

In Memory of Joseph X. Brennan
Dr. Sheila O' Flynn Brennan

In Memory of Joyce Breveard-Butts
Kerri A. Breveard

In Memory of Dorothy May Bright
Mr. and Mrs. Carl Fisher

In Memory of Marlee M. Britton
Becky Kizer
Mrs. Pat Kizer
Mrs. Dian Wordinger

In Memory of Edith M. Broomall
Karen Krassner

In Memory of Carolyn Angie Brothers-Yahle
Judi Appel
Mrs. Karen M. Cunningham
Mr. and Mrs. Edmund R. Kaplon
St. Joseph Regional Medical Center, Arthritis
Acquatic Class
Helen M. Zagrzewski

In Memory of Ernest (Ernie) Leland Brovold
Julie and Bob Aloï
Jayne Colvin
John Froyck
Dr. and Mrs. G. R. Hershberger
Mr. and Mrs. Steve Giese
Florita and Darrell Graf
Sue and Ed Hiller
Ms. Sandy K. Hoover
Ideal Consolidated, Inc.
Julie and David Sanders
SMACNA of Michiana, Inc.

In Memory of Duane Frank Brown
Martha A. Schaefer

In Memory of Gerald S. Brown
Whispering Hills South Home Owners Assoc.

In Memory of Esther Browning
Rita and Jerry Blinn and Family
Bill Browning's Children and Grandchildren
Deb and Duane Crisp
Kay and Gary Delio
Linda Johnston Fenwick
Marcia Jebelian
Sheila and Rodney Johnson
Mr. Thomas R. Starkweather

In Memory of Blanche Bryson
Ida

In Memory of James (Jim) Dewey Buchanan
Jessica and Greg Buss
Sue and Dick Peterson

In Memory of Francis (Ken) Kenneth Bueche
Judy Hums

In Memory of Eldon D. Buell
Judy and Don Ruszkowski
Michala, Andrea and Joe Zappia

In Memory of Emma L. Buell
Judy and Don Ruszkowski
Michala, Andrea and Joe Zappia

In Memory of Joseph Bukowski
Geraldine J. Bukowski

In Memory of Frederick L. Bullinger, Sr
Mary O. Bullinger

In Memory of Wayne H. Burgoon
Mrs. Nadine Burgoon

In Memory of Mary I. Burkett
Elaine Dick

In Memory of The Burzynski Family
Mr. and Mrs. Stanley D. Sparzynski

In Memory of Grace M. Busse
Mr. and Mrs. Richard A. Acksel
Anonymous
Mr. and Mrs. John S. Brumbaugh
Ms. Karen L. Busse
Jackie and Keith Dougherty
Fran and David Douglas
Carol and Bill Kuhns
Ann and Gary Mann
Connie and Randy Miller
Ms. Renata Moyer
Mrs. Ada M. Nickel
Peggy and Joe Scher
Ms. Treva P. Vaksvik
Marcy and Bud Wanke
Mr. and Mrs. Jack E. Welter
Marietta Wilkerson
Pat Willey
Rae and Ron Wright
Mr. and Mrs. Richard Zinsmeister

In Memory of Joyce Claire Bowman
Mr. and Mrs. Michael K. Bowman

In Memory of Lillian June Brandenburg
Janice and Joe Jarboe

In Memory of Robert W. Brandon
Karen Nicholson

In Memory of Kenneth (Kenny) L. Breen
Carolyn and John Nimitz

In Memory of Joseph X. Brennan
Dr. Sheila O' Flynn Brennan

In Memory of Joyce Breveard-Butts
Kerri A. Breveard

In Memory of Dorothy May Bright
Mr. and Mrs. Carl Fisher

In Memory of Marlee M. Britton
Becky Kizer
Mrs. Pat Kizer
Mrs. Dian Wordinger

In Memory of Edith M. Broomall
Karen Krassner

In Memory of Carolyn Angie Brothers-Yahle
Judi Appel
Mrs. Karen M. Cunningham
Mr. and Mrs. Edmund R. Kaplon
St. Joseph Regional Medical Center, Arthritis
Acquatic Class
Helen M. Zagrzewski

In Memory of Ernest (Ernie) Leland Brovold
Julie and Bob Aloï
Jayne Colvin
John Froyck
Dr. and Mrs. G. R. Hershberger
Mr. and Mrs. Steve Giese
Florita and Darrell Graf
Sue and Ed Hiller
Ms. Sandy K. Hoover
Ideal Consolidated, Inc.
Julie and David Sanders
SMACNA of Michiana, Inc.

In Memory of Duane Frank Brown
Martha A. Schaefer

In Memory of Gerald S. Brown
Whispering Hills South Home Owners Assoc.

In Memory of Esther Browning
Rita and Jerry Blinn and Family
Bill Browning's Children and Grandchildren
Deb and Duane Crisp
Kay and Gary Delio
Linda Johnston Fenwick
Marcia Jebelian
Sheila and Rodney Johnson
Mr. Thomas R. Starkweather

In Memory of Blanche Bryson
Ida

In Memory of James (Jim) Dewey Buchanan
Jessica and Greg Buss
Sue and Dick Peterson

In Memory of Francis (Ken) Kenneth Bueche
Judy Hums

In Memory of Eldon D. Buell
Judy and Don Ruszkowski
Michala, Andrea and Joe Zappia

In Memory of Emma L. Buell
Judy and Don Ruszkowski
Michala, Andrea and Joe Zappia

In Memory of Joseph Bukowski
Geraldine J. Bukowski

In Memory of Frederick L. Bullinger, Sr
Mary O. Bullinger

In Memory of Wayne H. Burgoon
Mrs. Nadine Burgoon

In Memory of Mary I. Burkett
Elaine Dick

In Memory of The Burzynski Family
Mr. and Mrs. Stanley D. Sparzynski

In Memory of Grace M. Busse
Mr. and Mrs. Richard A. Acksel
Anonymous
Mr. and Mrs. John S. Brumbaugh
Ms. Karen L. Busse
Jackie and Keith Dougherty
Fran and David Douglas
Carol and Bill Kuhns
Ann and Gary Mann
Connie and Randy Miller
Ms. Renata Moyer
Mrs. Ada M. Nickel
Peggy and Joe Scher
Ms. Treva P. Vaksvik
Marcy and Bud Wanke
Mr. and Mrs. Jack E. Welter
Marietta Wilkerson
Pat Willey
Rae and Ron Wright
Mr. and Mrs. Richard Zinsmeister

In Memory of Joyce Claire Bowman
Mr. and Mrs. Michael K. Bowman

In Memory of Lillian June Brandenburg
Janice and Joe Jarboe

In Memory of Robert W. Brandon
Karen Nicholson

In Memory of Kenneth (Kenny) L. Breen
Carolyn and John Nimitz

In Memory of Joseph X. Brennan
Dr. Sheila O' Flynn Brennan

In Memory of Joyce Breveard-Butts
Kerri A. Breveard

In Memory of Dorothy May Bright
Mr. and Mrs. Carl Fisher

In Memory of Marlee M. Britton
Becky Kizer
Mrs. Pat Kizer
Mrs. Dian Wordinger

In Memory of Edith M. Broomall
Karen Krassner

In Memory of Carolyn Angie Brothers-Yahle
Judi Appel
Mrs. Karen M. Cunningham
Mr. and Mrs. Edmund R. Kaplon
St. Joseph Regional Medical Center, Arthritis
Acquatic Class
Helen M. Zagrzewski

In Memory of Ernest (Ernie) Leland Brovold
Julie and Bob Aloï
Jayne Colvin
John Froyck
Dr. and Mrs. G. R. Hershberger
Mr. and Mrs. Steve Giese
Florita and Darrell Graf
Sue and Ed Hiller
Ms. Sandy K. Hoover
Ideal Consolidated, Inc.
Julie and David Sanders
SMACNA of Michiana, Inc.

In Memory of Duane Frank Brown
Martha A. Schaefer

In Memory of Gerald S. Brown
Whispering Hills South Home Owners Assoc.

In Memory of Esther Browning
Rita and Jerry Blinn and Family
Bill Browning's Children and Grandchildren
Deb and Duane Crisp
Kay and Gary Delio
Linda Johnston Fenwick
Marcia Jebelian
Sheila and Rodney Johnson
Mr. Thomas R. Starkweather

In Memory of Blanche Bryson
Ida

In Memory of James (Jim) Dewey Buchanan
Jessica and Greg Buss
Sue and Dick Peterson

In Memory of Francis (Ken) Kenneth Bueche
Judy Hums

In Memory of Eldon D. Buell
Judy and Don Ruszkowski
Michala, Andrea and Joe Zappia

In Memory of Emma L. Buell
Judy and Don Ruszkowski
Michala, Andrea and Joe Zappia

In Memory of Joseph Bukowski
Geraldine J. Bukowski

In Memory of Frederick L. Bullinger, Sr
Mary O. Bullinger

In Memory of Wayne H. Burgoon
Mrs. Nadine Burgoon

In Memory of Mary I. Burkett
Elaine Dick

In Memory of The Burzynski Family
Mr. and Mrs. Stanley D. Sparzynski

In Memory of Grace M. Busse
Mr. and Mrs. Richard A. Acksel
Anonymous
Mr. and Mrs. John S. Brumbaugh
Ms. Karen L. Busse
Jackie and Keith Dougherty
Fran and David Douglas
Carol and Bill Kuhns
Ann and Gary Mann
Connie and Randy Miller
Ms. Renata Moyer
Mrs. Ada M. Nickel
Peggy and Joe Scher
Ms. Treva P. Vaksvik
Marcy and Bud Wanke
Mr. and Mrs. Jack E. Welter
Marietta Wilkerson
Pat Willey
Rae and Ron Wright
Mr. and Mrs. Richard Zinsmeister

In Memory of Joyce Claire Bowman
Mr. and Mrs. Michael K. Bowman

In Memory of Lillian June Brandenburg
Janice and Joe Jarboe

In Memory of Robert W. Brandon
Karen Nicholson

In Memory of Kenneth (Kenny) L. Breen
Carolyn and John Nimitz

In Memory of Joseph X. Brennan
Dr. Sheila O' Flynn Brennan

In Memory of Joyce Breveard-Butts
Kerri A. Breveard

In Memory of Dorothy May Bright
Mr. and Mrs. Carl Fisher

In Memory of Marlee M. Britton
Becky Kizer
Mrs. Pat Kizer
Mrs. Dian Wordinger

In Memory of Edith M. Broomall</

In Memory (continued)

In Memory of Margaret (Peggy) T. Coyle

Mary Brigid Halloran, Suzy and John
Dee and Dwight Handschu
William H. Leahy
Linda and Randy Murowski
Barbara and Dennis Norkus
Pat Whalen and Mike Gillam

Women's Ivy League, AA—Maureen, Barbara,
Kathy, Mary Ann, Lois, Nancy, Diane, Penny,
Sarah

In Memory of Marilyn L. Craig

Kathryn A. Kessler-Dolojan
Ms. Delores A. Fox
Pat and Fred Hillebrand
Mr. and Mrs. Michael J. Hillebrand
Joint Special Operations Command J4,
Ladies and Gentlemen of the Directorate
of Logistics

In Memory of Anna (Ann) Lillian Craig

John Craig

In Memory of Stella Jane Crain

Margaret Belford
The Nichols Family

In Memory of Joan Crook

Barb and Ken Botka
Sunny and Roger Cave
Leona and Terry Cave
Bruce Chamberlin
Mr. George E. Danneker
Tucker, Jo'el and Travis Johanson
John R. Juan
Mr. and Mrs. Mark W. Kamm
Ryan Mishler
Marija Ramon
Debbie and Carl Schnaible
The Spears-Engle-Owens Family
Doreen and Joseph Trimboli
Ms. Deborah L. Vinson

In Memory of Anne Elaine Cross

Nancy and Joe Knauf

In Memory of Bonnell (Mae) M. Crosslin

Cheryl and Craig Bartley
Nancy and Greg Goldy
Mary A. Goldy
Rodney B. Goldy
Amy and Tim Goldy
Debra Stutsman

In Memory of Geraldine (Gerry) Crumley

Elaine and Carl Montgomery

In Memory of Arvada June Culp-Hauber

Roxie Feakner
Nancy Rynearson
Connie Taber
Barbara Yocum

In Memory of Marlene A. Culver

Shirley and Ted Beveridge

In Memory of Dale Gene Curtis

Grace Curtis

In Memory of Larry B. Cyrier

Lila Merrick and Rose Marie Kaseweter

In Memory of Leo J. Czarnecki

Mary Beth and David Czarnecki

In Memory of Mark Czarnecki

Mary Beth and David Czarnecki

In Memory of Marjorie J. Czosnowski

Lynn M. Hill

In Memory of Elizabeth I. Dales

Mr. Norman S. Dales

In Memory of Jennifer M. Dalkowski

Mr. and Mrs. Dennis Kray
Mr. and Mrs. Earl Mansfield
Ms. Susan H. Ollan
Rolling Prairie Lionettes
Mr. and Mrs. Terry Waak

In Memory of Michael A. Danch, Jr

St. Joseph's High School

In Memory of Sterling Daniels

Lillian Daniels

**In Memory of Walter (Walt) Murray
Danielson**

Mrs. Lucille O. Danielson

In Memory of Betty Ann Danik

Marilyn and John Jurgonski
South Bend Softball Umpire Association

In Memory of Willard Ray Darnell

Dru and Ted Schmidt

In Memory of George F. Datena

Marianne and Dennis Brosh
Judy and Bruce Cassidy
Mr. and Mrs. Robert J. Deputy
Gail and Dave Duthie
Elkhart Bureau of Motor Vehicles
Sara and Tom Elkin
Mary and Dan Gorden
Barbara and Tom Kurth
Arlene and Leonard Lucchese
Mary Lucchese
Star Tool & Die, Inc.
Beth and Jerry Swinehart
Margaret and Robert Woods
Mr. and Mrs. Fred G. Wright

In Memory of James (Jim) A. Davis

Ms. Janet A. Culp
Nancy and James Kitson
Judy Miller, Bev and Kelly
Emily and Chris Navarro
Ginger Thorne
Marcia and Roger Weadock
Mr. and Mrs. Merle Yoder

In Memory of John Henry Davis, Jr

Betty and Joseph Chikar
Cressy & Everett Realtors, Inc.
Mrs. Mary Ann McSorley
Mr. and Mrs. John H. Murphy

In Memory of Lee Z. Davis

Constance M. Davis

**In Memory of Patricia (Pat) M.
Deafenbaugh**

Mr. and Mrs. Tim Celter
Peggy and Clem Litka
Ann Marek
Cyndi and Dave Miesner
Mary and Steve Pajakowski
Natalie and Paul Vanderheyden

In Memory of Kathleen R. Deal

Melissa and Tim Bemiller
Nancy Brogdon
Mr. and Mrs. Roger L. Paseka
Patricia Pierpont

**In Memory of Robert (Bob) William
Deal, Sr**

Mr. and Mrs. Kenneth L. Delinski

In Memory of Francis (Frank) DeBuisser

Susan and Walt Davis
Julie and Denny DeBuisser

In Memory of Irene DeBuisser

Family Dental Health
Jo and Jack Geary
Paul B. Glass, DDS
Marka and Jack Jackson
Geraldine Jakubowicz
Mr. and Mrs. Joseph B. Jakubowicz, Jr
Bob Jakubowicz
Mrs. Mary A. Lacay
Evalyn Liszewski
Connie and Nick Mark
Mr. and Mrs. Kevin L. Swartz
Mr. and Mrs. Albert B. Vanderheyden

In Memory of Joseph F. DeBuisser

Ms. Cathryn S. Chen

In Memory of Dee

Mrs. Marie E. Weiss

In Memory of Judith (Judy) A. Deeb

Jacquelynn L. Britton

In Memory of Gene Allen DeFauw

Nancy and Robert Clements
Pam and Vic DeCola
Jackie DeFauw
Terri and Ron DeFauw
Jane and Russell DeFauw
Freeman-Spicer Leasing & Insurance
Corporation
Valerie and John Gaylor
Dr. Harriet A. Hamer

Kathleen and Bill Hohnacki
Billie and Bill McCamish
Karen and Rob Mesaros
Donna and Chad Miller
Mr. and Mrs. Charles Pribbernow
Nancy and Jeff Rensberger
Suzy and Jim Rozzi
Lora Rozzi
Maria and Brian Siqueira
Hazel and Jay Stevens
Mr. and Mrs. Brian J. Thornton
Donna and Jim Tieman
Mr. and Mrs. Michael J. Williams

In Memory of Patricia Helen DeLaurelle

Mr. and Mrs. Thomas J. DeLaurelle

In Memory of Susan DeLaurelle

Mr. and Mrs. Thomas J. DeLaurelle

In Memory of Thomas Clifford Delker

The Frank Delker Clan—Frank; Gale; Jim and
Anna Maria; Deanna and Steve; Audrey,
Jeff, Ella and Pipa Hill; Emily, Rick, Laine
and Rose Delker Theobald
Ms. Kristie W. Saffer

In Memory of Anne K. Demarais

Willow Carter

In Memory of Jeanne Collier Denham

Linda Riley

In Memory of Judith Ann Deranek

Susan Deranek

In Memory of Esther DeRyckere

Michele Fullmer

In Memory of Joseph DeRyckere

Michele Fullmer

In Memory of John H. Dettmer

Mr. and Mrs. Mark E. Berger
The John Dettmer Family
Kristy and Dave Hornbacker
Northside Lawrence Lake Weed Control
Beverly and Jim Ruggles

In Memory of Val June Schafer

Theresa and Edward Yanke
Nadine Zahm

In Memory of Arthur (Art) W. Dickey

Mary Beth Dominello
Carol and Michael Downs
Dee and Dwight Handschu

In Memory of Margaret F. Huff

The Mary Lou and Clem Miller Family

In Memory of James (Jim) A. Dickey

Gerry Dickey

In Memory of Betty J. Ditsch

Mr. and Mrs. William C. Fick

In Memory of Edwin Dittrich

Mr. and Mrs. Patrick E. Dittrich

In Memory of Gertrude Dolores

Mr. and Mrs. James A. Chase

In Memory of Michael A. Dominiak

Ms. Michele Dominiak

In Memory of Maxine (Mickey) Donaldson

Patricia Kasper

In Memory of Marija Dosmann

Sue Witz

In Memory of Mary Lou Douglas

Barbara R. Howlett

In Memory of Norman Downs

Nancy Belting
Lucy Nieter
Dr. Carol S. North and Mr. Richard Olson
Carmen Ringle

In Memory of Keith (Smokey) Drake

Beatrice Drake

In Memory of James E. DuBois

Mrs. Dolores J. DuBois
Jeffrey DuBois

In Memory of Alex M. Dukai

Kari and Corey Dukai

In Memory of Lewis I. Duncan, Jr

Marguerite Duncan

In Memory of Daniel Charles Dutrieux

Mr. Paul M. Wilken
Mr. and Mrs. Robert Wilken

In Memory of Alice H. Dygalski

Janet and Scott Creveling
Mr. and Mrs. Fred A. Kruger
Lock Joint Tube, Inc.
Robert Watkins

In Memory of Joan P. Dylejko

Mrs. June B. DeHaven

In Memory of Steven L. Eary

Ms. Tara R. Eary

In Memory of William (Coach) J. Echard

Mrs. Rosemary Echard

In Memory of Stephen M. Egyhazi

Nancy and Jim Krzyzewski

In Memory of Juanita F. Eilers

Mr. and Mrs. Jerome Herber

In Memory of Janet L. Erickson

Mr. and Mrs. Von L. Baum
David P. Hancock
Ms. Michele S. Hart
Carolyn and Roger Kelly
Linda and Bill Killian
Mr. and Mrs. Gregory S Miller
Mary Ann Norris

In Memory of Philip Rader

Mr. and Mrs. James W. Read
Mr. and Mrs. Ronald E. TenBrink

Mr. and Mrs. Dan Thompson

Tyner Class of 1957
Kay Williams
Ms. Nadine J. Wisler

In Memory of Betty Lou Erwin

Beth A. Davis

In Memory of Mark Erwin

Beth A. Davis

In Memory of Phyllis Evans

Nyla and Dick Moore

In Memory of Anne Marie Fabrowicz

Donna and Steve Teter

In Memory of Walter G. Faltynski

Bonnie Heeter

In Memory of John (Johnny) R. Feferman

Andy and Duke Jones

In Memory of John B. Fell

Mr. and Mrs. Brad Barton
Glenna and Jerry Miller

**In Memory of Richard (Dick) Charles
Fields**

Helen L. Fields

In Memory of Joan M. Finley

Eleanor S. Filipek

In Memory of Robert (Bob) R. Flora

Dan Adams
June and Dick Binkley
Erik Cox
Barb and Jim Cox
Shirley Cox
Susan and Rex Crump
Ms. Gail Flora
Robert Freshour
Mr. and Mrs. Leo Hartman and Families
Lori and Lance Hittle
Lois and Larry Kensinger
Doris Kepler
Lorena Kline
Pat and Mike Lett
Marshall County - County Offices
Michele and Wayne Miller
Moeller Enterprises, Inc.
Shirley Olson and Family
Mr. and Mrs. Jack A. Pugsley
Mr. and Mrs. Charles E. Ripley
The Charles Ryan Family
Nichole Simpson
Mrs. Mary Ellen Triplett
Mr. Steven C. Weissert

In Memory of Harvey (Taylor) T. Ford, Jr

Kathy and Don Fozo
Ms. Gladys M. Fozo

In Memory of Francis L. Foss

Yvonne A. Foss

In Memory of Dale K. Fozo

Florence and Alex Benko
Diane Boehnlein
Don Czajkowski
Roberta Dangerfield
Stacey and Randy Dudeck
Cathy and Tom Eader
Mr. and Mrs. Norbert I. Gapczynski
Robert Grauel
Dorothy Grochowski
Margie and Jim Kish
Cheryl Kochmar
Barbara Kolber
Phyllis and Michael Largey
June and Ron Milewski
Grace Myers
Teri and Todd Parker and Family
Sharon and Bill Przybysz
Judy and Richard Rajter
Ritschard Bros, Inc.
Stephen Rzepnicki

Mr. and Mrs. Richard Schultz

Mr. and Mrs. Bob Sikorski
Diana and Greg Sobecki
Mary Lee and Larry Stull
Pat and Ralph Szalewski
Ms. Carol A. Thompson
Washington High School, Staff

In Memory of Margaret J. Freund

Grace Curtis
Ms. Helen R. Dunlap
Anita and Mike Foldenauer
Evelyn and Steve Lurie
Betty and Bill Niedbalski
Carolyn and Bill Niedbalski
Mary Pajor
Phyllis B. Rozanski
Irene Werenka

In Memory of Betty J. Fuchs

Mrs. Eileen F. Sniadecki

In Memory of Jean Fuller

Mr. and Mrs. Thomas M. Fuller

In Memory of Robert L. Gable

Julie Englert
Mrs. E. Elva Gable

In Memory of Wladyslawa (Gladys) Ganser

Peggy Checchio
Sopko, Nussbaum, Inabnit and Kaczmarek

In Memory of Jennifer C. Garman

Betty Wade

In Memory of Blanche Garrett

Mr. and Mrs. Stephen F. Latowski

In Memory of Sherry Ann George

Mrs. Darlene Hawkins

In Memory of Mary Lou Gesto

Mr. and Mrs. Harvey S. Stump

In Memory of Joan Therese Gilloon

Mickey Bly

In Memory of Betty Jean Gingrich

Mr. and Mrs. James E. Houk

In Memory of Daniel J. Ginter

Nancy and Kevin Bikowski

In Memory of Evelyn (Evie) M. Giska

Ms. Nora M. Allen
National Oil & Gas, Inc.
Peggy and Dennis Swanson
Mr. and Mrs. Ronald W. Taylor

In Memory of Herbert Lloyd Givens

AFP Michiana Chapter, Board of Directors
Anonymous

Dr. and Mrs. Vincent Henderson

Andy and Duke Jones
Mr. and Mrs. Don L. Krabill
Mr. and Mrs. Robert I. Lewis
South Bend Career Academy
The Apprentice Academy

In Memory of Dorothy Glonz

Jean and Robert Miller

In Memory of Lois J. Gnass

Mr. and Mrs. Terry L. Gennicks
John E. Milcarek
Mr. and Mrs. Donald L. Sims
Mary L. Wolf

In Memory of Richard (Dick) M. Gnoth

Ms. Cynthia A. Bodle

In Memory of Robert (Bob) P. Goetz

Mrs. Eileen F. Sniadecki

In Memory of Marva Lou Goodman

Sherry and Dick Best
Carolyn and Mick Lannoo
Julie and Max Ochs
Shawnee Specialties, Inc.

In Memory of Alexandria (Alex) M. Gorbitz

June Kucharski and Stanley Bikowski
Mr. and Mrs. Bill Davidson
Sandy and Nick DeCicco
Dolores Hawkins
Michele A. Jackson

The Kerulis Family
Ruth and Bill Molnar
Ms. Mary Rogers
The Sisk Family
Kathy and Dave Smith and Family
Melanie Weber

In Memory of Mary Lou Gordon

Martha Haines
Bernice Panting
Sara Witt

In Memory of Vera Gorce

Ted Gorce

In Memory of Dorothy Ann Govaert

Mrs. Therese M. Banicki

In Memory of Evelyn B. Green

Charles, Greg, Rick, Matt Myers and Families
Jean Smith

In Memory of Earl Greenwell

Kenneth Eckstein
Steven W. Greenwell

In Memory of Bettye C. Gregory

Sharon L. Basham
Cheryl and Shelley Basham
Tracey and Bo Johnson

In Memory of Roberta Griffin

Mr. and Mrs. Brett A. Bradbury

In Memory of Doris K. Griffith

Mr. and Mrs. David R. Biek

In Memory of Henry S. Gromski

Mr. and Mrs. Joseph Gorny
Florence Gromski

In Memory of Betty J. Grossman

Ginger and Brian Bell
Debbie Haack
Barbara and Donavon Holderread
Lowell Lemler
Linda and Jim Manring

Shady Rest

Sandy Wallace and John Thomas
Jay Warnacut Family
Joe Warnacut Family

Laura Warnacut

Linda Warnacut Trago Family
Wendell Warnacut Family
Nadine Zahm

In Memory of Katherine Elizabeth Groth

Mrs. Tracy J. Gleissner

**In Memory of Alex (Murphy) R.
Grudzinski, Sr**

Mr. and Mrs. Curtis E. Anderson
Cleveland Elementary School
Ms. Wanda M. Cone

Nancy and Darrell Eggers

In Memory (continued)

In Memory of Ralph E. Hawkins
Mrs. Darlene Hawkins

In Memory of Maxine R. Hayes
Susie Chamberlin
Marcia Dowell

In Memory of Robert (Bob) Arends Henry
Anne and Spike Abernethy
ABRO Industries, Inc.
Louise and Stephen Anella
Linda and Erwin Arends
Karen and Ron Berebitsky
Pauline and Craig Beutel
Janice and Kent Beutel
Pat Beutel
Mary and Ed Bourgeois
Pat and Jerry Brucker and Family
Business Development Corp
Jane and John Callan
Mr. and Mrs. Robert F. Campbell
Betsy and Jim Cooke
Sandy and Nick DeCicco
Barbara Dillon
Mr. and Mrs. Gregory S. Downes
Force Construction Company, Inc.
Jo and Jack Geary
Judith Grabarek
Anne and Charlie Gruenig
Mary Lou and Ed Grunawalt
Joan and Edward Hardig
Mr. John J. Harrington
Hasse Construction Company, Inc.
Ms. Kathleen A. Hersman
The Jim Hiss Family
Mary Ann and James Homrich
Kathleen and Brent Jagla
Bill Jagger
Robert Jagger
Carol and David Keckley
Koontz-Wagner Holdings, LLC
Michael Kruk
Sue and William Lamie
Elizabeth M. Lemanski
Greta and Jay Lewis
Mr. and Mrs. Carl P. Littrell
LL Geans Construction Co.
John H. Lloyd, III
Adele and Harlan Lusk
MACIAF
Carol and Bob Magor
Barry Mangus
Katrina and Tom McGovern
Mr. and Mrs. Steven McManus
Mr. and Mrs. William J. McManus
Memorial Hospital of South Bend, Nuclear
Medicine Staff
Mr. and Mrs. Dave Meuninck
Midwest Tile & Interiors, Inc.

Bob Miyagawa
Helen and Tony Muffoletto
Sue and Ted Mullett
Mr. Paul C. Nielsen
Old Fort Building Supply, Inc.
Jeannine Oren
Potawatomi Zoological Society
Joseph Probst
Rita and John Reust
Slatile Roofing & Restoration
Sharon and Ray Smith
Daniel J. Smogor
Dr. and Mrs. David L. Spalding
St. Joseph County Airport Authority
Mary Jane and Bill Stanley
Dee and Sonny Tepe
Pamela VanDreumel and Michael McManus
Polli Weber

In Memory of Thomas (Tom) Herbon
Mrs. Carole R. Herbon

In Memory of Charles (Chuck) A. Hibschman
Mrs. Deborah J. Hibschman

In Memory of Dorothy N. Hilary
Alpha Sigma Alpha
Mr. Kevin Booth
Judy Brown
Patsy and Bill Cork
Federal Highway Administration CT Division
Lynn and Casper Grathwohl
Mrs. Mary Greene
Mary Carol and John Grinnell
Sherrie and Dennis Harr
Anne and Alex Harris
HRP Construction Crew
Ann and Dick Knott
Jackie and Yves Lonchampt
Ursula and Don Mars
Ms. Colleen M. Miller
Jill and Steve Szyarto
Mrs. Linda Whitson
Mr. Geoffrey B. Whittle

In Memory of Rebecca (Becky) L. Hill
Ms. Sandra L. Stuaan
Mr. and Mrs. Mike Umbaugh
Carol and Chuck Wiegner

In Memory of Charles Winchell Hillman
Mr. and Mrs. John Mull

In Memory of Dorothy G. Hintz
Adolfson & Peterson Construction
Anonymous
Jane and Ed Baert
Sandy and Nick DeCicco
Sue and Barney DeLee
Dotty and Ren Derda
Colleen Hawkins

Mr. Thomas M. Hintz
Bonnie James
Norma and Jim Johnson
J. Paul Kendle
Geraldine Kronewitter
Greg Leyes
Lois Leyes
Tom McLaughlin
Jackie Metz
Marsha and Dennis Meuleman
Mr. and Mrs. Roger T. Nawrot
Ms. Mildred E. Nicodemus
Sarah and Paul Richardson
Susan Simler and Ann Falkner
Phyllis VanBruaene
Mary Walsh

In Memory of Gerald (Jerry) R. Hogan
1st Source Bank
Mary Ann and Timothy Abeska
Nancy and George Badgero
Jane and Ed Baert
Nita and Ray Bickel
Kathleen Brunke
Mr. and Mrs. Jack E. Clemans
Janet and David Eggleston
Judy and Ed Hardy
Mrs. Ann M. Hogan
Nancy Lisek
McCormick Motors, Inc.
Mr. Rex E. Miller
Mr. Richard A. Paull
Mr. and Mrs. Jeffery J. Petroff
Lori and John Piccininni
Mr. and Mrs. David M. Salela
Julie Smevoll
Arlene and Allen Waitkins and Family
Sue Woods

In Memory of Mary Jane Holland
Kathy Holland

In Memory of Ingrid Helen Holm
Mrs. Roberta Anderson
Ginger and Brian Bell
Mr. and Mrs. Bill Ciszar
Kim Gnade
Mr. and Mrs. Thomas L. Hayes
Mrs. Martha J. Jacobson
Patti and Ned Johnson
The Paul Kemble Family
Mr. and Mrs. Fred Koppenhofer
Mr. and Mrs. Paul E. Nye
Mr. and Mrs. Richard D. Olds
Alice Ruff
Mr. and Mrs. Bob Skoglund
Bob Skoglund, Jr
Pam and Keith Skoglund
Debbie and Steve Skoglund
Sue and Tom Skoglund

Marianne and Jeff Swaney
Mr. Norman A. Swanson
Mr. and Mrs. Don Towle
Betty Wade

In Memory of Esther A. Hooley
Anna and Dennis Hooley

In Memory of Miriam Elizabeth Hooley
Dr. and Mrs. Robert D. Slabaugh

In Memory of Patricia (Pat) J. Hoot
Best-One Retreading of South Bend
DW-National Standard-Niles, LLC
In Memory of Brandon J. Hora
Evelyn Clark and Tom Clark

In Memory of Anna (Ann) L. Horning
Jean and Harold Carothers
Donald Horning
Jane Horning
The Brian Rodgers Family
Helen Sharpe
Betty and Don Wesolowski
Susan and Mel Wood

In Memory of Harry (Bugeye) L. Hostetter, Jr
Bristol American Legion
Mr. and Mrs. Richard Gaddis

In Memory of John David Houk
Mr. and Mrs. James E. Houk

In Memory of Patrick J. Houk
Mr. and Mrs. James E. Houk

In Memory of Richard J. Houk
Mr. and Mrs. James E. Houk

In Memory of Rodger L. Hover
Colleen Kubacki

In Memory of Marlene Huber
Ms. Jacqueline S. Speedy

In Memory of Bruce K. Hudson
Vince Barletto
Marilyn Bertolini
DLZ Indiana, LLC
Lynne and Dave Fischgrund
Barbara and Ken Johnston
Sherri and Rusti Owens
The Brian Rodgers Family
The Spinato Family
Isabel Stickley

In Memory of James (Jim) B. Huff
Mrs. Loretta J. Huff

In Memory of Ardes Hugdahl
Sharon and James Cohen

In Memory of Mary Jane Hughes
Jerry Fawley and Marion Taylor
Sue and Jim Feece
Geraldine Gorsuch
Mr. Ronald K. Hughes

Mr. and Mrs. Kelly L. Rose
Beth and Ron Tharp
TMC Group, Inc.

In Memory of Aloysius (Sonny) K. Humphrey
Cousins in the Arizona Territory
Mr. and Mrs. Lawrence A. Nelson

In Memory of William (Bill) A. Huneryager
Mrs. Betty L. Huneryager

In Memory of Carmy L. Hurtle
Nancy Hurtle

In Memory of Kristen Valek Hutton
Mrs. Theresa T. Fry

In Memory of Casimer Hyduk
Mr. and Mrs. Greg A. Hyduk

In Memory of Paul Hyduk
Mr. and Mrs. Greg A. Hyduk

In Memory of Charles E. Ibbotson
Lester Berger

In Memory of Helen E. Janczak
John Swantz

In Memory of Helene Janowski
Ms. Diane Gooding

In Memory of Robert Allen Jarema
Robert Buikema
Cardiovascular Recovery, Elkhart General
Hospital—Denise Beckford, Stephanie
Dimitraff, Rick English, Dr. Halloran, Kris
Johnston, Jenny Maffett, Kathy Maurin,
Todd Rathii

Sandy Fancher
Brenda Rex

In Memory of Chester J. Jaworski
Nancy and Jordan Frankiewicz

In Memory of Clara Jaworski
Crystal and Norman Clear
Nancy and Jordan Frankiewicz
Joan Jaworski

Mary Jo and Jim Koran
Carolyn and John Reed
Sandra Reed and Tom Minchk
Carol Lee and Dan Vanatta
Mary and Ed Willamowski

In Memory of Sybil M. Jennings
Vera Church
Patti Couch
William Geyer

Karl Weis Auto Body Shop Friends—Gary,
Dorothy, Dennis, Sharon and Crew

Stephanie Pasman
School of Communication, Illinois State
University
Rose and Ray Sebelski
Karin and Wayne Thomas

In Memory of Larry A. Jester
Anonymous
Kathy and Dennis Burgess
Mr. and Mrs. Lawrence J. Grembowicz
Ms. Susan M. Hall
Ms. Jody M. Harmacinski
Ms. Deborah L. Nyikos
Ms. Laurie B. Pierce
Evelyn J. Shilts
Mr. and Mrs. Kenneth E. Staszewski
Helen VanGundy

In Memory of Gary T. Jewell
Beverly Steele

In Memory of Robert A. Joachim, Jr
Mr. and Mrs. Larry J. Hauguel, Sr

In Memory of David Alan Johnson
The Fowler Family

In Memory of Evelyn M. Johnson
Ms. Pamela K. Stephenson

In Memory of Leonard E. Johnson
Emmanuel Camus
Crowe Horwath, LLP
Mr. and Mrs. Jack R. Darr
Carol and Jerry Ehret
Gibson Insurance Agency
Ms. Sandra R. Glasgow
Mr. Drew Johnson
Martha and Larry Johnson
Minge and Scott Johnson
Mr. Stephen C. Johnson
Sue and Rick Minegar
Mr. and Mrs. Linuce C. Pang
R. L. Boden and Associates, Inc.
Mr. Carl T. Rittberger
Marjo and Warren Robbins
Lea Shearer
Leslie Stephenson
Pamela K. Stephenson
Amy and Tom Yoder

In Memory of Lewis Ward Johnson
Lucille Hazen and Family

In Memory of Georgia Lee Johnston
Mr. and Mrs. Ray Behling

In Memory of Robert (Bob) D. Jolliff
Lorraine Lawecki

In Memory of Evelyn M. Jones
Rosemary Collins
Lucy Fitch
Mrs. Bridget Collins-Sullivan

In Memory of Dorothy M. Jozwiak
Geri and Paul Coughlin
David Jozwiak
Liette and Scott Shonborn and Family

In Memory of Max M. Juday
Mr. and Mrs. Ray Behling
Elkhart Central High School Faculty
Mary and Tom Lister

In Memory of Anna Clara Kadish
Janine and Richard Hauguel

In Memory of Leokadia (Leona) Karasiak-Dyczkowski
Rosa Alvarez
Judy Bikowski
Annie and Tom DeBaets
Dorothy Demeter
Delphine and Jerry Glaser
Helen and Dave Hoffman
Carol Bilinski and Tom Leszcz
Nan and Don Monhaut
Bernice Niezgodski
Mr. and Mrs. Alan D. Rhodes
Mary Ann and Richard Winkel

In Memory of John W. Karkiewicz
Mrs. Patricia Karkiewicz

In Memory of Carl Steven Kasa
Melissa and Robert Carrico

In Memory of L. (Betty) Elizabeth Kasa
Melissa and Robert Carrico

In Memory of Steven (Steve) Mark Katz
Barbara and Kenneth Fedder

In Memory of Joan R. Kazmierzak
Mrs. Kathleen Brown-Gucwa
Mrs. Rose Chodzinski

In Memory of Marita L. Keirnan
Anonymous
Lori and Bill Broecker
The Cencelewski Family
Mary Beth Engel
The Engle Family
Mary Niezgodski
Jonathan Whitmer
Kathy Whitmer
Amy and Ron Zehner

In Memory of Terrance (Terry) Michael Kelly
Dr. and Mrs. Gary B. Fromm

In Memory of Phyllis M. Kendle
Larry Kendle

In Memory of Claudia P. Kent
Claudia and Jack Dixon

In Memory of Daniel L. Kilgas
William C. Boggess
Michelle D. Howell
Peg and Greg Lyzun
Joyce and Bob Williams

In Memory of Ronald (Ron) E. Kinch
Anonymous
Ann and Tom Balcerzak
Marsha and Jim Caldwell
Laura and Mike Chrispyn
Sandy and Nick DeCicco
Kathy and John Kantorowski

Carolyn and Mick Lannoo
Patricia Pierpont
Bill and Mike Pratt
St. Joe Valley Street Rods
Mr. and Mrs. Edward Tucker

In Memory of Allene M. King
Mr. and Mrs. Bob Dedoes

In Memory of Doris E. King
Anonymous
Ms. Caroline Beutter
Community Casket Company, Staff
Mr. and Mrs. Steven A. Crawford
Eileen
Debbie Kruyer
Mr. and Mrs. David B. Millar
Dorothy Peterson
Maria Porter
Shari and Neal Wagner
Donna and Bill Wagoner

In Memory of Tom King
Deborah and Robert Strzelecki

In Memory of Marie Klausing
Byra Warner and Family

In Memory of Gertrude C. Klimowicz
Dorothy A. Chmiewski

In Memory of Barbara Irene Klopfenstein
Mrs. Marjorie Grannell
Mr. and Mrs. Thomas Keller and Family
Mr. and Mrs. Jerome C. Lawlor
Lila Merrick and Rose Marie Kaseweter
John Swantz

In Memory of Dean D. Klopfenstein
Mrs. Penny Lindorf

In Memory of Richard M. Klosowski
Chris and Jim Klosowski

In Memory of Gregory E. Koch
Joan K. Fahey
Mrs. Kaye A. Koch

In Memory of Bryan Todd Kolski
Vivian Benjamin

In Memory of Carole Koontz
Ms. Mary A. McIntyre

In Memory of Donald (Doc) D. Koontz
Mr. and Mrs. Allen H. Cummins
Beatrice Drake
Mr. and Mrs. Robert Eley
Mary Jane Faurote and Dale Neidlinger Family
Mr. and Mrs. James Kiegel
LaPaz High School Class of '46
Sharon and Dave Leathers
Jackie and John Morrical and Family
Mr. and Mrs. Wallace Neumann
Florence Perdue
Plymouth High School

Mr. and Mrs. Homer Seltenright
Irene and Mike Taylor
Wallace M. Philo, Jr. Trucking & Excavating
Judi and Jeff Yates and Family
Nancy and Jim Yates and Family

In Memory of Chester J. Kopczynski
Kimberly and Gary Kopczynski

In Memory of Natalie Kopinski
Mrs. Sharon Waggoner

In Memory of Nancy (Nan) Ann Kovach
Joan K. Fahey

In Memory of Stephen (Steve) J. Kovach
Mrs. Norma J. Datena
Mr. and Mrs. Jack M. Freel
Louis Koloszar
Jill M. Kovach
Mr. and Mrs. Brian A. Levan
Carry Maternowski
Ms. Amy Murray
Susan and Robert Sellenberg
Mr. and Mrs. John M. Stenger, Jr
Jode and Tom Szymarek
Marcia Vargo
Linda and James Wickizer
Sara Witt
Mr. and Mrs. Thomas L. Zmyslo

In Memory of Alex J. Kowalski, Sr
Paula and George Heiser
The Lawson Family
The Michael Moriarty Family
Karen Niemann
St. Stanislaus Kostka Ushers Club
Mr. D. J. Tehl
Rose and Al Zmyslo

In Memory of Mary Kraemer
Rosemarie and Charles Bradford

In Memory of Elizabeth (Betty) A. Krieg
Elaine Kleva and Family
Ed Wroblewski
Lawrence Wroblewski
Tim Wroblewski

In Memory of Helen Louise Kronewitter
Sandra L. Hamman
Barb and Bob Jordan Families

In Memory of Roger L. Kronk
Paula and Alan Limerick

In Memory of Christopher James Krug
Mr. and Mrs. Gerry E. Bidlack

In Memory of Raymond Krych
Joanne M. Grzeskowiak

In Memory of Ray Nelson Kryski
Pat and Bob Sloan

In Memory of Milos Kubat
Dawn Moffett

In Memory of Mary Ellen Kubiak
Mrs. Mary Jo Kubiak

In Memory of Dorothy M. Kubsch
Shirley and Michael Johnson
Bobbette Jones
Helen Konstanty

In Memory of John C. Kucharski, Jr
Anonymous
Patty and Jeff Fleischman
Wanda Jackowiak
Ms. Vicky B. Whicker

In Memory of Nipa Yai Kumwong
Mr. and Mrs. Michael Boardley
Cindy and Greg Haradine
Jamie and Jeff Haradine
Shirley Hartnagel
The Jordanich Family
The Keeslar Family
Mr. Daniel P. Knezevic
Mr. Michael A. Lacognato
The Stabnik, Sesterhenn, Matheos, Fessenden,
Petty, Butler, Nayhee, Emily Families

In Memory of Marvin (Marv) Martin Kwiecinski
Tonya and David Adamson
Doris Joan Chamberlin
Shirley and Charles Eaton
Sal Gerschoffer
Robert Grauel
Ms. Rita Harper
Brent and Mary K. Heffner
Mr. Bert Klysz, Jr
Paul Kwiecinski's Friends
Mr. and Mrs. Ronald J. Kwiecinski
Mary Jo Mankowski
Ms. Barbaradine McCuddy
Carolyn McCutcheon
Mrs. Grace L. Smith
Janine and Lyle Smith
Mr. and Mrs. Brian A. Wroblewski
Roxanne and Dennis Wroblewski
Ed Wroblewski
Lawrence Wroblewski
Tim Wroblewski

In Memory of Thomas Richard LaFree
Mr. and Mrs. Dino Anagnos
Judy Cantwell
Mr. Robert H. Kemp
Lynn LaFree
Karen Lemmon
Mr. and Mrs. Gary L. Main
Mr. and Mrs. David J. Muir

In Memory of John E. Lambo
Diane and John Martin

In Memory of Vincent Lambo
Diane and John Martin

In Memory of Virginia Lambo
Diane and John Martin

In Memory (continued)

In Memory of David C. Langenderfer, Jr
Mrs. Norma Langenderfer

In Memory of Bronislaus (Bert) J. Lapkiewicz
Theresa Sikorski

In Memory of Caroline Lapkiewicz
Theresa Sikorski

In Memory of John E. Larkin, Jr
Mrs. Sharon E. Nyberg

In Memory of Francis (Frank) Martin Laskowski

Anonymous
The Beaudoin and Jankowski Family
Mr. and Mrs. Jose M. Carrera, Jr.
RoseMary and Don Carroll
Kevin Carroll

Tina and Michael Deren
Susan and Joel Friesner
Mr. and Mrs. Tom Gerhold
Mr. and Mrs. Joseph A. Horvath
Ellen, Carl and Garrett Jungck
The Children of Frank Laskowski

Joni and Jim Liebizinski
Mr. and Mrs. Anthony Magaldi
Ms. Ellen L. Maher
Ruth Regina
Mr. and Mrs. John S. Reihl

Louie Seago
Susan Seagrove
Mr. and Mrs. Gary A. Sosinski
Jane and Gary Stearns
Ms. Mary T. Treanor
Ms. Jean Willems
Mark Willems

In Memory of Earza Lasswell
Dr. and Mrs. John P. Eichorst

In Memory of Dorothy Laurie
Priscilla Beaver

In Memory of John Edward Lawecki
Mrs. Kathleen L. Lawecki
Tommy Marshall

In Memory of Gary P. Layden
Violet Layden
Thomas Parsons

In Memory of Ruth H. Lehr
Geraldine Kronewitter

In Memory of Lodella M. Leininger
Mary Ann Norris

In Memory of Eva (Bertie) Roberta Lenox
Patricia Bell
Sandra Duwe
Robin and Jack Gardner
Louise and Charles Inbody
Bee and Jim Jones
Bev and Jim Kuhn

Mr. Gary Lenox
Barbara L. and John H. Martin
Mr. Daniel C. Meyer
Sherry and Larry Moore
Karen Nicholson
Pickwich Condo Association Neighbors—Cindy Creighton, Susan and Brian Lee, Helga Patcheah, Irene Snowden, Vernabelle and Miller Stayrooh, Joan Zehr
Jimmie Queener

Mr. and Mrs. Wayne P. Stutsman
Pamela and Bill Templeton
Darla Tweedy
Mr. and Mrs. David R. Vollmar
The Wehrly Girls—Deb Howell, Kim Williams, Terri Williamson
Anne Wilson

In Memory of Belinda J. Leonard-Morris
Beer & Slabaugh, Inc.
Mr. Joseph L. Blair
Kaye Brown
Mrs. Betty Jo Carr
Cornerstone Business Services, Inc.
Lora Davis and Sarah Davis
Daniel L. Eakins
Ron Eakins

Jean Gregorich
Pam Haas, Bev, Joan and Mary
D'Ann and Tom Rambo
The Renner Family

In Memory of Evelyn Leszczynski
Mr. Gerald S. Leszczynski

In Memory of Susan Marie LeVeque
Mrs. Carol J. Case
Donna and George Hertz
Mrs. Pamela A. Hurst
Kay and Paul Johanson
Carol and Fred Kuss
Loanna and Dick Rockstroh

Priscilla Beaver
Mr. Albert G. Schreiber, Jr.
Janine and Quinto Squadroni
Alice and Dado Vernasco

In Memory of Thomas L. Lewandowski, Sr
Jessica and Pedro Galacia
Melissa and Wade Hertsel
Barb and Phil True

In Memory of Alice V. Libey
Eldie and Bert Dillman
Mr. and Mrs. Michael L. Wurn

In Memory of John J. Light
Chris Badowski
Janine Dudzinski
Mr. and Mrs. Michael Eghyazi
Gardeners' Guild, Inc.
Ms. Nancy M. Kominkiewicz
Mary Virginia Light
Jodi Sass

In Memory of Evie Limberg
David M. Limberg

In Memory of Eloise Lindley
Mr. John Lindley

In Memory of Clem J. Liniski
Janice Allsop

In Memory of Darlene Marie Lisek
1st Source Bank, Personal Asset Management Group
Barbara Botka
Nancy M. Coughlin
Mr. and Mrs. Melvin R. Divine, Jr
Sharon and Gerald Flanagan
Mr. and Mrs. James D. Gardner
Beth Gudeman
Debbie and Les James
Mrs. Susan Makowski
Mr. and Mrs. Robert W. Manuwal
The Richard Mroczkiewicz Family
Ms. Julia M. Smith
Teachers Credit Union, Commercial Lending Dept

In Memory of Mary B. Lisowski
Marilyn and Dan Craft
Mr. Paul C. Lisowski

In Memory of Clem H. Litka, Sr
Walter Gromski
Catherine, Sue and Terry Kazmierczak
Ms. Irene Nesbit

In Memory of Susan (Suzy) Kay Long
Donna and Don Alexander
Amanda Bannow and Sharon Coldiron
Bonnie and Dean Brubaker
Mr. and Mrs. Thomas Frey
Mrs. Bonnie J. Getchell
Kathy Kenna
Betty Molnar
RE Carroll Employees
John Robakowski
Marlene and Dale Schultz
Dolores Turnock
Vera and Don Whisman

In Memory of Mary A. Losee
Mindy and Dan Bisig Family
Kathy Goodman and Family
Cheryl and Jeffrey Losee Family
Lois A. Losee
Marcia Losee

In Memory of Mary Ellen Lounsbery
Jean and Robert Miller

In Memory of Loved Ones
Ms. Frances E. Buysse

In Memory of Mablene Lovelady
Community Casket Company, Staff

In Memory of Patricia A. Lowe
AT&T Telecom Pioneers South Bend

In Memory of Marjorie L. Lower
Martha and Joe DeMike
Mr. and Mrs. Gary P. Smith
Linda and Dick Williamson

In Memory of Carl E. Loyd
Mr. and Mrs. Harold E. Moberg

In Memory of Donald J. Lueth
Mrs. Hattie L. Lechltner

In Memory of Kenneth L. Luse
Mrs. Mary A. Luse

In Memory of Richard (Dick) Carl Lymangrover
Pam and Dave Wickham

In Memory of Richard (Mike) Michael Mackey
Mr. Brian W. Greve

In Memory of Lillian A. Maguire
Mr. Joseph Maguire

In Memory of Camiel Cyriel Mahank
Mary Mahank Barnes

In Memory of John Morgan Mahoney, Sr
Mary C. Brockie and Family
Ms. Pat Bryan
The Arlen Bussie Family
Rosa and Greg Chavez
City of Elkhart Public Works and Utilities
Tina and Michael Deren
Andrew Eghyazi and Taryn MacFarlane
Nilene A. Ferro
Peggy and Dick Kelley
Colleen Kubacki
Mrs. Marilyn E. Mahoney
Heather and Joe Milroy
Gerry and Jerry Schpok
Marion Mahoney Vogl

In Memory of Larry D. Maier
Mr. Sidney L. Foster
Ms. Tania Shaum

In Memory of Billy L. Main
Mr. and Mrs. David A. Baldwin
Mr. and Mrs. Michael G. Barney
Mr. and Mrs. Richard L. Ellis
LaSalle Bristol Corp

Mr. and Mrs. George R. Lutz
Alissa and Terry Martynowicz
Midwest Orthotic Services, LLC
Joyce Ward

In Memory of Dorothy A. Makely
Sharon and Morris Jones

In Memory of Katherine Malsam
Mr. and Mrs. Anthony N. Michel

In Memory of Lawrence (Larry) L. Malstaff
Tonia and Bryan Albright
Mr. and Mrs. William Malstaff

In Memory of Sophie Mandich
Mr. and Mrs. Kevin M. Witkowski

In Memory of Delores L. Manuszak
Mrs. Martha G. Holston

In Memory of Walter Eldon Mark
Mrs. Mary Jane Mark

In Memory of Kathleen (Kathy) I. Marshall
Ms. Joan M. Arbogast
Mr. and Mrs. Roger L. Burks
Ms. Donene Turner

In Memory of Robert W. Marshall
Sharon Marshall

In Memory of Leonard B. Martin
Mrs. Rhoda Martin

In Memory of Alice S. Martinczak
Carole and Clifton Grimm

In Memory of Janet Lee Martino
The DeReines Club
Grace Myers

In Memory of Charles M. Maternowski
Mr. and Mrs. John E. Broden

In Memory of Aro Mathias
Helen and Ralph Wituski

In Memory of Ruth M. Mayerhofer
George Mayerhofer
Stephanie Pasman

In Memory of Genevieve (Jean) McCaige
Mrs. Gloria Walkowiak

In Memory of Dolores (Dee) McCann
Mr. James W. McCann

In Memory of James D. McCann
Mary L. Wilfing

In Memory of Terrance (Terry) R. McCann
Yolanda and Richard Collins

In Memory of Jerry B. McCarty
Mr. and Mrs. Donald J. Brody
Linda and Rex Canfield
Bonnie and Chuck DeMeyer
Dorothy and Kenton Fisher
Diane and Harold Foster

Mr. and Mrs. George R. Lutz
Alissa and Terry Martynowicz
Midwest Orthotic Services, LLC
Phyllis and Lew Mudd
Gary Payne
Diane and Jack Payne
Rose and Ray Richmond
Beverly Schmidt
Anne and John Schrader
Mr. and Mrs. Kenneth E. Schutze

In Memory of Leo Hugh McCormick, Jr
Carole McCormick

In Memory of Herbert Wayne McDonald
Jeanne and William Dosmann
Nancy and Harry Foy
Kathy and Greg Heeter
The Jim Heeter Family
Mrs. Helen McDonald
Joan and John McLane
Ms. Suzanne M. Odle
Cindy and Bob Oldenburg

In Memory of Raymond (Ray) J. McFadden
Tami and Tim Calhoun
Dr. Isabel Charles
Joseph M. Doherty
Gratia Eades
Kathleen Jacobs
Mr. and Mrs. Steven M. Kin
Jessica and Myke McBrier
Margie and Ed McFadden
Jean and Harold McFadden
Mr. Joseph J. McFadden
Ms. Gladys G. Merkle
Pat Moriarty
Molly, Tessa, Debbie Schrager
Dennis Stark
Wilfrid Stoeckinger

In Memory of Albert McGoogan
Mr. and Mrs. Arden R. Pruett

In Memory of Betty Jane McKelvey
Annette and Dave McKelvey

In Memory of Jack McKelvey
Annette and Dave McKelvey

In Memory of Donald (Donnie) Robert McNamara
Kay Pote

In Memory of Elizabeth A. McNulty
Artemis Hoke

In Memory of William (Bill) Howard McPhail
Sara and William Czirjak
Jan and Terry Hartzler
Pauline Reinking

In Memory of Ruth M. McQueeney
Ms. Jan Conway
Mr. and Mrs. Warren Eidsness
Mr. and Mrs. Robert Garoutte
Mr. and Mrs. Michael Gerkin
Eloise and Joseph Granada
Mr. and Mrs. Donald Gronewald
Mr. and Mrs. Clark Hensell
Mr. and Mrs. Richard Keller
Mr. Bob G. McQueeney
Mrs. Mabel S. Muller

Mr. and Mrs. Dennis Peters
Patricia and Dean Skaggs
Mr. and Mrs. Robert D. Tucker, Jr

In Memory of Dorothea McQuisten
Kandi and Rich Kennedy
Old Fort Supply Company, Inc.

In Memory of Ann E. Megan
Rose and Steve Ciszczon
Mr. Roger Reinhardt
Deborah and David Singleton

In Memory of Robert (Bob) J. Megan
Ann E. Megan

In Memory of Frederick (Fred) W. Meissner
Marty Young Meissner

In Memory of David J. Meixel
Mr. and Mrs. Steven K. Reinhart

In Memory of Jack D. Melton
Bea and Don Ansbrough
Mr. and Mrs. Mike Bramlett
Ms. Barbara A. Candler
Champion Tool & Engineering
Ms. Nancy Chiszar
Rita and Chuck Chrisos
The Dobson Family
Leona Donovan
Mr. Trevor Foley
Laurie and Russ Golden
Greg Grzesk
James Haney
Maggie and Terry Jacobsen
Jan and Lloyd Johnson
Mr. and Mrs. John M. Kennedy
Mr. and Mrs. David F. Miller
Veronica Niedbalski
Ms. Karen Pilarski
Mallary, Jody and Jeff Toner
Washington Clay Class of 1950

In Memory of Beverly L. Metz
Reverend and Mrs. Robert Beyler
Kathy and Jerry Hoover
Mr. and Mrs. Dennis McKenzie
Judy Miller and Family

In Memory of Michael E. Milewski
Mr. and Mrs. Marvin E. Milewski

In Memory of Betty L. Miller
Melissa and Robert Carrico
Harold Myers
Mary Jane Preston

In Memory of Clement Michael Miller
Mr. and Mrs. Mike Miller

In Memory of Edith Mae Miller
AT&T Telecom Pioneers South Bend
Becky Kizer

In Memory of Jonas L. Miller
Mary E. Miller and Family

In Memory of Kenneth (Kenny) Harley Miller
Anonymous
Kathy Bakos
Dorothy Bartley
John Bartley
Kay and Terry Beyer
Mrs. Anne D. Cappert
Colonel and Mrs. Robert W. Cerney
Mr. and Mrs. Donald M. Dice
Leona Donovan
Janell Emerson and Family
Norma J. Falco
Mr. and Mrs. Glenn Hara
Theresa and Jay Hinshaw
Sherry and Jon Housand
Mr. and Mrs. Gordon L. Hug
Mr. and Mrs. James D. Hummell
Mrs. Patricia Karkiewicz
Mr. and Mrs. Joe Kolo
Homer S. Kovacs
Virginia LaCroix
Mrs. Thelma Lee
Sue and Mark Lillie
Michele and Wayne Miller
Bill Morehouse
Mr. and Mrs. James Murphy
June and Ed Nowoeke
David Piser
Pat and Dan Plencner
Mr. and Mrs. Eugene Sacco
Robert Seifert and Kay Colip
Hannelore Slayton
Pat and Hugo Tomchak
Patricia Waldron
Helen Wolf

In Memory of L. B. Miller
Joan Skinner

In Memory of Mary Louise Miller
Mr. and Mrs. Mike Miller

In Memory of Robert E. Miller, Sr
Blue Green Travel Services

In Memory of Will (Bill) A. Miller
Mrs. Criscilla F. Miller

In Memory of William David Miller, Sr
Burkhart Advertising, Inc.
Sharan and Dan Dale
Eileen Miller
Sara Miller
Sharon and Joe Wawrzyniak

In Memory of Daniel Quinn Minter, Jr
Norma and Walter Shuurr

In Memory of Margaret (Peggy) E. Mishler
Michelle and Jim Becker
Sue and Richard Berger
Jan and Walt Breske
Patty and Jeff Fleischman
Elizabeth and Kent Hizer
Judy and Pete Jank
Mr. Richard Kamel
Sarah and Victor Kubischek
Carolyn and Mick Lannoo
Judy Lehner
Patricia Minniear
Cammie and Thomas Minniear
Ron Pozzi
Debbie and Allen Pritchard
Jackie Rinehart
Dennis Stark
Mr. and Mrs. Maurice L. Yergeau

In Memory of Stanley Miskowicz
Mr. Bernard J. Miskowicz

In Memory of Elmer (Mitch) Roy Mitchell
Esther Mitchell

In Memory of James William Mitchell
The Tom Jellison Family

In Memory of Ronald (Ron) Allen Mitts
Barbara Matuszak and Terry Wozniak

In Memory of Valerie Irene Mlynski
Nancy and Wil Boren

In Memory of Jeanette Moeller
Betty and Dean Argersinger
Catherine and John Hiler
Judy and Chuck Hofer
Kathleen and Bill Hojnacki
Mr. and Mrs. Leo Kelsch
Theodora A. Kolettis
Leila and Bill Lawson
Marcy and Alan Mangus
Patricia and Richard Rice
Marilyn and Dr. John Toepp
Connie and Randy Varga
Mindy and John Ward

In Memory of June M. Molenda
Mr. and Mrs. Michael J. Becsei
Carolyn and Rich Coddens
Carolyn and Larry Garber
Mr. and Mrs. Robert L. Geisler
Cheryl and Robert Geisler
Ms. Lenore Gentner
Mr. and Mrs. Leonard E. James
Shirley Massing

George Radman
Mr. and Mrs. Richard Rosenstein
Steve Spencer

In Memory of Benjamin T. Moleski
Shirley and Tim Schneider

In Memory of Floyd F. Moon
Melinda A. Moon and Thomas Clayton

In Memory of Agnes Moore
Judy and Larry Denton

In Memory of Edward David Moore
1st Source Bank, Branch Administration
Jocelyn Dempsey
Patricia R. Durlacher
The Rich Faltynski Family
Kruggel, Lawton & Company
Kathy and Jim Laskowski
Julia and John Mahon
Kathy and Jim Nobles
Lenore and Richard Roarke
Lisa and Don Squibb
Lisa, Michelle and Bill Stockberger

In Memory of Guy Earl Moore
Judy and Larry Denton

In Memory of Lewis R. Moore
Mrs. Dorothy Callahan
Rose and Bud Master
Joyce and Arthur Moore
Jeannie and Mike Orr

In Memory of Lloyd Moore
Judy and Larry Denton

In Memory of Mary Jo Moore
Mr. and Mrs. Bob Slaughter

In Memory of Carolyn C. Morrical
Mr. and Mrs. John E. Broden

In Memory of Luella Marcille Moyer
Arlene and Richard Roth

In Memory of Brandon Mowery
Carmen Mowery

In Memory of Richard (Rich) L. Mueller
American Legion Post #253
Menno Travel Service

In Memory of Howard James Muldoon
Mr. and Mrs. Christopher Hess

In Memory of Jonas Mullet
Ina Mullet

In Memory of Charlene Diane Muncy
Helena and Harvey Bak
Mrs. Gloria Walkowiak

In Memory of Helen Louise Murray
Michelle and Jim Becker

In Memory of Marshall Murray
Mr. Mark M Murray

In Memory (continued)

In Memory of Martha N. Murray

Ms. Martha M. Barton
Mr. and Mrs. Dennis W. Beville
Mr. and Mrs. James R. Brotherson
Mr. and Mrs. Corey D. Cressy
Nora K. Crosen
Ms. Melanie Davis
Vickie DeBerry
Julie Englert
Grubb & Ellis/Cressy & Everett
Ms. Reta J. Gullett
Mr. Kermit Hartley
Catherine S. Hiler
Mr. and Mrs. Karl E. Holderman
Becky Kizer
Kim Lintner
Ms. Amy Kuhar Mauro
Sara Miller
Mr. Mark M Murray
Mr. Stephen P. Nani
Mary Newbold
Ms. Darlene Nolen
Mr. and Mrs. Terry J. Rodino
Cynthia Searfoss
Cindy Siebert
Roberta Spencer
Mr. and Mrs. Richard Streffling
Amy Tribbett
Wendell W. Walsh
Mr. and Mrs. Michael J. Wargo
In Memory of Paul Muszik
Mr. and Mrs. Frank J. Sullivan, Jr
In Memory of Linda R. Myers
Mr. Joseph L. Myers
In Memory of Mary Jane Myers
Mindy Davenport
In Memory of Melvin (Mel) L. Myers
Nona and Jim Allen
Rose and Mike Allen
Annette and Steve Brown
Valda and Charles Collier
Lise and Chuck Collier
Deborah and Tim Collier
Mary Ellen Coyne
Mr. and Mrs. Ronald A. Crites
The Crowder Family
Jill and Kenton Ervin
Mr. and Mrs. Harold L. Hammack
June and Ray Hathaway
Laurie, Bev and Rex Hathaway
Lynn and Dan Herendeen
Mr. and Mrs. John E. Legg, Jr
Mr. and Mrs. Thomas R. Lewis
Beth and Mike Patty

In Memory of Irene (Renie) Nadon

BBB's – Ladies Night Out Group
In Memory of James Harold Naus, Jr
Mr. and Mrs. John B. King, Jr
In Memory of George Nemeth
Mr. William Nemeth
In Memory of Flora Ann Nemeth-Vernasco
Rosemary DePastine
Alice and Dado Vernasco
In Memory of Frederick A. Neuliep
Grace and Victor Diamond—Edith, Bill, Sue,
Ruth, Jim, Carol, Steve, Jody, Jeff, Doug,
Dan
Mary and Jerry Freeman
Carol and Bill Griffin
Diana and Ken Jasinski
Lori and Chuck Kelly
James Lindsey
Judy Machota
Georgene and Glen Murphy
Dixie and Bob Schneider
Mr. and Mrs. Milton Schroeder
In Memory of Manuel (Ed) E. Newman
Lester Berger
Mrs. Gracie A. Freed
In Memory of Gertrude V. Niedbalski
Mrs. Mary Anne Niedbalski
In Memory of William P. Nietz
Mrs. Rose Mary Nietz
In Memory of Paul Norris
Mr. and Mrs. Tom Gerhold
In Memory of Richard P. Nowacki
Leona Bentkowski
Nancy and Kevin Bikowski
June Kucharski and Stanley Bikowski
Patricia Chrzan and Family
Debbie and Mike Clymer
Mr. and Mrs. James F. DeBoe, Sr
Candyce Discavage
Nancy and Jim Dukai
Anne Gapczynski
Angela and Damon Hummel
Joan and Frank Kasprzak
Verna Kubisiak
Billie and Robert Lemanski
Paul Locsi
Sharon Menczynski
Pat and Don Nemeth
Aurelia Nowacki
Julianne Nowacki
Mr. and Mrs. Robert Nowacki
Theresa Sikorski and Stanley Grohowski
Marcia Vargo
In Memory of Peggy Nufer
Mr. Martin J. Kerwin

In Memory of Betty J. Nutting

Basney Imports
Mrs. Patricia S. Beitelshees
R. Odette Cassis
The Curran Family
Sherry and Bill Edwards
The Donna Finn Family
Marie Kash
Ms. Carol B. Miller
Marje and Ron Reynolds
Mr. and Mrs. Terry J. Rodino
Bonnie and David Shanholt
Ms. Yvonne A. Taylor
In Memory of David W. Nutting
Peg Kelley
Sue and Rick Lewis
Marcia and Michael Roark
Marci and Timothy Roark
Lenore and Richard Roarke
In Memory of David (Dave) A. Nyberg
Mr. and Mrs. Raymond Barson
Gayle and Robert Carr
Mrs. Mary Jo Kubiak
Mr. and Mrs. Michael L. Laatz
Mr. and Mrs. John A. McKelvey
Mrs. Sharon E. Nyberg
Dottie VanParis
Mary Ann Waechter and Jerry Waechter
In Memory of Dorothy Louise Nye
Ms. Susan L. Nye
In Memory of Jeanette A. Nye
Paul B. Glass, DDS
In Memory of Frances Oakes
Donald Oakes
In Memory of Helen Olson
Dr. Jane M. Nani
In Memory of Arturo (Arthur) M. Ortega
Anonymous
Mr. and Mrs. Michael M. Schmitt
In Memory of Lore Ostertag
Marie Weiss
In Memory of Jessie Outland
Mr. and Mrs. William Mellish
In Memory of William E. Overhulser
Mrs. Betty L. Overhulser
In Memory of Robert C. Overpeck
Ms. Karma Williams
In Memory of Doris Ariene Paffenbach
Diane and Tom Watson
Deb and Debbie Wisowaty
In Memory of Mary Pappas
Beverlie Beck
Mr. Louis J. Behre
Nia Cortese

In Memory of Arthur L. Pixley

Friends at Fairington Apts.
Ms. Mabel Rupwright
In Memory of Louise A. Pletcher
Miriam Nolan
In Memory of Patricia (Patty) Donovan Plym
Avery and Don Craven
Margaret and Ted Dawson
Ann Korb
Mr. and Mrs. Ross J. Mangano
Mr. and Mrs. Dan McElroy
In Memory of Vincent (Cody) Poczik
Ms. Betty Baker
In Memory of Bonnie L. Porter
George Porter
In Memory of Maurice (Tom) T. Pozzi, Jr
Lynn Lightner
In Memory of Robert (Bob) L. Pozzi
Anonymous
Mr. and Mrs. Richard G. Bruder
Phyllis and Joe Catanzarite and Family
Pam and Ken Derksen
Kellie and Scott Greene
Elaine Holowatuk and Family
Ms. Krista Howell
Ms. Carol J. Hullings
Pat Kulczar
Tim Kulczar
Julie Louderman
Patricia Minniear
Mr. and Mrs. Douglas A. Moore
Pat's Colonial Pub, Maury's Pub Crew
Richard Pozzi
Ron Pozzi
Diane and Bob Robinson
Robbie Robinson
Pat and Ted Sauerbeck
Mr. and Mrs. Mark S. Scheiber
Lynn Scott
Fred Steif
Mr. and Mrs. Roger VanArsdale
Judith Wade
Judy and Fred Walter
Mr. and Mrs. Thomas A. Walter
Karen and William Weber
Mr. and Mrs. Patrick S. Wilson
In Memory of David R. Prentkowski
Mr. and Mrs. Jim Alt
Sue Alt's Friends and Co-Workers
Joe Bleich
Vicki and Bill Bukowski
Lisa and Alan Butt
Irene Chwalek
Ted Chwalek
Lynn and Rick Drzewiecki

Trisha Durham
Mr. and Mrs. Norbert I. Gapczynski
Cindy and Ron Glon and Family
Helen Golubski
Marilyn and George Krueger
Linda Laffin
Lane's Dairy Queen, Inc.
Deb and Mike Low
Mr. and Mrs. Eugene J. Pauszek
Patrick Pauszek
Mr. and Mrs. John T. Pence
Sandy Pfeifer
Mr. and Mrs. Leonard S. Prentkowski
Wanda Prentkowski
Donna and Jim Quickstad
Red Zone, Inc.
Betsy and Cam Schauf
Mr. Daniel Skendzel
Claire and Richard Stefaniak
University of Notre Dame, St Michael's Laundry
Mrs. Lyn Urgonski
Wilson Htg. Softball Team, Battell Senior
League

In Memory of Thomas (Tom) L. Price

Mrs. Pamela J. Price
In Memory of Alvin L. Prince, Sr
Carolyn and Bruce Carpenter
Kevin Carpenter
In Memory of Michael D. Pugh, Jr
Mrs. Darlene S. Pugh
In Memory of Robert Clayton Pugsley, Sr
Sue and Ed Hiler

In Memory of Floyd B. Quakenbush

Mary and Art Yeakey
In Memory of Edna Mary Radecki
Mr. and Mrs. Erich W. Bruegmann
Carolyn and Jim Chrzan
Joyce and Bob Williams

In Memory of Samuel Raitzin

Andy and Duke Jones
In Memory of Mathue Joseph Rakowski
Angela Churches

In Memory of Max Edward Ramer

Northwood High School Class of '71
In Memory of Dorothy K. Randall
Virginia G. Dinkel
Bruce Erickson and Genoa Wilson
Martha and Ed Erickson
Doug Fites and Jet Fites
Mr. John J. Gaydos
Janet and Joe Gran
Jan and Terry Hartzler
Chris Kralovansky
Deana and Lee Markley
Martha and Greg Mercer

Jennifer and Doug Mulvaney
Mrs. Anita J. Nunemaker
Mrs. Janet G. Pethick
Ginger and David Ready
Carl W. Reiner
Starr Robinson
South Bend Waste Water
Mr. and Mrs. Neal F. Thomas
Sarah and Fred Voorde
Nancy and Jack Wait
Emily and John Weddle
Mr. and Mrs. James E. Williams, II

In Memory of Jefferson (Jeff) T. Rans

Mr. and Mrs. John T. Brown, Jr
In Memory of Anita Ransberger
Laura and Mark Sisti

In Memory of Everett J. Ransberger

Laura and Mark Sisti
In Memory of Margaret Ransberger
Jane and Ed Baert
Mary and Don Copper

In Memory of Deborah (Deb) L. Rapuano

Mrs. Elaine M. Bonar
Dot and Tom Corson
Gettysburg College
Dr. Brian P. Meier
Marilyn and Loren Palmer
Barbara Price
Jackie Raim
Mrs. Phyllis Shahin and Family
Bonnie and Donald Speicher

In Memory of Shirley Katherine Rawson

Mary Ann Rayl
In Memory of Edward H. Raymond
Quality Dining, Inc.

In Memory of Wallace Reber

Christopher S. Gumz
In Memory of Joseph Daniel Redling
Anonymous
Audrey Campbell
Kay Colten

Ms. Debora D. Funk
Nancy and John Gruber
Ms. Judith Gruber
Donna and Thomas Gruber
Nancy and Ken Horvath
Mary and Nick Horvath
John J. Kalil
Tricia and John Killeen
Margie and Jim Kish
Mr. and Mrs. Stan "Jerry" Klaybor
Toni Laiber
Barbara Laszlo
Alice and Harry Lewandowski
Kathleen Leweck

June and Ron Milewski
Susan and Richard Niemann
Wally Niemann
Mr. and Mrs. William W. Niemann
Judy and Richard Rajter
Dennis Stark
Clem Urbanski
Jo and John Wegh
Daniel E. Wiskotoni
Barb and Don Zimlich

In Memory of Sophia Reha

Geraldine J. Bukowski
In Memory of Jonathan Reilly
Mrs. Jenny C. Adams
Anderson Agostino & Keller
Carol Byrne

Mr. and Mrs. Tony Gunterman
Patty and Lester Hans
Jones Obenchain, LLP
The Jordanich Family
Cheryl King
Mr. and Mrs. Daniel E. Odar
Lori Risser
Janice and Timothy Woods
In Memory of Evelyn J. Reim
Mr. Stuart C. Barb
Kathy and George Freese
Joan Grassman
Mr. and Mrs. Dave Huenecke
Celia and Charlie Kirk
Scott and William Lange
Binnie and Terry Phillips and Family
Esther and Norm Redelsheimer
Sue and Steve Reim
Judy and Jim Stringfellow

In Memory of Joseph (Joe) A. Richard

Ms. Cynthia A. Bodle
Ruth P. Hess

In Memory of Donald K. Riggles

Bob Grossnickle
Ella M. Riffel

In Memory of George L. Rigley

Robert Bosch, LLC
Barbara and Dick Szoke
Mr. and Mrs. Dale D. Thornton
In Memory of Kenneth (Ken) L. Ringer
Mr. Joshua J. Stewart
In Memory of Eugenia (Jean) E. Robakowski
Bob Baranowski
Mr. Jamie L. Bortone
Dr. Jenniemarie B. Calcamuggio
Betty Ludwig

In Memory of Jim Rodewald, Sr

Jean and Rich Gronkowski

In Memory of Alice June Rogers

Linda M. Dinsmore
Midge Dinsmore
Helen M. Louk
Scott Louk
Ms. Helen J. Marsh
Kathy and Kent Perry
Rose and William Vantwoud

In Memory of James (Jim) Howard Rogers

Mr. and Mrs. Larry Maxson
In Memory of Jeri Lee Rohde
Patsy Schlemmer
Mrs. Diana L. Whitford

In Memory of Lois K. Rohrer

Loren G. Voreis
In Memory of Jean Root
Catherine Koscielski

In Memory of Eldon (Al) Charles Rossow

Mr. Len D. Buszkiewicz
Homer S. Kovacs
Shellie and Richard McGrath and Family
Connie and David Rogers
Bethany and Steve Rogers and Family
Dottie VanParis

In Memory of James (Jim) J. Rouhselang

Judy Gilman
In Memory of Robert J. Roux
Kathy and Steve Tony

In Memory of Earl Roysdon

Marilyn Roysdon
In Memory of Mae Roysdon
Marilyn Roysdon

In Memory of Richard J. Rucano

National Assoc of Letter Carriers, Branch 820
Merged

In Memory of Judith Ruelle

Mr. and Mrs. William J. Ahearn
William Ahearn
Linda and Ed Gourlay
Bette and Victor Grathwohl
Mr. and Mrs. Mark Heckendorf
Mr. and Mrs. Wayne Jonas
Mr. and Mrs. James Kandler
Carol and Bruce Krizinski
Patricia and Tom Mollison
Jan Padgett
Mr. and Mrs. Richard D. Otto and Family
In Memory of Gaylord M. Saltzgaber
Mr. and Mrs. Richard D. Otto and Family
In Memory of William (Bill) J. Salyer
Ms. Isobel Evans

In Memory of Glenn Rummel

Mr. Donald O. Maylath
In Memory of Genevieve M. Russo
Mr. and Mrs. Joseph D. Mitchell

In Memory of Evelyn M. Ruszkowski

Judy and Don Ruszkowski
Michala, Andrea and Joe Zappia
In Memory of Ronald (Ron) J. Ryback
Mrs. Barbara J. Allison
Peggy Andert
Mr. and Mrs. Robert Britton
Kathy and Pat Carr
Ilarae and Bill Caudill
Sharon and Joe Chookie
Robert E. Claffey
Mr. and Mrs. Thomas A. Curtis
Mr. and Mrs. Robert W. Davidson
Pat and Dennis Dillman
Sandee and Bob Drajer
Ron Dudeck
Donna and Thomas Gruber
Nancy and Walt Gunn
Linda Holtz
J. P. Industries, Inc.
Mr. and Mrs. Larry W. Kajzer
Doris Kingsafer
Linda Kingsafer
Margie Matzinger
Rob Matzinger
Mrs. Janice R. Miller
Rollie Williams Paint Spot, Inc.
Mrs. Barbara J. Ryback
Mr. Douglas J. Ryback
Mr. Gregory J. Ryback
Julie and David Sanders
The Edward Lowe Foundation
Tuesday Lunch Group at Miles Lab
Rea and Carrol Virt
Mr. and Mrs. Gary L. Wright
Young & Nurkowski
Tracy H. Young
In Memory of Eleanor M. Rzepka
Mr. and Mrs. Norbert L. Rzepka
Tim Rzepka
In Memory of Walter J. Sabones
Virginia Heller
In Memory of Robert L. Sager
Carol and Bob Magor
In Memory of Katherine (Kathy) Diane Sallee
Mr. and Mrs. Cecil R. Ottow, Jr
In Memory of Carol Joan Saltzgaber
Mr. and Mrs. Richard D. Otto and Family
In Memory of Gaylord M. Saltzgaber
Mr. and Mrs. Richard D. Otto and Family
In Memory of William (Bill) J. Salyer
Ms. Isobel Evans
In Memory of H. (Fern) Fern Sanborn
The D.L.D.'s

In Memory (continued)

In Memory of Ruth E. Sanders
Mr. and Mrs. Stanley E. Green

In Memory of Beverly J. Sanderson
Dan Dygert

In Memory of Florence M. Sargent
Louise and Ken Freeman
Janet and Richard Freeman
Lois and Robert Freeman
Rita and Jack Gustafson
Donna Herrmann
Elaine and Tom Laluzerne
Joyce Miller and Jerry Fulmer

E. Jean Mills
Darlene and John Raab
Carlye Reimer
Mr. and Mrs. Michael G. Schwabenlander
Marjorie and Rudy Soland
Bernice and Don Vanderloop
Ruth Vanderloop
Bonnie and Ray Witt

In Memory of Ronald (Ron) August Savoie
Carpenters Local Union #413

In Memory of Louis F. Schaefer, Jr
Ms. Pamela J. Mabry
Martha A. Schaefer

In Memory of Nored F. Schlarb
Wyatt Feed Supply, Inc.

In Memory of L. (Fred) Frederick Schleiger
Mrs. Joan Johnson

In Memory of Elizabeth H. Schlender
Sally Ballatore

In Memory of Eileen M. Schmitt
Mr. and Mrs. William G. Schmitt

In Memory of William Thomas Schmitt
Mr. and Mrs. William G. Schmitt

In Memory of David (Dave) E. Schnell
Mr. Robert D. Frick

In Memory of Kempes Yoder Schnell
Mrs. Ann P. Schnell

In Memory of Everett (Mike) D. Schooley
Ms. Janice J. Cox

In Memory of Donna Marie Schreiber
Kimberly and Gary Kopczynski

In Memory of Margaret E. Schultz
Michala, Andrea and Joe Zappia

In Memory of Max Lewellyn Schultz
Jill M. Weber

In Memory of Margaret (Peggy) Schwark
Dan Sosnoski

In Memory of Michael (Mike) L. Schwartz
Mr. Joshua J. Stewart

In Memory of George Schwenk
Mr. and Mrs. James A. Chase

In Memory of Irene A. Schymanski
Mary and Fred Bucher
Mark, Pat and Tish Chmielewski
Mr. and Mrs. Leo Kelsch
Mrs. Mary C. Lawson
Leila and Bill Lawson
Charleen McIntosh
Mr. John S. Schymanski
South Bend Medical Foundation
Helen Wolf

In Memory of Honorata M. Sciba
Sally Staszewski
Mr. and Mrs. Joseph Trimboli
Shirley Wise

In Memory of Carl A. Sechrist
Nancy Brogdon
Frances and Wayne Newport
Ms. Shirley A. Spicher
Jan and Ron VanDeVeire
Mr. Robert D. Zimmerman

In Memory of Alan B. Seifert
Mr. and Mrs. Rod Oakes
In Memory of Douglas B. Selig
Julie Harmon, Jordan Saiz from Lowe's

In Memory of Eleanor B. Seymour
Carol Hahn
Marilyn Lembke
Ms. Gail J. Wing
Alice G. Zercher

In Memory of Hershel Seymour
Ms. Gail J. Wing

In Memory of Larry D. Shafer
Leonard Snyder

In Memory of William A. Shaffer
Elsie and Howard Doughten
Janice Frederick
Ms. Barbara J. Hyink
Helen Johnson
Mary Lou and Herb Miller
Lynn and Rick Schantz
Norma Shaffer
Jerri and Don Stante
Carolyn and Arden Withers

In Memory of Ida Lee Shaffner
Joan K. Fahey

In Memory of Frances M. Shamory
Linda and Denny Beavo
Mr. Roy E. Shamory

In Memory of Nancy A. Shepherd
Vickie L. Ream
Mike Ream

In Memory of Dale J. Sherk
Mr. and Mrs. Thomas Hueni

In Memory of Kathleen E. Sherk
Mr. and Mrs. Thomas Hueni

In Memory of Arnold Rex Shutts
Mr. Ira N. Anes

In Memory of Shkeep (Skeeter) Siade
Ms. Frances E. Buysse
Mr. and Mrs. Larry Cadieux
Esther and Gordon Ecker
Mr. and Mrs. John Ehardt
Theweah and Art Hartig and Family
Mrs. Renata M. Kazmierczak

Daniel Rannells
Rannells Funeral Home, Inc.
Monieta Wadsworth
Mrs. Nancy Wieczork
Linda and Dick Williamson

In Memory of John Sienkiewicz
Mrs. Virginia M. Bowering

In Memory of Urszula Sienkiewicz
Mrs. Virginia M. Bowering

In Memory of Joseph B. Sikorski
Mr. and Mrs. Albert S. Bognar
Theresa Futa
Linda and Dennis Miller
Ms. Dorothy K. Miller
Ms. Annette Plajer
Donna and Don Schuffers

In Memory of Joseph (JB) B. Sills
Mr. David Sills

In Memory of Anthony (Tony) O. Simon
Mr. and Mrs. Bernard Doering

In Memory of Lorraine Simonson-Ferguson
Sue and Gerry Phelps
Suzanne and Lyle Stevenson

In Memory of Jacqueline (Jacquie) Ann Singleton
Veronica and Greg Singleton

In Memory of Rodney L. Sipe
Peggy Henderson

In Memory of Glenn H. Six, Jr
Barbara and Ed Cathey
Eldonna Donathen
Mr. and Mrs. Glen Hefner
Lakeville Conservation Club

Carrie M. Schwartz
Mr. and Mrs. George VanDierendonck

In Memory of Larry F. Slabaugh
Betty Anderson
Rosemary and Marquis Anderson
Anonymous
Joan Balentine

Glenda Brechtel
Cindy Brown
Marsha and Jim Caldwell
Debbie and Brian Campoli
Phyllis and Joe Catanzarite
Jody and Bob Chidister
Jenene and Jim Coleman
Darla and Michael Crabb

Lyle Crist
Linda and Terry Curtis
Dec-O-Art, Inc.
Karen and Gary Dentino
Mr. and Mrs. Joseph E. Englesberg
Jerry and Bob Fagan
Henry Fagan
Pat Fagan
Jody and Wayne Fleming
Eileen Fogarty
Mr. and Mrs. Thomas G. Foley
Pam and George Frayer
Tom Frederick
Cindy and Bill Fritz
Mr. and Mrs. James O. Ganser
Gene Goddard
Vern and Max Gretencord
Ann Gustafson
Elaine Holowatuk
Dean Hupp
Billie Jean and Kenneth Hurt
Dee and Doug Ingraham
Sharon and Cliff Johnson
Mr. and Mrs. Dean Johnson
Kathy and John Kantorowski
Carolyn and Lynn Kaser
Mr. and Mrs. Jerry B. Kendall
Tina and Dave Krege
Terry Krege
Carol and Fred Kuss
Peter M. LaCava, Jr
Tonja and Frank Lucchese
Kim and Joe Makowski
Roy Meixel
Doreen Mesecar
Larry Mitchell
Marge Mowat
Barbara Mumby
John Musary
Judie Oliva
Candis and Jerry Oswalt
Sue Parker
Joan and Max Pehlike
Pioneer Automobile Association
Mary Jean Pittman
Rhonda Powell and Dan Nusbaum
Ruth Powell
Red Hat Friends
Sally Rieff
Ms. Julia Rody

Ryan Fire Protection, Inc.
Robin and Bruce Schneider and Family
Marilou and Richard Schroeder
Gail and Mike Shirley
Mary Lee and Cy Speybroeck
Marna and Les Stebbins
Peg and Tom Summers
Jan Swanson
Connie and Terry Taylor
Deann and Joe Toth
Pat and Paul Turrell
Dorothy L. Walters
Mary Lou and Mike Watson
Anne and Richard Watson
Diane and Tom Watson
Kathleen Welsh
Vicky and Don Wigent
Mary Lou Wood
Pauline and Lane Wright
Mrs. Judith L. Zielinski
Sylvia Zimmer

In Memory of Alex Slaby
Geraldine J. Bukowski

In Memory of Norma Jean Slagle
Mr. Dan Slagle

In Memory of Richard (Dick) E. Slagle, Sr
Jan and Mike Albright
Ancon Construction Co., Inc.
Barnes & Thornburg, LLP
Linda and Mike Berzai
Sandra and Patrick Carrico
Mr. and Mrs. Gregory S. Downes
Gibson
Diana L. Hullinger
LL Geans Construction Co.
Sharon and George Lybarger
Mary McClintic
Lisa Middleton
Larry Ross and Country Garden, Inc.
The Sanctuary at St. Paul's
Karen L. Smith
Underground Pipe & Valve, Inc.
Weaver Boos Consultants
Velda and Larry Wesolowski

In Memory of Doris I. Sliter
Myrna and Frank Hudson
Carol and Max Schelbert
Jan Wagoner

In Memory of Karen A. Sloma
Lori and Mike Kerr

In Memory of Michael D. Smiechowski
Mrs. Wilma J. Smiechowski

In Memory of William (Bill) J. Smiechowski
Mrs. Wilma J. Smiechowski

In Memory of Robert E. Stauffer
Kathy and Rick Meek

In Memory of Eva J. Stayner-Thompson
Ms. Evelyn Evers
Denise and Lyle Hartranft

In Memory of Dan Smith
Mr. and Mrs. Frank E. O'Shea

In Memory of Edward (Ed) E. Smith
St. Joseph's High School

In Memory of Eldon (Sonny) L. Smith
Colleen Kubacki

In Memory of Joseph E. Smith
NAIFA of North Central Indiana

In Memory of Mary (Connie) C. Smith
Mr. and Mrs. Arthur R. Leinen, Jr
Ms. Janet C. Louderback
Mr. and Mrs. Timothy Scott

In Memory of Wilma J. Smith
Mr. and Mrs. Bruce Carter

In Memory of Carol (Joan) Snider
Karen Geisler

In Memory of Marsha L. Snyder
Mr. Ray E. Snyder

In Memory of Phyllis (Pat) V. Sommerfield
Joanne Kurapka
Ms. Carol Proffitt
John W. Toth

In Memory of Jimmie D. Sowders
Mrs. Victoria E. Sowders

In Memory of The Sparazynski Family
Mr. and Mrs. Stanley D. Sparazynski

In Memory of Henry L. Sparazynski
Nancy and Jim Krzyzewski

In Memory of Larry D. Spradlin, Sr
City of South Bend Engineering Department
Gerry Cyman
Joan and Joe Goralski
Mr. and Mrs. Paul J. Hrutkay
Sue and Don Katona
Shelby and Jerry Mittendorf
Joan and John Orisich
Janet and John Paul
Mr. and Mrs. David Qualls
Helen Retek
Mark Rzepnicki
Ann and Joe Schopmeyer
South Bend Water Works
Donna and Dennis Spradlin and Family
Mrs. Jodie L. Spradlin
Terri and Dean Tinkel
Marilyn and Richard Wilson

In Memory of Lorraine Stanke
Mr. Joseph Stanke

In Memory of Robert E. Stauffer
Kathy and Rick Meek

In Memory of Eva J. Stayner-Thompson
Ms. Evelyn Evers
Denise and Lyle Hartranft

In Memory of Lois A. Steinke
Andy and Duke Jones
Mr. and Mrs. Donald D. Nimtz
Portage Township Volunteer Fire Department,
Southwest Central Fire Territory

In Memory of Nancy A. Sterchi
Euchre Club Friends
Linda and Ken Grimes, Kristin and Courtney
Dorothy and Ray LeeVan
Donna and Tom Lockmondy
Shelley Vidmar
J. Bruce Wagner
Pat and Ernie Wawrzyniak
Betty and Don Wesolowski

In Memory of Marilyn Sue Stewart
Mr. and Mrs. Robert D. Beiter
Don and Kathy Coleman
Mr. and Mrs. Thomas J. Douglass
Brenda and Kenneth Payne

In Memory of Robert (Bob) W. Stewart
Ms. Susanne L. Burwell
Mrs. Patricia R. Stewart

In Memory of Thomas (Thom) L. Stewart
Phyllis and Bill Hamel
Neoma Kruk and Family
Gail M. Lapkiewicz
Ms. Nancy Jo Pinney

In Memory of Ralph A. Stickley
Isabel Stickley

In Memory of Dennis W. Stillson
Hattie and Bonnie Bagley
Helena and Harvey Bak
Phyllis and Jim Brown
Patricia and Larry Hollar
Betty and Dick Miller
Jan and Fred Miller
Martha Monhaut
Robinson Family Reunion
Senff Wood Products, Inc.
Joan Skwiercz and Family
Barbara and Mike Stillson

In Memory of Glenn Stine
Mr. Andrew G. Bender

In Memory of Colleen M. Stockdale
Dorothy Addison
Ms. June R. Binford
The Class of '52
Barb Coddens
Mr. and Mrs. Richard Gaddis
Sandra and Richard Lung
D. and G. McLarney
Darlene and Malcom Petry
Ms. Patricia J. Shelley
Kay and Dick Stout
Mr. David T. Stutsman
Deb Wilfert

In Memory of Hilda R. Stockdale
Mr. Gregory L. Stockdale

In Memory of Judith (Judy) Ann Stoll
Ms. Helen Ackley
Sally Ballatore
Genevieve Bueche
Jill and Butch Cole
Mr. and Mrs. John K. Frazier
Dr. and Mrs. Eldon L. Gerig
Janice and Joe Goossens
Mr. and Mrs. Stephen W. Gordon
Jean Gregorich
Mr. and Mrs. Robert B. Haas
Phyllis Hankins
Judy and Ken Holderman
Mr. and Mrs. Ted Krause
Cindy and Elmer Philhower
Mr. Charles E. Porter
Mr. and Mrs. Carlos A. Robles
Donna Fonseca
Mr. Jeffrey T. Sivak
Angela Suski and Family
The Satellite Store—Brett Miller, Pamela
Armstead
Sue and Ernie Tranberg
Ms. Nancy A. Walker
Ms. Joan Wesolowski
Alice and Pat Wesolowski
Mr. and Mrs. Kenneth Wilkin

In Memory of Elaine E. Storey
Joan Storey

In Memory of Marilyn Marie Strebinger
American Postal Workers Union Local #210
Yolanda and Richard Collins
Family and Friends of Marilyn Strebinger
Mr. and Mrs. Ronald Jesko
Pat Kelley
Linda and John Kohn
Mr. and Mrs. Michael R. Maitzen
Mr. and Mrs. John P. McCahill
Mr. and Mrs. Kenneth P. Minder
Ms. Charlene Moore
National Assoc of Letter Carriers, Branch 330
Vicki and Larry Pauwels
Janet and Darrel Schramski
Mr. and Mrs. Timothy Scott
Mrs. Daria M. Vasilescu
Ms. Shirley A. Wight
Mr. and Mrs. James T. Williams
Karen and Larry Woods

In Memory of William (Will) Bradford Streeter
Dr. and Mrs. John C. Martens

In Memory of Karen Elaine Strycker
Mrs. Eileen F. Sniadecki

In Memory of Shirley J. Stump
Active Health & Wellness Center
Centre Township Fire Department

Pat Curran
Wilma J. Curran
The Filippone Family
Portage Township Volunteer Fire Department
Southwest Central Fire Territory in South Bend,
Shift A
Southwest Central Fire Territory, Shift C
Joyce and Don Stump
Kathy Virgo

In Memory of John (Jack) E. Sule
Rose Marie Kinnaman

In Memory of Norrene R. Sullivan
Mentone Flying Club
Mossberg & Co., Inc.
Mr. and Mrs. Jess N. Neely

In Memory of John Suth
Ms. Sandra Pogue

In Memory of June L. Suth
Ms. Sandra Pogue

In Memory of Tonya Rose Swanson
Mr. and Mrs. Larry Long

In Memory of James R. Sweitzer
Mrs. Nancy L. Sweitzer

In Memory of Kathleen V. Sweitzer
Linda and Dennis Hockney

In Memory of Barbara Swift
Mr. Richard S. Swift, Sr

In Memory of Steve L Szakacs
Mrs. Elizabeth A. Szakacs

In Memory of Kazimiera Szumial
Mrs. Mary Ann Clark
Pat and Don Nemeth
Corinne Patton
Mr. and Mrs. William W. Schmidt
Ms. Brooke Szumial
Ms. Linda F. Tafelski
University of Notre Dame
Mr. and Mrs. Michael J. Zachary

In Memory of Frank (Bill) J. Szynski
Irene Szynski

In Memory of Richard (Dick) W. Tait
Dr. and Mrs. Gerald R. Broderick
Jo Dibley
Elkhart High School Class of 1949
Ms. Betty G. Kaehr
Mrs. Carol Jean Smith
Mr. John Stalter
Dee and Paul Stemm

In Memory of Beatrice (Bea) J. Tarara
Dr. Richard W. Tarara

In Memory of Marie A. Tarnow
Becky and Dean Cooper
Mrs. Florence E. Cooper
Ed Corpe
Katy and Greg Dudeck

Sarah and Don Feldman
Paula and George Heiser
Mr. and Mrs. DeVon Jesswein
James Lindsey
Mr. and Mrs. Gerald Lundquist
Martha and Dan Milliken
Ruth and Stanley Nycz
Mark Plank
Mrs. Rose M. Plank
Stacy and Shane Thompson
Jackie Veith and Bob Andrzejewski
Nicole and Michael Zirille
Cathy and Pat Zirille

In Memory of Edna Louise Taylor
Barbara Szabo

In Memory of Gloria E. Taylor
Mr. Theodore M. Alexander, Jr
Sonja and Rayford Barrier
Mrs. Ruth A. Bemiller
Karen Bishop
Marie and Richard Bruce
Ms. JoAnn Catanzarite
Jill and Butch Cole
Nancy Coleman
Shirley and Harold Crosby
Jackie and Larry Curtis
Mr. and Mrs. William Gerbeth
Elizabeth E. Goeller
Kay and George Hinderer
Mary and Dan Joslyn
Phyllis and Harold Kabay
Sharon and Joe Konopka
Cleo Kowalski
Mr. and Mrs. Ted Krause
Pam Kuespert and Vickie Reid
Ms. Harriett Leinaar
Marie and Bill Manczunski
Rose Marciniak
The Arthur Nixon Family
Mr. and Mrs. Brian Nixon
Mr. and Mrs. Gerald Nixon
James Nixon
Ms. Kathryn Nixon
Kathy and Robert Nixon
Mr. and Mrs. William Nixon
Mr. and Mrs. Frank Norris
Mr. and Mrs. Douglas W. Palmer
Jill and Tom Richards
Dianna and Harold Robbins
South Bend Madhatters
Frank Stanley
Charlotte Taylor
Francis (Jake) Taylor
Caryll Vicsik
Janice Holliday and Nancy Wibert
Kellie and Frank Wukovits
Jan and Jim Zakrzewski
Julie and Art Zielinski

In Memory (continued)

In Memory of Jerry W. Taylor
American Legion Post 27
Anonymous
Mr. and Mrs. John Myers

In Memory of Kenneth Lyle Taylor
Barbara Szabo

In Memory of Lawrence F. Taylor
Susan Taylor

In Memory of Arthur Harold Tetzlaff
Leone K. Tetzlaff

In Memory of Johnnie Lee Thompson
Mrs. Earthie L. Thompson

In Memory of James William Todd
Joan and Herb Ulery, Sr.

In Memory of Margaret (Peggy) J. Torok
Ms. Dora E. Rogers

In Memory of Michael F. Toth
Mr. and Mrs. Robert W. Fearing
Finch Lake Association, Inc.
Jean and Rich Grontkowski
Barbara Kubiak and Barry Schleiger
Donna and Tom Lockmondy
Mrs. Betty Ann Toth

In Memory of George VanDePutte
Mrs. Gladys J. VanDePutte

In Memory of Eleanor K. VanDerHagen
Debbie and Andy DeRyckere
Dottie Grochowski
Jacqueline Hankins
Kim and Jerry Kleber
Tommy Marshall
Carole Phillips
The Rohrer Family
Susan and Robert Sellenberg
Mr. and Mrs. Tom Sikorski
Dennis Stark
Paula and Jim Szekendi
Jode and Tom Szymarek
Rosan VanderHagen

In Memory of MaryAnn VanderReyden
Ms. Lori Floyd

In Memory of Eugene (Gene) F. VandeZande
Joan DeBaets
Mr. and Mrs. Lawrence R. Scherpereel

In Memory of Gerald L. Vanest
Bette Brady
Sue and Bob Walls

In Memory of George D. VanHoutdrevre
Donna Fonseca
Elizabeth Portolese

In Memory of Maurice VanLaecke, Jr
Alwilda Vance
Laura Vance

In Memory of Richard (Dick) W. VanNevel
Kathy Bakos
Mr. and Mrs. Cyril L. Cole
Joan and Jerry Gerard
Mrs. Lucille Gering

Ruth P. Hess
Kathy Higgins
Mr. and Mrs. David F. Myers
Yvonne Teeter and Sally Obren
Mr. and Mrs. David Thoman
Mrs. Theresa A. VanNevel
Ms. Mary R. VanOoteghem
Ann and Robert Wasowski

In Memory of Edwin (Ed) D. VanRyn
Mr. and Mrs. Harold A. Berger

In Memory of Randy Vanslager
Lori and Barry Vanslager

In Memory of Lynda L. Volheim-Read
Richard Read

In Memory of Gerald (Jerry) Michael Waechter
Elyse and Tom Brucks
Maureen and Chuck Bybee
Marilyn and Don Dennig
Dustin Gilbreth
Jason Gilbreth

Katrina Drudge Gilbreth
Mariette and Hal Hayden
Sharon and Cliff Johnson
Sue and Bill Kuespert
Mr. and Mrs. James A. Long
Alice Porter
Shari Pullen
Catherine Thurin

In Memory of Joan M. Wagner
Mr. Martin E. Wagner

In Memory of James Wagoner
Ms. Linda S. Wagoner

In Memory of Robert L. Walcott
Bella Terra Lawn Sprinklers
Robin Rajski

In Memory of John (Bologna John) O. Walker
Ragan, Bonnie and Joe Knowles
The Scheibal and Ogle Families
Helen and Vince Slaby
Grayce N. Walker

In Memory of John Louis Wallace
Mr. and Mrs. Brian Abbiehl
Anne and Spike Abernethy
Albert J. Brasseur Harbor Springs Financial
Mgm
Larry Avrett
Terri and Fred Binder
Jean Buzalski

Mr. and Mrs. Larry Buzalski, Sr
Sheryl Papandria
Rosemary DePastine
Mr. and Mrs. Roland Eckman
Diversified Realestate, LLC
Carolyn and Larry Gardner
Mrs. Bonnie J. Getchell
Patrice Hindsley

Mr. and Mrs. Robert P. Kamiak
Mr. and Mrs. Thomas A. Klimek
Mr. Roy E. Kohler
John H. Lloyd, III
Ms. Cynthia D. Miller
Pamela and Chip Newman
Bernie Palermo
Chad, Diana and Ron Quandt
Diana Rasmussen
John Rasmussen

Mr. and Mrs. Tony J. Ross
Mr. and Mrs. Hal Shue
Nancy and Chuck Zimmerman

In Memory of Lila (Pearlie) Jane Wallace
Bonnie and Bob DeCola

In Memory of Winifred S. Waltner
BBB's – Ladies Night Out Group

In Memory of Dennis Ray Ward
Jane and Ed Baert
Mr. and Mrs. James Furlong

In Memory of James W. Ward, III
Harvest Point Homeowners Association

In Memory of Jean I. Warner
Mr. Chester Warner, Jr

In Memory of Violet S. Warner-Jurgenson
Jayne and Tom Fogle
Mr. and Mrs. Max Haag
Candy and Don Jurgenson
Michele Landis
The Zimmerman Family

In Memory of Janette L. Warsaw
Anonymous
Pam and Mike Tajkowski

In Memory of Michael A. Was
Mr. Thomas B. Was

In Memory of Paul Stephen Watson
Jean and Rich Grontkowski
VFW Post #9820, Ladies Auxiliary

In Memory of Raymond E. Watson
Fran and Art Anderson

Jean and Rich Grontkowski
Sue and Doug Horstmann
Linda and Paul Jonas
Alicia and Carl Keefer
Dylan, Holly, Liz and Kurt Konwinski
Craig Miller
Eloise Mishler

Pauline and John Myszak
Sheryl Papandria
Melissa Surface
Mr. and Mrs. Richard T. Traver

In Memory of Virginia Anne Watt
Vivian Benjamin

Rebia and Don Caletri
Chip and Dane Egan
Mr. and Mrs. J. Joseph Egan
Gillian and Patrick Egan
Kendal and Ken Gladish
Mr. and Mrs. Russell Hart
Marilyn and Bob Judson
John M. Kuharic
Janis Owens
Mr. John H. Shafer

Mr. Charles D. Shuttles
Wanda and Gawain Stewart
Helene and Earl Talen
Ms. Laura J. Watt
Mary and Harold Weaver
Marilyn Williams

In Memory of Irene M. Wcisel
Janet and Jim Wcisel
Mary Wcisel
Brian, Karen and Tom Wcisel

In Memory of James (Jim) Eugene Weakly
Diana Graham
Rose Ann and Steve Hall
Mr. and Mrs. Ed Rock
Cathy Surface
Mr. and Mrs. Max Weakly
Janet Zimmer and Deb Swihart

In Memory of Edward H. Weaver
Mr. Carolyn J. Shelton

In Memory of Margaret J. Wegner
The Bernath Family
Linda and Dennis Hockney
Anne Jordanich
Barbara K. May

In Memory of Richard J. Wesolowski
Glenda and Donald Stanley

In Memory of John F. Westafer
Myrtle Carothers
Melba and Mack Fetters
Edna and Joe Flippo
Louise and John Gingle
Mrs. Doris I. Westafer

In Memory of Grady W. White, Sr
Karen and Ron Hobkirk

In Memory of John D. Whitmer, Sr
Mr. Paul K. Haag

In Memory of Rosalie (Rose) Wickey
James L. Wickey

In Memory of Doshie Wilkerson
Mr. Charles W. Hart

In Memory of Elizabeth (Betty) A. Willekens
Jane and Ed Baert

Mr. George E. Danneker
Elaine and Jeff Fisher
Gloria Fulmer
Sue and Jim Fuson
Gene Goddard
Elizabeth E. Goeller
Laura and Bud Haff
Deb and Ken Hannah
Tina Marie Jones
J. Paul Kendle
Charlotte and Ron Newcomer
Beth and Kenneth Whitman

In Memory of Howard W. Wilsberg
Dorothy J. Beck
NIBCO, Inc.
River Park Furniture, Friends and Co-Workers
Diane Trethewey

In Memory of Eleanor L. Wilson
Theodora A. Kolettis
Cheryl and Frank Ronchetti
Kathy and Lester Smith
Linda and Dick Williamson
Berneice and Duane Wilson
Emil Zernick
Nancy and Chuck Zimmerman

In Memory of L. D. Wilson
Mr. and Mrs. James D. Walton

In Memory of William (Bill) J. Wines
Deborah Gordon and the Chris Jones Family

In Memory of David Clarence Wireman
Mr. and Mrs. Scott Floss

In Memory of Georgene M. Wisler
Mr. Leroy D. Wisler

In Memory of Betty Rose Witcher
Marjorie Kronk and Family

In Memory of Jeffrey D. Witt
Mr. and Mrs. Timothy S. Brennan
Melanie Chamberlin
John Dorsch
Mrs. Geneva Haskell and Girls
Joe's Custom Carpentry—Liz Giannuzzi, Joe DeFauw
Cheryl Madison
Joan Williams and Family

In Memory of Mary Elizabeth Wnukowski
Becky and Curt Harrison
Sandy and Jim Machowiak
Frances Roland
Christy and David Sullivan

In Memory of Stanley L. Wojcik
Marilyn and Larry Kuskye

In Memory of Bert Wojtasik
Loretta and Eddie Radecki

In Memory of Amy L. Wood
Bernard L. McKay
Ms. Beatrice Robertson

In Memory of Thomas (Tom) Franklin Wood
Marjorie Kronk and Family

In Memory of Calvin R. Wootton
Susan A. Denman

In Memory of Ernest Don Wotasik
Loretta and Eddie Radecki

In Memory of Darlene (Dee) Wright
Jayne and John Dregits
Mary Jo and Michael Dregits
Rosemary and Ervin Nowicki

In Memory of Joseph J. Wroblewski
Mrs. Karen Wroblewski

In Memory of Charles (Chuck) L. Wynn
Mr. and Mrs. Gregory P. Howell

In Memory of Yvonne M. Yeakel
Mr. and Mrs. Robert Schmeltz and Family

In Memory of Carol
Reggie and Judd Lowenhar

In Memory of Ada J. Yoder
Mr. M. Eldon Yoder

In Memory of Grady Lee Young
Marty Young Meissner

In Memory of Jacquelyn (Jackie) Young
Jean and Rich Grontkowski
VFW Post #9820, Ladies Auxiliary

In Memory of Mary Rita Zakrowski
Helene Bernhagen

In Memory of E. Ed Zielinski
Janet Futa
Kathy and Paul Futa
Mr. and Mrs. Mike Janowiak
Mr. and Mrs. Marion Kruk
Mr. and Mrs. Jim Zielinski

Honor Listing

In Honor of Edmund C. Berger
Mr. and Mrs. Ronald E. Kaczmarek

In Honor of Terri Brandt
Janice Wagoner
Wagoner's Music Shop

In Honor of Grace M. Busse
Mr. Russell L. Busse

In Honor of Center for Hospice Staff
Ms. Laura J. Watt

In Honor of Margie L. Denning
Mr. and Mrs. Scott S. Dunham

In Celebration of the 50th Wedding Anniversary of Jackie and Jim Hoffman
Chris and Tom Keres

In Honor of Karen A. Hudson
Isabel Stickley

In Celebration of Judy Lee's Birthday
Ms. Katherine Singer

In Honor of Ruth Ann and Tom Meilstrup
Michelle and Jim Becker

In Honor of Apple Minzey and Family
The Jordanich Family

In Celebration of Donald Pinckert's Retirement after 46 Years with the South Bend Police Department
Mr. and Mrs. Eugene J. Bamber
Bamber Superette

In Honor of Eleanor R. Roush
Mr. John Abell

In Celebration of the 80th Birthday of Carmel Marie Sallows, CSC
Mary Ann and Henry Chandler
Ms. Diane Fox

In Honor of Paul D. Smith
Mrs. Kelcey Parker

In Celebration of the 65th Birthday of Mary Jane and Bill Stanley
Janet and Tom Turnock

In Honor of Jane J. Warner
Barbara Warner

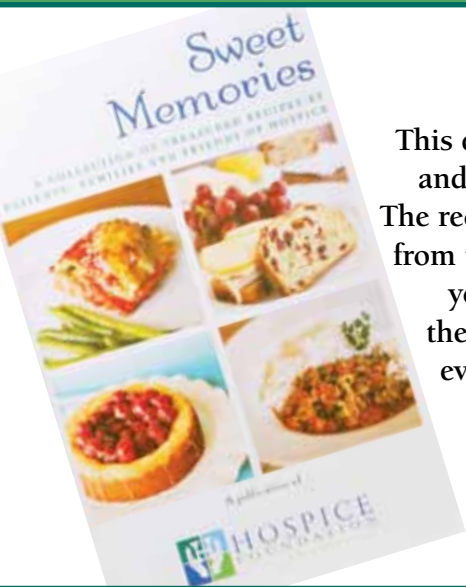
Sweet Memories

This delectable collection of recipes from patients, families and friends of hospice was truly a collaborative project. The recipes are accompanied with photos and moving stories from the families. By purchasing one of these recipe books, you help Center for Hospice Care continue to keep their promise that nobody in need of hospice care will ever be turned away, regardless of their ability to pay.

Individual Books: \$26.50

5-9 Books: \$20.00 each

10 or more: \$17.50 each





HOSPICE
FOUNDATION

SUPPORTING CENTER FOR HOSPICE CARE
4220 EDISON LAKES PARKWAY, SUITE 200
MISHAWAKA, IN 46545

Nonprofit
Organization
U.S. Postage Paid
South Bend, IN
Permit #376

Be a Part of Hospice Foundation's 2012 Annual Appeal... Join the Circle of Caring and Start a Ripple.

The impact of each dollar donated spreads through our eight-county service area. From patient medication and grief counseling to providing in-home care, your gift makes a difference in the lives of our patients and their loved ones. Perhaps most importantly, it comes at a time when caring is most needed.

