



CROSSROADS

FOR FRIENDS OF HOSPICE

WINTER 2017

CHC Veterans Memorial



A NOTE FROM WITHIN

GROWTH AND CHANGE

The end of the year is traditionally a time of reflection, an opportunity to appreciate what's occurred and a chance to plan for the coming year. The past year has been a whirlwind of activities for those of us at the Hospice Foundation. In addition to our usual events, such as the Helping Hands Award Dinner and Bike Michiana for Hospice, we hosted groundbreaking and dedication ceremonies for our new Veterans Memorial as well as added a Hero for Hospice Fun Run to our Walk for Hospice. We saw new faces at each of our events this year, which is a wonderful opportunity to make new friends. We renewed acquaintances with many of our long-term supporters, too.

Without friends, old and new, we wouldn't be able to provide the number of free or discounted services to those in need of hospice and bereavement care in the communities we serve. The generosity of our friends is humbling and greatly appreciated. When we named our giving society the "Circle of Caring" we had high hopes that it would take root and grow. And it has.

The coming year promises to bring with it a number of opportunities for the Hospice Foundation to expand its ability to provide support for Center for Hospice Care. We will be announcing some new initiatives in the coming year and hope you'll continue to be part of the circle of caring that surrounds our patients and their loved ones.



Michael J. Wargo
Chief Operating Officer



CONTENTS

WINTER 2017

p24-27 A Salute to Those Who Served

p4-5 Veteran-themed Helping Hands Award Dinner

p10 Ride, Eat, Repeat! 8th Annual Bike Michiana for Hospice Rolled on October 2nd

p12-13 Journeys In Healing

p22-23 Notre Dame-USAID Fellow Supports Palliative Care Initiative

Board of Directors

Amy Kuhar Mauro, Chair
Corey Cressy
Mary Newbold
Lori Turner
Carol Walker
Wendell Walsh

Officers

Mark Murray, President/CEO
Mike Wargo, VP/COO
Karl Holderman, VP/CFO

Contributors

Nora Crosen
Red Fisher
Caron Gleva
Denis Kidde
LollyMarie Photography
Grace Munene
Cyndy Searfoss
Chris Taelman
Mike Wargo
Jim Wiskotoni



www.FoundationForHospice.org
1-800-413-9083

©2017 The Hospice Foundation

A LOOK BACK

- p6 2016 Volunteer Recognition
- p7 Camp Evergreen Helps Youth and Teens Cope with Grief
- p8 Elkhart Gardens of Remembrance and Renewal Memorial Dedication
- p9 A Day for Heroes of All Types
- p11 5th Annual Okuyamba Fest

ON THE HORIZON

- p14-15 A Salute to Those in Our Circle of Caring
- p16 Calendar

PARTNERSHIPS IN CARING

- p18 IU School of Medicine Fellowship
- p19 Road to Hope Graduate Gives Back
- p20 African Palliative Care Conference
- p21 Helping Turn Uganda Yellow

HEART OF HOSPICE

- p28-29 Donor Profile
- p30 Planned Giving
- p31 Community Corner
- p32-33 Circle of Caring
- p34-42 In Memoriam
- p42 Honor Listing
- p43 In Honor of Those Who Served

www.FoundationForHospice.org 3

A L K BACK

STORIES AND ACTIVITIES FROM THE PAST QUARTER

Veteran-themed Helping Hands Award Dinner

Despite Mother Nature's best attempts to derail the celebration, the 32nd Annual Helping Hands Award Dinner won the night. The cocktail reception was moved indoors to accommodate the inclement weather, and the 400-plus guests stayed cozy in the pre-function area of the Hilton Garden Inn. They were serenaded by the Victory Belles, a trio of vocalists from the National World War II Museum in New Orleans who masterfully perform vintage tunes Andrews Sisters' style.

As befits an evening dedicated to veterans, the event honorees were Bob Beutter and Joe Kernan. As representatives of the many area veterans who served the US in the armed forces, Beutter and Kernan epitomize the spirit of the Helping Hands Award – service to others. Joe served

in the Navy, Bob in the Army. Joe was South Bend's mayor. Bob was mayor of Mishawaka. They served their cities through an era of change and growth and then went on to continue their service to others. Joe became Indiana's Lt. Governor and then Governor. Bob returned to his law practice where he helped his clients prepare their wills and plan their estates.

In addition, both have strong ties to two of Indiana's top institutions of higher learning. Bob received his undergraduate degree in business and his Doctor of Jurisprudence from Indiana University. Joe received his bachelor's degree in government from the University of Notre Dame where he was also a member of the baseball team.

Immediately preceding the award presentation, the Victory Belles provided a rousing tribute to the many veterans in attendance. As each branch of the armed services anthem was sung, veterans of that branch were asked to stand for recognition.

Thanks to the numerous sponsors and attendees, the year's dinner raised \$177,695 to help fund a veterans memorial on the grounds of CHC's Mishawaka Campus, which was dedicated on October 19, 2016.

A number of memorial and naming opportunities, ranging from bricks inlaid in the plaza in front of the memorial to a life-size bronze statue, "Poppies," are available to recognize veterans who served our country. For more information, see the story on page 24.

Thank you for your support!

32nd Annual Helping Hands Award Sponsors

Dinner Champion:

Art Decio

Dinner Presenters:

1st Source Bank

Carmi and Chris Murphy

The Tire Rack

University of Notre Dame

Dinner Benefactors:

Beacon Health System

Linda and Bipin Doshi

Gurley-Leep Automotive Group

The Robert J. Hiler Family Foundation

IOI Pay

LOGAN

Saint Joseph Health System

Stephanie and Todd Schurz

Strefling Foundation

WNIT

Reception Benefactors:

The Beutter Family/Children:

Donna and Brad Beutter

Michelle and Brent Beutter

Sabrina and Brian Beutter

Lori Alexander

Burkhart-Miller Family

Maura and Walter Halloran

Anna and Sam Milligan

Quality Dining

Teachers Credit Union

Dinner Patrons:

Alick's Home Medical

Barnes & Thornburg

Aaron Bradford

Mary Pat and Bob Deputy

Ann and John Firth

Dan Fitzpatrick

John Foegley

Jim Gibbons

Dianne and Michael Kelbel

Judith and Hubert Kuzmich

Theresa and Rob Meyers

Michiana Moving and Storage

Mary and Phil Newbold

Mary Pat and Dick Nussbaum

Ara Parseghian

Senior 1 Care

Kathryn Shields

South Bend Clinic

Studebaker National Museum

Ida and Perry Watson

Roberta and Ben Ziolkowski

Honor Table Sponsors:

IOI Pay

Marijo and Kevin Kelly

Mutual Bank

NIPSCO

Recycled/New Pallets

32nd Annual Helping Hands Award Dinner Committee

Honorary Chairs:

Carmi and Chris Murphy

Dinner Chairs:

Nancy and Wendell Walsh

Dinner Committee:

Linda and Bipin Doshi

Angie and Phil Faccenda

Ann and John Firth

Jody and Mike Freid

Catherine and John Hiler

Lorraine and Chris Karam

Marijo and Kevin Kelly

Nancy and Najeeb Khan

Ann Rathburn-Lacopo
and Frank Lacopo

Karen and Mike Leep

Anna and Sam Milligan

Mary and Phil Newbold

Mary Pat and Dick Nussbaum

Tonya and Tim Sexton

Barb and Reg Wagle



2016 Volunteer Recognition

Center for Hospice Care's dedicated community volunteers make a tremendous difference in the lives of the patients and families we serve. In 2015, they gave 16,355 hours of their time to CHC, traveling throughout our eight-county service area to patient homes, nursing homes and other extended care facilities, as well as our own Hospice Houses, driving a total of 43,927 miles. In addition, many of them work from one of our CHC offices assisting with administrative and other tasks as well as helping out at Hospice Foundation events. In 2015, they saved CHC \$395,313 in expenses.

To honor their work, CHC hosted the annual Volunteer Recognition and Annual Report luncheon at The Brick in South Bend. As is tradition, one of the highlights of the lunch is the presentation of the John E. Krueger Hospice Caring Award. This award is given annually to the volunteer who

exemplifies his/her commitment to CHC and its mission. The 2016 recipient was Dale Kern, an 11-year CHC veteran who has also served Elkhart-area Hospice patients since the late 1980s. We are pleased to honor Dale for his dedication to a life of service to others. If not serving CHC as a home visit or "We Honor Veterans" volunteer, he is helping care for a friend or neighbor, and/or their pets as well as driving friends to and from medical appointments.

Jessica McCourt, Home Health Aide said, "Dale's spirit is humble. His soul is golden. He is reliable, soothing, sweet, contrite, kind and brings comfort to our patients and their caregivers. He is patient and shows respect to all." Marlane Huber, Elkhart Volunteer Coordinator, summarized, "Dale truly embodies all the character qualities one could hope for in a volunteer. He is an inspiration to me and others and I admire him greatly."



Other CHC volunteers receiving special recognition for their years of dedicated service included:

5 Years

Bruce Foster (Camp Evergreen)
Sr. Julia Huelskamp
Matthew Nichols (Camp Evergreen)
Alyssa Peterson (Camp Evergreen)
Virginia Russell
Norma Wamsley

10 Years

Barbara Adcock
Noreen Buczek
Joyce Metzler-Smith
Anila Mondabaugh
Marlene Ogorek
Miriam Orendorf
Mary Reber
Blanche Sailor
Julie Shamo

Chrystal Snow-Schmatz
Elizabeth Stauffer
Lee Stone

15 Years

John Belke (Camp Evergreen)
Larry Brucker
Kristine Kalber (Camp Evergreen)
Len Kalber (Camp Evergreen)
Pamela Gambrel Ketcham
Michael Kyser
Carole Moats
Loanna Rockstroh

20 Years

Martha Jones
Dee Tepe

25 Years

Joyce Frederick

Camp Evergreen Helps Youth and Teens Cope with Grief

For 23 years, Camp Evergreen has given grieving children and teens a supportive, yet fun, environment in which to learn. The camp is provided at no charge, thanks in part to many generous donors throughout the community. This year 55 campers took part, including 22 teen and 33 youth campers.

The Hospice Foundation would like to thank the estate of John H. Lloyd III for its recent gift to establish an endowment for Camp Evergreen. Thanks to the generosity of this gift, CHC's unique camp will enjoy a permanent stream of ongoing financial support.

The youth camp (ages 6-12) took place on Saturday, June 4. The teen camp (ages 13-17) began Friday, June 3 and concluded on Sunday, June 5. For younger campers, it was a day of

swimming, horseback riding, fishing, campfires and making memory boxes in recognition of their loved one. Older campers took part in a challenge course, swimming, campfires and other fun activities.

Camp Evergreen is held at Bair Lake Bible Camp in Jones, Michigan. Free transportation to and from camp is provided for both weekend and day campers from local, designated pickup sites. The camp is nonsectarian and welcomes participants regardless of race or religion. The teens and volunteers stay overnight in a secure and comfortable lodge and a registered nurse is on hand at all times.

This camp experience is also made possible through the dedication and assistance of the volunteers who donate

their time. Adult buddies for each youth camper and for small groups of teen campers provide support throughout camp. Additional adult volunteers assist with camp activities. All new volunteers attend one 3-hour training session.

The 2017 edition of Camp Evergreen is scheduled to take place in June 2017. For more information, contact Nancy Patterson at PattersonN@cfhcare.org or 574.255.1064.

Left: The lights ceremony for the teen campers is always a very touching event. Each camper lights a candle and floats it across the lake in memory of their loved one.

Center: Each year, campers plant an evergreen and place a note on the tree in memory of their loved ones.

Right: Campers work on a craft project to hold memories of their loved one in following their experience at Camp Evergreen.



A LOOK BACK

Elkhart Gardens of Remembrance and Renewal Memorial Dedication

More than 50 people took part in the June 7th dedication ceremony in the Gardens of Remembrance and Renewal at Center for Hospice Care's Elkhart Campus. On this lovely early summer evening, those gathered paid tribute to loved ones who were memorialized with the donation of an engraved brick, bench, flowering or evergreen tree. The dedication ceremony, which takes place the first Tuesday in June each year, enables families to reflect on the lives of their loved ones and to see how the donated items add to the campus' beauty.

Guests were welcomed by Center for Hospice Care/Hospice Foundation President and CEO Mark Murray and Hospice Foundation Vice President and COO Mike Wargo. Bereavement counselor Greg Suderman led those

in attendance in a responsive reading to end the emotional ceremony. Light refreshments were served as guests visited in the garden.

The peaceful setting just outside Hospice House provides a place for patients and families to visit or simply take in the beauty of the campus. The donation of these items helps assure that those who may be eligible for hospice care in the future, but without the means to pay for it, will receive the compassionate care they need.

If you are interested in purchasing a memorial item for placement in 2017, you can do so online at donations.cfhcare.org/elkhartgiving or contact us by email at memorial@cfhcare.org.



A Day for Heroes of All Types

What does every hero have in common? Helping a great cause! Now in its 36th year of caring for patients, Center for Hospice Care (CHC) has seen some phenomenal heroes, in all shapes and sizes, of all ages. Our heroes include family members, patient care staff and the patients themselves, all of whom improve the quality of living.

To honor these everyday heroes, the Hospice Foundation added a new event to the annual Walk for Hospice – the Heroes for Hospice Fun 5K. On July 3, 2016, more than 40 caped crusaders and other costumed heroes descended on Central Park, adjacent to CHC's Mishawaka Campus, to take part in the inaugural event. Following the Fun 5K, bagpiper Leonard Sailor led walkers across the pedestrian bridge to begin the Walk for Hospice. The younger set received a "Heroes for Hospice" cape, compliments of Sassy's Sandwich Shack. In total, more than 320 people enjoyed the event, which raised \$21,805 for Center for Hospice Care.

Elkhart's own Hall of Heroes Museum added to the fun by exhibiting several of its treasures including the shield used by Chris Evans in *Captain America* as well as the '65 Iron Man Shelby Cobra from the first Ironman movie. Our thanks also go to the US Army for providing games as well as Paul Chamberlin of "Music Machine" for spinning some great tunes and providing a photo booth.

Heroes for Hospice Sponsors:

Walk Presenter:

DJ Construction

Walk Benefactor:

Recycled/New Pallets

Cape Sponsor:

Sassy's Sandwich Shack

Walk Patron:

Saint Joseph Health System

Memorial Celebration:

Big C Lumber

Memory Wall Presenter:

Old National Bank

Finish Line Celebration:

Senior 1 Care

Welch Packaging Group

Stage & Entertainment:

Veldmans Auto Parts, Inc.

Water & Snack Stop Donations:

TK Steel, Inc.



A LOOK BACK

Ride, Eat, Repeat! 8th Annual Bike Michiana for Hospice Rolled on October 2nd

It took more than 250 dedicated volunteers, a truckload of delicious food, hundreds of miles of pavement, seven outstanding local restaurants and a number of generous sponsors to once again make Bike Michiana for Hospice “The Midwest’s Premier Cycling Event.” In anticipation of the nearly 1,000 cyclists who participated this year, co-sponsors Bike Michiana Coalition and the Hospice Foundation worked feverishly to arrange another great time to “Ride, Eat, Repeat!”

This year’s event featured a new 82-mile “Foodie Route” that included our most popular SAG stops. Other routes ranged from the challenging 100-mile ride, which went to Weko Beach and back, to a family-

friendly 3.5 mile ride. The post-ride party started at 11 am at St. Patrick’s Park, which was the starting and ending point for each route.

Registration proceeds benefited two local non-profit organizations that improve the quality of living in our community – Center for Hospice Care and the Bike Michiana Coalition. In addition, cyclists raised money for the Hospice Foundation by asking family and friends to pledge their support.

Early registration is open for the 2017 event, which will take place on September 17, 2017. Early registration for adults is just \$40. Visit www.bikemichianaforhospice.org/ registration.



5th Annual Okuyamba Fest

It’s a word that causes people to pause for a moment and ask, “what did you say?” Okuyamba means “to help” in Lugandan and Center for Hospice Care (CHC) and the Hospice Foundation have used it for both a movie and a celebration of our Ugandan partnership with the Palliative Care Association of Uganda (PCAU).

This year Okuyamba Fest was held on October 12th on CHC’s Mishawaka Campus. More than 50 attendees enjoyed international food and beer as well as a silent auction of Uganda hand-crafted artwork. The event also featured screenings of the *Okuyamba* and *Road to Hope* documentaries.

Funds raised by this year’s event were designated for the Road to Hope fund. This fund was established to provide support for orphaned child caregivers in Uganda

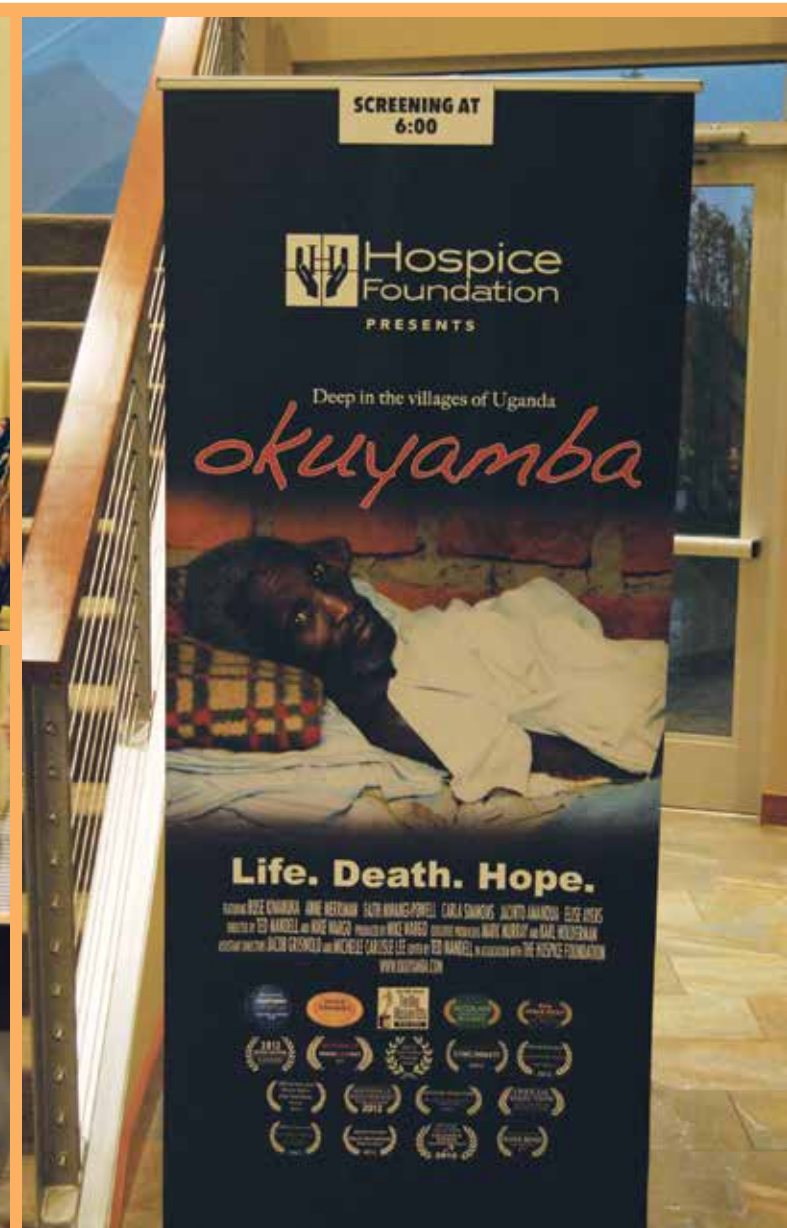
(see the story on page 19 for more information about the Road to Hope). Okuyamba Fest raised \$3,601 to support this fund. More information about the *Road to Hope* documentary can be found at www.RoadToHopeFilm.org.

Clockwise from top left:
Okuyamba Fest attendees browse the silent auction items and place their bids.

Attendees had the opportunity to participate in screenings of both Hospice Foundation documentaries, *Okuyamba* and *Road to Hope*.

Attendees mingle while enjoying appetizers and refreshments.

A display of unsponsored children on the Road to Hope program was set up at the event.



ON THE HORIZON

FUTURE EVENTS AND HOSPICE HAPPENINGS

Journeys in Healing

For some people, expressing their grief through art provides a path to healing. Providing education and support to those who are grieving due to the death of someone in their lives is the mission of Center for Hospice Care's Life Transition Center; the *After Images* art counseling program offers participants a unique approach.

On June 14, 2017 the Hospice Foundation and Center for Hospice Care's Life Transition Center will host their first exhibition of pieces produced in the *After Images* program, called "Journeys in Healing." Twelve pieces of art produced by participants in the program will be part of a silent auction. In addition, bundled note cards of each piece will be available for purchase. Proceeds from the event will be added to an endowment which has been established for the *After Images* program.

After Images is led by Dave Labrum, who has an MFA from the University of Michigan and a master's in counseling from Indiana University. He will offer tours of the art studio during the event. In addition, two of the program's clients will have a small exhibition of their work and will be available to talk about their pieces and their journeys.

The evening will begin with a cocktail reception at 6 pm. Guests are encouraged to RSVP by contacting Hospice Foundation Special Events Coordinator, Robert "Red" Fisher at FisherR@cfhcare.org or by phone at 574.243.3119.

Top Right: The *After Images* art studio walls are filled with the work of program participants.

Middle Right: Dave Labrum works in the *After Images* studios between clients.

Bottom Right: Participants in the *After Images* art counseling program have a variety of mediums to choose from.

Below: Program participant Felicia Johnson O'Brien chooses pieces to include in a display of artwork that she created during her journey in healing.

Opposite Page: Pieces of art that will be available for auction at the event.



ON THE HORIZON

FUTURE EVENTS AND HOSPICE HAPPENINGS

A Salute to Those in Our Circle of Caring

The annual Circle of Caring Lunch has been one of the ways the Hospice Foundation (HF) has thanked Center for Hospice Care (CHC) donors for their support. In 2017, the event will be bigger and better than ever. Instead of lunch, those who have donated \$1,000 or more during the past year will be invited to dinner and to be part of the unveiling of our Helping Hands Award Wall of Fame.

The new Wall of Fame features photographs of all the individuals and families who have received the Helping Hands Award at our annual May dinner as well as information about the award and the current recipient.

There will be a short program to give a brief update on CHC/HF activities in 2016 as well as a number of new initiatives. The evening will begin with a cocktail reception at 6 pm. Invitations to the event will be mailed in February.

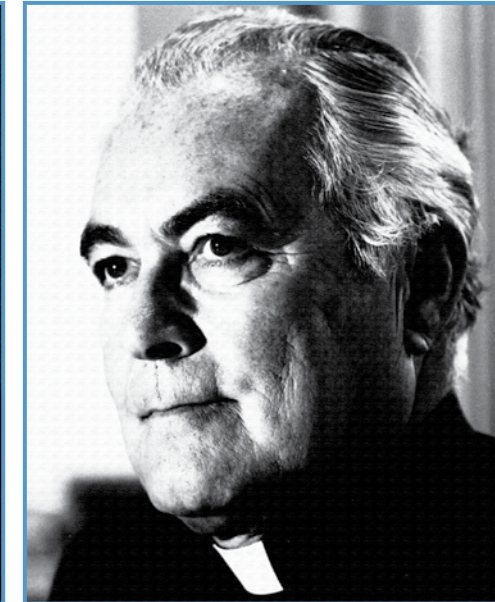
Top: The Hilton Garden Inn's Gillespie Center was full for the 2012 Helping Hands Award Dinner honoring Mary Ferlic.

Bottom: Some of Center for Hospice Care's Circle of Caring members gather for the 2014 Circle of Caring Luncheon. This year's event will be a dinner in March and will be held in conjunction with the unveiling of the Helping Hands Award Wall of Fame.

Opposite Page: Photos of just a few of CHC's past Helping Hands Award recipients.



Elmer and Gerald Kamm



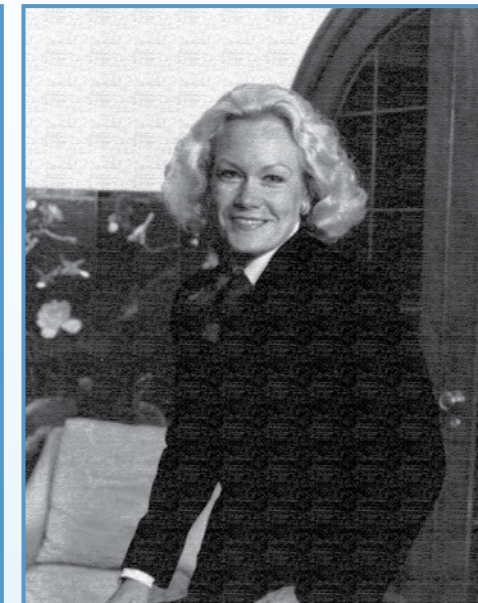
Father Theodore Hesburgh



Barbara K. Warner



Judd and Mary Lou Leighton



Mary Ferlic



Burkhart/Miller Family

ON THE HORIZON

FUTURE EVENTS AND HOSPICE HAPPENINGS

Hospice Foundation Calendar of Events

We look forward to your participation in and support of these important events. Please check our web site, www.foundationforhospice.org, for more information and event dates throughout the year.

March 2017

- **March 16**
Helping Hands Award
Wall of Fame Dedication
- **March 16**
Circle of Caring Dinner

May 2017

- **May 3**
33rd Annual Helping Hands
Award Dinner

June 2017

- **June 6**
Elkhart Gardens of Remembrance
and Renewal Memorial Item
Dedication
- **June 14**
After Images Journeys in Healing
Art Auction

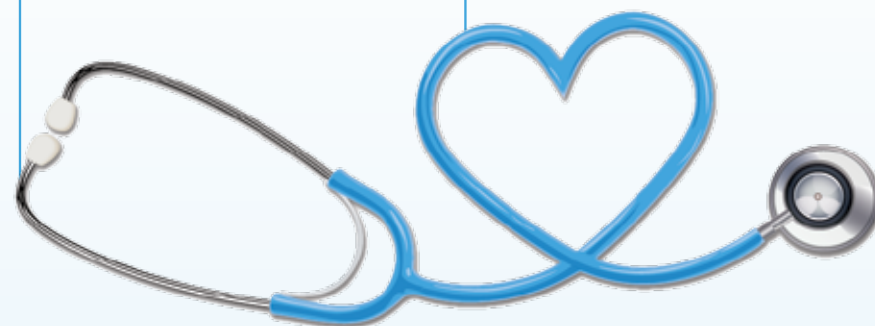
August 2017

- **August 13**
Heroes for Hospice Fun 5K
& Walk
www.walkmichianaforhospice.org

September 2017

- **September 17**
Bike Michiana for Hospice
www.bikemichianaforhospice.org

Find us on:



2 Organizations 1 Mission

Improving the Quality of Living

Through its support of Center for Hospice Care, Hospice Foundation helps patients and their loved ones experience the best possible quality of living regardless of healthcare insurance or an ability to pay.

- Hospice
- Home Health
- Grief Counseling
- Community Education

Caring for patients in Elkhart, Fulton, Kosciusko, LaGrange, LaPorte, Marshall, St. Joseph and Starke Counties in northern Indiana.

 Center for
Hospice Care
choices to make the most of life™

 Hospice
Foundation



To learn more or self-refer, call anytime. 1-800-HOSPICE or CFHCare.org

IU School of Medicine Fellow Completes Rotation at Center for Hospice Care

In 2005, the Indiana University School of Medicine (IUSM) established its Fellowship in Hospice and Palliative Medicine (HPM). The one-year clinical fellowship is dedicated to developing leaders in the HPM field.

In 2015, IU and Center for Hospice Care (CHC) entered into an agreement in which CHC became a clinical site for the program's HPM Fellows. Physician-students in this program spend four weeks working alongside CHC's medical directors and nurse practitioners to learn the techniques of providing care for hospice and palliative care patients and their families. To date, four IU Fellows have elected the CHC rotation.



Most recently, Dr. Nuria Elena Rosa Mercadal came to CHC to work with our three full-time medical directors who serve as Associate Clinical Instructors with IUSM. During her four-week rotation, Dr. Mercadal

provided care to patients in a number of settings, including seeing patients in their homes and in our Hospice Houses.

Dr. Mercadal is a 2013 graduate of the Indiana University School of Medicine and completed an Internal Medicine residency at IUSM in June 2016. During her residency, she coordinated care of high-risk patients as an outpatient primary care physician, in 130+ continuity clinic. In addition, Dr. Mercadal conducted research regarding the empathy communication skills of resident physicians, and completed grand round lecture and a milestone quality improvement project.

Beyond providing experiential learning opportunities for Medical Fellows, CHC continues its past practice of providing clinical experiences to Family Medicine Residents from programs at Memorial Hospital and Saint Joseph Health System Mishawaka Medical Center. In the past year alone, ten Saint Joseph residents, two Memorial Hospital, two IUSM fellows, one IUSM fourth-year student, and one IUSM third-year student have rotated through CHC. In addition, CHC serves as a 6-week clinical rotation site for HPM Fellows from Mayo Clinic.

During her rotation with Center for Hospice Care, Dr. Mercadal (back to camera, right) was able to take time away from her busy clinical schedule to attend Hospice Foundation's 5th Annual Okuyamba Fest.

Road to Hope Graduate Gives Back

Students who are part of the Road to Hope program are a special group – not only because they cared for a dying parent or parents but because of their resilience and dedication to their schooling. Stephen Kasula, a recent Road to Hope graduate, is the epitome of these characteristics.

Stephen became part of the program in November, 2012 to complete his education as a Clinical Officer. He was older than the typical student in the program but was recommended because he had financed his high school education by making and selling

bricks while caring for his dying mother. He provided her care when not in school and arranged for others to help while he was in class.

After graduation Stephen worked in a clinic. Then in September, 2016 he began working at Hospice Jinja as part of its palliative care team. He said, "I am thankful for the teamwork and love at Hospice Jinja. We shall fulfill our goals through working together."

This location puts him near Holy Cross Lakeview School where two current Road to Hope students attend and he visits them

regularly. He has also been part of the Road to Hope Children's Camp that the Palliative Care Association of Uganda (PCAU) holds each May, which is modeled after Center for Hospice Care's Camp Evergreen.

As CHC/PCAU volunteer Roberta Spencer noted, "Stephen really is an inspiration. He continues to follow up with other Road to Hope children, even with his busy schedule, and is a great role model!"



Left: Following graduation, Stephen began working for Hospice Jinja as part of their palliative care team. He attended the 2016 Road to Hope Camp and spoke to and mentored other children in the program.

Center: Stephen collects morphine from a PCAU worker that he will then give to his dying mother.

Above: Stephen's mother that he cared for until her death.

Value of Partnerships Highlighted at African Palliative Care Conference

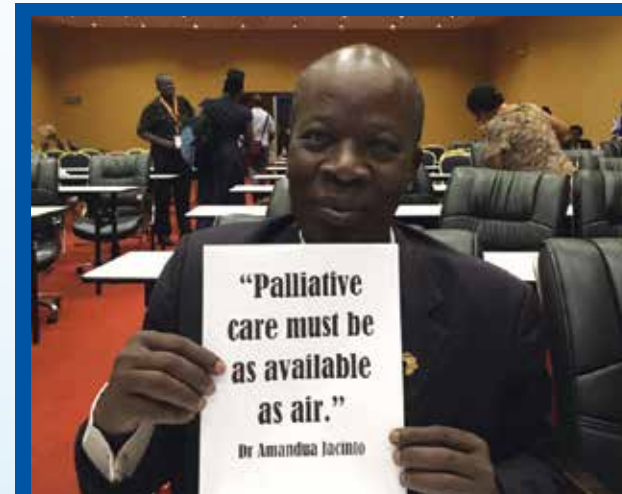
The 5th International African Palliative Care Conference was held in Kampala, Uganda August 16-19, 2016. This conference, hosted by the African Palliative Care Association and the Worldwide Hospice Palliative Care Alliance, brought together providers and stakeholders from 35 countries to share their knowledge about delivering palliative care in developing countries. The theme of this year's conference was "Hospice and Palliative Care: Resolution to Action," which reflected the groups' commitment to moving forward on the 2014 World Health Assembly Resolution on palliative care.

Hospice Foundation (HF) Chief Operating Officer Mike Wargo and Rose Kiwanuka, Country Director of the Palliative Care Association of Uganda (PCAU) conducted a workshop entitled "The Value of African/USA Partnership Programs." The focus of the workshop was on defining what is meant by "partnerships," highlighting the roles and responsibilities of partners, sharing experiences, describing the benefits and challenges of partnerships

and identifying ways to encourage and strengthen partnerships between US and African programs.

"Uganda has become the model for the delivery of palliative care in developing countries. It's always an honor to be invited to speak to practitioners and leaders from other nations about the many success stories our partnership has shared," commented Wargo.

PCAU will host its own bi-annual international conference on palliative care in Kampala in August 2017.



Helping Turn Uganda Yellow

One of the major objectives of Center for Hospice Care's (CHC) partnership with the Palliative Care Association of Uganda (PCAU) has been to make palliative care accessible throughout the entire country. With the support of CHC/HF and others, PCAU's goal is to "Turn Uganda Yellow," indicating that palliative care services are available through a specially trained health care worker able to prescribe morphine somewhere in each district.

PCAU has successfully supported the roll out of palliative care services in 93 of Uganda's

112 districts, up from just 34 districts when the partnership began in 2008. However, there is still a great, unmet need to provide skilled, compassionate care to dying patients and their families. The Ugandan government estimates that only 10% of the population in need of palliative care is actually able to access the services.

CHC/HF has helped support this initiative through its sponsorship of scholarships in Hospice Africa Uganda's Diploma in Clinical Palliative Care program. This course allows clinical officers and nurses to receive the

training necessary to become palliative care practitioners legally authorized to prescribe morphine. The one-year program combines theoretical course work with intense field training. Those who complete the course then return to their communities to provide these services.

Eight new students entered the program in August, 2016, which brings the total of students sponsored by CHC/HF to 42.

Pictured below are two classes of Clinical Palliative Care program students.



Notre Dame-USAID Fellow Supports Palliative Care Initiative

Uganda, like other countries in Africa, is striving to increase availability and accessibility of hospice and palliative care services. This is done using various delivery methods that include home-based care, day care, and inpatient care. Through its partnership with the Palliative Care Association of Uganda and collaborative partnerships at the University of Notre Dame, Center for Hospice Care (CHC) and the Hospice Foundation (HF) are supporting these efforts.

The PCAU/CHC/HF alliance was facilitated through Global Partners in Care, an organization that supports the development of partnerships between hospices in the United States and other parts of the world. The collaboration between PCAU and CHC has resulted in the training of healthcare professionals in hospice and palliative care, production of various advocacy materials, and opportunities for college students from the United States to learn by working alongside healthcare professionals in Uganda.

At the University of Notre Dame, CHC works with the Eck Institute for Global Health (EIGH) and the Notre Dame Initiative for Global Development (NDIGD) to better understand the current state of palliative care in Uganda. The goal of this collaborative effort is to identify gaps in service and opportunities for strengthening palliative care services.

In a country with spotty Internet coverage, the challenge is collecting accurate data. CHC and EIGH are collaborating with PCAU to

support the collection of timely, accurate data on palliative care throughout the country by using mobile phones, also known as mHealth. This palliative care surveillance system is currently being piloted in 10 facilities across Uganda. Once the project is successfully implemented and scaled up throughout the country, this national database on palliative care services in Uganda will be accessible by service providers and other policy makers in the country, which will facilitate decision making and advocacy for palliative care.

Led by Lacey Ahern, an EIGH faculty member, the University of Notre Dame team includes support from the Office of Information Technology and The Center for Social Research.

This collaborative initiative is entering its third year. The first global health student to work on the project was Brianna Wanless, who put the program platform in place by identifying the technology packages and data to be collected, then implementing the pilot program.

In 2016, in collaboration with NDIGD, EIGH secured matching funding from USAID to support the research and travel of one of EIGH's master of science in global health students, Katie Anderson, in Uganda. This funding was a part of the USAID | Notre Dame Global Development Fellowships that support graduate students across the United States to work with professionals in developing countries where USAID works.

Katie was hosted by PCAU in Uganda and together they worked with various local stakeholders including the Uganda Ministry of Health and Uganda Martyrs University (UMU) on the mHealth project. Katie was involved in training healthcare professionals to collect and transmit data using cell phones, testing the devices, and evaluating the quality of the data.

In the coming year, the partners will continue to scale up their efforts to evaluate the long-term sustainability of this mHealth project.

Our thanks go to Grace Munene, Notre Dame Initiative for Global Development, for this article.



A Salute to Those Who Served

He sits quietly and somberly, with the tranquil St. Joseph River as a backdrop. His heavy dress overcoat spreads behind him as he clutches a small bunch of poppies in his hand. “Poppies,” the bronze statue created by Florida-based artist W. Stanley Proctor, is the centerpiece of Center for Hospice Care’s new Veterans Memorial. It is also a poignant reminder of the thousands of local veterans who served our country in the armed forces – and who face unique issues at the end of life.

Center for Hospice Care (CHC) is proud to be a Level 4 “We Honor Veterans” partner, the highest designation an organization can receive. A collaborative effort between the Department of Veterans Affairs and the National Hospice and Palliative Care Organization, this unique program provides focused end-of-life care for those who served in the armed forces. As a Level 4 partner, CHC integrates veteran-specific content



The St. Joseph River serves as the perfect backdrop for the Veterans Memorial constructed on Center for Hospice Care’s Mishawaka Campus.

into its staff and volunteer orientation and education.

CHC is committed to providing compassionate care to veterans facing serious, life-limiting illness. As CHC President/CEO, Mark Murray notes, “one out of four dying Americans today is a veteran. Our

goal is to address their end-of-life needs, to serve them as they have served us.”

Ground was broken for the memorial in June; it was dedicated on October 19th at a ceremony attended by more than 200 guests, which included a number of local veterans who served

in World War II. The ceremony began with an opportunity for guests to visit the memorial and watch as a Blackhawk helicopter delivered Indiana Adjutant General Maj. Gen. Courtney P. Carr, who represented the armed forces and made remarks from his perspective as Indiana’s senior military officer. Kevin Kelsheimer, St. Joseph County Veterans’ Service Officer spoke on behalf of the veteran community. US Senator Joe Donnelly, who serves on the Senate Armed Services Committee, was on hand to deliver the keynote address.

Chaplain Candidate 2nd Lt. Byron Durant, of the US Army, delivered the invocation and Mark Moore, a Marine Corps Veteran and Pastor of River Valley Church gave the benediction.

Murray served as master of ceremonies for the event and Mike Wargo, a US Air Force veteran and Chief Operating Officer of the Hospice Foundation, provided some background on the development of the memorial.



Other members of the platform party included Mishawaka Mayor Dave Wood; memorial designer Chris Chockley, Jones Petrie Rafinski; Nick Nicholoff, Department Northern Vice Commander, American Legion.

The festivities included musical performances by the US Navy Band and the Victory Belles from the National WWII Museum in New Orleans. A cocktail reception and dinner for those who donated to the memorial followed.

Center for Hospice Care offers a number of opportunities to honor those who served in the United States Armed Forces at the Veterans Memorial, including engraved bricks, brass wall plaques, limestone benches and flagpoles representing each branch of the armed services. To learn more about memorial items available for dedication, visit donations.cfhcare.org/VeteransMemorial or email memorial@cfhcare.org.

Construction Progress





HEART OF HOSPICE

HOSPICE INVESTMENT AND DONATION INFORMATION

Donor Profile: Chad Gradowski

Some people's passion for living is apparent from the first meeting. Chad Gradowski, who currently holds the honor of being Bike Michiana for Hospice's leading fundraiser, is one of those people. While Chad describes himself as, "one of those guys who can talk, talk, talk," others are likely to use descriptions such as friendly, outgoing and fun, while admitting that Chad is never at a loss for words.

Those are all qualities that have helped him raise money to support the work of Center for Hospice Care. "I cannot say enough about the idea of hospice," he said. "It allows people to leave this Earth in comfort and dignity. It's a great cause to support, the whole idea of the circle of life."

His appreciation of hospice has grown over the years as friends and family members of friends have received hospice care at the end of life. "This was a tough year for me, in terms of having

my dad in hospice in Illinois and trying to raise money for this year's event," Chad said. "I want to get at least \$5,000 each year."

Although he hasn't yet hit that amount, what Chad has raised in the last four years is impressive, totalling almost \$10,300. His total for just the past two years alone is \$7,725.

Bike Michiana for Hospice gives Chad the opportunity to raise funds for a cause he believes in while pursuing a sport he's come to love. He calls the event "a gourmet bike tour." He noted, "I haven't ridden in events all around the nation but in this area, most would agree, that there's not another one like Bike Michiana for Hospice. I can easily say that of all the rides I've been to in the Midwest, this – by far – has the best SAG stops, between the food, entertainment and the great group of people who are involved in it. It just gives you a great feeling to be part of it."



Planned Giving

As part of Center for Hospice Care (CHC) and Hospice Foundation’s (HF) ongoing efforts to encourage and promote planned giving – a way for generous people to support non-profits and charities through an estate plan or bequest – this issue of *Crossroads* features some specific language for those interested in supporting CHC and HF through this giving option.

To begin, a charitable bequest is written in a will or a trust and directs a gift to be made to a qualified tax-exempt charity like the Hospice Foundation. The foundation is commonly referenced in official documents as The Foundation for the Center for Hospice and Palliative Care Inc., which reflects our legal name.

One benefit of a charitable bequest is that it enables a donor to support the Hospice Foundation in perpetuity. Based upon the goals of your estate plan, charitable bequests can reduce estate taxes by providing your estate with a charitable deduction for the value of the gift. Survivors’ income taxes on assets received from an estate may be minimized based upon the inclusion of a charitable bequest as a component of the estate plan.*

Sample Charitable Bequest Language

General Bequest: “I give, devise and bequeath to The Foundation for the Center for Hospice and Palliative Care Inc., the sum of \$_____

(or a description of the specific asset or percentage of estate), for its general purposes.”

Specific Bequest: “I give, devise and bequeath to The Foundation for the Center for Hospice and Palliative Care Inc., the sum of \$_____ (or a description of the specific asset or percentage of estate), to be added to a permanent endowment fund held by The Foundation for the Center for Hospice and Palliative Care Inc. for the benefit of (name of the specific endowment area). If at any time in the sole judgment of the Board of Directors of The Foundation for the Center for Hospice and Palliative Care Inc., it is or becomes impossible or impracticable to carry out the designated purpose of this gift, then the Board of Directors of The Foundation for the Center for Hospice and Palliative Care Inc. shall determine an alternative purpose closest to the original designated purpose.”

Residuary Bequest: “All the rest, residue, and remainder of my estate, both real and personal, I give, devise and bequeath to The Foundation for the Center for Hospice and Palliative Care Inc. to be used to carry out its corporate objectives and purposes.”

Contingency Bequest: “If all of the above named beneficiaries should predecease me, I devise and bequeath my

residuary estate to The Foundation for the Center for Hospice and Palliative Care Inc. to be used to carry out its corporate objectives and purposes.”

Planned giving benefits CHC and HF each day. In 2015, planned gifts and bequests totaled almost \$250,000. As we move forward in determining ways to serve increasing demand for our services, gifts like this enable us to continue to meet our commitment to care for anyone in our eight-county northern Indiana service area who is eligible for hospice care – regardless of their ability to pay.

To determine your needs and how best to make a planned gift, we welcome the opportunity to meet with you and your attorney or financial advisor to discuss options available to you.

Hospice Foundation (a dba for The Foundation for the Center for Hospice and Palliative Care, Inc.) is a 501(c)(3) organization headquartered at 111 Sunnybrook Ct., South Bend, IN 46637. To learn more about planned gifts, contact Chris Taelman at 574.243.3713 or taelmanc@cfhcare.org.

** Information contained herein does not constitute legal advice. Readers are advised to consult with their own legal counsel and financial advisor to determine the best course of action for their personal circumstances.*

Community Corner

The Hospice Foundation is grateful for the generosity of the many groups that support its mission through their independent fundraising efforts, grantsmanship and donations. Although we cannot recognize every effort, we are pleased to take this opportunity to recognize the following and thank all those in the community who support our agency.

Plymouth Elks Lodge #2548 trustees, officers and members donated \$200 to Center for Hospice Care to help those patients needing financial assistance.

Inwood United Methodist Church donated \$200 to Center for Hospice Care.

Kappa Kappa Kappa Inc. Epsilon Lambda Chapter of South Bend gave \$500 for our Camp Evergreen program for memory boxes and drawstring bags received by each camper.

Jamestown United Methodist Church of Elkhart held a “loose coin” offering where \$71.25 was raised and donated to our organization to further our work in the community with youth at Camp Evergreen.

Kappa Kappa Kappa Inc Beta Gamma Chapter of Mishawaka gave \$225 to sponsor a campership at Camp Evergreen.

The South Bend Post Office Credit Union members donated \$60, raised as part of a loan promotion, to Center for Hospice Care.

Ahepa Chapter #100 Charties Inc. donated \$500 to assist Center for Hospice Care in our mission.

Precious Metal Refining Services Inc. donated \$114.30 to Center for Hospice Care as a result of their collaboration with Palmer Funeral Home Cremation Recycling Program.

Radiology Inc. allowed employees to wear blue jeans for a local charity, Center for Hospice Care was chosen to receive \$300 to help those we serve.

South Bend Sod Busters

Each Memorial Day, the South Bend Sod Busters hold a mud bog. Since 2005, they have donated a part of the proceeds to Center for Hospice Care. This year’s event raised \$6,000 for CHC. In total, the South Bend Sod Busters have donated over \$72,000 to help CHC keep their promise that no one eligible for hospice care will ever be turned away, regardless of their ability to pay.



South Bend Sod Busters’ Dave Titus presents Hospice Foundation Special Events Coordinator Red Fisher with the ceremonial \$6,000 check following the Memorial Day mud bog event.

Due to Internal Revenue Service tax regulations, we may only issue written acknowledgement for donations made payable to and/or processed directly by Center for Hospice Care or Hospice Foundation. Donations made and/or processed via a third party may not be eligible for a charitable tax donation. If you have any questions regarding charitable contributions, contact Mike Wargo, Chief Operating Officer, at 574.243.2059 or wargom@centerforhospice.org. For specific tax advice, you should visit the IRS website at www.irs.gov or contact your tax advisor.

St Joe Valley Street Rods

Members of the St Joe Valley Street Rods have been selling Barnaby’s Pizza coupons throughout the area since 2010. In that time, they have raised \$86,250 for CHC, including the \$20,000 check they brought with them to the Mishawaka Campus this summer.



Center for Hospice Care CEO/President Mark Murray (center) accepts a check from members of the St Joe Valley Street Rods



Circle of Caring

Champion \$25,000 and above

Mr. and Mrs. Nafe J. Alick
(2) Anonymous
Mrs. Deanna L. Beall
Hiler Family Foundation
Mr. and Mrs. John P. Hiler
Robert J. Hiler Family Foundation
Mr. Mark M Murray

Chairman Circle \$10,000 to \$24,999

1st Source Foundation
22WSBT-TV*
Mr. John S. Abernethy
Alick's Home Medical
Mr. Arthur J. Decio
Elkhart General Hospital Inc.
FDC Graphic Films Inc.
In Memory of Charles C. Hinds
HospiScript
InServ Environmental Services
Ms. Kellie A. Lyons
Memorial Hospital and Health Systems
Mr. David Mimran
Mr. and Mrs. Christopher J. Murphy, III
Mr. and Mrs. Philip A. Newbold
Mr. and Mrs. Terry J. Rodino
Mr. and Mrs. Irving M. Rosenberg
St Joe Valley Street Rods
University of Notre Dame – Office of
Public Affairs and Communications
* Denotes in-kind gift

President's Society \$5,000 to \$9,999

1st Source Bank
Ancon Construction Co., Inc.
Beacon Health System
Dec-O-Art, Inc.
DJ Construction Co
Mr. and Mrs. Bipin Doshi
Garatoni-Smith Family Foundation
Gates Automotive, Inc.
Give with Liberty

Mr. David P. Gratton
Gurley-Leep Automotive Group
Ralph M. and Lucille M. Hass Fund
Interlogic Outsourcing Inc.
Kristin and William Fenech Family
Foundation NE Fund
Kash Family Fund
Mr. and Mrs. Brett E. LaMont
Lois A Leib Charitable Fund
Leighton-Oare Foundation, Inc.
Logan Community Resources
Mr. and Mrs. Allan J. Ludwig
Evelyne Major Fund
Dr. and Mrs. Samuel L. Milligan
NAIFA of North Central Indiana
Mr. and Mrs. J. Thad Naquin
Mr. and Mrs. Todd Schurz
South Bend Sod Busters Inc.
Mrs. Mary Jane Stanley
Streffling Foundation Inc.
Mr. Charles A. Sweeney
TCU Insurance Agency
Tibbo Sound*
WNIT Public Television
WSBT Radio Group*
* Denotes in-kind gift

Helping Hands Society \$1,000 to \$4,999

Mr. and Mrs. David W. Abbott
(6) Anonymous
Mrs. Laverne M. Auger
Dr. and Mrs. David L. Bankoff
Barnes & Thornburg LLP
Beacon Cardiothoracic Surgery Group
The Benevity Community Impact Fund
Mr. and Mrs. Brad C. Beutter
Mr. and Mrs. Dennis W. Beville
Mr. and Mrs. Jeffery A. Bickel
Bill Deputy Foundation
Borden Waste-Away
Mr. and Mrs. James D. Borntrage
Dr. and Mrs. Sam J. Borrelli
Burkhart Advertising, Inc.
Camp Creek Church of Brethren
Chamber of Commerce of St. Joseph
County
Dr. Vinod Chauhan and Dr. Ruta Gandhi

Mr. Alfred H. Choitz
Mr. and Mrs. Phillip T. Clark
Club 15
Community Foundation of Elkhart County
Corson Family Foundation
Mr. and Mrs. Corey D. Cressy
The Cressy Foundation
Crowe Horwath LLP
Mrs. Judith A. DeFries
Mr. Edward L. Delahanty and Dr. Rebecca
A. Delahanty
Mrs. D. Joan Draim
Mr. and Mrs. Matthew E. Edmonds
Mr. and Mrs. Nick Farmer
Ms. Rebecca L. Fear
Mr. and Mrs. John C. Firth
Susan and Tom Fischbach
The Foundation of Saint Joseph Health
System
Flynn Family Foundation
Mr. Trevor Foley
Gates Chevy World Inc.
Dr. and Mrs. John S. Gilbert
Mr. and Mrs. Robert Goeller
Ms. Tami L. Greenawalt
Ms. JudeAnne Hastings
Mr. John F. Hauptert
Mr. and Mrs. Eric R. Heller
Helman Sechrist Architecture
Reverend and Mrs. William R. Hemnig
Mr. and Mrs. Hale S. Henderson, Jr.
Hensley Fabricating & Equipment Co Inc.
Mr. and Mrs. Craig Hiler
Hockey 4 Life Inc.
Mr. and Mrs. Karl E. Holderman
Mr. and Mrs. Milton J. Hopkins, IV
Mrs. Karen A. Hudson
Ms. Katherine Humphreys
Mr. and Mrs. James Huwaldt
Indiana Michigan Power
Indiana Trust & Investment Management
Co.
Mr. and Mrs. Scott M. Johnson
Mr. Stephen C. Johnson
Mr. and Mrs. Michael A. Joines
Mr. James A. Kazmierczak
Mr. and Mrs. James E. Keller
Marijo and Kevin J. Kelly
Mr. and Mrs. Robert Kill
Mr. and Mrs. Gregory M. Kosater

Mr. and Mrs. Andrew K. Kryder
Dr. and Mrs. Jon B. Kubley
Mr. and Mrs. Hubert J. Kuzmich
Ladue Curran & Kuehn, LLC
Ms. Shelli Lanfeare
Mr. and Mrs. Edward W. Leary
Dr. Steven I. Lewallen
Mrs. Barbara C. Lobdell
Mrs. Lyla S. Lockhart
Mr. Michael A. Long
Drs. Rita and Andrew Losiniecki
Mr. and Mrs. Matthew C. Magor
Ms. Mary Ann Mahoney
Jessica and Paul Maich
Mr. and Mrs. Ervin D. Marohn
Mr. and Mrs. David A. Mauro
May Oberfell Lorber
Mr. James W. McCann
Edward V. and Margaret A. Minczeski
Fund
Mr. and Mrs. James H. Monserez
Mossberg & Co., Inc.*
Mr. and Mrs. Kelly Moyer
MutualBank
My Intent Project
Mr. Stephen P. Nani
Mr. Wallace W. Neumann
Northern Indiana Public Service Company
Notre Dame Federal Credit Union
Mr. Joseph S. Orban
Mr. John G. Pfeil
Quality Dining, Inc.
The Radiology Inc. Foundation
Recycled/New Pallets
Ms. Barbara Resnik
Mrs. Lisa Rodriguez
Mr. Craig W. Rogers
Mrs. Janice Salmander
Sassy's Cafe Inc
Cyndy and Steve Searfoss
Senior 1 Care
Dr. and Mrs. William D. Shepard
Mrs. Kathryn L. Shields
Mr. and Mrs. David A. Simper
South Bend Cubs
Roberta and Thomas Spencer
St Joseph County Parks Department*
Steel Warehouse Company, Inc.
Mr. and Mrs. Russell Steele

Ms. Pamela K. Stephenson
Studebaker National Museum, Inc.
Ms. Pamela Sysinger
Dr. Richard W. Tarara
Teachers Credit Union
The South Bend Clinic, LLP
TK Steel Inc.
Truist
Ms. Lori Turner
United Way of Central Maryland
Mr. and Mrs. John D. Vandall
Vanguard Charitable Endowment Program
Mrs. Wilma Veldman
Mr. and Mrs. Robert A. Wade
Mr. and Mrs. Reginald H. Wagle
Mr. Martin E. Wagner
Mr. and Mrs. Wendell W. Walsh
Mr. and Mrs. Michael J. Wargo
Dr. Catherine and Mr. W. Andrew Whitcroft
Mrs. Dorothy Wiekamp
Mr. and Mrs. William N. Wilson
Mr. and Mrs. Benjamin Ziolkowski
* Denotes in-kind gift

Heart of Hospice Club \$500 to \$999

AHEPA Chapter 100 Charties Inc.
American Legion Riders Post #357
Ms. Virginia K. Anderson
(4) Anonymous
Arkos Design
Mrs. Janet I. Arnold
Mr. Richard E. A. Atkinson
Roger Bacon Academy
Mr. Jerry Berntsen
Attorney and Mrs. Robert C. Beutter
Big C Lumber
Mr. and Mrs. Dennis L. Carpenter
Ms. Judy Cheatham
Christ the King Catholic Church
Mr. Christopher A. Cinal
Mr. Arlin Cochran
Mr. and Mrs. Christopher L. Craft
Ms. Kathleen M. Crane
Cressy & Everett Real Estate
Mr. and Mrs. Dean L. Cripe
Mrs. Nora K. Crosen

Dr. and Mrs. P. Michael Kelbel
Mrs. Ernestine Kelsey
Governor and Mrs. Joseph E. Kernan
Mr. and Mrs. Denis K. Kidde
Ms. Rebecca A. Kizer
Ms. Amy Knapp
Knights of Columbus International
Bowling Association
Lt. Col. Renee M. Knippel
Koontz Lake Association, Inc.
Mrs. Jurate Z. Krabill
Mrs. Christine V. Deitchley
Mr. Michael J. Kruk
Mr. and Mrs. Edwin Ksiezopolski
Label Logic Inc.
Mr. and Mrs. David Labrum
Ms. Sarah Lambert
Mr. and Mrs. William Langdon
Ms. Terri J. Lawton
Mr. and Mrs. Mark W. Leblang
Mrs. Jill A. Lester
Ms. Teresa Duncan
Mrs. Sharon K. Eberhard
Ms. Abigail Eicher
Mr. and Mrs. Francis K. Ellert
Dr. and Mrs. Alan Engel
Dr. and Mrs. Howard R. Engel
Dr. and Mrs. Michael A. Englert
Mrs. Tamara R. Ennis
Mr. John Foegley
Foegley Landscape Inc.
Dr. and Mrs. Stephen A. Fredman
Mr. and Mrs. James W. Gerber
Mr. and Mrs. Robert H. Giver
Ms. Vicki Gnoth
Goethals & Wells Funeral Home
Mr. DeFoe L. Greenawalt
Mrs. Ruth M. Haag
Mr. Charles R. Habic
Mr. and Mrs. James A. Hanley
Mr. M. Bruce Harlan
Mr. John P. Harringer
Mr. Scott R. Harrison
Mr. Leo J. Hawk
Mr. and Mrs. Clyde D. Hayes
Mrs. Maralee Hertel
Mr. Ronald K. Hoffer
Mr. and Mrs. Kenneth E. Holderman
The Horton Group
Mr. and Mrs. Gregory P. Howell
Ms. Jane E. Hunter
Dr. Anthony K. Hyder
Dr. Nancy L. Ickler
Ideal Consolidated, Inc.
Ingersoll Rand Corporate Office
International Association of Asbestos
Workers, Local #75
Mr. and Mrs. Paul F. Janssen
Francis and Mary Ann Jones Fund
Kappa Kappa Kappa, Inc. (Epsilon
Lambda Chapter)

Trinity Health
United Way of Elkhart County, Inc.
University of Notre Dame/Accounts
Payable Office
Veldman's Auto Parts Inc.
Mr. Ralph M. Vollmer
Mr. and Mrs. Perry Watson
Dr. and Mrs. Troy Weirick
Welch Packaging Group, Inc.
Welter Foundation
Mr. Robert J. Widdis
Mr. Mac Willingham
Dr. Douglas J. Wilson
Mr. Robert E. Woodward
Mrs. Nancy K. Wuthrich
Mrs. Marie J. Yoder

Caregiver's Alliance \$250 to \$499

Mr. and Mrs. Timothy J. Abeska
Mr. Christopher Adams
Mr. and Mrs. Robert W. Annis, Jr.
(5) Anonymous
AT&T Foundation
Mr. Reginald F. Bain
Mr. and Mrs. Jeffrey A. Balsley
Mrs. Shelly Baucco
Mrs. Naydean V. Beck
Mr. and Mrs. Gary G. Behnke
Mr. William H. Berkshire
Mr. and Mrs. Andrew Beutter
Mr. and Mrs. David R. Biek
Ms. Janene Bishop
Ms. Tina Bishop
Mr. and Mrs. Brian Borger
Mr. Aaron J. Bradford
Mr. and Mrs. D. Scott Brennan
Mr. and Mrs. Randall Brewers
Mr. and Mrs. William Brewster
Senator and Mrs. John E. Broden
Ms. Kaye M. Brown
Mr. Todd Bruce
Mr. and Mrs. Randy Burkhardt
Mr. and Mrs. John T. Bycraft
Mrs. Melia Byrer
Centier Bank
Century Chemical Corporation
Mr. and Mrs. James R. Chandler
Ms. Debbie J. Charleston
Mr. Dave Stichter
Mrs. Isabel A. Stickley
Mr. and Mrs. Richard W. Stout
Mr. and Mrs. Dennis Strader
Dr. Gary M. Sunada
Mr. and Mrs. David E. Swanstrom
Mr. and Mrs. Christopher J. Taelman

Patricia and Frank Criniti
Ms. Anita K. Culp
Culver Tool & Engineering, Inc.
Ms. Stephanie Cutter
Mr. Morris L. Dahl
Mr. and Mrs. George Davis
Mrs. Sally Davis
Mr. Scott Davis
Mr. and Mrs. Nicholas J. DeCicco
Mr. and Mrs. Patrick D. Delahanty
Delta Theta Tau Sorority (Zeta Zeta)
Gerry Dickey
Mr. Stephen K. Dinehart
Mr. Gary L. Dominy
Mrs. Rhonda L. Dunlap
Mr. John N. Duvall
Mrs. Dana Dyczko
Colonel and Mrs. Todd L. Eads
Mr. and Mrs. Philip J. Faccenda, Jr.
Dr. Frederick J. Ferlic
Mr. and Mrs. Joseph Fimbianti
Ivan W. Fisher Charitable Fund
Mrs. Patricia A. Flowers
Ms. Constance J. Fox
Mr. and Mrs. Charles P. Fricano
Ms. Marjorie E. Fuller
Ms. Pam Fuller
Mr. and Mrs. Jay Ganger
Ms. Janet Gard
Ms. Jeannie Geissler
Ms. Elizabeth Ruth Germano
Mr. and Mrs. James V. Gibbons
Mr. and Mrs. Paul J. Gilsinger
Ms. Claire Gisel
Mr. Geoffrey Glanders
Mr. and Mrs. Gerald F. Goeller
Mr. and Mrs. Raymond F. Goeprich
Mr. and Mrs. Andrew Goodale
Mr. Chad Gradowski
Ms. Heather Gradowski and Mr. Chris
Blockwood
Mr. and Mrs. Robert Gross Charitable
Contribution Fund
Mr. and Mrs. Dick Growcock
Ms. Connie S. Haines
Hallmark Real Estate
Dr. and Mrs. Walter H. Halloran
Mr. Robert D. Hammon
Mr. and Mrs. Ernie Harris
Mr. David K. Hathaway
Ms. Julianne Havens
Mr. and Mrs. Robert Heiden
Mr. and Mrs. Carter F. Henrich
Mr. Jason Hershberger
Mr. Andrew Hill
Ms. Priscilla B. Hoag
Mr. and Mrs. Pete Hochstetler
Mr. and Mrs. David L. Hoffer
Mr. and Mrs. Scott Hollett

Mrs. Doris Holtzinger
Honeywell International Charity
Matching
Mr. and Mrs. Ronald J. Howard
HRP Construction Inc.
Mr. Dennis L. Huff
Mr. Larry Huggett
Mr. Roger D. Huneryager
Mrs. Mary S. Hurley
Mrs. Judith M. Hurst
Ms. Tamara R. Huyvaert
Mrs. Tina M. Jankowski
Ms. Francine L. Jaworski and Mr. Curt
Paluzzi
Mr. David Jessup
Mr. Daniel R. Johnson
Mr. and Mrs. Morris S. Jones
Mr. T. Steven Jones
Kaniewski Funeral Homes, Inc.
Mr. and Mrs. Jordan Kaser
Mr. Stephen Kash
Mr. Lewis D. Kimble
Mr. and Mrs. Dennis M. King
Mr. Andrew L. Klawitter
Ms. Barbara Koenig
Mr. Charles Kratz
Mr. John A. Kubinski
Kuert Concrete, Inc.
Ms. Judith A. Lacy
Mr. and Mrs. Douglas M. Lantz
Mr. and Mrs. Andrew Lappin
Mrs. Jill C. Lehman
Mr. and Mrs. Larry J. Lemler
Mrs. Patricia Leslie
Ms. Samantha Lestinsky
Mr. and Mrs. Peter J. Liegl
Mr. Jeffrey P. Lindquist
Mr. Dennis P. Long
Ms. Joan Lovell
Ludwick Graphics Inc.
Mr. and Mrs. Stephen J. Luecke
Mr. and Mrs. Roger E. Lumm
Mrs. Claire Louise Luther
Mr. and Mrs. Gerald Lutkus
Mr. Matthew MacLean
Mrs. Mary Ellen Maenhout
Huong T. Mai
Mr. and Mrs. John E. Markiewicz, Jr.
Marshall County - County Offices
Martell Electric, LLC
Mr. and Mrs. Michael G. Mathis
Ms. Margaret E. Maupin
Maurer Well Services, Inc.
Ms. Mary A. McClead
Mr. Kenneth A. McIntyre
Mr. and Mrs. Collin Meissner
Ms. Odette M. Menyard
Ms. Denise Merrill
Mr. and Mrs. Danny L. Mestach

Mr. John A. Meuleman
Mrs. Barbara A. Miller
Mr. Blake C. Miller
Mrs. Margaret Moran
Ms. Linda C. Mullenix
Mr. David I. Myers
Mr. and Mrs. Wes J. Nafziger
Mrs. Barbara K. Neidig
Newmark Grubb Cressy & Everett
Mr. Patrick L. Niezgodski
Mr. and Mrs. Donald E. Nuner
Mr. and Mrs. James O'Brien
Dr. Roderick S. O'Brien
Old National Bank
Oliver Ford Lincoln Mercury
One Source Packaging
Ms. Janet E. Pagels
Mr. and Mrs. Ara R. Parseghian
Mrs. Wendy J. Pavich
Mrs. Cathy Perkins
Mr. and Mrs. Matthew J. Pletcher
Mr. and Mrs. Ward A. Poulos
Ms. Beth A. Prillwitz
Mr. and Mrs. William F. Probst
Pulmonary & Critical Care
Associates, PC
Tom and Jacki Quigley
Mrs. Kathleen O. Rafferty
Mr. and Mrs. Lonn A. Reinhardt
Mr. and Mrs. Michael Rhoades
Mrs. Clarissa Riddle
Mrs. Diana J. Riddle
Mrs. Joan M. Riffel
Mr. and Mrs. Douglas Roch
Loanna and Dick Rockstroh
Mr. Gregory C. Rogers
Mr. Jordan M. Rowell
Mr. Timothy A. Ruff
Mr. Keith E. Rupel
Reverend Daryl M. Rybicki
Dr. Susan Sakimoto
Sard Verbinen & Company
Ms. Lisa Saylor
Ms. Barbara A. Kubiak and Mr. Barry
L. Schleiger
Ms. Julia A. Schnapp
Mrs. Cindy Schoenfeld
Schwartz Law Office PLC
Mr. and Mrs. Michael B. Shaffer
Mr. and Mrs. Ralph C. Shive
Mr. Robert J. Shriner, Jr.
Ms. Rachel Slentz
Mr. and Mrs. Andrew J. Sommese
South Haven Packaging Inc.
St Joseph Valley Assoc. Plumbing
Heating Cooling Contractors
Mr. Thomas R. Stafford
Mr. and Mrs. Donald L. Stanley
Mr. and Mrs. Richard A. Stefaniak

Mr. and Mrs. Steven J. Sterling
Ms. Shirley Stevens
Mr. James R. Stoll
Mr. and Mrs. Stephen A. Studer
Mr. and Mrs. Frederick C. Sulok
Mrs. Edna M. Swihart
Mr. and Mrs. Rob Swihart
Hermira Takacs
Ms. Patricia L. Tassell
The D. D. Reckner Co.
Mr. and Mrs. Roger L. Thomas
Thor Diesel Club
Tom's Car Care Center, Inc.
Mrs. Ajean Treat
Mrs. Amy E. Tribbett
Mr. and Mrs. Bill Troendle
Tuesley Hall Konopa, LLP
United Way of Central Indiana, Inc.
Ms. Helen Ursery
Mr. and Mrs. Dominic Vachon
Mr. and Mrs. James C. Vanderkam
Mr. and Mrs. Jon E. VanVactor
Mr. Ray D. VanVynckt
Mr. and Mrs. Mark P. Veldman
Mr. and Mrs. Alberto Verteramo
Mr. and Mrs. William G. Wagoner
Walker Parking Consultants Inc.
Ms. Susan L. Walker
Mrs. Carole H. Walton
Mrs. Carol L. Weber
Ms. Kathryn D. Weber
Mrs. Marie E. Weiss
Whitmer Appraisal Inc.
Mr. and Mrs. Benjamin J. Wilson
Mr. and Mrs. Dave Winrotte
Mr. James Wiskotoni
Ms. Alice Wolff
Womens Council of Realtors
South Bend
Mr. and Mrs. Kurt D. Youngs
Mr. and Mrs. Paul W. Zehner
Mr. and Mrs. David Ziker
Mr. and Mrs. James R. Zimmerman
Zion United Church of Christ

Planned Giving

Estate of Esther O. Craig
Estate of Maria and Robert W.
Dockstader
Estate of Mary Jane Erier
Estate of Olga Fister
Estate of Louis E. Flora Trust
Estate of John H. Lloyd, III
Estate of Patricia L. Tollens
Estate of Suzanne L. Wallin

In Memory

The following gifts were made to the Hospice Foundation between 4/1/2016 and 7/31/2016. We are very grateful for these gifts as they enable us to fulfill our mission to improve the quality of living.

Every effort has been made to ensure the accuracy of this listing. If you wish to report an error or omission, please call our Development Office at 800.413.9083. Any corrections will be in the next issue of CROSSROADS.

In Memory of Stephen (Steve) P. Abel

Mr. Jack Clark
Bailey and Justin Clark
Jane Feller
Connie and Ron Fields
Mr. and Mrs. Michael P. Koons
Mr. and Mrs. Andrew K. Kryder
Mr. Jon B. Miller
Linda and Fred Myers
Carla and Brad Newcomer
Marge and Verlyn Nofziger
Dick Paull
Marvene and Lamar Pippenger
Erin and Zach Potter
Luann and Steve Snyder
Synergy RV Transport, Friends & Family
Kelly Thomas
Laura and Bob Zell

In Memory of Larry Keith Albert

Mr. Danny R. Albert
Jary and Mike Bailey
Sharon and Joe Fain
Joy and John Jennings
Kay and Tom Langdon
Rob Swathwood
John Thieling
Cathy and Chuck Welch
Vicki and John Willoughby
Joy Wilson and Family

In Memory of Joanne Aldridge

Evelyn Durocher

In Memory of Nancy D. Alerding

Jean and Rich Grontkowski
Mr. and Mrs. Daniel E. Lisenko
Kathie Matuszak

In Memory of Veronica J. Allen

Stacy L. Allen

In Memory of Grace L. Allin

Ms. Joyce M. Chisholm
Mr. and Mrs. Roger Hamburg
Stephanie and Ryan Tragesser
Barbara and Patrick Wolf

In Memory of Richard J. Allin

Stephanie and Ryan Tragesser
Barbara and Patrick Wolf

In Memory of Agnes (Lorraine) L. Alwine

Sandy Bailey and Family
Mr. and Mrs. V. Randall Harvell
Barbara and Gene Jagla

In Memory of Jay W. Anderson

Mr. and Mrs. Paul L. Miles

In Memory of Joan L. Anderson

Deborah Kruyer
Marilee and Dave Nowak

In Memory of Kent H. Anderson

Nancy and Duane Anderson
LaDonna Revirile Dicks

In Memory of Dustin Paul Annis

Tami Ennis

In Memory of Louise Antonazzi

Arlene and John Antonazzi

In Memory of Monzetta Archer

Mr. and Mrs. Phillip B. Hite

In Memory of Samuel W. Archer

Mr. and Mrs. Phillip B. Hite

In Memory of Steven Richard Arko

JA Wagner Construction, Inc.
Stacey and Terry Rodino

In Memory of Peggy H. Baker

Marshall Baker

In Memory of Sharon E. Ball

Ms. A. Jane Parker

In Memory of Frank F. Banicki

Gina Banicki Beyer

In Memory of Marlene Banks

Mr. Timothy M. Banks

In Memory of Nanette Bard

Sharon and Matt Edmonds
Mr. and Mrs. Michael A. Joines
Mr. and Mrs. Mark P. Veldman
Mr. and Mrs. Thomas F. Veldman

In Memory of Allan (Al) Barnes

Deanna Coles
Sharon Stahly

In Memory of Robert (Bob) A. Barr

Mr. Steven L. Bollero
Kate Crane and Sara Jessup

Susan Rogers Hagen

Mary T. Reber

Philip Rogers

In Memory of Ethel Ann Bartlett

Frances Buysse

In Memory of Tracee Ann Bartley

Ms. Tamara A. Erwin
Mrs. Helen Rockhill
Cathy and James Rockhill

In Memory of Marcus Edward Bartz

Linda Alexander
Janet Pagels

In Memory of Richard (Dick) A. Beall

Mrs. Deanna L. Beall

In Memory of Anita Bedford

Constance L. Daugherty
Marilyn and Merrill Donoho
Dr. and Mrs. Thomas Gruszynski
Marlene and Ted Reilly
Helen Retek
Joan Rothballer
Dorothy Starzynski
Mary Kay Starzynski

In Memory of Evelyn Ruth Bellman

Jeri and Duwaine Elliott
Patricia and Larry Hollar
Sharon and Dick Hollar
Mr. and Mrs. Richard W. Jenkins
Lisa and Rex Miller
Deanna and Thurman Spears
Betty Stillson and Family

In Memory of Martha Benko

Mrs. Arlene Hart

In Memory of Emil Benko

Mrs. Arlene Hart

In Memory of Clift P. Bergemann

Sharon and Matt Edmonds
Mr. and Mrs. Michael A. Joines
Mr. and Mrs. Mark P. Veldman
Lu and Dick Laughlin

In Memory of Dave Pendleton

Helen and Dave Pendleton
Joan Shafer and Cheryl Gridley
Mr. and Mrs. Mark P. Veldman
Mr. and Mrs. Thomas F. Veldman

In Memory of Donald Harold Berger

Mr. and Mrs. Timothy M. Powers

In Memory of Mary Jane Berger

Mr. and Mrs. Virgil D. Mochel

In Memory of Ann Berntsen

Mr. Jerry Berntsen

In Memory of Leona Bidlack

Mr. and Mrs. Gerry Bidlack

In Memory of Barbara Rose Bikowski

Mr. and Mrs. Dan A. Baughman
Ms. Terri A. Lemert

In Memory of William (Bill) Robert Birr

Doug's Alignment and Complete Service
Lois Losee
Kara and Doug Sutton
Millie and Ron Zentz

In Memory of Carol A. Bleck

Mr. Jerome D. Bleck

In Memory of Larry Dean Bleiler

Ms. Alice W. Chan

In Memory of Eric J. Blevins

Mr. and Mrs. Charles E. Bradford

In Memory of Gertrude A. Boembeke

Mrs. Artie J. Bussert

In Memory of Donald L. Bostwick, Sr

Cheryl and David Ziker

In Memory of Edwin V. Bottorff

Mrs. Pearl M. Bottorff

In Memory of Janelle A. Bottorff

Mr. Ronald K. Hoffer

In Memory of Paul E. Bowers

Somers Square East Homeowners Assoc.

In Memory of Raymond (Ray) G. Branchick

AT&T Telecom Pioneers South Bend
Drevs & Hancz, CPAs
Mrs. Linda S. Heston
Ruth and Stanley Nycz

In Memory of Hal L. Bricker

Tami Ennis

In Memory of Eugene (Doc) W. Brickner

Vista Health and Wellness

In Memory of Dominic (Nick) F. Brizzolara

Martha Boyer

Elizabeth Brown

Kathy and Dennis Foust

Marie and Doug Hoeffler

Mr. and Mrs. Steve Keiser

Sue and John Wendel

In Memory of Barbara A. Brown

Mrs. Nancy K. Detert
Jeanine Hoffman
Mr. and Mrs. Thomas E. Mumaw

In Memory of Michael E. Brown, Sr

Mrs. Karen S. Bauer
Sue Shellenberger
Dolly and Frank Sikorski
Michelle A. Tharp
Ron Weisenbacher

In Memory of Jerome (Jerry) Brumer

Ruth and John Keely
Second Harvest Foodbank of Southern Wisconsin—Lisa, Linda, Laura, Katie, Kris, Chris, Tami

In Memory of Eldon D. Buell

Judy and Don Ruszkowski
Mr. Richard S. Ruszkowski

In Memory of Emma L. Buell

Judy and Don Ruszkowski
Mr. Richard S. Ruszkowski

In Memory of Russell (Abe) E. Bulla

Bonnie and Don Bulla
Mr. and Mrs. Stephen P. Maxwell
Betty Peddycord

In Memory of Marilyn M. Bullard

Kay and Jim Adams
The Adamson Family
Linda and Duane Arnold
Margaret Beehler
Dane and Joel Bourdon
Connie Hansen
Verdene and Harold Huhnke
Lois Leib
Anonymous
New Acre Nursery & Landscaping, Inc.
Tami Ennis

In Memory of Paul B. Glass, DDS, PC

Paul B. Glass, DDS, PC

In Memory of Martha Joan Choitz

1st Source Bank
Barb and Dave Ault
Gertrude and Ted Brown

Diana Rohrer

Susan Rowe

In Memory of Lyle Erwin Bunn

Shirley Hartnagel

In Memory of Imogene E. Burton

Liz and Randy Noland

In Memory of Maxine R. Butler

Kevin Howell
Rose Ann and Dennis Janowiak
Helen Janowiak
Marcia and Joe Kelly
Thomas Stefaniak
Mr. and Mrs. Walter Stefaniak
Isabel Stickley
Joan T. Williams
Mary Ann and Tom Wozniak

In Memory of Joyce Breveard Butts

Kerri A. Breveard

In Memory of Patricia (Pat) Jane Byrd

Ms. Emily L. Bush
Mr. Larry Byrd

In Memory of Martin (Marty) Craig Canfield

Donna Grauel
Shirley and Craig Grauel
State Farm Insurance - Tim Grauel

In Memory of Catherine Elizabeth Capes

Tami Ennis

In Memory of Dean Kenneth Carbiener

Mrs. Karol Carbiener

In Memory of Alma L. Carey

Alice Backs
Kelly and Chad Carey
Cheryl Dauer
Carole and Clifton Grimm
The Lyons Family

In Memory of Joseph (Joe) Carlin

Koontz Wagner Services, LLC

In Memory of Bryon L. Carlson

Sharon Weldy

In Memory of John H. Carlson

Betty Carlson

In Memory of Marjorie Carlton

Anonymous

In Memory of Betty Mae Cassler

Annette and Ted Noell

In Memory of Deborah (Midget) A. Cawley

Mr. Brian Conwell

In Memory of Paul R. Chagnon

Paul B. Glass, DDS, PC

In Memory of Thomas F. Cook

1st Source Bank
Barb and Dave Ault

Gertrude and Ted Brown

A. H. Choitz

Mr. Terry L. Clark

Kathleen and John Coriden

Dorothy Foster

Lois Gier

Pat and Art Grundke

Yvonne and Tom Horvath

Bertha Kelsey

Kruggel, Lawton & Company

Pat Laing

Ms. Nancy Lorimer

Mrs. Beatrice E. Miller

Mr. Greg Oesch

Lucy and Bob Schall

Gloria and John Sheneman

Sisters of the Holy Cross Finance

Mr. and Mrs. Gary Tillman

Ms. Evelyn G. Walker

Mr. and Mrs. James R. Ward

In Memory of Rose Ciesielski

Mr. and Mrs. Louis A. Ciesielski

In Memory of Stanley Ciesielski

Mr. and Mrs. Louis A. Ciesielski

In Memory of Brenda S. Cline

Jim Aldrich
Tami Ennis
The Givens Family
Ms. Jeanne F. Humphries
Sandra and Ed Krill
Mr. and Mrs. Veachel Peters
Ritschard Bros., Inc. and Employees
Kathy and Lester Smith
Ruth and Sam Sousley

In Memory of Lesley Ann Cole

Rose Ann and Vic Antkowiak
Cynthia and Patrick Case
Trace Cole
Laura and Bill Hathaway and Family
Mr. and Mrs. Nathan T. Meadimber
Anila Mondabaugh
Charles and Kathy Pearson

In Memory of Charles L. Coleman

Juanita Searfoss
Ms. Janice Swindle

In Memory of Elizabeth (Betty) Colt

Liz J. and Larry D. Colt

In Memory of Terry M. Colt

Liz J. and Larry D. Colt

In Memory of Everett D. Colvin

Paula and Ron Babcock
Mr. and Mrs. Mark A. Crawford
Darla and Evan Gast
Amy Reed Paton
Sheri and Jim Reeve
Irene and Walter (Mike) Taylor

In Memory of Phyllis E. Comeno

David Manges

Maxine Manges

In Memory of James (Jim) M. Conn, Jr

Mr. and Mrs. Gary E. Adamson
The Blankenbaker Family
Mr. and Mrs. William L. Bussard
Cousins—Alan Hurley, Steve Hurley, Marcia Kidd, Lynn Whaley and Spouses

In Memory of Frank L. Crager

Sally and Bill Faus
Ms. Deborah Fessenden
Pat and Steve Gard
Noell K. Woodruff Giudice
Mr. Stephen Kash

Mr. and Mrs. Van Kessler

Ms. Constance A. Malcom

Mr. and Mrs. Gary Mann

Ms. Mary Ann Nichols

Mr. and Mrs. Richard R. Rhodes

Mrs. Clarissa Riddle

Kelly Smith

Kathy Stroup

Kathy Thornton

In Memory of Marie Elizabeth Cook

Mary and Tim Andrews
Children of Marie's Brother, Bernard Doetsch
Anna Frick and Margaret Megyeri
Jeanne Hauptert
John F. Hauptert
Ruth Hess
Linda and John Kohn
LuAnn Shaffer Insurance Agency, Inc.
Mrs. Kathleen Morris
Carla and David Motts
Mr. and Mrs. Elden Motts
Ruth Trinkley

In Memory of Sharron Lee Cook

Anonymous
Mr. and Mrs. Thomas Beres
Kay and Jim Collins
Mr. and Mrs. James J. Cook
Ms. Marilyn A. Cook
Joan and Gerald Gerard
Mr. and Mrs. Dennis L. Harper
Mary Anne and Harvey Hurst
Mrs. Rosemary Jordan
Kesling Social Committee
Anonymous

In Memory of Patricia (Pat) M. Deafenbaugh

Amanda N. Gard

In Memory of Donnabelle (Donna) DeCloedt

Helgeson Steel, Inc.
Ideal Consolidated, Inc.
Martell Electric, LLC
Margie and Bruce Miller
Catherine Peterson
Sharon and Larry Waggoner
Ann and Dan Wierzbecki

In Memory of Dolores Irene DeLaurelle

Mr. and Mrs. Curtis B. Adams

In Memory of Norman Paul DeLaurelle

Mr. and Mrs. Curtis B. Adams

In Memory of Patricia J. Cooper

Carol Burgess

In Memory of Rebecca (Becky) A. Cooper

Mary Jane Liszewski

In Memory of Richard E. Corl

Sally and Eugene Janezich

In Memory of Keith Daniel Corson

Corson Family Foundation

In Memory of Rosalie P. Corson

Corson Family Foundation

In Memory of Nancy and Bob Beghtel

Bobbi Dion Family
Cindy and Greg Dreesser and Family
Holly Kersten Family

In Memory of Michael Dean Cripe

Mr. and Mrs. Dean L. Cripe
Label Logic, Inc. – Jeff Cripe

In Memory of Edna Jane Cruise

Ted Cruise

In Memory of James (Bob) Robert Crutchfield

Cynthia and Jeffrey Bergstrand
Terry and Jim Cinal
Ms. Laura M. Dorbin
Pat Feyos
Mr. and Mrs. Ronald L. Gill
John Young Middle School Staff

Mr. and Mrs. Charles M. Kiefer

Jim and Carol Mahler

Leona and Jerry McClanahan

The Meritor Team

Lorie Rauch

University of Notre Dame

In Memory of Myrna R. Daube

St. Joseph County Republican Womens Assoc.

In Memory of Darwin Carl Davis

Anonymous

In Memory of Marguerite Louise Deal

Bev and Ken Delinski

In Memory of Patricia (Pat) M. Deafenbaugh

Amanda N. Gard

In Memory of Wayne Martin Dixon

Sally and Joe Bottorff

In Memory of Geraldine (Gerry) J. Doctor

Ms. Lori A. Allison
Ms. Nancy M. Isbell
Abbey, Andrea and Chris Shay

In Memory of Frances (Fran) L. Dodd Phillips

Mr

In Memory (continued)

In Memory of Bernard E. Doering

Mrs. Karol Carbiener
Mr. and Mrs. Kenneth J. Carbiener
Barbara J. Doetsch
Thomas Flint and JoAnn DellaNeva
Dr. and Mrs. Thomas A. Fogle
Mr. and Mrs. Timothy A. Fulnecky
Mr. and Mrs. Michael O. Garvey
Iris M. Goerner
Steven A. Goldberg, CPA
Gerry Kleevorn
Teresa Marcy
Birdie McElroy and Chris McElroy
Louise and Bill McGiln
Ms. Odette M. Menyard
Jane (Doetsch) and Paul Pasin and Family
Catherine Perry
Dr. Isis J. Quinteros
Mr. Stephen J. Roper
Ms. Rebecca Rozelle
SUNDEF IV Classmates
University of Notre Dame
University of Notre Dame, Liberal Studies
Program
Carole Walton
Pat and Ron Weber and Family
Joyce Wegs
Mr. and Mrs. James L. Wittenbach
In Memory of Jack D. Doering
Ms. Jan Blaney
Sue and Paul Daiber
Angela Dandino
Janis and Gerry Goss
Angie and Greg Lee
Juanita and Dave Lentz
Betty and Kenric McCrory
Annie and Kevin McCrory
Leslee McCrory
Christine and John Murphy
Nickell Moulding Company, Inc.
Cheryl and Dave Reed
Carlye Reimer
Mike Schade
Phyllis J. Schade
Mr. Todd Schlosser
Sue and Cam Snyder
In Memory of Ruthanne (Dolly) Donahue
Becky Kizer
In Memory of Maxine (Mickey) Donaldson
Mr. and Mrs. Daniel J. Kasper
In Memory of Charles J. Drain
Joan Drain
Doris Kepler
Linda and Tommy Kozak
L.L. Low Associates, Inc. – Families of Sharon
and Larry Low, Laura and Kevin Low,
Dorothy and Kerry Low, Judy and Kelly Low,
Kim and Gary Newman

Mary McGriff
Mr. and Mrs. Eugene E. Nowicki
Karla and Bruce Schumaker
Rita and Guy Stancati
In Memory of Louise Draves
Penny and Richard Joo
North Woods Village Family
Teri and Chris Vitale
In Memory of Mary (Jane) J. DuBois
Patricia and Russell Becker
Marjorie Elser
Peg Elser
Mr. and Mrs. Richard B. Elser
Joyce and Tim Gaff
Karen and Stan LeMieux
New Paris Missionary Church
In Memory of Robert (Skip) P. Dudeck
Mr. and Mrs. Dale Brown
Mr. and Mrs. Theodore Bystry, Sr
Sue and Kevin Cullen
JoAnn Cummins and Family
Jayne and John Dregits
Mr. David Dudeck
Mary Dudeck and Ed Carrico
Shirley Dudeck
Terri Feece and Sherri Wenrick
Jill and Mark Fleishman
Becky Fletcher
Marilyn and Ron Fletcher
Harriet Flowers
Thomas M. Foley
Mr. and Mrs. Stephen J. Horvath
Mr. and Mrs. Joseph T. Iams
Beverly Jacques
Mr. and Mrs. Richard Jankowski
Ms. Helen J. Kennedy
The Klingerman Family
Marcia and Greg Kope
Mrs. Sharon Kovach
Colleen Kubacki
Colette and Matt Magor
Mr. Pete McColleston
Mr. and Mrs. Donald E. Nuner
Val and Steve Perona
Pfeifer Morgan & Stesiak
Place Builders, Inc.
Mary and Ray Platz
Sandy and Ken Potokar
Roger Bacon Academy
Tim Ruff
Fred Ulbricht
Underground Pipe & Valve, Inc.
Lyn Urgonski
Wellbrooke of South Bend
Mr. and Mrs. Ronald G. Whitesel
Barbara and Bill Woods
The Zellers Family—Norma, Jennifer, Donald

In Memory of William (Bill) L. Dunlap
Jan and Terry Hartzler
Julie and Ray Mann
Deana and Lee Markley
Pebblestone Homeowners Association
The Randall, Talbert, and Ciceri Families
Jane Rapp
Stephanie and Jacob Yahne
In Memory of Arthur L. Edwards, Sr
Pat and Don Opaczewski
Kimbell Reitz
In Memory of Hendrika (Riek) Eggink
Mrs. Elaine Holowatuk
In Memory of Judith Elifritz
L.L. Low Associates, Inc.
In Memory of Betty L. Engel
John Clark
Janet Ferguson and Family
Darlene Fisher and Family
Jackie and Chuck Florian
Carole and Duke Florian and Family
Dr. Fredrick May
Oliver Ford Lincoln Mercury
Marabelle and Robert Vore
Kathy Whitmer and Lillian Moore
In Memory of Mary Jane Erler
John Swantz
In Memory of Nicholas (Nick) John Eufemi
Mary Corban
Thomas M. Foley
Joyce Eufemi, Michael, Janice and Families
Elaine Gaulin
Carole V. Grove
Martha and Scott Hollett
Mr. and Mrs. Philip M. Plummer
Somers Square East Homeowners Assoc.
In Memory of Joseph Farkas
Bricklayer #4 South Bend Chapter Office
Louise and John Gingle
Dee Kois
Leona and Jerry McClanahan
Old Fort Building Supply, Inc.
Heather and Mark Pepple
Linda Querry
Carmelo Ritschard
St Joseph Valley Building & Construction
Trades Council
Anita and Andy Tom
Donna and Johnnie Tom
In Memory of Mary (Kay) Katherine Farver
Barbara and Harold Miller
In Memory of Richard (Dick) Dale Farver, Sr
Barbara and Harold Miller

In Memory of Evelyn L. Faull
Mr. and Mrs. Michael C. Bailey
In Memory of Lois Fell
Julianne Easterling
Sandie and Tom Pogue
Jim Suth
Susan Suth
In Memory of Mary Ferlic
Judy Beckham and Holly Graber
In Memory of Deanna (Dea) Dorothy Filchak
Ms. Pamela S. Schau
Patricia and Alex Szabo
In Memory of Reno J. Fimbianti
Mr. and Mrs. Robert W. Clayton
Mr. and Mrs. Thomas A. Cutts
Carol Helmuth
Marsha and Roger Hostetter
Ingersoll Rand Corporate Office
Ms. Irene Nieroda
Northwood High School Faculty and Staff
In Memory of Mary Alene Fink
Kathy Bakos
In Memory of Frances Rosemary Fischer
Mrs. Samantha A. Nebel
In Memory of Carl F. Fitz, Sr
Becky Kizer
In Memory of Elizabeth (Betty) Ann Fleming
Enid Fisher
In Memory of Debra Lynn Flora
Brenda and Bob Wynn
In Memory of Virginia (Ginny) M. Folker
Mr. and Mrs. David C. Bemenderfer
Ms. Lisa L. Meade
Karen and Ryan Meade
Mr. and Mrs. Donald D. Miller
Ms. Eleanor R. Rensberger
Mr. and Mrs. William L. Tarman
The Viars, Saggar, and Davis Families
In Memory of Betty Rose Foster
Connie Tomkiewicz
In Memory of Dorothy Foster
A. H. Choitz
Ms. Leslie Choitz
In Memory of Jane O. Fox
Mr. and Mrs. Gregory E. Lawson
In Memory of Robert (Bob) Lynn Fraine, Jr
United Brotherhood of Carpenters Local #1485
In Memory of Audrey Waive Franklin
Mr. and Mrs. James W. Jones
Margaret and Roger Weideman

In Memory of George Harry Frey
Vanette and John Kashmer
In Memory of Stacy June Fristoe
Kate Crane and Sara Jessup
Susan Cress
Mr. and Mrs. Mike Hill
In Memory of Larry E. Fruchey
Mr. and Mrs. Richard Schiltz
In Memory of Frank Fuller, Jr
Ms. Linda S. Allen
In Memory of Bernice A. Garber
Sharon and Steve Walls
In Memory of Mackenzie Adilynn Geese
Becky Kizer
In Memory of Myrtice V. George
Tami Ennis
In Memory of Noel Conrad Gerber
Cecilia A. McCrillis
In Memory of Neil J. Gerschoffer
Jim Barkley
Diltz & Sons
Mr. John A. Lipp, Jr
The Marroni Family—Betty, Barb, John
Craig Parmlee
Ken Plank
Patricia J. Plank
Charlotte and Jeff Polanskey
In Memory of Beverly Jean Gessinger
Judy and Garry Bachman
Cathy and Pat Dowling
Jody Liggett, Wendra, Skip, Tara, Dale, Rodney
Betty and Pat Neesley
Mr. James Welch
In Memory of Russell D. Geyer
Mrs. Shirley Bloom
Dolores and Jerry Frese
Jeanne Geyer and Sons
Larry D. Geyer
Ruby Geyer
David Hathaway
Beverly and Larry Hough
Stephanie and Jeremy Kuskye
Jane and Larry Matz
Nancy and Larry Sumpter
Karen Taylor and Family
Territorial Engineering, LLC
In Memory of Mary Jane Gibson
Nancy and Larry Bowman
Barb Howe
In Memory of Betty J. Gilkey
Joyce Carver
Sheryl Benifiel Coffman
Mary Connolly
Mr. Jason Cronkhitte
Kelley and Mark Esch

Kathy and Bill Kane
June Keyser
Pam and Paul Macri
Marlene and Dan Mestach
Sandy Metcalf and Family
Connie Sue Randolph
Donna and Jess Rex and Family
Maryann and Mike Whiteman
Mr. and Mrs. Nicholas D. Yoder
In Memory of John (Jeff) J. Gillaspy
Robert Raymond
In Memory of Rosemary (Cookie) A. Gilpin
Neoma F. Kruk
Diane Pote
In Memory of Max L. Ginder
Ilah and Sam Hebner
In Memory of Anne Glass
Dorothy Berger
Mary Ann Derda
Dorothy Glass
Jacqueline Huber
Lia McCabe and Andy
Jean S. Scott
Mrs. Fran Staats
In Memory of Ruth Glass
Susan K. Glass
In Memory of Charles (Chuck) Joseph Goepfrich
State Farm Insurance – Tim Grauel
In Memory of Lottie Antoinette Golba
Pam and Dennis Ewald
In Memory of Carol June Gondocs
Debbie Dresser Hughes
In Memory of Nora E. Goss
Connie and Walter Crofutt
Janice and Melvin Goss
Kathryn and LeRoy Kurtz
Karla and Kim
Karen Pletcher
Kennlyn S. Robinson
Carolyn and Bill Slates
In Memory of Jack (Butch) E. Grall
Irene Grall Staley
In Memory of Don E. Grandlinard
Bill Crocker
Karen Kipfer and Mike Kipfer
Elaine and James Lawson
Judith A. Veger
In Memory of My Grandmother
Connie Tomkiewicz
In Memory of Patricia (Patty) Gravelev
Paul Adams
Mary Mahank Barnes
Barbara and Robert Bauters
Berkley Square Association, Inc.

Friends at Berkley Square
Margaret Ann and Jim Bickett
Richard Biggs
Mr. and Mrs. Timothy C. Boenne
Judy and Tom Callahan
Joseph Catanzarite
Mary Ann and Jerry Cavanah
Linda DeHahn
Joyce and Chuck Doty
Joy Evard
Yvonne Foss and Kelly Foss
Anne Fox
Ann and Jeffrey Frantz
Sherry Fulk Bringman
Margo and Larry Gerber
Laura and Bill Ipe
Esther and Jim Lambert
Mike Lambert
Ruth Lambert
Stephen G. Lambert
Jan Ludwig and Karen Siderits
Mr. and Mrs. James R. Lytle
Sue and John Merz
Ms. Janet H. Monroe
Jennifer Moritz
Kelly Newbauer
Toni Norman
Sharon and Dale Persyn
Sharon Potts
David Robledo
Chris Senff
Ginny and Bob Spencer
Mr. and Mrs. Basil Tudor
Catherine VandenBoom
Walker Parking Consultants, Inc.
Cindy and Mark Ward
Mary Lou and Mike Watson
Anne Watson
Kathryn and Matthew White
Mr. and Mrs. Edward V. Wiercioch
Shari Wilcox
Mary Ann and Tom Wozniak
In Memory of Geneva Mae Green
Martha Baker and Family
In Memory of Jon Clyde Greenlee
Mr. Glen Oberwiler
In Memory of Rosemarie (Rose) Greenlee
Terry Frantz
Carol Greenlee and Family
Mr. and Mrs. Phillip D. Greenlee
Elaine and James Lawson
Judith A. Veger
In Memory of My Grandmother
Connie Tomkiewicz
In Memory of Patricia (Patty) Gravelev
Paul Adams
Mary Mahank Barnes
Barbara and Robert Bauters
Berkley Square Association, Inc.

Vicki Higginbotham
Ms. Helen J. Kaley
Lois and Jack Lovitt
Mr. Charles V. Lynn
Joy Milliken
Mr. and Mrs. Charles M. Voreis
Donna Zachary
In Memory of Carl J. Griman
Julie Barany
In Memory of Margaret F. Griman
Julie Barany
In Memory of Henry S. Gromski
Florence Gromski
In Memory of Walter (Walt) J. Gromski
National Assoc. of Letter Carriers,
Branch 330
In Memory of Helen T. Groszek
Ms. Christina Svoboda
In Memory of Elinor Jane Growcock
Mr. and Mrs. Dick Growcock
In Memory of William J. Guilfoile
Ms. Maureen R. O'Brien
In Memory of Arthur (Art) L. Guzowski
Beryl Guzowski
In Memory of Kim S. Guzowski
Beryl Guzowski
In Memory of Florence E. Hahn
Mary M. Brown
John L. Hahn
Mr. and Mrs. George Miltenberger
Diane M. Pierce
In Memory of Marilyn J. Hall
Diane Hall
Kay Hall
In Memory of Hugh Hale Halstead
Mr. and Mrs. Phillip B. Hite
In Memory of Mary Margaret Halstead
Mr. and Mrs. Phillip B. Hite
In Memory of Rebecca Lucille Handlon
Genelle and Bob King
In Memory of Marian F. Haney
Kathryn and Martin Albright
Barbara Britton
Enedina Cruz
Debbie and Mike Dill
Exchangette Club of Michigan City
Marty Larsen
Dorothy and Gene Laughman
Mr. and Mrs. Michael Petkovich
Vivian and Vernon Roe and Family
Mrs. Burton B. Ruby and Julie O'Connor
Mrs. Sylvia VonBergen
Mr. and Mrs. Michael Welihan
Jeannie and Mahlon Wise

In Memory of Juanita (J.J.) Jean Harlan
Glenda and Donald Stanley
In Memory of Gordon T. Harrell
Ms. Kathleen A. Harrell
In Memory of Steven Robert Harridge
Somers Square East Homeowners Assoc.
In Memory of Bessie Hassett
Mr. Theodore F. Hassett
In Memory of Francis Hassett
Mr. Theodore F. Hassett
In Memory of Darlene Kay Hauger
Karen and Russ Banta
Nancy and Larry Bowman
Judy and David Combs Family
Tami DeLucenay
Sheryl and Garry Eakins
Clement Hauger, Jr
Ms. Carol S. Magee
Mrs. Nancy L. Meyers
Mr. and Mrs. Charles D. Phillips
Bev Radeline
Sally and Dave Rains
Mrs. Jane A. Spice
Traci Williams
In Memory of Carolyn Haupt
John F. Haupt
In Memory of Robert (Bob) A. Heffelfinger
Kruggel, Lawton & Company
In Memory of Edith C. Heilman
Beth A. Singleton
In Memory of Charles O. Henderson, Jr
Diane McClain-Weber
In Memory of Joan (Jo) C. Henderson
Mr. and Mrs. Nilas L. Miller
In Memory of Bonnie J. Hendricks
Theresa and Jim Whitmer
Julie and Tim Whitmer
Whitmer Farms, Inc.
In Memory of Roger Hendricks
Theresa and Jim Whitmer
Julie and Tim Whitmer
Whitmer Farms, Inc.
In Memory of Marjory (Marj) Mary Hershberger
Virginia and Louis Scott
In Memory of Robert Louis Hibiske
George Badgero
Tim Hock
In Memory of Charles W. Hill, III
Mrs. Jeannette M. Hill
In Memory of Judith (Judy) Lee Himes
Mr. Philip Foster
June Goldstein

Ms. Nancy M. Hartman
Betty Melin
Marlyn Williams
In Memory of Thomas G. Hinkle, Sr
Louis Koloszar
In Memory of Betty J. Hite
Mr. and Mrs. Phillip B. Hite
In Memory of William Maurice Hite
Mr. and Mrs. Phillip B. Hite
In Memory of Harold E. Hobbs
New Acre Nursery & Landscaping, Inc.
In Memory of Leona G. Hochstetler
Roberta Botset
Gloria Fimbianti
Bert Hochstetler
Gloria and Ron Howard and Family
Larry Lacher and Chris
Neva and Arlen Slabaugh
LuLu Belle and Bill Town
In Memory of Richard P. Hodowaniec
Jean and Jim Hill
Brenda Nierzwicki and Will Werling
Sophie and Cliff Oberg
Mary and Ken Staszewski
In Memory of Rose (Rosie) Mary Hoelting
Elfrieda Kuespert
In Memory of Kathleen (Kathy) Ann Hoffer
Sandy and Chip Stevens
In Memory of James A. Hohulin
Melba and Art Kasprzak
In Memory of Jean Phyllis Holderby
Karen and Merlin Wendling
In Memory of W. Celeste Holland
Mr. and Mrs. Anthony Magaldi
In Memory of Carl Wesley Holmgren
Tami Ennis
In Memory of Adeline C. Holvoet
Bryan Babicz
Mr. and Mrs. Lewis L. Ericson
Dr. and Mrs. Thomas Gruszynski
Friends of Adeline Holvoet
Carol and Neil Huffine
Rose Ann and Dennis Janowiak
Layla, Leann and Larry Jojo
Mrs. Shirley A. Klosinski
Muriel Patterson
Daniel Smogor
Helen E. Smogor
Kenneth Smogor
Joe Sosinski
Mrs. Irene Szalay
Rita Tarr
Carol and Dmitri Toul
Patty and Jim Waters

In Memory (continued)

In Memory of Berniece M. Hoover
Kathryn and Martin Albright
Marlene and Duwaine Baughman

In Memory of Mary Lee Horvath
Tricia and Bruce Adams
Kim and Tom Anglemire
Mrs. Karen M. Barnett
Helen and Ron Ceravolo
CM Spaces Co.
Carolyn and Lawrence Garber
The Healy Group
Ms. Karen Johnson
Mrs. DeAnna L. Kinyon
Rose and Rick Lord
Mr. and Mrs. James L. Martin
Lowell K. Martin
Anne McGraw
Bonnie and Bud Miller
Mr. and Mrs. David B. Schwind
Mr. and Mrs. Gary P. Smith
Connie Stone
Bev and Don VanHoover
Kay, Tracy and Kent Wickham

In Memory of Herman J. Horwarth
Betty and Joe Chrzan
The Daniel R. Chrzan Family
Judy Gilman
Bernice and Eldon Knepp
Louis Koloszar
Mr. and Mrs. James H. Monserez
Theresa Sparrow

In Memory of Edgar J. Housemeyer
Mrs. Joseph E. Katona, Jr

In Memory of Dianne K. Howe
Phyllis and Stephen Bendzunas
Kathy Clifford
Mr. Brad Haeck
Ms. Debbie Haeck
Barbara Holderread Family
Sandy and Paul Langfeldt
Dr. Donald W. Markley
Sandra Wallace and John Thomas
Mrs. Virginia Worman

In Memory of Ronald (Lefty) N. Howell
Sharon and John Robinson
Tangles Salon

In Memory of G. Ruth Howie
Marci Hamilton

In Memory of Jeanne Audrey Hoyer
Mrs. Karen Berebitsky
YMCA Aqua Aerobics

In Memory of Gerald (Jerry) R. Humes
Ione Humes

In Memory of Carmy L. Hurtle
Ms. Janet Gard

In Memory of Kenneth (Ken) D. Isaacs
Bettie Kimmel

In Memory of Walter (Walt) A. Jablonski
Mrs. Lillian A. Jablonski

In Memory of Edward (Poncho) J. Jachimiak, Sr
Pam and Tim Berkshire
Ms. Tina M. Phipps

In Memory of Dennis Michael Janiszewski
Cindy and Fred Scott

In Memory of Elizabeth (Betty) L. Jankowski
Mr. Frank E. Jankowski

In Memory of Robert (Jinx) E. Jankowski
Dorothy Istenes

In Memory of Evelyn C. Janowiak
Marcia and Joe Kelly

In Memory of Raymond G. Janowiak
Marcia and Joe Kelly
In Memory of Robert A. Joachim, Jr
Mr. and Mrs. Larry J. Hauguel, Sr

In Memory of Aunt Pat Johnson
Kelly G. Racek

In Memory of Grandpa Johnson
Kelly G. Racek

In Memory of Sylvia (Toots) M. Jones
Lois and Robert Freeman
Sandy Roberson
Corky and Eric Uitdenhoven

In Memory of Virgil Dean Jordan
Mr. and Mrs. Marshall A. Jacobsen

In Memory of Hattie L. Jozwiak
Brenda and Greg Aldrich
Mary Alice Pavey
Marge Pinkowski

In Memory of Deogratius Kabugo
Becky Kizer
Ms. Laura M. Lord

In Memory of Shirley Marie Kane-Brown
Mr. and Mrs. Andrew Beutter
Mrs. Kelly J. Bronstetter
Ms. Vickie A. Matafin

In Memory of Charlotte A. Karafa
1st Source Bank
Mr. and Mrs. Robert J. Baranowski, II
Annette Deguch
Mr. and Mrs. Nick Farmer
Mr. David A. Giszewski
Roseann and Dane Hamilton
Sharon and Dan Harman
Dianna Jaronik
Becky Kizer
Kruggel, Lawton & Company
Craig Lauver

Keith Lauver
Shirley and David Lauver
Renee and Don McClure
Mr. and Mrs. Alex Przybysz
Alice Toth
University of Notre Dame, College of Arts & Letters

In Memory of Frank J. Karmolinski
Ms. Nancy M. Kominkiewicz
Patti Lawson

In Memory of L. (Betty) Elizabeth Kasa
Marilynn Manning

In Memory of Larry A. Kasa
Nancy and Frank Banks
Todd Brock
Peg Kasa

In Memory of Phyllis Jean Kasprzak
Melba and Art Kasprzak

In Memory of Dorothy Anne Kelly
Marcia and Joe Kelly

In Memory of Joseph (Joe) W. Kelly, Jr
Marcia and Joe Kelly

In Memory of Judith (Judy) A. Kelly
Mary Evanoff
Kem Krest

In Memory of Pauline (Polly) Kelly
Harold D. Myers

In Memory of Joe F. Kilburn
Marylou and Robert Banker
Jan and Doug Coffman
Patc and George Dunning
Mr. and Mrs. Jack L. Freshour
Sue and Mike Freshour
Bonnie and Ron Freshour
Froggy's Ball Service – Marie and Al Kidder
Brenda and Jon Horvath
Chris and Bill Howell
Bonnie Lindsey
Linda and Jim Moen
Mr. and Mrs. Jeffrey L. Norment
Diana and Robert Sampers
Helen Sandlin
Diane Ummel

In Memory of Daniel M. Kizer
Becky Kizer

In Memory of Kerry (Kathleen) Klawitter
Mr. Andrew L. Klawitter

In Memory of Robert (Coby) Charles Klein, Sr
Mr. Thomas E. Cioch
Mr. and Mrs. Robert C. Klein, II
KW Boys
The LaCluzy Family
Emily, Alex, Kathy and Corey Noland
Pat Plencner

Derrick Smous
Christine and Al Wagnerowski
The Wagnerowski Family

In Memory of Lois H. Klotz
Mr. Thomas M. Brown
Donna and Dick Cory
Ms. Fern E. Cox

In Memory of Mary Joan Knepp
Carol Cartwright and Family
Dwight Handschu
Judy and Paul Staples

In Memory of Alice A. Koehl
Melba and Art Kasprzak

In Memory of Heinrich (Henry) Koenig, Jr
Tami Ennis

In Memory of Bruce A. Krieg
Mary Ann Grembowicz

In Memory of Florence A. Krizman
Crowe Horwath, LLP
Eleanor Krizman
Michael Nicolini
Mr. and Mrs. Jon Pilarski

In Memory of Norma F. Krol
Brenda and Greg Aldrich
Mr. and Mrs. Joseph Gorny
Carol Gromski
Louise and Jody Koselak
Karen and Mike Kurtis
Mary Ellen Maenhout and Family
Marge Pinkowski

In Memory of Doris F. Kronewitter
Carol Ervin
Phillip Harris
Nan Meek
Marilee and Dave Nowak
Gayle Strzelecki
Cookie and Don Zerfas

In Memory of John Edward Krueger
Mr. and Mrs. Alberto Verteramo

In Memory of Patricia (Pat) Y. Krueger
Mr. and Mrs. Alberto Verteramo

In Memory of Christopher James Krug
Mr. and Mrs. Gerry Bidlack

In Memory of Evelyn R. Kubasiak
SBOSC Speech

In Memory of Phyllis Kugler
Branda J. Johnson

In Memory of Beverly M. Kuntz
The Kamm Family

In Memory of Robert (Bob) S. Kwiatkowski
Ms. Judith A. Eck
FDC Graphic Films, Inc.
Mr. and Mrs. Norbert I. Gapczynski

In Memory of Sandra Kay Kytta
Sue Freitag

In Memory of Betty R. Lacher
Dennis Lamborn

In Memory of Cora Jamae Lacy
Colleen Kubacki

In Memory of Ralph Conroy Lamborn
Holly L. Irvin

In Memory of Robert C. Lawson, Sr
Mr. and Mrs. Gregory E. Lawson

In Memory of Janellen LeeVan
AT&T Telecom Pioneers South Bend
Mr. and Mrs. Robert Sellenberg

In Memory of Richard (Dick) E. Leib
Billie and Larry Millspaugh

In Memory of Harold Lemkul
Vinda and Steve Crawford
Katherine Lugar

In Memory of Mary Louise LeMon
Fern Dunning

In Memory of Charlotte E. LeRoy
Joyce and Charles DeLaruelle

In Memory of James (Jim) S. Leszczynski
Mr. and Mrs. Richard A. Stefaniak

In Memory of Shirley L. Limerick
Tami Ennis

In Memory of Eugene A. Lindorf
AdapteK Systems, Inc.

In Memory of Mary B. Lisowski
Mr. Paul C. Lisowski

In Memory of Daniel (Danny) Wesley Locke
Mr. and Mrs. James L. Frain
Anonymous
Ellen and Mark Grimsld
Mr. Joseph S. Orban
Lori and Barry Vanslager

In Memory of Clementine (Clemie) A. Locsi
Deeanne M. Locsi

In Memory of Carol Ann Longbrake
Mr. and Mrs. James D. Lingar
Pat and Walt Nowak

In Memory of Mary Lou Longcor
Mark R. Longcor
Martin D. Longcor
Michael K. Longcor
Mr. and Mrs. Richard G. Longcor

In Memory of Richard T. Loutzenhiser
Mr. and Mrs. Charles D. Losch

In Memory of Sandra (Sandy) L. Mabie
Anonymous
Beverly and Victor Brown
Ms. Vonda Horst

Mr. Daniel Mabie
Ms. Phyllis Miller
Ms. Elaine L. Sheets

In Memory of William (Bill) Cyril Maccani
Mr. and Mrs. John C. Hardham
Mr. and Mrs. Steven J. Sterling
Mr. and Mrs. Gregory W. Olson

In Memory of Loretta Kay Mackey
Clay Church Men's Group

In Memory of Joan M. Mariotti
Mr. and Mrs. Mark A. Gruwell

In Memory of Trisha Lynn Mark
Anonymous
Karen and Mike Worsham

In Memory of William (Bill) P. Mark
Marge and Walt Krumwiede

In Memory of Gerald E. Martin
Norma Antisdell
Dorothy and Bill Beecher
Deb and Rich Downs
Vera Downs
Mr. and Mrs. Robert J. Eilers
Lee and Dennie Fugate
Mrs. Janet Gesell
Deb and Rick Hamming
Mr. and Mrs. Larry F. Klonowski
Norma and Roger Milzarek
Gordon Nagel and Trink
Wincie and Kevin Nagel
Connie and Scott Nagel
Sheila Quirk
Kim Sammelman
Ladora and Roger Sloan
Jackie and Herman Smith
Mr. and Mrs. Jerome P. Torzewski, II
Ramona Ustian

In Memory of Nancy Ann Martin
Mrs. Elizabeth Ardman
Mrs. Mary Huber
Mr. Tony E. Morrison
Ms. LaVerne Zahnow

In Memory of Willadene McFarland
Mrs. Ginger Paczesny

In Memory of Robert F. McGinty
Mrs. Kathryn Cooper
Ms. Noreen L. Krakora
Mr. Edward J. Smith
Ms. Barbara Wiegand

In Memory of Susan Reed McGonigal
Chelsea R. McGonigal

In Memory of Patricia M. McGowen
MaryLou Botich
Laura Cleary
Sandra Martinez
Cindy Nugent

In Memory of Robert (Bob) E. McKinley
Ms. Debra Lendman

In Memory of Mary Jane McMahon
Anne and Charlie Gruenig

In Memory of Carl R. McMillin
Sam Edging
Betty Kay Eley
Rhonda and Jim Ferguson
Linda and Charles Hissong
Peggy and Ron Smith

In Memory of Edward (Ed) James McNamara, Jr
Mary and Mark Heller
Jane Mittleman
MSRA, Inc.
Harriett and Michael Wolf

In Memory of Terry Meland
Sharon and Doug Cooper
Pat Rubio
Julie and Mark Westbrook

In Memory of Terry Menefee
Tami Ennis

In Memory of Flora Mae Metzger
Mr. and Mrs. Robert Mathis

In Memory of Ruthie G. Michael
IUPUI Parking & Transportation Services

In Memory of Lou Ann Miles
George Bennett
Karen and Bob Constable
Ida Mae Gingerich
Deb and Andy Johnson
Marlene and Paul Pollock
Betty Stewart
Julie Troup
Wendy and Paul Yuhasz

In Memory of Barry L. Miller
Mrs. Barbara A. Miller

In Memory of Bernice L. Miller
Karen and Dale Roberts

In Memory of John E. Miller
Wanda Miller

In Memory of L. B. Miller
Joan Skinner

In Memory of William D. Minear
Mrs. Tami K. Martinez

In Memory of Carol Jane Minix
Mrs. Velma G. Epler

In Memory of Agnes V. Monhaut
Alice Hartman
Mrs. Kandy M. Riscen
St. Joe Valley Chapter of the Indiana Football Hall of Fame

In Memory of James (Jim) Louis Moore
Mr. and Mrs. Wayne Ambrose
Linda and Dale Feece

Mr. and Mrs. Craig Garvey
Grace United Methodist, Serendipity Class
Carol Grimm

Judy and Pete Jank
Mr. and Mrs. Jack Lundorf
Stacey and Terry Rodino
Janet and Denny Templeton
Bobbie and Will Wilson
Dorothy Zimmerman and Family

In Memory of Mildred (Millie) M. Moore
Tami Ennis

In Memory of Belinda J. Leonard Morris
Sally G. Leonard

In Memory of Brandon Mowery
Carmen Mowery

In Memory of Marshall Murray
Mr. Mark M Murray

In Memory of Martha N. Murray
Mr. Mark M Murray

In Memory of Marcy Myers
Barb and Charlie Sauter

In Memory of A. Shari Myszak
Somers Square East Homeowners Assoc.

In Memory of John Paul Nagy
Irene Szucs

In Memory of Robert (Bob) R. Natharius
Sharon and David Biek
Ruth and Ed Farmer
Nancy Filley
Jean and Gary Frank
Linda and Tony Hums
Monica and Thomas Nimtz
Lori Schur and Julie Smith
Amy and Doug Wagoner

In Memory of Jacquelyn (Jacki) Marie Neely
Sherry and Mike Borkowski
Marie and Paul Brady
Sharon Breen
Carol and Don Burling
Norma and William Diedrich
Norm Dolak and Barb Dolak
Norma and William Hurt
Dick Janicki
Ann and Dave Jones
Esther and Ed Ksiezopolski
Sondra and Tom Nash
Liz and Randy Noland
Stephanie Maher Phillips
Mr. and Mrs. Charles D. Schoffner
Mr. and Mrs. Joseph Speybroeck
Sherry and Bob Stachowiak
State Farm Insurance – Tim Grauel
State Farm Insurance – Kathy and Jim Nobles
Cherie and Steve TeRoller
Corky and Eric Uitdenhoven
Barb Zimmerman

In Memory of Raymond (Brisk) Neidlinger
Mr. Douglas E. Snyder

In Memory of Nancy L. Neitch
Anonymous
Mary, Steve and Joe Bencsics
Ms. Deborah Bonner
Mr. and Mrs. Michael B. Brien
Elizabeth E. Dirst
Mr. and Mrs. Virgil Felhauer
Chris and Tom Keres
Shelley and Jason Lietz
Shirley and Jack Mesaros
Ms. Jean Mills
Shelly and Carl Myers
Sharon and Bill Schlarb
Mrs. Anna M. Slomski

In Memory of Jerry E. Nelson
Somers Square East Homeowners Assoc.

In Memory of Margaret (Marge) T. Nelson
Nita and Tom Baranowski
Susan M. Miller, CPA
Nancy Sulok
Melanie and Victor Sulok
Mrs. Rose Zmyslo

In Memory of Richard (Dick) R. Nelson
Nancy Sulok

In Memory of Evelyn (Guppie) Irene Nicholas
Ms. Elinor M. Sharp

In Memory of Elizabeth (Betty) Ann Nickel
Donna and Jerry Ross

In Memory of Michele L. Niedbalski
Mr. and Mrs. Marshal Glen Akin
Becky Kizer

In Memory of William (Bill) D. Niedbalski
Loanna and Dick Rockstroh

In Memory of Judith (Judy) Ellen Niespodziany
Becky Kizer
Dr. and Mrs. Jeffrey L. Niespodziany
Marylyn Oppenheim and Family

In Memory of Phillip (Phil) L. Nusbaum
Lori and Tim Anderson
Nancy and Richard Birk
Mary and Elmer Blanton
The Veta Blosser Family
DFA Family
Tracey and Chris Fries
Cheryl and Andy Gall
Bob Gehke
Karen Kidder
Becky Kizer
Al Mast
Beth and Don Muhnlickel
Gloria and Gene Neff
Vanessa and Randy Steffen

Jan and Rog Stoner
Mr. Jerry L. Stutzman
Laura Stutzman
The Donald Truex Family
Mildred and Lowell Truex
Dan L. Williams
Annette Wisler
Diane and Tony Yoder
Laura and Bob Zell

In Memory of Frances M. Oakes
Donald E. Oakes

In Memory of Elizabeth (Betty) Dolores O'Brien
Mr. and Mrs. Brian M. Boulac
Laura Chipman
Emily and Paul Conway
Ms. Karen R. Curtis Miller
The Ell Family
Patrick Novitzki
Mr. and Mrs. Robert Soderberg
Mr. and Mrs. Kenneth J. Troyer
Tuesley Hall Konopa, LLP
University of Notre Dame

In Memory of Marguerite L. O'Connor
Mary Ann and Scott Horner

In Memory of Marilyn J. O'Daniel
Jacqueline Huber

In Memory of John D. Oden
Jean and Steve Lynn
Karen and Mike Worsham

In Memory of Myron Duane Oesch
Edd's Supplies, Inc.
Hoogenboom Nofziger Corp.
Ms. Patricia R. Kelly
Mennonite Mutual Aid
Faye Oesch
Laura and Bob Zell

In Memory of Richard (Dick) D. Olds
Karen and Pete Awald
Jackie and Jerry Clase
Linda and Charles Hissong
Gloria and Chuck Krieg
Life Plex Rehabilitation, Breathless Group
Linda and Carl Lowry
Vicki and Gary Maybee
Ms. Brenda J. Nierzwicki
Barbara and John Pittman

In Memory of Warren Calvin O'Neal, Jr
Judy and Don Ruszkowski

In Memory of Lyle E. Osborne
Rosemary M. Ames
Ms. Janene Bishop
Marjorie Fisher
Patricia Murray
Joyce and Don Notary
Mr. and Mrs. Thomas J. Nowicki
John Swantz
Ann Ullman

In Memory (continued)

In Memory of Joyce J. Palmero
Brenda and Lloyd Hunsberger

In Memory of Jill Patterson
Becky Kizer

In Memory of Jeremiah Pauff
Tami Ennis

In Memory of Joseph Allen Payne
Jean and Rich Grontkowski

In Memory of Donald (Don) Payton
Mr. Eric Payton

In Memory of Patricia Petrush
Sondra and Tom Nash

In Memory of Jennifer Lynn Phipps
Mrs. Barbara Phipps

In Memory of Willard (Bill) M. Phipps
Mrs. Barbara Phipps

In Memory of LaVon Ping
Mr. and Mrs. Phillip B. Hite

In Memory of Mari Louise Plain
Mary and Bob Armour
Stephanie and John Ballard
Jeanne and Dave Bill
Colleen and Dave Fox
Ruth Ann and Greg Gibson
The Harrison Family
Betsy and Randy Heinmiller
Mrs. Anne M. Hillman
The Kamm Family
Elizabeth and Les Lamon
Peg Larson
Dawn and Larry Lewis
Tad Scott Lovan, DDS
Mr. and Mrs. William Page
Marianne and Thom Raddick
Denise Roemer
Kim and Chris Schorr
Ms. Maureen M. Sheehy
Erin Tenney
The Wednesday Club
Mary Weinzettl
Janice Nelson Weller
Ms. Juli Young

In Memory of Marion (Mary Ann) June Plummer
Lakeville American Legion Auxiliary Post 363

In Memory of Frank T. Polack
Sue and Chris Coughlin
Sandy and Nick DeCicco
Joseph G. Kazmierczak
Mr. and Mrs. Andrew F. Kazmierzak
Kathy and Al Large
Barbara and Harold Miller
Mishawaka Water Department
Alan Plencner

In Memory of Troy Steven Porzellius
Connie Neely

In Memory of Laurence Lancaster Powell
Sedgwick House Neighbors and Staff

In Memory of Dorothy L. Powers
1st Source Bank, Personal Asset Management Group

Theresa and Marty Books
Delta Kappa Gamma Soc Intl Tau Chapter
Robert E. Dunbar, Sr
Jan Greenlee

Barb and Dan Johnston
Arlene and Dean Lanier
Mr. and Mrs. Tanner Leibovitz
Denise Roemer
Mr. Jerome Simon

In Memory of David R. Prentkowski
Wanda Prentkowski

In Memory of Richard T. Pullen
Becky Kizer

In Memory of Adell Cecilia Radecki
May Creek Farm, Inc.

In Memory of Deborah D. Radecki
Dr. and Mrs. Thomas Gruszynski

In Memory of Dennis G. Radican, Sr
Angela Radican

In Memory of Sharon A. Ransom
Anonymous
Norma Lundquist

In Memory of Frederick W. Rapp, Jr
Jane Rapp

In Memory of JoAnne Roe L. Rapuano
Ms. Barbara R. Price

In Memory of Connie Eve Ray
Anonymous
Mr. and Mrs. Bill Burger
Ann and David Carr
Samantha Dankert
Sandra DeMeyer
Cindy and Barry Grife
Anne and Robert James
Leta Janisch
Bonnie and Chet Jedral
Mr. Frank Kloski
Kay Kuhl

Karen and Phil Miller
Jan and Ron Nicodemus
Carol and Robert Ray
Donna L. Redding
Dawn and Richard Reiner
Evan, Landon, Jessica and Lee Stevens
Sunset House – Melinda and Gary Firestone
Voices of Praise
The Yeager Family

In Memory of Barbara M. Reed
Anonymous

Mr. and Mrs. E. R. Bass
Cindy Bodle
Frances Buysse
The D. D. Reckner Co.
Jayne and John Dregits
Jean Gleissner
Catherine Groody
Rev. Daniel G. Groody
Mr. and Mrs. Robert Gross
Hawley Insurance
Arlene and Don Hudgens
Marie Kieszkowski
Brenda King
Korhorn Financial Group, Inc..
Ms. Kathleen Marshall
Deb and Bob Martin
Elaine and Wyatt Mick
National Christian Foundation Alabama
Laura and Phil Seng
Mr. and Mrs. Mark L. Wallace
Susan Hess Wood

In Memory of Jassie Bell Reed
Ms. Linda S. Allen

In Memory of Robert P. Reese
Mary and Elmer Blanton

In Memory of Darlene M. Reigh
Mr. and Mrs. William Sullivan

In Memory of David J. Reigh
Mr. and Mrs. William Sullivan

In Memory of Rex A. Rife
Mr. and Mrs. Jim Edmundson

In Memory of JoAnne Roe
Grace and Albert Nyerges
Chris Verkler

In Memory of Margaret E. Sappington
Marlene and Gene Kaczynski
Lorraine Lips

In Memory of Margaret C. Schafer
Construction Workers on the Campus
Crossroads Project at University of Notre Dame Stadium

In Memory of David (Dave) B. Schenk
Mrs. Leona M. Schenk

In Memory of Frank J. Schimizzi
Becky Kizer

In Memory of Gail Fern Schlemmer
Wanda Miller

In Memory of Marvin R. Schrock
Lester Berger

In Memory of Miriam E. Shearer
Pat Feehly

In Memory of Willard Agee Shelor
Patricia J. Plank

In Memory of Harold (Doc) L. Shelton, Jr
LaPorte Seamlas Gutter, LLC

In Memory of Margaret (Peggy) Schwark
Daniel Sosnoski

In Memory of Dana Rowe
Will Garnitz

In Memory of Michael G. Rudolph
Michelle Lekarczyk
Erica Plotner

In Memory of Imogene Rupel
Mr. Keith E. Rupel

In Memory of Kenneth (Ken) J. Ruppert
Mr. and Mrs. Jay A. Danner
Shari Pullen
Stephen Reese

In Memory of Ben (Benny) B. Russo
Carole Russo

In Memory of Evelyn M. Ruszkowski
Judy and Don Ruszkowski
Mr. Richard S. Ruszkowski

In Memory of George J. Sailor
Mr. and Mrs. Leonard R. Sailor

In Memory of Susan (Sue) Marie Sailor
Anonymous
Anna and Tom Barber
Ms. Katherine B. Casey
Mark and Rosemary Corpe
Sheila Dibley
Pam Hansing
Kathy and John Lucchese
Arlene and Leonard Lucchese
Mary Lucchese
Julie and Joe Manfredi
Mr. and Mrs. George L. Meyer
Toni Minichillo
Sue and Bob Nichols
Letty and Joe Probst
Debra Sailor
Therese Sailor
Linda L. Unger

In Memory of Margaret E. Sappington
Marlene and Gene Kaczynski
Lorraine Lips

In Memory of Margaret C. Schafer
Construction Workers on the Campus
Crossroads Project at University of Notre Dame Stadium

In Memory of David (Dave) B. Schenk
Mrs. Leona M. Schenk

In Memory of Frank J. Schimizzi
Becky Kizer

In Memory of Gail Fern Schlemmer
Wanda Miller

In Memory of Marvin R. Schrock
Lester Berger

In Memory of Miriam E. Shearer
Pat Feehly

In Memory of Willard Agee Shelor
Patricia J. Plank

In Memory of Harold (Doc) L. Shelton, Jr
LaPorte Seamlas Gutter, LLC

In Memory of Margaret (Peggy) Schwark
Daniel Sosnoski

In Memory of Irene A. Schymanski
Mr. John Schymanski

In Memory of Ernest E. Scott, Sr
Mr. Christopher J. Darr
Annette and Steve Loeffler

In Memory of Robert W. Screes
Marilyn and Don Dennig

In Memory of Bonnie Jo Seese
Amy Seese

In Memory of Renate H. Senne
Mr. and Mrs. Byron M. Brady
Mrs. Terri L. Norman
Linda L. Unger
Paulette and Allan Young

In Memory of Lou (Jan) Jeanice Shaffer
Jean and Jim Hill

In Memory of Vivian Joan Shannon
AT&T Telecom Pioneers South Bend

In Memory of Paul E. Shaum
Liz and Randy Noland

In Memory of Dennis P. Shaw
Ms. Dolores Ciesielski
Terry and Jim Cinal
Renee and John Dowd
Mr. and Mrs. David L. Hoffman
Mr. and Mrs. Raymond Kuczmanski
Katherine Lodyga
Theresa Lodyga
Barbara Matuszak
Virginia Mell
Mr. and Mrs. Daniel S. Niedbalski
Mr. and Mrs. James E. Niemasik
Ms. Annette M. Romans
Mr. and Mrs. Theodore F. Salwin
Mr. and Mrs. John T. Sergeant
Mrs. Linda A. Shaw
Mr. and Mrs. Ronald R. Tafelski
Mrs. Nancy E. Takach
Helen Wituski

In Memory of George T. Shead
Mr. and Mrs. James W. Barnes
Sharon and Matt Edmonds
Mr. Matthew Gursky
Nancy and James Hannon
Malanie and Michael Jennings
Mr. and Mrs. Michael A. Joines
Kimberly and Mark Knowlton
Sue and Dan Shead
Mr. and Mrs. Mark P. Veldman
Mr. and Mrs. Thomas F. Veldman

In Memory of George T. Shead
Mr. and Mrs. James W. Barnes
Sharon and Matt Edmonds
Mr. Matthew Gursky
Nancy and James Hannon
Malanie and Michael Jennings
Mr. and Mrs. Michael A. Joines
Kimberly and Mark Knowlton
Sue and Dan Shead
Mr. and Mrs. Mark P. Veldman
Mr. and Mrs. Thomas F. Veldman

In Memory of George T. Shead
Mr. and Mrs. James W. Barnes
Sharon and Matt Edmonds
Mr. Matthew Gursky
Nancy and James Hannon
Malanie and Michael Jennings
Mr. and Mrs. Michael A. Joines
Kimberly and Mark Knowlton
Sue and Dan Shead
Mr. and Mrs. Mark P. Veldman
Mr. and Mrs. Thomas F. Veldman

In Memory of George T. Shead
Mr. and Mrs. James W. Barnes
Sharon and Matt Edmonds
Mr. Matthew Gursky
Nancy and James Hannon
Malanie and Michael Jennings
Mr. and Mrs. Michael A. Joines
Kimberly and Mark Knowlton
Sue and Dan Shead
Mr. and Mrs. Mark P. Veldman
Mr. and Mrs. Thomas F. Veldman

In Memory of George T. Shead
Mr. and Mrs. James W. Barnes
Sharon and Matt Edmonds
Mr. Matthew Gursky
Nancy and James Hannon
Malanie and Michael Jennings
Mr. and Mrs. Michael A. Joines
Kimberly and Mark Knowlton
Sue and Dan Shead
Mr. and Mrs. Mark P. Veldman
Mr. and Mrs. Thomas F. Veldman

In Memory of George T. Shead
Mr. and Mrs. James W. Barnes
Sharon and Matt Edmonds
Mr. Matthew Gursky
Nancy and James Hannon
Malanie and Michael Jennings
Mr. and Mrs. Michael A. Joines
Kimberly and Mark Knowlton
Sue and Dan Shead
Mr. and Mrs. Mark P. Veldman
Mr. and Mrs. Thomas F. Veldman

In Memory of George T. Shead
Mr. and Mrs. James W. Barnes
Sharon and Matt Edmonds
Mr. Matthew Gursky
Nancy and James Hannon
Malanie and Michael Jennings
Mr. and Mrs. Michael A. Joines
Kimberly and Mark Knowlton
Sue and Dan Shead
Mr. and Mrs. Mark P. Veldman
Mr. and Mrs. Thomas F. Veldman

In Memory of George T. Shead
Mr. and Mrs. James W. Barnes
Sharon and Matt Edmonds
Mr. Matthew Gursky
Nancy and James Hannon
Malanie and Michael Jennings
Mr. and Mrs. Michael A. Joines
Kimberly and Mark Knowlton
Sue and Dan Shead
Mr. and Mrs. Mark P. Veldman
Mr. and Mrs. Thomas F. Veldman

In Memory of George T. Shead
Mr. and Mrs. James W. Barnes
Sharon and Matt Edmonds
Mr. Matthew Gursky
Nancy and James Hannon
Malanie and Michael Jennings
Mr. and Mrs. Michael A. Joines
Kimberly and Mark Knowlton
Sue and Dan Shead
Mr. and Mrs. Mark P. Veldman
Mr. and Mrs. Thomas F. Veldman

In Memory of George T. Shead
Mr. and Mrs. James W. Barnes
Sharon and Matt Edmonds
Mr. Matthew Gursky
Nancy and James Hannon
Malanie and Michael Jennings
Mr. and Mrs. Michael A. Joines
Kimberly and Mark Knowlton
Sue and Dan Shead
Mr. and Mrs. Mark P. Veldman
Mr. and Mrs. Thomas F. Veldman

In Memory of George T. Shead
Mr. and Mrs. James W. Barnes
Sharon and Matt Edmonds
Mr. Matthew Gursky
Nancy and James Hannon
Malanie and Michael Jennings
Mr. and Mrs. Michael A. Joines
Kimberly and Mark Knowlton
Sue and Dan Shead
Mr. and Mrs. Mark P. Veldman
Mr. and Mrs. Thomas F. Veldman

In Memory of George T. Shead
Mr. and Mrs. James W. Barnes
Sharon and Matt Edmonds
Mr. Matthew Gursky
Nancy and James Hannon
Malanie and Michael Jennings
Mr. and Mrs. Michael A. Joines
Kimberly and Mark Knowlton
Sue and Dan Shead
Mr. and Mrs. Mark P. Veldman
Mr. and Mrs. Thomas F. Veldman

In Memory of George T. Shead
Mr. and Mrs. James W. Barnes
Sharon and Matt Edmonds
Mr. Matthew Gursky
Nancy and James Hannon
Malanie and Michael Jennings
Mr. and Mrs. Michael A. Joines
Kimberly and Mark Knowlton
Sue and Dan Shead
Mr. and Mrs. Mark P. Veldman
Mr. and Mrs. Thomas F. Veldman

In Memory of George T. Shead
Mr. and Mrs. James W. Barnes
Sharon and Matt Edmonds
Mr. Matthew Gursky
Nancy and James Hannon
Malanie and Michael Jennings
Mr. and Mrs. Michael A. Joines
Kimberly and Mark Knowlton
Sue and Dan Shead
Mr. and Mrs. Mark P. Veldman
Mr. and Mrs. Thomas F. Veldman

In Memory of James (Jim) A. Shimp
Pam and John Billey
Mr. and Mrs. Dennis W. Collier
Ms. Louise M. Rickey

In Memory of Jane Elizabeth Shimp
Mr. and Mrs. Gregory J. Bahrey
Pam and John Billey
Laura and Wilson Brinley
Mr. and Mrs. Dennis W. Collier
Mr. and Mrs. Geoffrey Collier
Marilyn and Don Eberhardt
Mr. William M. Gorbitz
Mr. and Mrs. Charles Graack
Dolores Hawkins
Ms. Joyce Jannasch
Ms. Louise M. Rickey
Pat Santa
Mrs. Bonnie J. Switalski
Mr. and Mrs. Ray F. VanPatten
Louisa Wallick
Suzanne and George Walters
Mr. and Mrs. Larry D. Yoder

In Memory of William (Bill) Roy Shoufler
Becky Kizer

In Memory of Sarah (Sally) Shriner
Mr. and Mrs. Ray Aldrich
Mr. Kyle Chamberlin
Connie and Steve Clauson
Ms. Megan Darcy
Danielle and Eric DiSilvestro
Karen and Larry Donovan
Pam and Tom Driscoll
Julie and Jack Gollings
Jane Anne Hanes
Jade M. Kayser
Ruth Ann and Dan Lattimer
Mrs. Ashleigh Mills
Karen and Larry Mowery
Sue Noonan
Tara and Fred Snyder
Maryann and Jim Snyder
Travis Stoutenborough
Mr. and Mrs. Peter D. Trone
Diane Watson
Mary Lou and Mike Watson
Mary and Dave Weber
The Wiley Family

In Memory of Sarah (Sally) Shriner
Mr. and Mrs. Ray Aldrich
Mr. Kyle Chamberlin
Connie and Steve Clauson
Ms. Megan Darcy
Danielle and Eric DiSilvestro
Karen and Larry Donovan
Pam and Tom Driscoll
Julie and Jack Gollings
Jane Anne Hanes
Jade M. Kayser
Ruth Ann and Dan Lattimer
Mrs. Ashleigh Mills
Karen and Larry Mowery
Sue Noonan
Tara and Fred Snyder
Maryann and Jim Snyder
Travis Stoutenborough
Mr. and Mrs. Peter D. Trone
Diane Watson
Mary Lou and Mike Watson
Mary and Dave Weber
The Wiley Family

In Memory of Sarah (Sally) Shriner
Mr. and Mrs. Ray Aldrich
Mr. Kyle Chamberlin
Connie and Steve Clauson
Ms. Megan Darcy
Danielle and Eric DiSilvestro
Karen and Larry Donovan
Pam and Tom Driscoll
Julie and Jack Gollings
Jane Anne Hanes
Jade M. Kayser
Ruth Ann and Dan Lattimer
Mrs. Ashleigh Mills
Karen and Larry Mowery
Sue Noonan
Tara and Fred Snyder
Maryann and Jim Snyder
Travis Stoutenborough
Mr. and Mrs. Peter D. Trone
Diane Watson
Mary Lou and Mike Watson
Mary and Dave Weber
The Wiley Family

In Memory of Sarah (Sally) Shriner
Mr. and Mrs. Ray Aldrich
Mr. Kyle Chamberlin
Connie and Steve Clauson
Ms. Megan Darcy
Danielle and Eric DiSilvestro
Karen and Larry Donovan
Pam and Tom Driscoll
Julie and Jack Gollings
Jane Anne Hanes
Jade M. Kayser
Ruth Ann and Dan Lattimer
Mrs. Ashleigh Mills
Karen and Larry Mowery
Sue Noonan
Tara and Fred Snyder
Maryann and Jim Snyder
Travis Stoutenborough
Mr. and Mrs. Peter D. Trone
Diane Watson
Mary Lou and Mike Watson
Mary and Dave Weber
The Wiley Family

In Memory of Sarah (Sally) Shriner
Mr. and Mrs. Ray Aldrich
Mr. Kyle Chamberlin
Connie and Steve Clauson
Ms. Megan Darcy
Danielle and Eric DiSilvestro
Karen and Larry Donovan
Pam and Tom Driscoll
Julie and Jack Gollings
Jane Anne Hanes
Jade M. Kayser
Ruth Ann and Dan Lattimer
Mrs. Ashleigh Mills
Karen and Larry Mowery
Sue Noonan
Tara and Fred Snyder
Maryann and Jim Snyder
Travis Stoutenborough
Mr. and Mrs. Peter D. Trone
Diane Watson
Mary Lou and Mike Watson
Mary and Dave Weber
The Wiley Family

In Memory of Sarah (Sally) Shriner
Mr. and Mrs. Ray Aldrich
Mr. Kyle Chamberlin
Connie and Steve Clauson
Ms. Megan Darcy
Danielle and Eric DiSilvestro
Karen and Larry Donovan
Pam and Tom Driscoll
Julie and Jack Gollings
Jane Anne Hanes
Jade M. Kayser
Ruth Ann and Dan Lattimer
Mrs. Ashleigh Mills
Karen and Larry Mowery
Sue Noonan
Tara and Fred Snyder
Maryann and Jim Snyder
Travis Stoutenborough
Mr. and Mrs. Peter D. Trone
Diane Watson
Mary Lou and Mike Watson
Mary and Dave Weber
The Wiley Family

In Memory of Sarah (Sally) Shriner
Mr. and Mrs. Ray Aldrich
Mr. Kyle Chamberlin
Connie and Steve Clauson
Ms. Megan Darcy
Danielle and Eric DiSilvestro
Karen and Larry Donovan
Pam and Tom Driscoll
Julie and Jack Gollings
Jane Anne Hanes
Jade M. Kayser
Ruth Ann and Dan Lattimer
Mrs. Ashleigh Mills
Karen and Larry Mowery
Sue Noonan
Tara and Fred Snyder
Maryann and Jim Snyder
Travis Stoutenborough
Mr. and Mrs. Peter D. Trone
Diane Watson
Mary Lou and Mike Watson
Mary and Dave Weber
The Wiley Family

In Memory of Sarah (Sally) Shriner
Mr. and Mrs. Ray Aldrich
Mr. Kyle Chamberlin
Connie and Steve Clauson
Ms. Megan Darcy
Danielle and Eric DiSilvestro
Karen and Larry Donovan
Pam and Tom Driscoll
Julie and Jack Gollings
Jane Anne Hanes
Jade M. Kayser
Ruth Ann and Dan Lattimer
Mrs. Ashleigh Mills
Karen and Larry Mowery
Sue Noonan
Tara and Fred Snyder
Maryann and Jim Snyder
Travis Stoutenborough
Mr. and Mrs. Peter D. Trone
Diane Watson
Mary Lou and Mike Watson
Mary and Dave Weber
The Wiley Family

In Memory of Sarah (Sally) Shriner
Mr. and Mrs. Ray Aldrich
Mr. Kyle Chamberlin
Connie and Steve Clauson
Ms. Megan Darcy
Danielle and Eric DiSilvestro
Karen and Larry Donovan
Pam and Tom Driscoll
Julie and Jack Gollings
Jane Anne Hanes
Jade M. Kayser
Ruth Ann and Dan Lattimer
Mrs. Ashleigh Mills
Karen and Larry Mowery
Sue Noonan
Tara and Fred Snyder
Maryann and Jim Snyder
Travis Stoutenborough
Mr. and Mrs. Peter D. Trone
Diane Watson
Mary Lou and Mike Watson
Mary and Dave Weber
The Wiley Family

In Memory of Sarah (Sally) Shriner
Mr. and Mrs. Ray Aldrich
Mr. Kyle Chamberlin
Connie and Steve Clauson
Ms. Megan Darcy
Danielle and Eric DiSilvestro
Karen and Larry Donovan
Pam and Tom Driscoll
Julie and Jack Gollings
Jane Anne Hanes
Jade M. Kayser
Ruth Ann and Dan Lattimer
Mrs. Ashleigh Mills
Karen and Larry Mowery
Sue Noonan
Tara and Fred Snyder
Maryann and Jim Snyder
Travis Stoutenborough
Mr. and Mrs. Peter D. Trone
Diane Watson
Mary Lou and Mike Watson
Mary and Dave Weber
The Wiley Family

In Memory of Sarah (Sally) Shriner
Mr. and Mrs. Ray Aldrich
Mr. Kyle Chamberlin
Connie and Steve Clauson
Ms. Megan Darcy
Danielle and Eric DiSilvestro
Karen and Larry Donovan
Pam and Tom Driscoll
Julie and Jack Gollings
Jane Anne Hanes
Jade M. Kayser
Ruth Ann and Dan Lattimer
Mrs. Ashleigh Mills
Karen and Larry Mowery
Sue Noonan
Tara and Fred Snyder
Maryann and Jim Snyder
Travis Stoutenborough
Mr. and Mrs. Peter D. Trone
Diane Watson
Mary Lou and Mike Watson
Mary and Dave Weber
The Wiley Family

In Memory of Sarah (Sally) Shriner
Mr. and Mrs. Ray Aldrich
Mr. Kyle Chamberlin
Connie and Steve Clauson
Ms. Megan Darcy
Danielle and Eric DiSilvestro
Karen and Larry Donovan
Pam and Tom Driscoll
Julie and Jack Gollings
Jane Anne Hanes
Jade M. Kayser
Ruth Ann and Dan Lattimer
Mrs. Ashleigh Mills
Karen and Larry Mowery
Sue Noonan
Tara and Fred Snyder
Maryann and Jim Snyder
Travis Stoutenborough
Mr. and Mrs. Peter D. Trone
Diane Watson
Mary Lou and Mike Watson
Mary and Dave Weber
The Wiley Family

In Memory of Sarah (Sally) Shriner
Mr. and Mrs. Ray Aldrich
Mr. Kyle Chamberlin
Connie and Steve Clauson
Ms. Megan Darcy
Danielle and Eric DiSilvestro
Karen and Larry Donovan
Pam and Tom Driscoll
Julie and Jack Gollings
Jane Anne Hanes
Jade M. Kayser
Ruth Ann and Dan Lattimer
Mrs. Ashleigh Mills
Karen and Larry Mowery
Sue Noonan
Tara and Fred Snyder
Maryann and Jim Snyder
Travis Stoutenborough
Mr. and Mrs. Peter D. Trone
Diane Watson
Mary Lou and Mike Watson
Mary and Dave Weber
The Wiley Family

In Memory of Sarah (Sally) Shriner
Mr. and Mrs. Ray Aldrich
Mr. Kyle Chamberlin
Connie and Steve Clauson
Ms. Megan Darcy
Danielle and Eric DiSilvestro
Karen and Larry Donovan
Pam and Tom Driscoll
Julie and Jack Gollings
Jane Anne Hanes
Jade M. Kayser
Ruth Ann and Dan Lattimer
Mrs. Ashleigh Mills
Karen and Larry Mowery
Sue Noonan
Tara and Fred Snyder
Maryann and Jim Snyder
Travis Stoutenborough
Mr. and Mrs. Peter D. Trone
Diane Watson
Mary Lou and Mike Watson
Mary and Dave Weber
The Wiley Family

In Memory of Sarah (Sally) Shriner
Mr. and Mrs. Ray Aldrich
Mr. Kyle Chamberlin
Connie and Steve Clauson
Ms. Megan Darcy
Danielle and Eric DiSilvestro
Karen and Larry Donovan
Pam and Tom Driscoll
Julie and Jack Gollings
Jane Anne Hanes
Jade M. Kayser
Ruth Ann and Dan Lattimer
Mrs. Ashleigh Mills
Karen and Larry Mowery
Sue Noonan
Tara and Fred Snyder
Maryann and Jim Snyder
Travis Stoutenborough
Mr. and Mrs. Peter D. Trone
Diane Watson
Mary Lou and Mike Watson
Mary and Dave Weber
The Wiley Family

In Memory of Sarah (Sally) Shriner
Mr. and Mrs. Ray Aldrich
Mr. Kyle Chamberlin
Connie and Steve Clauson
Ms. Megan Darcy
Danielle and Eric DiSilvestro
Karen and Larry Donovan
Pam and Tom Driscoll
Julie and Jack Gollings
Jane Anne Hanes
Jade M. Kayser
Ruth Ann and Dan Lattimer
Mrs. Ashleigh Mills
Karen and Larry Mowery
Sue Noonan
Tara and Fred Snyder
Maryann and Jim Snyder
Travis Stoutenborough
Mr. and Mrs. Peter D. Trone
Diane Watson
Mary Lou and Mike Watson
Mary and Dave Weber
The Wiley Family

In Memory of Sarah (Sally) Shriner
Mr. and Mrs. Ray Aldrich
Mr. Kyle Chamberlin
Connie and Steve Clauson
Ms. Megan Darcy
Danielle and Eric DiSilvestro
Karen and Larry Donovan
Pam and Tom Driscoll
Julie and Jack Gollings
Jane Anne Hanes
Jade M. Kayser
Ruth Ann and Dan Lattimer
Mrs. Ashleigh Mills
Karen and Larry Mowery
Sue Noonan
Tara and Fred Snyder
Maryann and Jim Snyder
Travis Stoutenborough
Mr. and Mrs. Peter D. Trone
Diane Watson
Mary Lou and Mike Watson
Mary and Dave Weber
The Wiley Family

In Memory of Sarah (Sally) Shriner
Mr. and Mrs. Ray Aldrich
Mr. Kyle Chamberlin
Connie and Steve Clauson
Ms. Megan Darcy
Danielle and Eric DiSilvestro
Karen and Larry Donovan
Pam and Tom Driscoll
Julie and Jack Gollings
Jane Anne Hanes
Jade M. Kayser
Ruth Ann and Dan Lattimer
Mrs. Ashleigh Mills
Karen and Larry Mowery
Sue Noonan
Tara and Fred Snyder
Maryann and Jim Snyder
Travis Stoutenborough
Mr. and Mrs. Peter D. Trone
Diane Watson
Mary Lou and Mike Watson
Mary and Dave Weber
The Wiley Family

Mr. and Mrs. Gary Mann
The Markel Family
Kim McKibbin
Pfister Promotions – Karen and David Pfister
Karry and Ken Quarandillo
Ms. Sandra A. Shultz
Judy and John Szobody
Rosemarie Terlep
Todd Realty, Inc.
John Wiswell
Paulette and Allan Young

In Memory of Hugh W. Silberman
Mr. and Mrs. Thomas F. Hudak

In Memory of Joseph Simko
Mr. Michael Simko

In Memory of Marjorie (Marge) Ruth Simpson
Lu Ann and Mike Nate

In Memory of Nancy J. Skoving
AT&T Telecom Pioneers South Bend

In Memory of Vera R. Slack
Bruce R. Slack

In Memory of Peter (Pete) C. Slater
Jane and David Lewinski

In Memory of Karen A. Sloma
Lori and Mike Kerr

In Memory of Carl J. Smanda
Diane R. Smanda

In Memory of Mary Ann Smerekanch
Mr. and Mrs. Filiberto Anastasio
Mr. and Mrs. James Andrasco
Jennifer Francis
Sara Grande
Dorothy Mackulin
Mr. and Mrs. David J. Manning
Mr. and Mr. John Michel
Mr. John C. Orr
Kathy Shaul
Dr. Eilyn T. Stecker and Mr. Peter D. Smith
Jack, Noah, Amy and Martin Stone
Susan and Richard Sullivan
Carol Trent
Kerry and Mike Wallace

In Memory of Charles Edward Smith
Carmen Cantu
Mrs. Ofelia Smith

In Memory of Margaret E. Smith
Mr. Charles T. Smith

In Memory of Sarah R. Smith
Mrs. Janis Emmendorfer

In Memory of Carol (Joan) Snider
Karen Geisler

In Memory of Earl Lynn Snyder
Fort Wayne Pit Bull Coalition, Inc.
Mr. and Mrs. Steve Hunsberger and Family
Dianna Jackson
Kruggel, Lawton & Company

In Memory of Earl Lynn Snyder
Fort Wayne Pit Bull Coalition, Inc.
Mr. and Mrs. Steve Hunsberger and Family
Dianna Jackson
Kruggel, Lawton & Company

In Memory of Earl Lynn Snyder
Fort Wayne Pit Bull Coalition, Inc.
Mr. and Mrs. Steve Hunsberger and Family
Dianna Jackson
Kruggel, Lawton & Company

In Memory of Earl Lynn Snyder
Fort Wayne Pit Bull Coalition, Inc.
Mr. and Mrs. Steve Hunsberger and Family
Dianna Jackson
Kruggel, Lawton & Company

In Memory of Earl Lynn Snyder
Fort Wayne Pit Bull Coalition, Inc.
Mr. and Mrs. Steve Hunsberger and Family
Dianna Jackson
Kruggel, Lawton & Company

In Memory of Earl Lynn Snyder
Fort Wayne Pit Bull Coalition, Inc.
Mr. and Mrs. Steve Hunsberger and Family
Dianna Jackson

In Memory (continued)

In Memory of Kathleen G. Troester
Mr. and Mrs. W. Timothy McNeill

In Memory of Ruth F. Tulchinsky
Karen M. Leshner, CPA
Mrs. Cheryl Luther

In Memory of Reuben W. TUNE
Joyce and Charles DeLaruelle

In Memory of Ronald (Ron) L. VanDeVeire
Janet VanDeVeire

In Memory of Rose M. VanHulle
Stephanie Pasma

In Memory of Donna M. VanOoteghem
John McMahon and Roy Weston
The Nilles Family
Heather and Mark Simpson
Carolyn and Steve VanOoteghem

In Memory of George Verhaeghe
Ms. Kathleen A. Harrell

In Memory of Maurice (Maury) T. Verstraete
Eldon Kemper
The LaCluyze Family

In Memory of Shirley M. Wachs
Mr. and Mrs. Ray Aldrich
Anonymous
Mary Jo and Richard Appelt
Mr. and Mrs. LeRoy Atherton
Peggy and Ralph Bakle
Ann and Tom Balcerzak
Mr. and Mrs. Arthur L. Campbell
Mrs. Beverly Dorton
Mrs. Lorraine A. Galasso
Mary and Gary Groshans
Ms. Helen J. Kennedy
Mr. and Mrs. Raymond T. Kizer
Michiana Mustangs
Karen and Larry Mowery
David M. Rothenhoefer
Pat and Ted Sauerbeck
Mrs. Rita Simmons
Mr. and Mrs. Robert Soderberg
Mrs. Karen Swank
Mr. and Mrs. Marshall P. Werling

In Memory of Richard (Rich) L. Wadzinski
Louise and Steve Anella
Laura Avery
Mr. and Mrs. Jeffrey C. Brennan
Bronco Babes
Terry and Jim Cinal

Anna Mae Coryell
Jane and Greg Danner
Angie and Roger Duke
Mr. and Mrs. Justin Fain
Jerry Golden
Mr. and Mrs. David Hack
Mr. and Mrs. William P. Hohnacki
Diane J. Hohnacki
Ms. Linda Hohnacki
Marka Jackson
Mr. and Mrs. David Knapik
Rosemary and Bill McMahon
Jim Nowicki
Kathy and Mel Padgett
Ms. Suellen Peterson
Carol Powers
Mrs. Joan M. Riffel
Mark Ryan and William Fruci
Monica and David Sage
Ms. Deanna K. Shank
Dennis Shroyer
Suzanne and Larry Shroyer
Mary and Trevor Wendzonka
Ms. Margit J. Wiseman
Kathleen and Max Wright

In Memory of Gertrude (Gert) Wallace
Mrs. Helen Rockhill

In Memory of Suzanne (Sue) Louise Wallin
Anonymous
Peg Berreth
Emmons Elementary School
Jan and Boyd Frederick
Mr. and Mrs. Kenneth P. Lucas
Joyce O'Banion
John Thilman
Nyla and Mike Thilman
Mrs. Alexa Valdez
Denise Walters

In Memory of William (Bill) D. Walter
AT&T Telecom Pioneers South Bend
Annette and Ted Noell

In Memory of Peggy A. Walters
Ms. Susan R. Hammes
Ms. Joyce A. James
Irene Grall Staley
Cheryl and David Ziker

In Memory of Ronald (Ron) C. Weist
Ms. Lois E. Schmelzer

In Memory of Robert (Bob) LaMar Wenger
Karen Gaff
Cindy and Paul Lutes
Leona and J. Olen Yoder

In Memory of Romayne Wentzel
Becky Kizer

In Memory of Lorraine (Waynie) Wernitz
Mary Ann Kalka and Family

In Memory of Richard J. Wesolowski
Glenda and Donald Stanley

In Memory of John D. Whitmer, Jr
John Kurzhal
Christine and Dale Swanson

In Memory of Charlene J. Whiteberry
Tami Ennis

In Memory of Julianna (Julie) Wieger
Sue and Don Allen
Anonymous
Mr. and Mrs. Guy Chapman
Sharon Evans
Mr. and Mrs. David John Horvath
Julie Ochs
John Samarich
Mr. and Mrs. John Paul Scheu
Cindy Streich
Mr. and Mrs. Raymond F. Trippel
Mr. and Mrs. Charles M. Voreis
Margaret "Marge" Wieger and Family

In Memory of Viola (Penny) L. Wiesjahn
Marcia and Tony Dosmann
Kate, Pam and Henry Meyers
Linda and Rev. Jim Miller
Salem United Methodist Church
Mr. and Mrs. James Zakrzewski

In Memory of Rebecca Ann Wilcockson
Cathy Carpenter
Sandy and Ray Copas
Pam and Dave Delp
Sherri and Jim Griewank
Helen Hickman

Dr. Martha Langenbahn
Mr. and Mrs. Dennis D. Mackey
Linda Parker
Betsy and Larry Riddle
Carolyn Mills-Utter
Deb Wise

In Memory of Frances (Fran) Williams
Pam and Terry Bidwell
Mr. and Mrs. Joseph Bogucki

Mr. and Mrs. Ted Cichos
Vickie Crawley
Mr. and Mrs. Henry Keranen
Mr. and Mrs. Thomas D. Rightley
Ritschard Bros., Inc. and Employees
Mr. and Mrs. Bob Roundtree

In Memory of L. (Ed) Edward Williams
Janet VanDeVeire

In Memory of Rita M. Willingham
Mac Willingham

In Memory of Lucille Love Wilson
Sue and Jim McGee

In Memory of Casimir (Casey) E. Wisniewski
Diane and Denny Bailey
Alice Bystry
Ann Cornelis
Elaine and Dan Johnson
Henrietta Kosinski
Megan and Kristopher Norris
Vicki and William Norris
Patrick Novitzki
Jerri and Kenny Shirley
Mr. and Mrs. Ronald J. Strzelecki
Mr. and Mrs. Thomas J. Tapolcai
Norbert Wisniewski

In Memory of Clifton (Clif) J. Wringer
The Krick Family—Kris and Kevin Anderson,
Judy Canada, Diane and Jim DeArmond,
Elizabeth and Dan Drotar, Delbert Krick,
Fred Krick, Cynthia and Kevin Stock
Ginny and Gene Morris
Wanda and Randy Roberts
Sandy and Scott Schuster
Deanna Shank and Bob Cunningham

In Memory of The Michael and Mary K. Wroblewski Family of Michigan City
Marie Hubler

In Memory of Carl Loyd Wykoff
Liz and Randy Noland

In Memory of Jaime Leah Wynn
Mr. and Mrs. Irving M. Rosenberg

In Memory of Patricia M. Yoder
Anne and Fred Benner
Brad, Jim, Elese and Bryan Emond
Joyce Gibbons
Shirley Gidley
Linda Schuh

In Memory of Betty Jean Young
Ms. Georgia Johnson

In Memory of Carroll (Jerry) Emerson Zartman
Jane and Alan Bellile
Bonnie and John Broeker
Terri Dixon
Mrs. Kay Hagenbush
Deanna and Ted Jacobson
Shirley and Roland Lichtenbarger
The Shinkle Family
Robert H. Whitmer

In Memory of John R. Zellers
Atlanta Opera Orchestra Players Association

In Memory of Genevieve B. Ziolkowski
Barnes & Thornburg, LLP
Janilyn Daub
Richard Deahl
Mr. and Mrs. David A. Fodness

In Memory of Ted C. Zwierzynski
Donna and Jerry Ross
Maria and Bill Spencer

In Recognition of Those Who Served

The following gifts were made to the Hospice Foundation between 4/1/2016 and 7/31/2016 in memory or honor of a service member. We are very grateful for these gifts as they enable us to fulfill our mission to improve the quality of living.

Every effort has been made to ensure the accuracy of this listing. If you wish to report an error or omission, please call our Development Office at 800.413.9083. Any corrections will be in the next issue of CROSSROADS.

In Recognition of All Who Have Served in the Military

Mr. Elmer R. Gaedtke
Mr. and Mrs. James A. Hanley
Maple Grove United Methodist Church
Cecilia A. McCrillis
Judy Nickerson
Ms. Katherine E. Schlegelmilch

In Recognition of Veteran Service of Richard (Dick) W. Benwell
Linda Benwell

In Recognition of Military Service of Bruce H. Berger, Jr
Kaye M. Brown
Lora L. Davis
Lisa L. Leach

In Recognition of Veteran Service of James (Jim) R. Blake
Bruce R. Slack

In Recognition of Veteran Service of Joseph (Joe) R. Blakley
Sylvia Blakley

In Recognition of Veteran Service of David Blanchet
Sidney A. Blanchet

In Recognition of Veteran Service of Donald L. Bostwick, Sr
Cheryl and David Ziker

In Recognition of Veteran Service of Guy Chapman
Mr. and Mrs. Guy Chapman

In Recognition of Veteran Service of Don H. Claeys
Mrs. Margaret M. Claeys

In Recognition of Veteran Service of Robert J. Cowan
Mr. William C. Shaffer

In Recognition of Veteran Service of John H. Dinehart
Mr. Stephen K. Dinehart
Mr. and Mrs. Jeffrey L. Dinehart

In Recognition of Veteran Service of Richard (Dick) Charles Fields
Helen Fields

In Recognition of Veteran Service of Paul J. Freed
Stephen W. Freed

In Recognition of Veteran Service of Joseph Edward French
Mr. and Mrs. John P. McCahill

In Recognition of Veteran Service of Robert L. Gable
E. Elva Gable

In Recognition of Veteran Service of Harold (Hal) Goodwin, Jr
Betty J. Goodwin

In Recognition of Veteran Service of Roy J. Gramenz, Jr
Mr. and Mrs. James R. Gentry

In Recognition of Veteran Service of Robert (Bob) William Green
Mrs. Geraldine D. Green

In Recognition of Veteran Service of June M. Gurbick
Mr. Timothy E. Gurbick
Mr. Thomas Gurbick

In Recognition of Veteran Service of Esther F. Harrell
Ms. Kathleen A. Harrell

In Recognition of Veteran Service of Richard Harringer
Mr. John P. Harringer

In Recognition of Veteran Service of William R. Harris
Martha Boyer

In Recognition of Veteran Service of George C. Hill
Martha Boyer

In Recognition of Veteran Service of Ronald H. Hurley
Mrs. Mary S. Hurley

In Recognition of Veteran Service of Robert M. Jacobsen
Mrs. Deborah Jacobsen

In Recognition of Veteran Service of Larry A. Kasa
Janet Arnold
Jackie and David Tilly

In Recognition of Veteran Service of John A. Kennedy
Dr. and Mrs. Walter H. Halloran

In Recognition of Veteran Service of John Michael Korb
Ann Korb

In Recognition of Veteran Service of David D. Kramer
Jody Scheetz

In Recognition of Veteran Service of Frank M. Kuhar
Mr. and Mrs. David A. Mauro

In Recognition of Military Service of William (Bill) Cyril Maccani
Rebecca Fear
Karen Hudson

Tammy Huyvaert
Terri Lawton
Sue Morgan
Denise Scroggs
Alice Wolff

In Recognition of Veteran Service of Marion E. Makowski, Jr
Rita Makowski

In Recognition of Veteran Service of Charles M. Miller
Blake Miller

In Recognition of Veteran Service of Patrick (Pat) William Murphy
Mrs. Mary S. Hurley

In Recognition of Military Service of Thomas E. Mroz
Marion K. Mroz

In Recognition of Veteran Service of Allen N. Neely, Sr
Mr. Donald Neely

In Recognition of Veteran Service of Allen N. Neely, Jr
Mr. Donald Neely

In Recognition of Veteran Service of MerleKeith Neely
Mrs. Jacqueline Neely

In Recognition of Veteran Service of Leonard (Len) C. Novitzki
Patrick Novitzki



In Recognition of Veteran Service of Carl (Pat) E. Patterson, Sr
Mr. and Mrs. Carl E. Patterson, Jr

In Recognition of Veteran Service of James (Jim) L. Peters
Marguerite Peters

In Recognition of Veteran Service of Eugene (Gene) T. Piechocki
Patricia Neuhaus

In Recognition of Veteran Service of George Pozwilka
Susan Penn and Family

In Recognition of Veteran Service of Joseph N. Price
Ms. Barbara R. Price

In Recognition of Veteran Service of Franklin (Frank) D. Retter
Mary Jane Worthington

In Recognition of Veteran Service of Robert J. Roux
Mr. and Mrs. Gerald M. Phelps

In Recognition of Veteran Service of Leonard (Lee) W. Sargent
Mrs. Gail D. Sargent

In Recognition of Veteran Service of Robert E. Stauffer
Kathy and Rick Meek

In Recognition of Veteran Service of Orra Eugene Taylor
Helen VanGundy

In Recognition of Veteran Service of Cyril (Cy) A. VanDenDriessche
Mrs. Mary E. VanDenDriessche

In Recognition of Veteran Service of Walter L. VanGundy
Helen VanGundy
Rex A. VanGundy

In Recognition of Veteran Service of Rex G. Williams
Joan Williams

In Recognition of Veteran Service of John W. Wilson
Mike Shaffer

Honor Listing

In Honor of Joseph D. Bottorff
Terri Dixon

In Honor of Torrey DeVitto
Mr. David Mimran

In Honor of Rick's Auto Body
Leigh Motors, LLC



Supporting Center for Hospice Care
South Bend • Plymouth • Elkhart
501 Comfort Place
Mishawaka, IN 46545
1-800-467-7423

2016 Annual Appeal

“Serving with Care and Compassion”

Your gift to Center for Hospice Care and Hospice Foundation’s 2016 Annual Appeal helps us keep our over 36-year promise that nobody eligible for hospice care will ever be turned away, *regardless of their ability to pay*.

Online donations can be made at donations.cfhcare.org/16AA

